

4' WHITE LINE
FROM STA. TO STA.
103+00.00 LT - 108+00.00 LT
103+00.00 RT - 108+00.00 RT

4' YELLOW LINE (DOUBLE)
FROM STA. TO STA.
103+00.00 - 108+00.00

REMOVAL AND DISPOSAL OF GUARDRAIL
FROM STA. TO STA.
103+73.00 - 104+67.00 LT
104+47.00 - 104+89.00 RT
105+51.00 - 105+63.00 LT
105+73.00 - 105+86.00 RT

TRANSPLANTING SHRUBS
STA. OFFSET
103+49.93 24.65 RT
103+89.10 34.93 RT

ANCHOR FOR STEEL BEAM RAIL VT 12
103+85.00 LT
104+20.00 RT
106+28.00 LT
106+37.00 RT

CONSTRUCT DRIVE (GRAVEL)
103+28.50 RT (WIDTH 12')

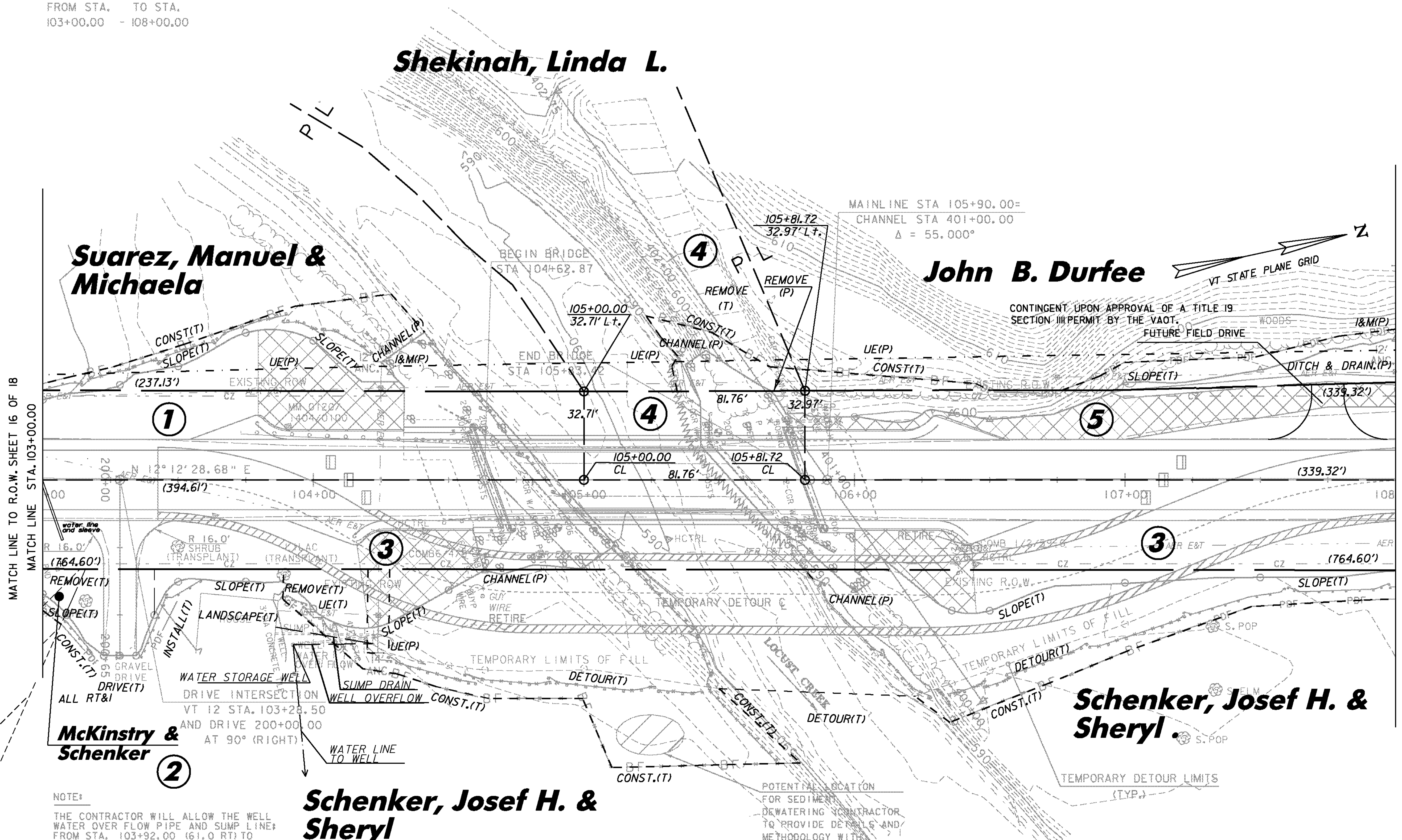
STEEL BEAM GUARDRAIL, GALVANIZED VT 12
FROM STA. TO STA.
103+80.00 - 104+28.79 LT
104+15.42 - 104+39.78 RT
106+07.58 - 106+28.22 LT
106+18.50 - 106+42.30 RT

Shekinah, Linda L.

Suarez, Manuel & Michaela

John B. Durfee

CONTINGENT UPON APPROVAL OF A TITLE 19 SECTION III PERMIT BY THE VAOT, FUTURE FIELD DRIVE



NOTE:

THE CONTRACTOR WILL ALLOW THE WELL WATER OVER FLOW PIPE AND SUMP LINE: FROM STA. 103+92.00 (61.0 RT) TO STA. 104+23.00 (58.0 RT) TO BE FREE FLOWING AT ALL PHASES OF THE PROJECT. THIS INCLUDES THE PIPES OVER FLOW DITCH TO BE FREE OF OBSTRUCTIONS AT ALL TIMES. THE FLOW OF DITCH IS AS INDICATED.

Schenker, Josef H. & Sheryl

Delineator with steel post
STA. 103+88.00 LT 18'(GREEN)
STA. 104+15.00 RT 18'(BLUE)
STA. 106+25.00 LT 18'(BLUE)
STA. 106+31.00 RT 18'(GREEN)

Guardrail approach section,
galvanized netc 2 rail
from sta. to sta.
104+28.79 - 104+58.29 LT
104+39.78 - 104+69.20 RT
105+78.17 - 106+07.58 LT
105+89.08 - 106+18.50 RT

Bridge railing, galvanized netc 2 rail
from sta. to sta.
104+58.29 - 105+78.17 LT
104+69.20 - 105+89.08 RT

LINES SHOWN ON THIS PLAN AS EXISTING PROPERTY LINES P/L ARE BELIEVED TO BE ACCURATE BUT SHOULD NOT BE RELIED UPON FOR PURPOSES UNRELATED TO THE STATE OF VERMONT'S ACQUISITION OF LAND AND RIGHTS FOR THIS PROJECT.

SCALE 1" = 20' - 0"
20 0 20

FOR R.O.W. USE ONLY

EXISTING BRIDGE DATA
SIMPLE SPAN WITH CONCRETE DECK
YEAR BUILT: 1939
CLEAR SPAN: 58 FT.
VERTICAL CLEARANCE: 9.5 FT.
WATERWAY OF FULL OPENING: 440 SQ. FT.
EXISTING BRIDGE RAIL: TEMPORARY CONCRETE BARRIER

PROJECT NAME: BETHEL
PROJECT NUMBER: BHF 0241(30)

FILE NAME: sc002bdr.dgn
PROJECT LEADER: M. EVANS-MONGEON
DESIGNED BY: U. STANLEY
R.O.W. LAYOUT SHEET 2

PLOT DATE: 31-AUG-2011
DRAWN BY: G. ROKES
CHECKED BY: U. STANLEY
SHEET 20 OF 64