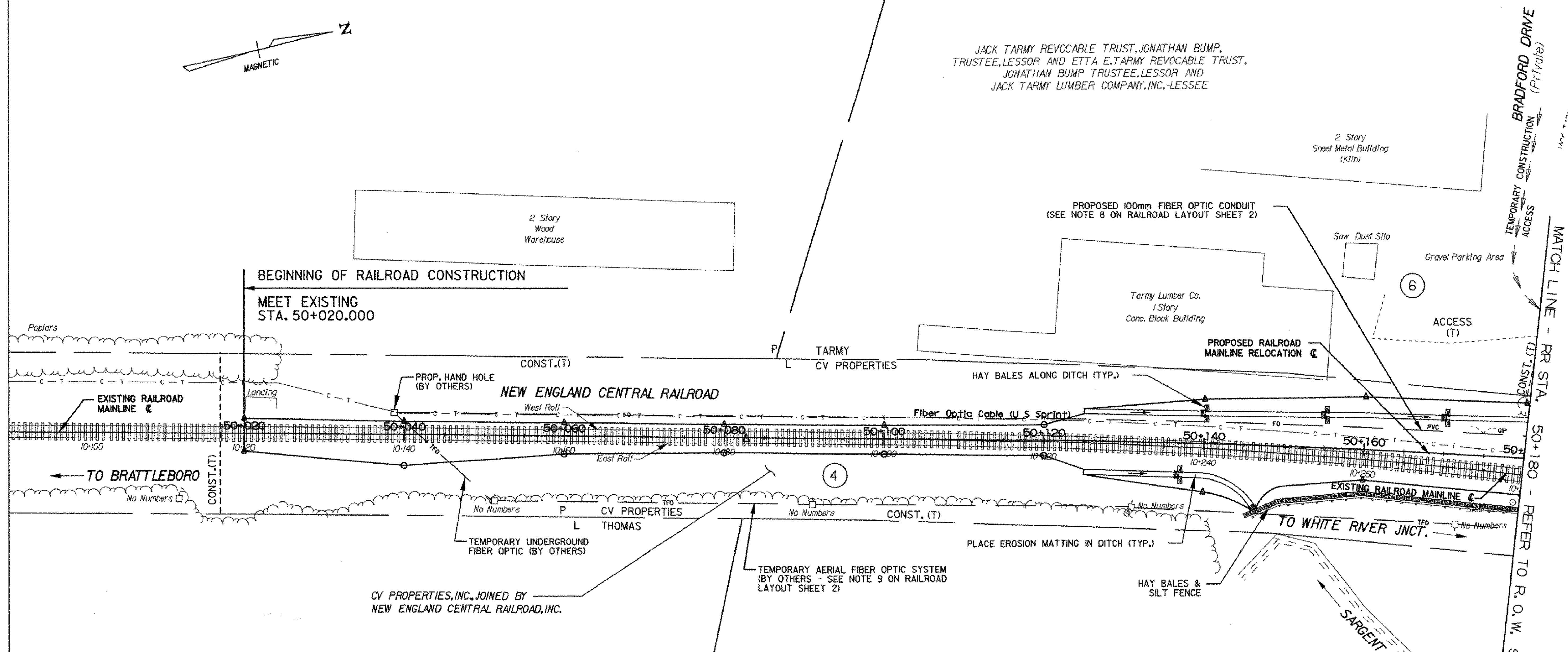


JACK TARMY REVOCABLE TRUST, JONATHAN BUMP, TRUSTEE, LESSOR AND ETTA E. TARMY REVOCABLE TRUST, JONATHAN BUMP TRUSTEE, LESSOR AND JACK TARMY LUMBER COMPANY, INC. - LESSEE



NOTES:

- RAILROAD PROPERTY LINE INFORMATION OBTAINED FROM PLAN ENTITLED "RIGHT-OF-WAY AND TRACK MAP, VERMONT VALLEY RAILROAD, STATION 3264+60 TO STATION 3317+40", DATED JUNE 30, 1914 (VALUATION PLAN 46, MAP 4)
- BOND WIRE BETWEEN RAILS AT APPROX. STA. 50+051 PROP. RAILROAD MAINLINE RELOCATION
- FIBER OPTIC DATA OBTAINED FROM SIGNS ON SITE AND U S SPRINT PLANS DATED 09-02-86, NUMBERED NTRK 127-880-064 AND 065, AND ENTITLED "FIBER OPTIC ROUTE RCD DWG, CABLE ROUTE DETAIL, SPRINGFIELD, MA - MONTREAL, CANADA."
- SURVEY INFORMATION OBTAINED BY NHDOT, ELECTRONICALLY TRANSLATED FROM MOSS TO MICROSTATION, AND SUPPLEMENTED BY VTRANS ADDITIONAL SURVEY.
- SEE VAOT STANDARD DRAWINGS T-1M AND T-2M FOR TEMPORARY EROSION CONTROL DETAILS.

LINES SHOWN ON THIS PLAN AS EXISTING PROPERTY LINES (P/L) ARE BELIEVED TO BE ACCURATE BUT SHOULD NOT BE RELIED UPON FOR PURPOSES UNRELATED TO THE STATE OF VERMONT'S ACQUISITION OF LAND AND RIGHTS FOR THIS PROJECT.

FEB 05 2003

DATUM
VERTICAL _____
HORIZONTAL _____

LAYOUT SHEET 3



FOR R.O.W.
USE ONLY

GENERAL PLAN

SURVEYED BY N/A DATE N/A
DRAWN BY LB/LRD DATE _____
SQUAD LEADER JHR
DESIGN FILE NO. 95b270\structures\sb270bd3.dgn
IPARM FILE sb270r103.l DATE PLOTTED 06-APR-2001

BRATTLEBORO
NH BR F 012-I(33)
R.O.W. SHEET 24 OF 27 SHEETS

233 ROW