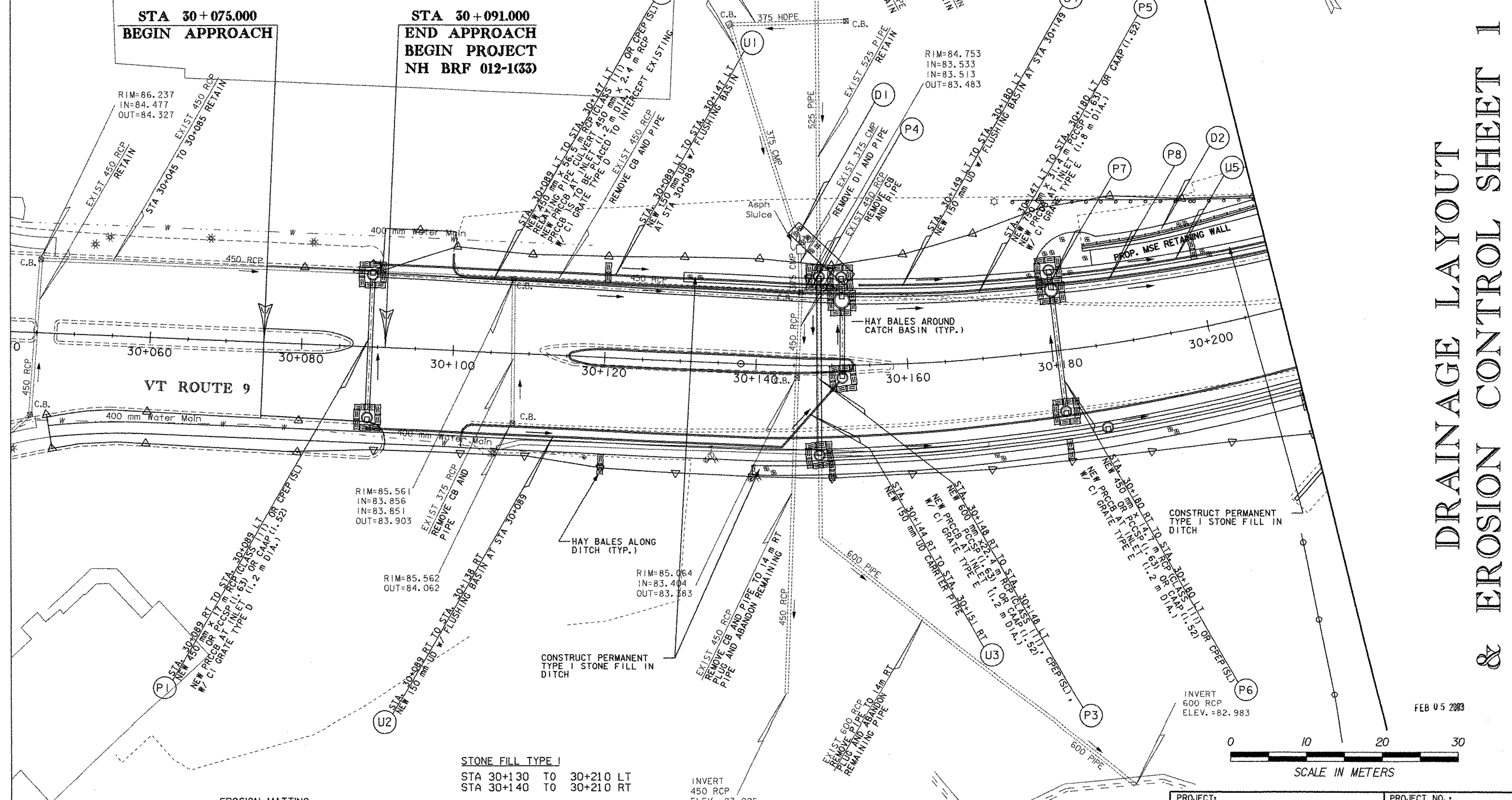


- (D1) STA. 30+147 LT
CONST SPECIAL DITCH
8 m x 2 m TYPE I STONE FILL
- (D2) STA. 30+180 TO STA. 30+220 LT
CONST SPECIAL DITCH
TYPE I STONE FILL
- (U5) STA. 30+182 LT TO STA. 30+250 LT
NEW 150 mm UD w/ FLUSHING BASIN
AT STA 30+182
- (P4) STA. 30+151 LT
NEW 600 mm x 1.5 m RCP (CLASS III) OR CPEP (SL)
RELAYING PIPE CULVERT 525 mm x 2.4 m RCP
NEW PRCCB AT INLET (1.2 m DIA.)
PRCCB IS TO BE PLACED TO INTERCEPT
CULVERT FROM STA 30+147 LT
W/ CI GRATE TYPE A
- (P7) STA. 30+180 LT
NEW 450 mm x 1.5 m RCP (CLASS III) OR CPEP (SL)
OR PCCSP (1.63) OR CAAP (1.52)
NEW PRCCB AT INLET (1.2 m DIA.)
W/ CI GRATE TYPE A
- (P8) STA. 30+180 LT TO STA. 30+250 LT
NEW 750 mm x 68.5 m PCCSP (1.63) OR CAAP (1.52)
NEW PRCCB AT INLET (1.5 m DIA.)
W/ CI GRATE TYPE E



DATUM

VERTICAL	NGVD 1929
HORIZONTAL	NAD 1983

EROSION MATTING
 STA 30+100 TO 30+130 LT
 STA 30+110 TO 30+140 RT

STONE FILL TYPE I
 STA 30+130 TO 30+210 LT
 STA 30+140 TO 30+210 RT

INVERT
 450 RCP
 ELEV. = 83.005

PROJECT:	BRATTLEBORO	PROJECT NO.:	NH BRF 012-1(33)
DESIGN FILE NAME:	95b270\structures\sb270bd2.dgn		
IPARM FILE NAME:	sb270coll1	PLOT DATE:	09-MAR-2001
SURVEYED BY:		SURVEY DATE:	
SQUAD LEADER:	W. HUSBAND	DRAWN BY:	P. SHEDD
R.O.W. SHEET 17 OF 27 SHEETS			



DRAINAGE LAYOUT & EROSION CONTROL SHEET 1

FEB 05 2003

7.76 raw