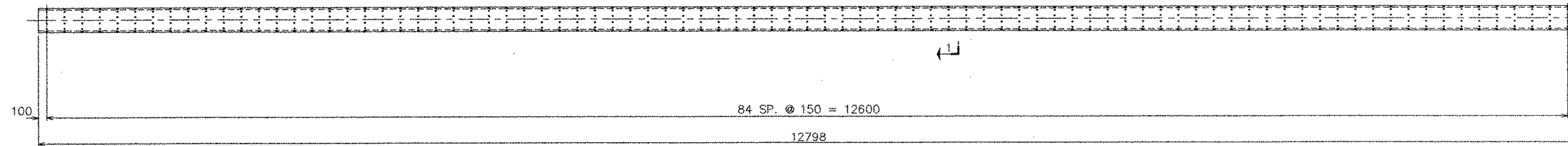
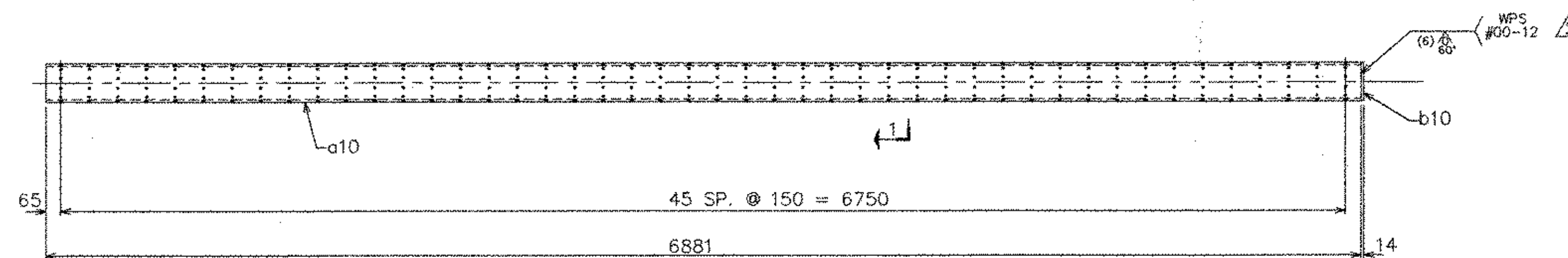


Dwg. No.	Rev.	Ship Mark	Piece Mark	Qty	Type	Size of Material	Grade	Length	Finish	Wgt./Lbs.	Notes	ABM
10				4	1/2 PIPE	200# SCH. 80	A53 GR. B	12798	GALV.	3645	PERF.	3-A
10				2	ASSY.					984		
		a10		2	1/2 PIPE	200# SCH. 80	A53 GR. B	6881	GALV.	979	PERF.	3-B
		b10		2	PL	14x100	M270M-345W	200	GALV.	5		3-C
10				ONE	U-BOLT							
		c10		1	ROD	φ	A36		GALV.			
				2			HEX NUT		GALV.			
				2			WASHER		GALV.			
		d10		1	PL		A36		GALV.			

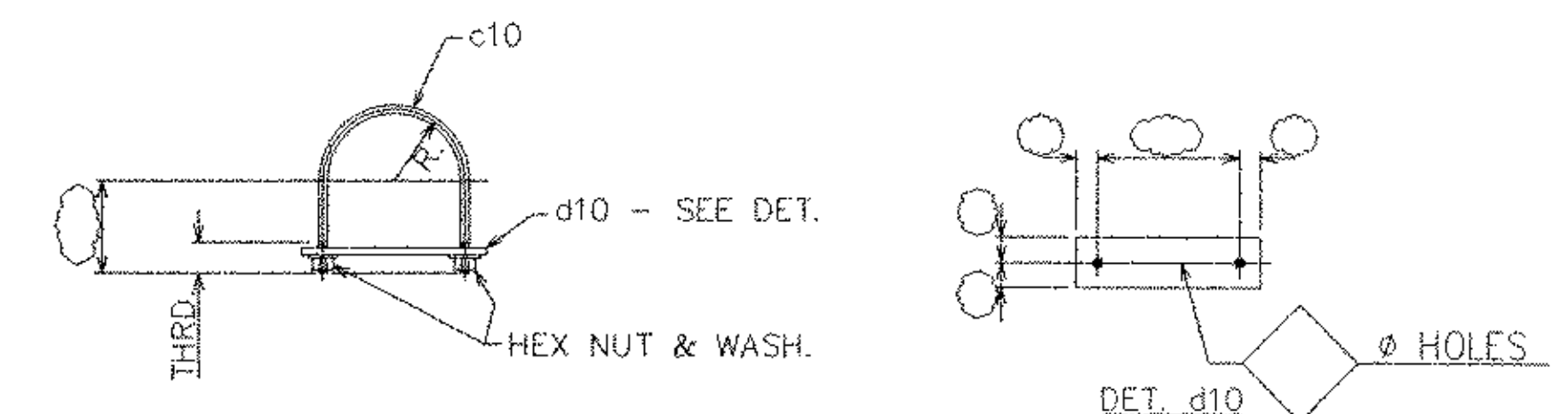
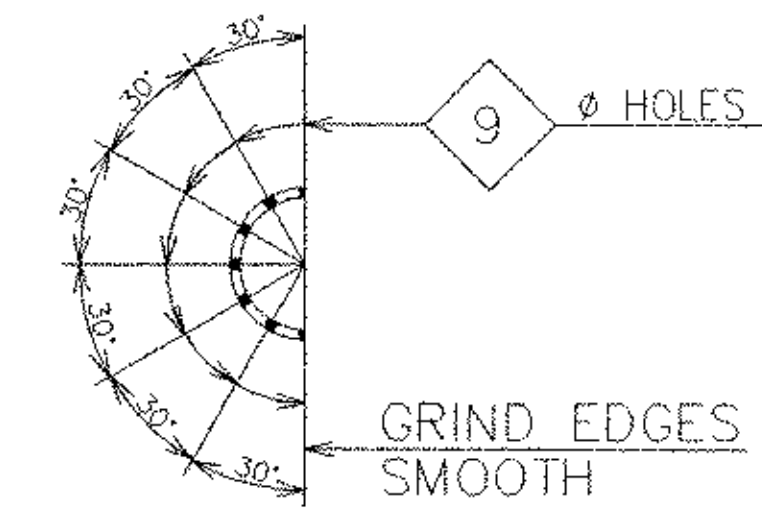
NOTES:
 1 - GENERAL NOTES: SEE DRAWING GNT
 2 - HOLES: 24φ (U.N.O.)



ITEM 10MS1 (4 REQ'D)
 SCALE 1:20



ITEM 10MS2 (2 REQ'D)
 SCALE 1:20



ITEM 10MS3 (1 REQ'D)
 NTS

STEEL-ART, INCORPORATED
 40 WEST MAIN STREET
 GALETON, PA 16922
 (814) 435-6997

REVISIONS			STATE OF VERMONT AGENCY OF TRANSPORTATION	
NO.	DATE	DESCRIPTION	CONTRACT :	PN :
1	5/14/03	PER APPROVAL	PROPOSED IMPROVEMENT TO RR BRIDGE #62.56	
2	6/24/03	PER APPROVAL	OVER VT ROUTE 9 (PRINCIPAL ARTERIAL)	
3	8/4/03	Approval	WINDHAM COUNTY, TOWN OF BRATTLEBORO	
			TITLE :	
			MISC. DETAILS	
DRAWN BY TJS		SHOP ORDER	DWC NO.	
3/26/03		4015	10	
CHKD BY RSY		BLOCK NO.	SHEET NO.	
4/9/03			16 / 20	

EASTERN BRIDGE LLC
 RURAL RTE. 2, BOX 302
 CLAREMONT, NH 03745
 603-642-5202

19955