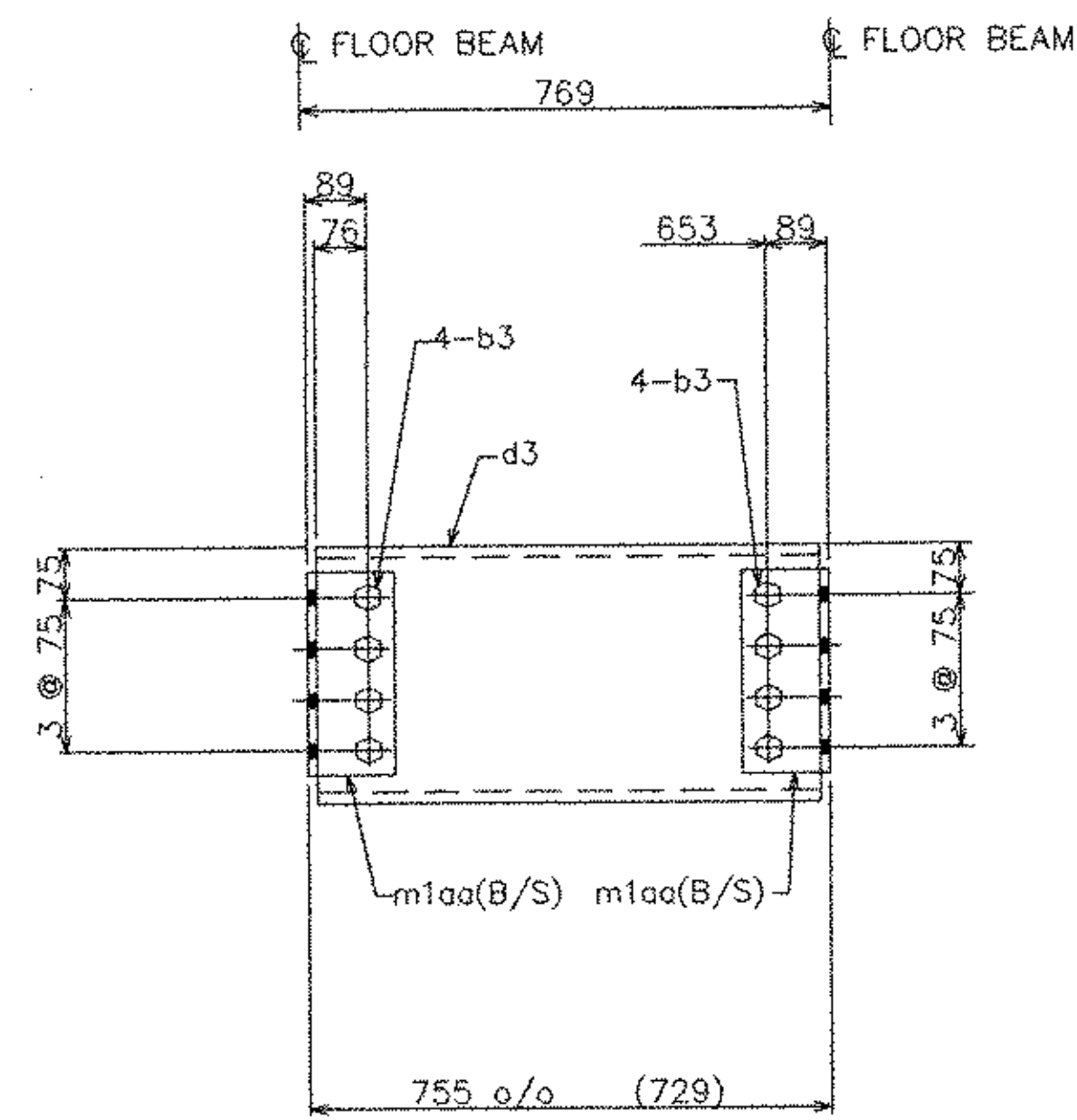
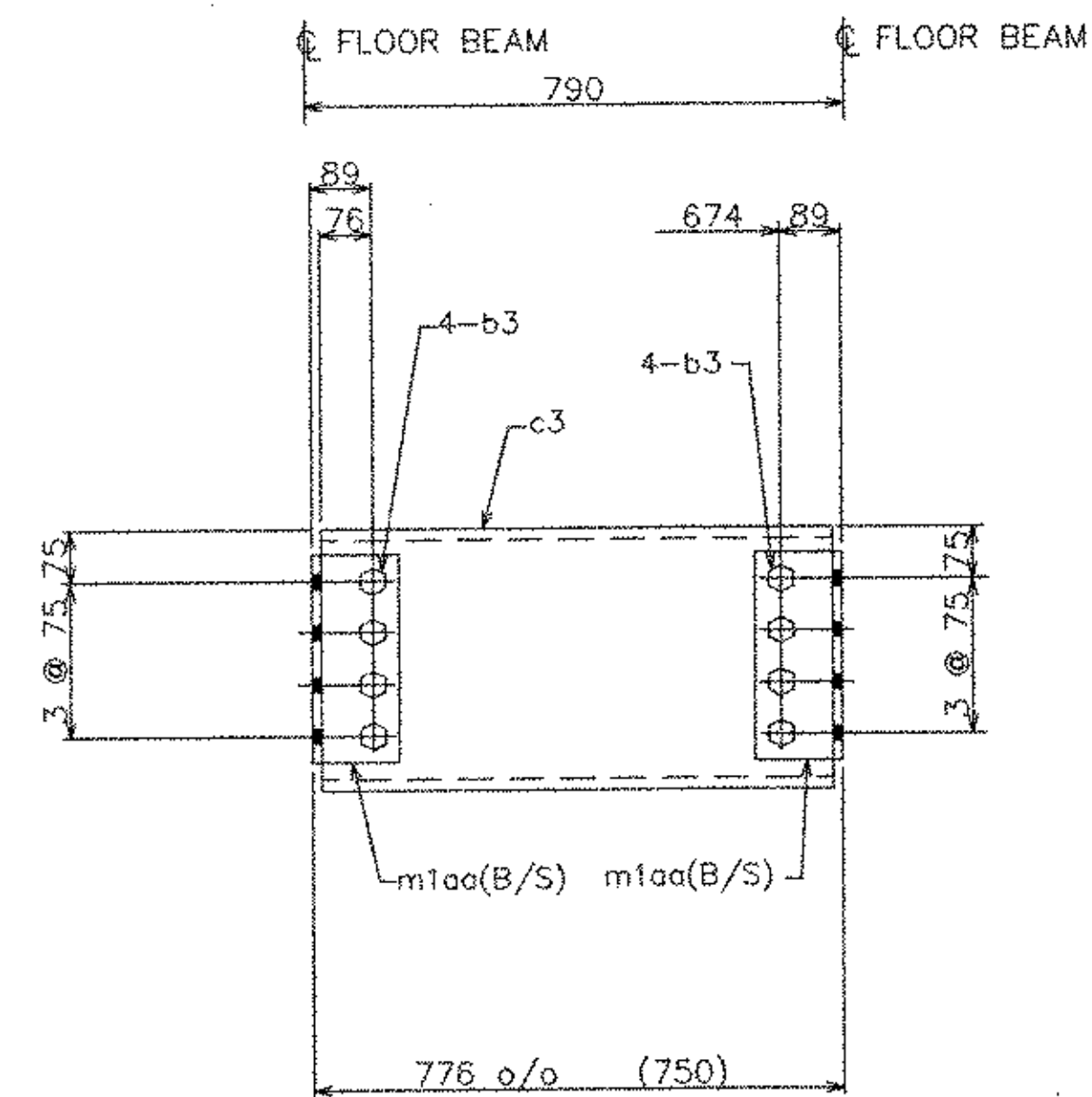


ITEM 3D1A (72 REQ'D)
SCALE 1:10



ITEM 3D1C (4 REQ'D)
SCALE 1:10



ITEM 3D1B (4 REQ'D)
SCALE 1:10

| Dwg No. | Rev. | Ship Mark | Piece Mark | Qty | Type | Size of Material | Grade | Length | Finish | Wgt./Lbs | Notes | ABM |
|---------|------|-----------|------------|-----|------------|------------------|-------------|--------|--------|----------|-------|-----|
| 3 | | 3D1A | | 72 | DIAPHRAM | | | | | 10790 | | |
| | | | a3 | 72 | C | 380x50.4 | M270M-345W | 725 | | 5793 | | 1-R |
| | | | m10a | 288 | L | 27x127x127 | M270M-345W | 301 | | 4617 | | 1-S |
| | | | b3 | 576 | H.S. BOLTS | 22.2 | A325 TYPE 3 | 70 | | 380 | | 1-T |
| | | | | 576 | HEX NUT | 22.2 | | | | | | 1-P |
| | | | | 576 | STD. WASH | 22.2 | | | | | | 1-Q |
| 3 | | 3D1B | | 4 | DIAPHRAM | | | | | 610 | | |
| | | | c3 | 4 | C | 380x50.4 | M270M-345W | 750 | | 333 | | 1-U |
| | | | m10a | 16 | L | 27x127x127 | M270M-345W | 301 | | 256 | | 1-S |
| | | | b3 | 32 | H.S. BOLTS | 22.2 | A325 TYPE 3 | 70 | | 21 | | 1-T |
| | | | | 32 | HEX NUT | 22.2 | | | | | | 1-P |
| | | | | 32 | STD. WASH | 22.2 | | | | | | 1-Q |
| 3 | | 3D1C | | 4 | DIAPHRAM | | | | | 604 | | |
| | | | d3 | 4 | C | 380x50.4 | M270M-345W | 729 | | 327 | | 1-V |
| | | | m10a | 16 | L | 27x127x127 | M270M-345W | 301 | | 256 | | 1-S |
| | | | b3 | 32 | H.S. BOLTS | 22.2 | A325 TYPE 3 | 70 | | 21 | | 1-T |
| | | | | 32 | HEX NUT | 22.2 | | | | | | 1-P |
| | | | | 32 | STD. WASH | 22.2 | | | | | | 1-Q |

NOTES:
1 - GENERAL NOTES: SEE DRAWING GN1
2 - HOLES: 24Ø (U.N.O.)
3 - SHOP BOLT - BOLT TO SHIP ONLY

| REVISIONS | | | STATE OF VERMONT AGENCY OF TRANSPORTATION | |
|--|---------|-------------|---|---------------------|
| NO. | DATE | DESCRIPTION | CONTRACT : | PIN : |
| | 8/14/03 | APPROVAL | PROPOSED IMPROVEMENT TO RR BRIDGE #62.56 OVER VT ROUTE 9 (PRINCIPAL ARTERIAL) WINDHAM COUNTY, TOWN OF BRATTLEBORO | |
| | | | TITLE : DIAPHRAGM D1 | |
| STEEL-ART, INCORPORATED 40 WEST MAIN STREET GALETON, PA 16922 (814) 435-6997 | | | DRAWN BY: TJS 3/17/03 | SHOP ORDER 4015 |
| EASTERN BRIDGE LLC RURAL RTE 2, BOX 302 CLARENCE, NH 03743 608-542-5202 | | | SWG. NO. 3 | SHEET NO. 9 / 20 |
| | | | OK'D BY: RGY 4/7/03 | |