

GENERAL SHOP NOTES

PROPOSED IMPROVEMENT TO RR BRIDGE #62.56
OVER VT ROUTE 9 (PRINCIPAL ARTERIAL)
IN THE TOWN OF BRATTLEBORO
WINDHAM COUNTY, VT

1 SPECIFICATIONS

ALL MATERIALS AND CONSTRUCTION SHALL CONFORM TO THE STATE OF VERMONT AGENCY OF TRANSPORTATION'S STANDARD SPECIFICATIONS FOR CONSTRUCTION, DATED 2001, AND ITS LATEST REVISIONS; AREMA'S "MANUAL FOR RAILWAY ENGINEERING", LATEST EDITION; THE AASHTO STANDARD SPECIFICATIONS FOR HIGHWAY BRIDGES, SIXTEENTH EDITION, AND ITS LATEST REVISION.

2 MATERIAL

ALL STRUCTURAL STEEL SHALL BE AASHTO M270M/M270M-93 GRADE 345W
ALL BOLTS SHALL BE 22MM DIAMETER AASHTO M164M-93 TYPE 3
NUTS SHALL BE AASHTO M291M-93, GRADE 1053 HVY. HEX NUTS
WASHERS SHALL BE AASHTO M293M (WEATHERING)

MEMBERS MARKED GR345WT2 SHALL CONFORM TO CHARPY V-NOTCH TESTING IN ACCORDANCE WITH AASHTO T243 FREQUENCY "H", ZONE 2
20 J. @ 4°C UP TO 2" (INCL.)
27 J. @ 4°C UP TO 2" TO 4"

MEMBERS MARKED GR345WF2 ARE FRACTURE CRITICAL AND SHALL CONFORM TO CHARPY V-NOTCH TESTING IN ACCORDANCE WITH AASHTO T243, FREQUENCY "PP", ZONE 2.
25 J. @ 4°C UP TO 2" (INCL.)
30 J. @ 4°C UP TO 2" TO 4"

3 FABRICATION AND WORKMANSHIP

ALL REENTRANT CUTS TO HAVE A MINIMUM 50MM RADIUS U.N.O.
FLOOR BEAMS SHALL BE FABRICATED WITH THEIR NATURAL CAMBER UP

ALL GIRDERS ARE FRACTURE CRITICAL MEMBERS AND REQUIRE THE FRACTURE CRITICAL CONTROL PLAN PER AREMA CHAPTER 15. TEST REPORTS AND SPECIMENS SHALL BE DELIVERED TO THE ENGINEER FOR EXAMINATION. ALL CERTIFICATION AND REQUIREMENTS OF AREMA SHALL BE FOLLOWED AND REPORTS AND DOCUMENTATION SHALL BE PROVIDED TO THE ENGINEER.

ALL STRUCTURAL STEEL SHALL BE DETAILED AND FABRICATED USING PROCEDURES AND TOLERANCES IN ACCORDANCE WITH APPLICABLE PUBLICATIONS OF THE AMERICAN RAILWAY ENGINEERING AND MAINTENANCE-OF-WAY ASSOCIATION (AREMA).

4 SHOP WELDING AND TESTING NOTES

ALL WELDING AND INSPECTION OF WELDS SHALL CONFORM TO ANSI/AASHTO/AWS D1.5

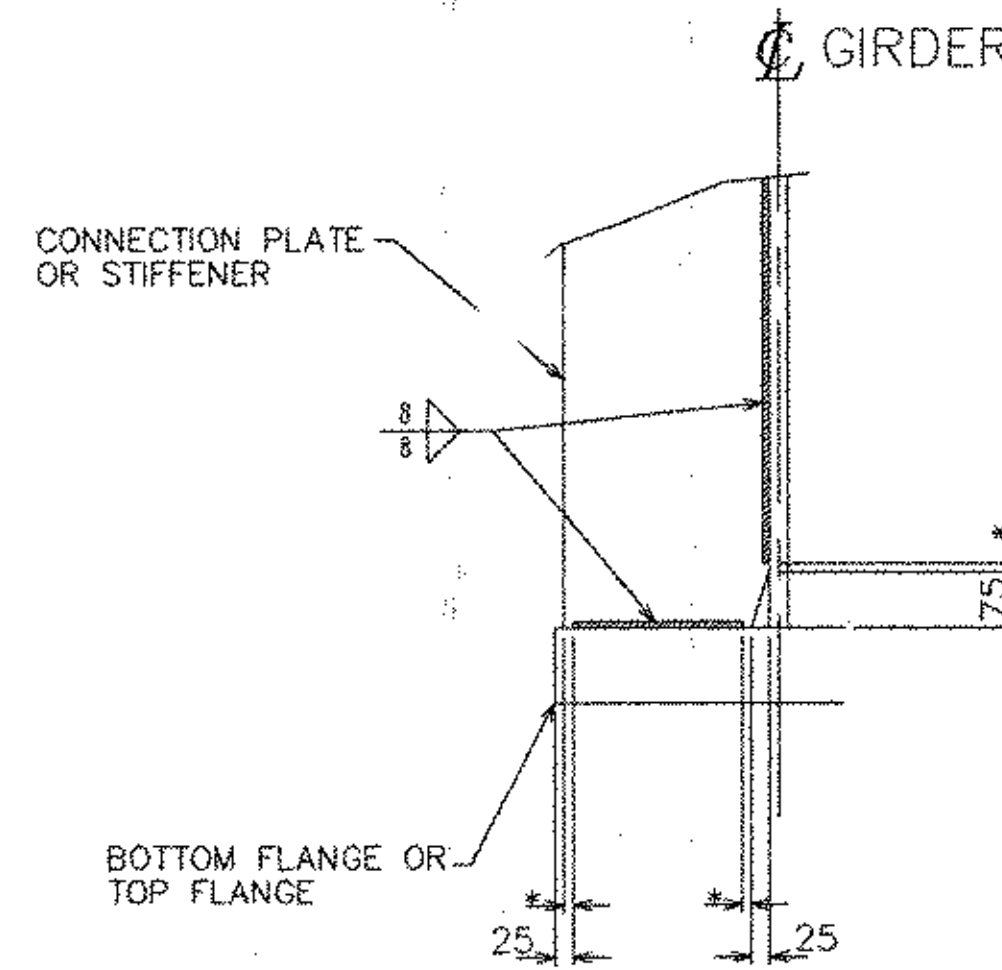
5 SHOP CLEANING AND PAINTING

THE STRUCTURAL STEEL OF THIS BRIDGE SHALL NOT BE PAINTED

IN THE FABRICATION SHOP THE OUTSIDE SURFACE OF THE FASCIA GIRDER SHALL BE CLEANED OF ALL DIRT, GREASE, PAINT, MILL SCALE OR OTHER FOREIGN MATERIAL PRIOR TO SHIPPING. THE PURPOSE OF THE CLEANING IS TO PRODUCE FASCIA SURFACES WHICH WILL WEATHER UNIFORMLY

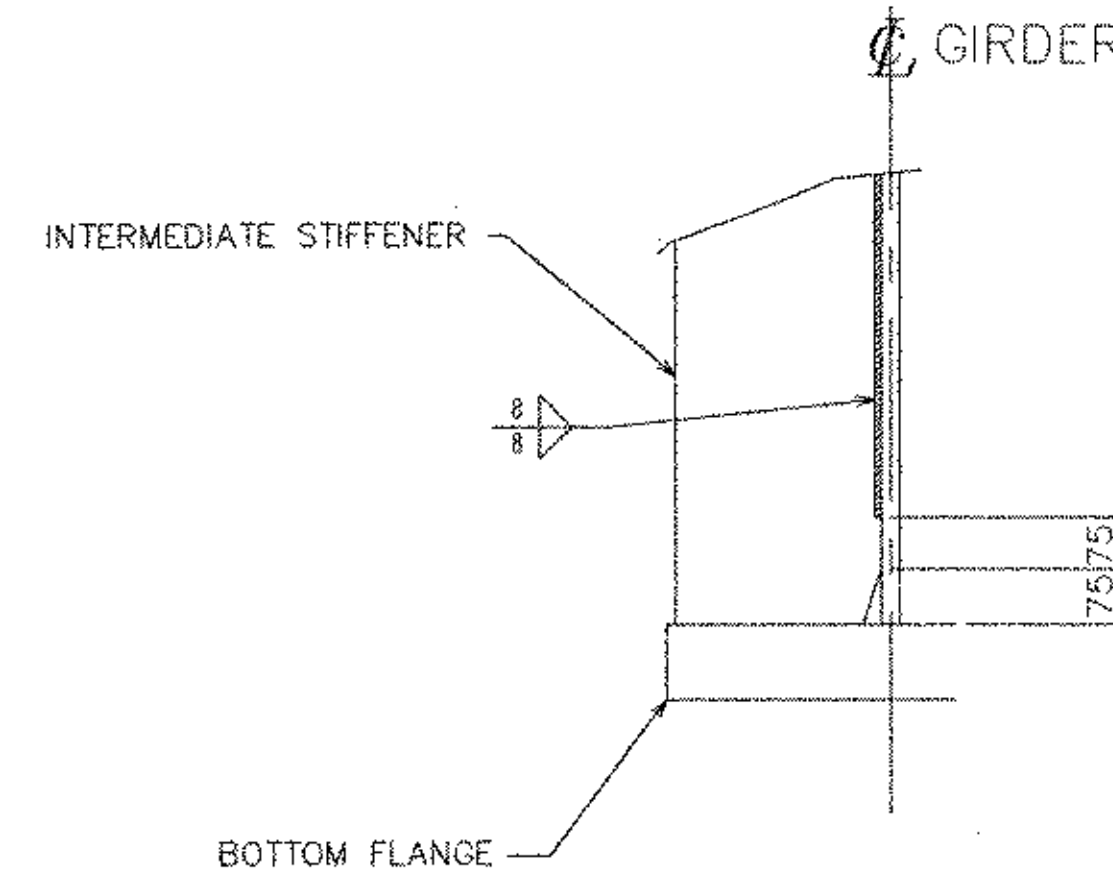
6 MISC.

A NAMEPLATE BEARING THE NAME OF THE MANUFACTURER AND THE DATE OF MANUFACTURE SHALL BE ATTACHED IN A VISIBLE LOCATION AT THE SOUTH END OF 2G2A.



TYPICAL WELD DETAIL (EXCEPT INTERMEDIATE STIFFENERS)** Δ

* = NO WELD FOR 6 MIN. 12 MAX.
(EXCEPT MUST MAINTAIN 25 MIN. FROM EDGE OF FLANGE)
** EXCEPT AT INTERMEDIATE STIFFENER AT BOTTOM FLANGE (TENSION FLANGE)



TYPICAL WELD DETAIL FOR INTERMEDIATE STIFFENERS Δ

AT BOTTOM FLANGE (TENSION FLANGE) ONLY

STEEL-ART, INCORPORATED
40 WEST MAIN STREET
GALETON, PA 16922
(814) 435-6997



EASTERN BRIDGE LLC
RURAL RTE 2, BOX 302
CLAREMONT, NH 03743
608-542-5202

REVISIONS			STATE OF VERMONT AGENCY OF TRANSPORTATION	
NO.	DATE	DESCRIPTION	CONTRACT	PIN
1	5/14/03	PER APPROVAL	PROPOSED IMPROVEMENT TO RR BRIDGE #62.56	
Δ	6/24/03	PER APPROVAL	OVER VT ROUTE 9 (PRINCIPAL ARTERIAL)	
	8/4/03	Approval	WINDHAM COUNTY, TOWN OF BRATTLEBORO	
			TITLE:	
			GENERAL NOTES	
DRAWN BY TJS		SHOP ORDER	DWG. NO.	
3/24/03		4015	GN1	
CKD BY RGY		BLOCK NO.	SHEET NO.	
4/14/03			1 / 20	