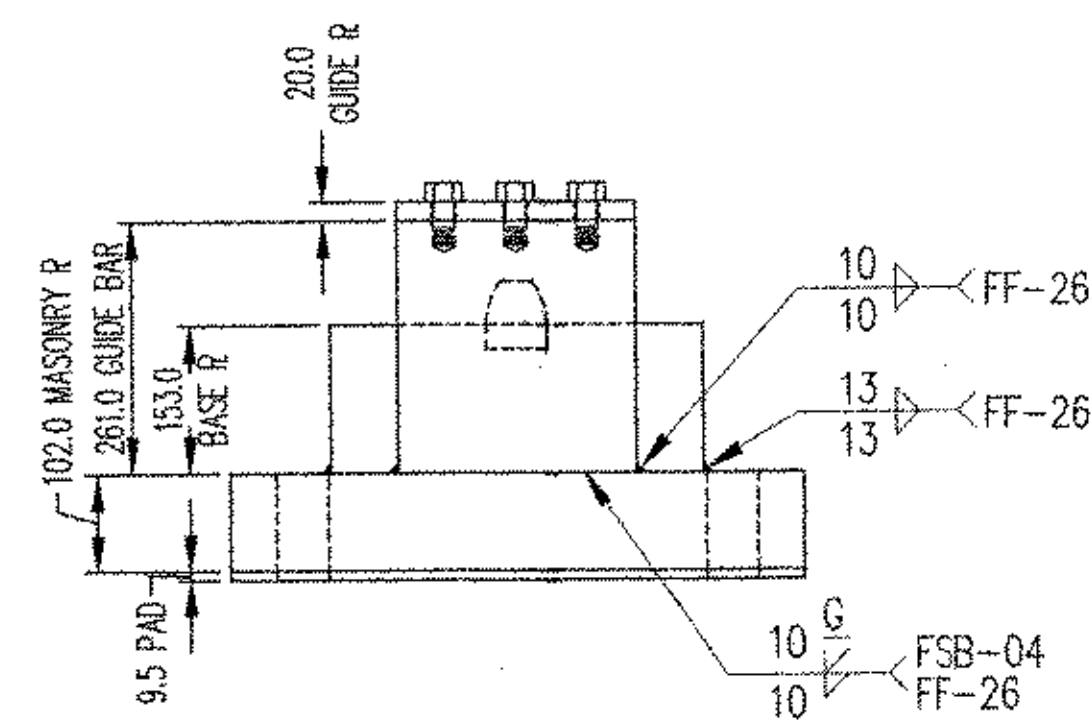


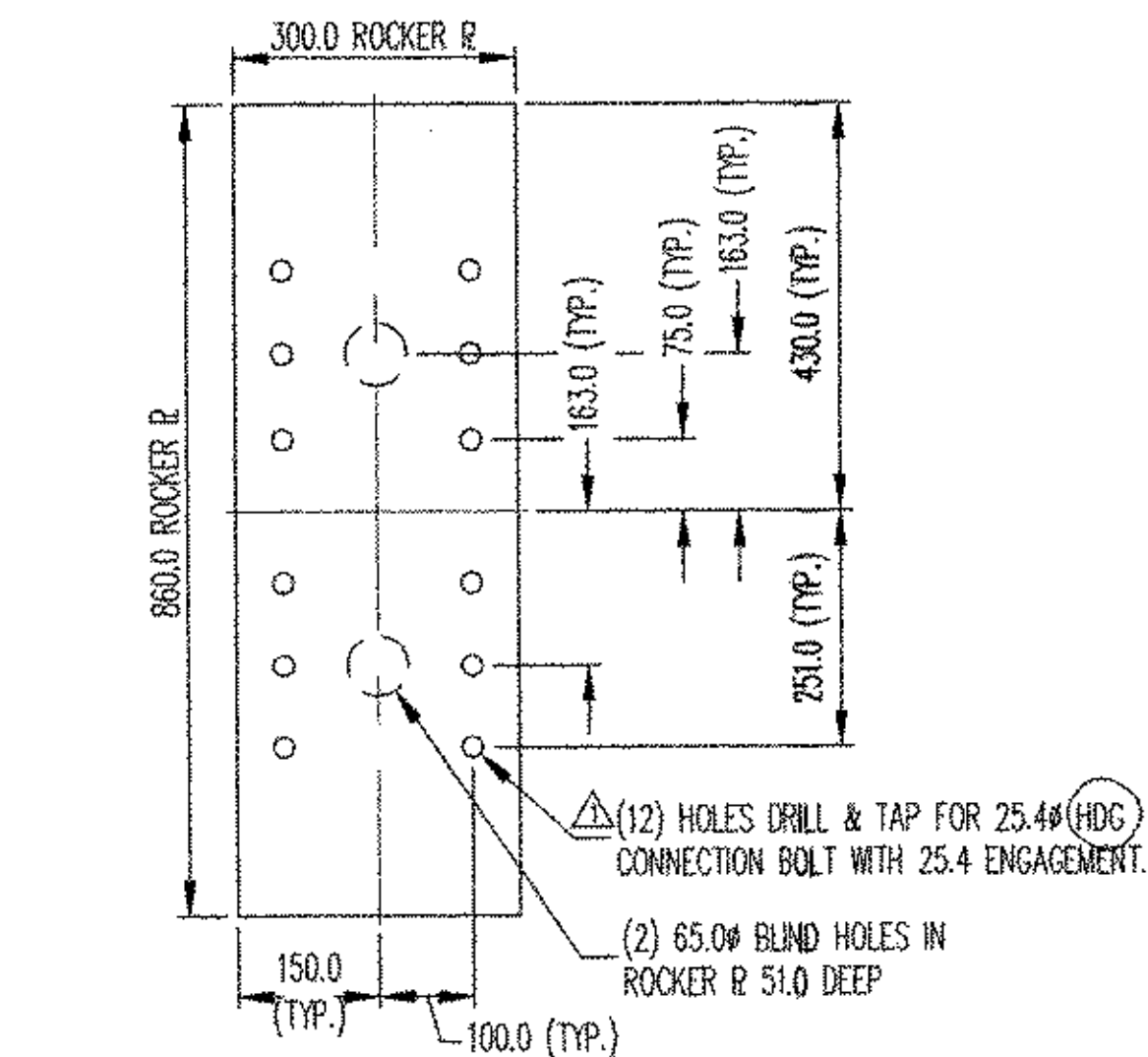
2-MASONRY PLATE ASSEMBLY

LOAD TABLE

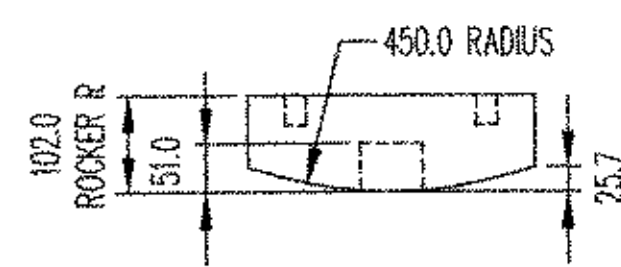
LOAD DATA	7657-1121-1
VERTICAL LOAD (kN)	2970
HORIZONTAL LOAD TRANSVERSE (kN)	182
HORIZONTAL LOAD LONGITUDINAL (kN)	676



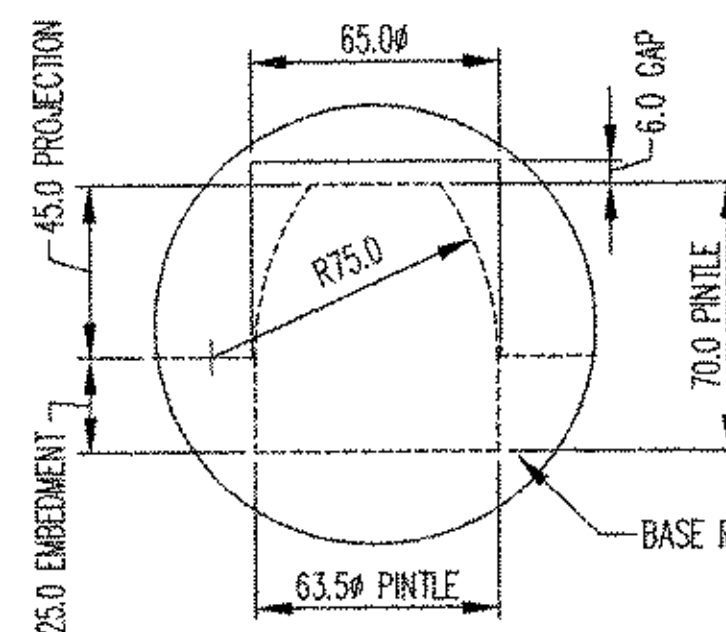
SIDE VIEW



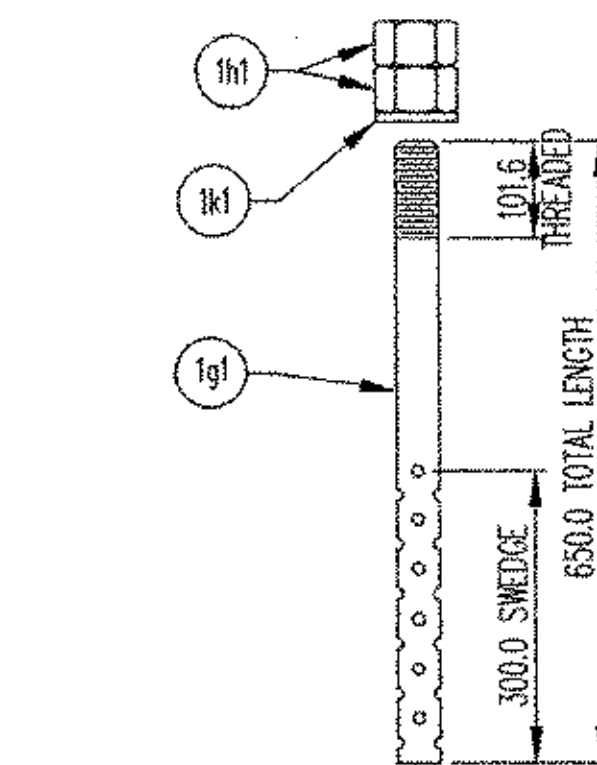
2-ROCKER PLATE



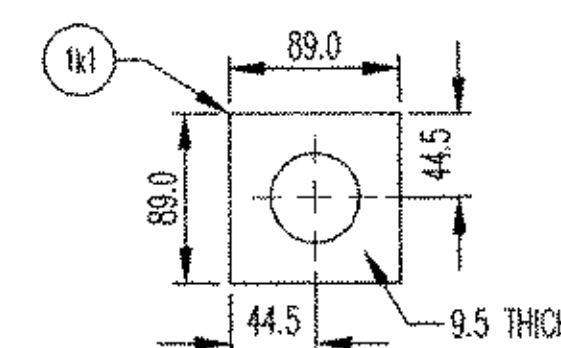
SIDE VIEW



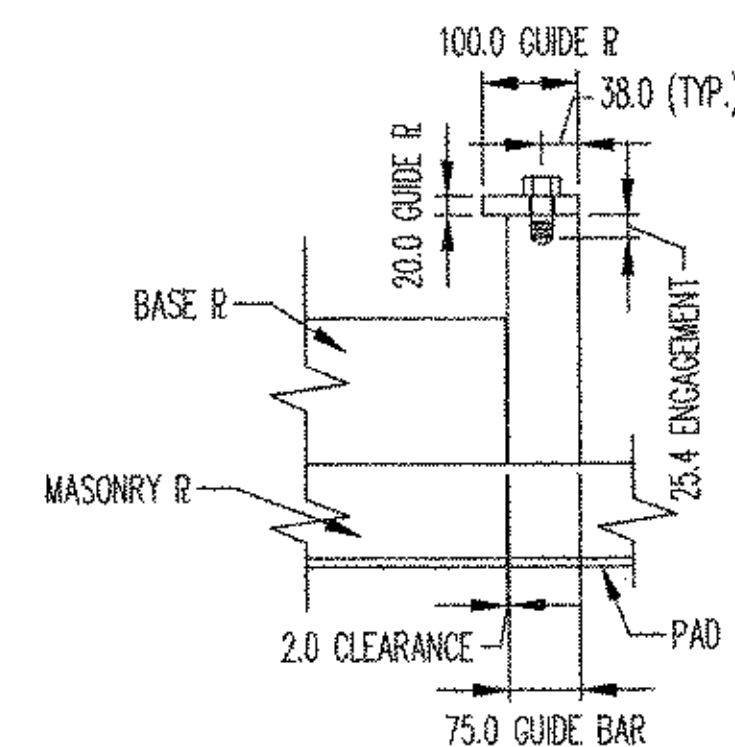
PINTLE DETAIL



SWEDGE ANCHOR ROD DETAIL



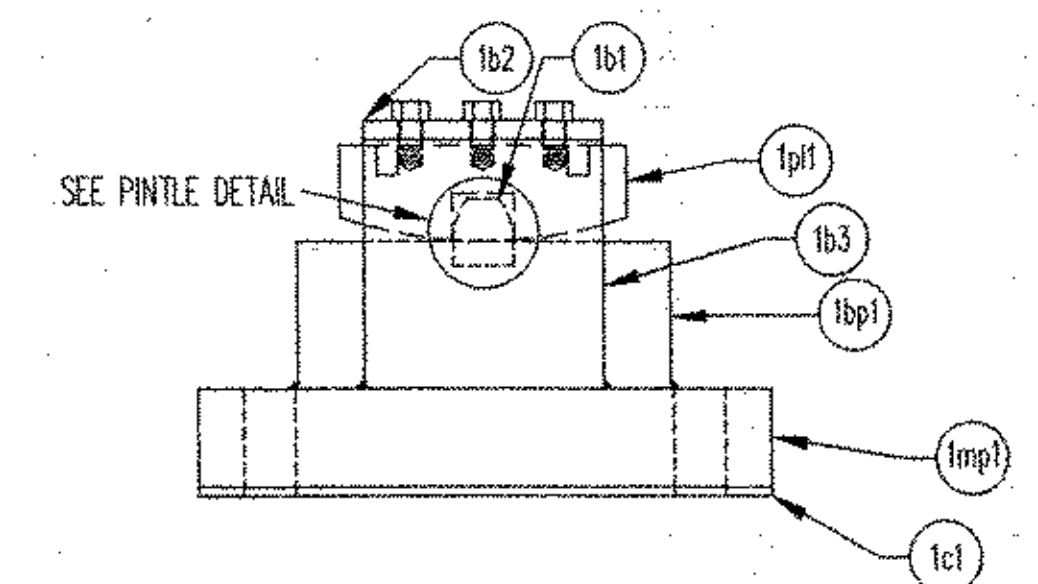
WASHER PLATE DETAIL



SECTION 'A-A'

MK	QTY	DESCRIPTION	MATERIAL	LENGTH	REMARKS	PART NO.
1A	2	ROCKER PLATE				
1p1	2	102.0 X 860.0	A709 GR 50W	300.0	450.0 RADIUS, GALV. A123	
1B	2	MASONRY PLATE ASSEMBLY				
1b1	4	63.5 ϕ	A709 GR 50W	70.0	PRESS FIT, GALV. A123	
1b2	4	20.0 X 100.0	A709 GR 50W	250.0	HOLES, GALV. A123	
1b3	4	261.0 X 75.0	A709 GR 50W	250.0	HOLES, GALV. A123	
1bp1	2	153.0 X 860.0	A709 GR 50W	390.0	HOLES, GALV. A123	
1mp1	2	102.0 X 1160.0	A709 GR 50W	600.0	HOLES, GALV. A123	
1C	2	BEARING PAD				
1c1	2	9.5 X 1160.0	NEOPRENE	600.0	HOLES, SHIPPED LOOSE, 5045 DURO	
1D	12	CONNECTION BOLT				
1d1	12	22.2 ϕ	A325	44.5	GALV. A153	
1F	24	CONNECTION BOLT				
1f1	24	25.4 ϕ	A325	127.0	GALV. A153	
1G	8	SWEDGE ANCHOR ROD				
1g1	8	44.5 ϕ	A449	650.0	N/D.G THREADED, 300.0 SWEDGE, GALV. A153	
1H	16	HEAVY HEX NUT				
1h1	16	44.5 ϕ	A563-DH	-	GALV. A153	
1K	8	WASHER PLATE				
1k1	8	9.5 X 89.0	A36	89.0	GALV. A123	

NOTE: ALL MATERIALS SPECIFICATION DESCRIPTIONS ARE ASTM, UNLESS OTHERWISE NOTED.



ASSEMBLY VIEW
STEEL FIXED BEARING
(2) REQ'D @ SOUTH ABUTMENT
(2) REQ'D TOTAL

PROJECT: NH 010-2(2)
DATE: 4/23/03
DESIGNER: CONSULTING ENGINEERS
CUSTOMER: JA McDONALD

FOR GENERAL NOTES SEE SHEET GN

REV.	DESCRIPTION	DATE	DET.	CHKD.
1	ADDED GALVANIZING TO HARDWARE AND PLATES	4/23/03	BC	EK

LOCATION	BRIDGE	PROJECT	DESIGNER	CUSTOMER
VT ROUTE 9	62.56	NH 010-2(2)	CONSULTING ENGINEERS	JA McDONALD

ITEM	QUANTITY
7652-1121-1	2 OF 2

SCALE	DRAWN BY	CHECKED BY	DATE
N.T.S.	B. COPPUSSE	KELLEY	3/20/03

DESCRIPTION	PROJECT NUMBER	PROJECT CODE	RELEASE	SHEET
STEEL ROCKER BEARING WINDHAM COUNTY, VERMONT	7657	1121	1	1

D.S. BROWN
300 E. CHERRY STREET
NORTH BALTIMORE, OHIO 45872
419.257.3561
FAX: 419.257.0332
4201 NOREX DRIVE
CHASKA, MINNESOTA 55318
952.368.3000
FAX: 952.448.7000
DSBROWN.COM