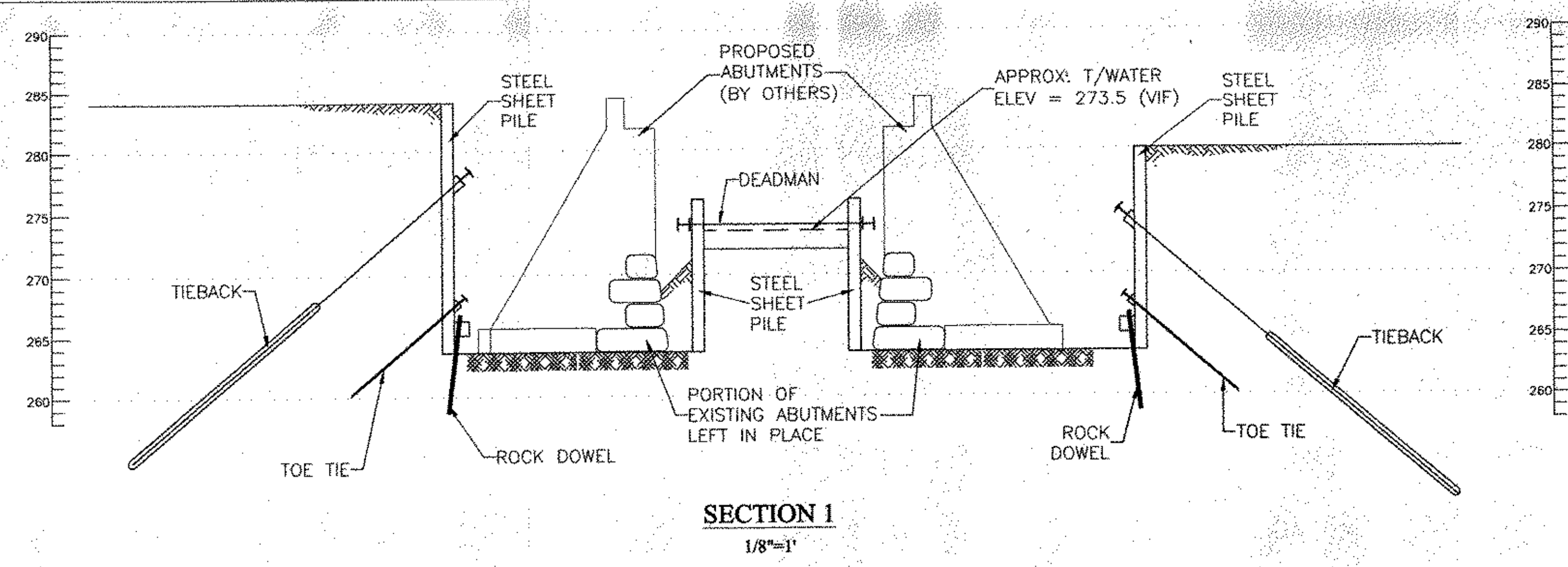
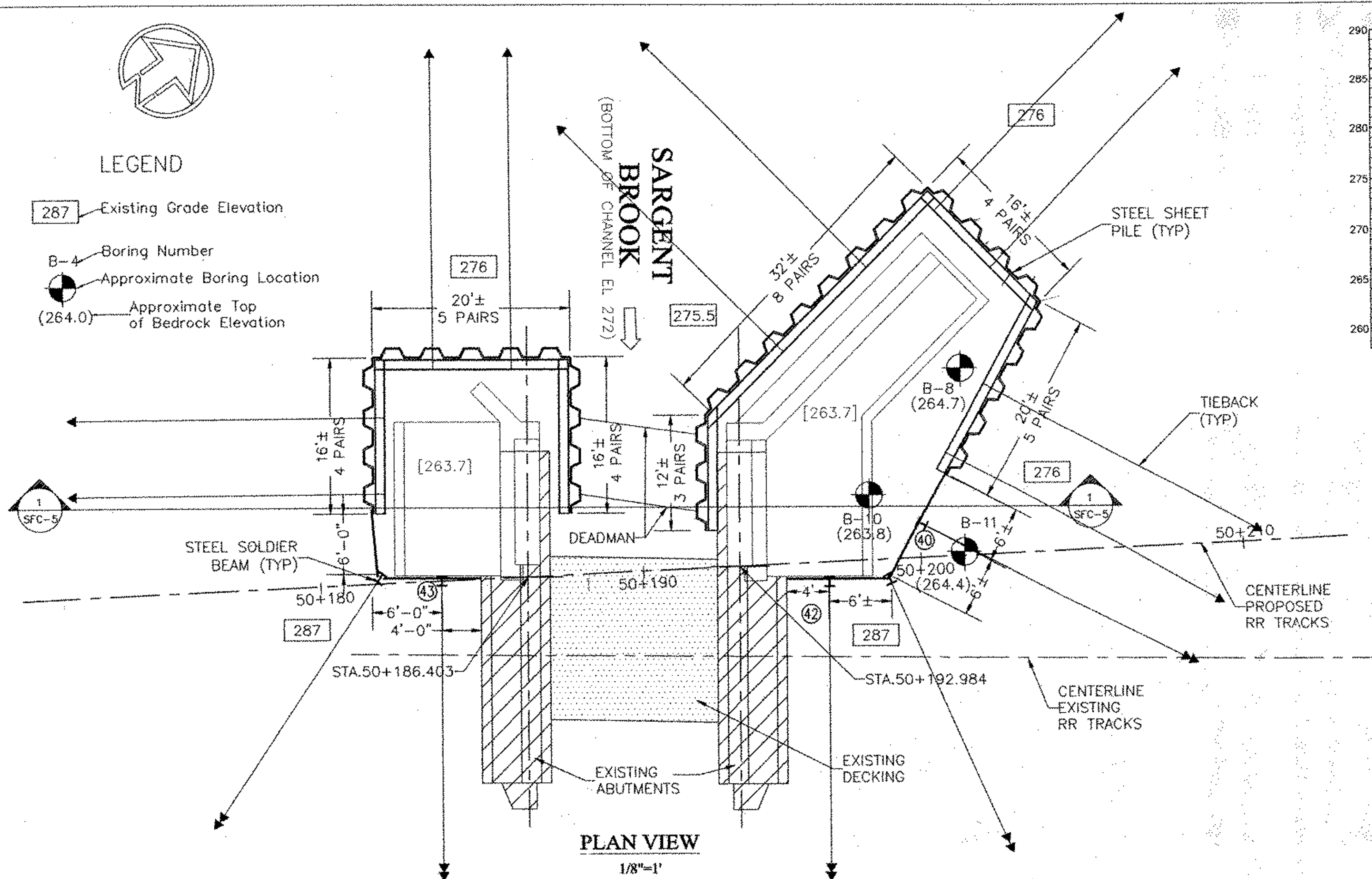


**LEGEND**

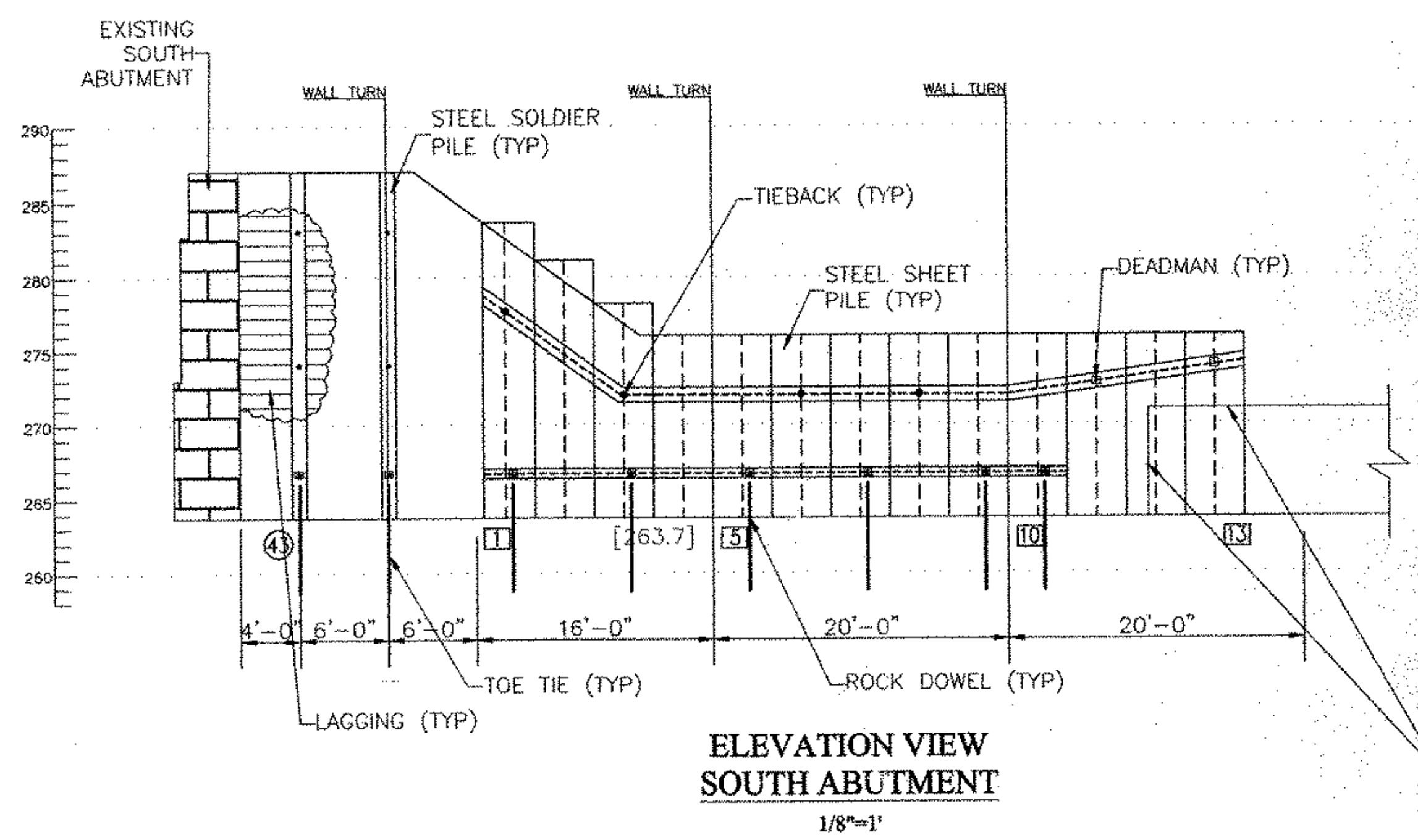
- 287 Existing Grade Elevation
- B-4 Boring Number
- Approximate Boring Location
- (264.0) Approximate Top of Bedrock Elevation



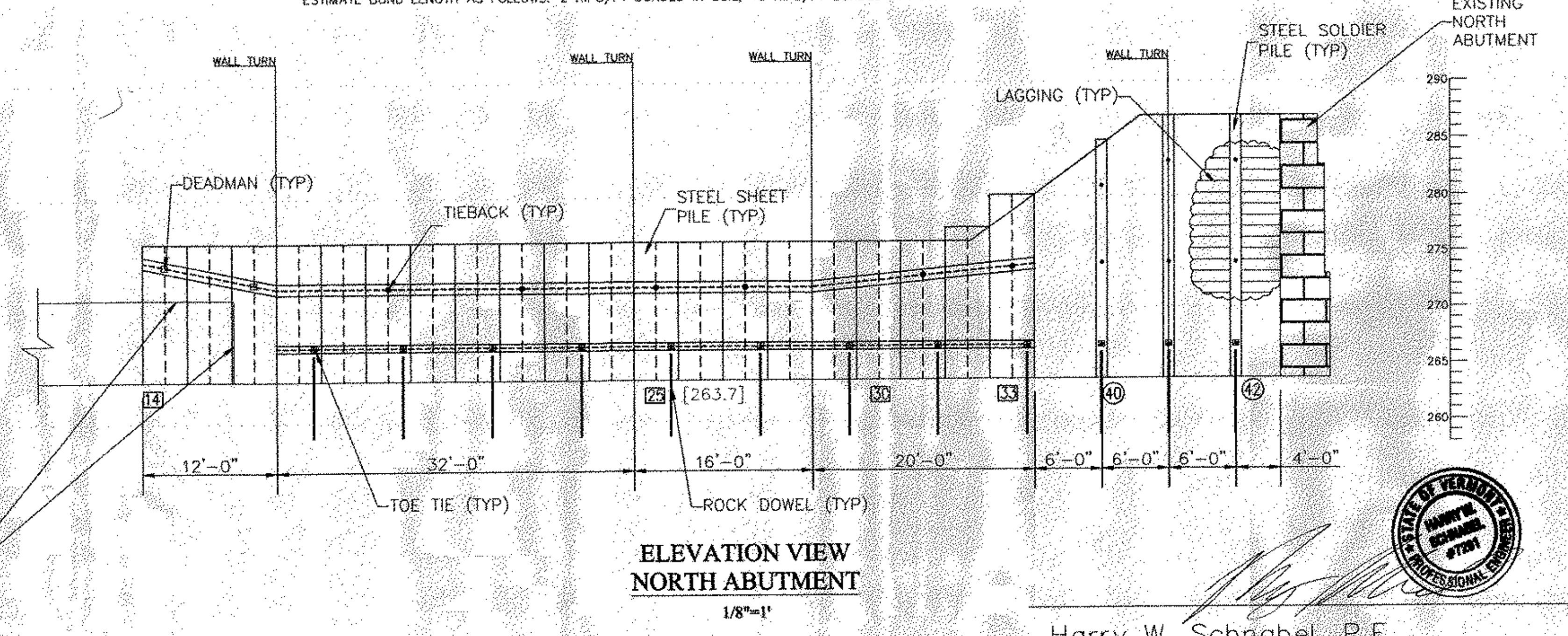
**SOLDIER BEAM/SHEET PILES/TIEBACK/TOE TIE SCHEDULE**

PILE NUMBER	NUMBER OF PILES	TOP ELEVATION (FT)	SUBGRADE ELEVATION (FT)	PILE <sup>1</sup> LENGTH (FT)	PILE <sup>2</sup> SIZE	H <sub>1</sub> (FT)	H <sub>2</sub> (FT)	TIEBACK ANGLE (DEG)	TIEBACK LOAD (KIPS)	UNBONDED LENGTH (FT)	BOND LENGTH <sup>3</sup> (FT)	BAR SIZE	NUMBER OF 0.6\"
40	1	284.8	263.7	21	2C15X33.9	4	7	40	50	15	10	1"	2
41-44	4	287	263.7	23	2C15X33.9	4	9	40	102	15	12	1 1/4"	3
SH 1-4	16 LF	282 - 276	263.7	12 - 19	PZ-22	4		40	73 (2 TIES)	15	10	1"	3
SH 5-9	20 LF	276	263.7	13	PZ-22	4		40	37 (2 TIES)	15	10	1"	2
SH 10-16	28 LF	276	263.7	13	PZ-22	4		DEADMAN	30 (2 TIES)			1"	
SH 17-28	48 LF	276	263.7	13	PZ-22	4		40	45 (4 TIES)	15	10	1"	2
SH 29-33	20 LF	282 - 276	263.7	12 - 19	PZ-22	4		40	91 (2 TIES)	15	10	1 1/4"	3

1. PILE LENGTH SHOWN IS FOR PLANNING PURPOSES ONLY. INSTALL PILES TO TOP OF BEDROCK OR 5FT BELOW BOTTOM OF EXCAVATION, WHICHEVER IS HIGHER.
2. SFC RESERVES THE RIGHT TO SUBSTITUTE ANY BEAM SIZE PROVIDED IT MEETS THE DESIGN REQUIREMENTS.
3. BOND LENGTH SHOWN IS FOR PLANNING PURPOSES ONLY. ACTUAL BOND LENGTH WILL BE DETERMINED IN FIELD BASED ON ACTUAL SOIL/ROCK CONDITIONS. ESTIMATE BOND LENGTH AS FOLLOWS: 2 KIPS/FT BONDED IN SOIL; 10 KIPS/FT BONDED IN ROCK. VERIFY WITH SFC ENGINEER PRIOR TO INSTALLING TENDON.



- (B1)
- 1 Very loose dark brown and yellow brown, c-f Sand, some f-gravel and silt, trace organics
  - 2
  - 3
  - 7 Loose, gray brown and yellow brown, c-f Sand to f-sand, trace to little gravel and silt.
  - 7
  - 7 Very loose to loose, gray brown to gray, c-f Sand to f-sand, trace to little gravel and silt. Encountered a 3-4" piece of wood at 13.5'
  - 4 Loose gray, c-f Sand, little gravel and silt. trace of wood
  - 6 Compact gray brown, c-f Sand, trace to little gravel, trace silt
  - 25 Bedrock - Phyllite
  - >50



Harry W. Schnabel, P.E.  
Vermont P.E. No. 7291

NOTE: FACE OF SOLDIER PILES SHALL NOT BE CLOSER THAN 5'3" FROM THE CENTERLINE OF THE TRACKS.

THESE DRAWINGS ARE THE PROPERTY OF SCHNABEL FOUNDATION COMPANY AND MAY NOT BE USED, COPIED, OR ALTERED, WITHOUT WRITTEN PERMISSION FROM SCHNABEL FOUNDATION COMPANY.  
COPYRIGHT 2003 SCHNABEL FOUNDATION COMPANY

REVISIONS

NO	DATE	DESCRIPTION
1	4/21/03	REVIEW COMMENTS/GEN. REVISIONS

**Schnabel**  
Foundation Company

Engineers and Contractors  
200 Turnpike Road  
Southborough, Massachusetts  
Atlanta • Denver • Chicago  
Houston • Los Angeles • Philadelphia  
San Francisco • Washington D.C.

Excavation Support at Sargent Brook	
Route 9 Improvements	
Brattleboro, Vermont	
Date: 02/27/03	Job Number: 06-3392
Scale: 1/8"=1'-0"	Drawing No: SFC-5