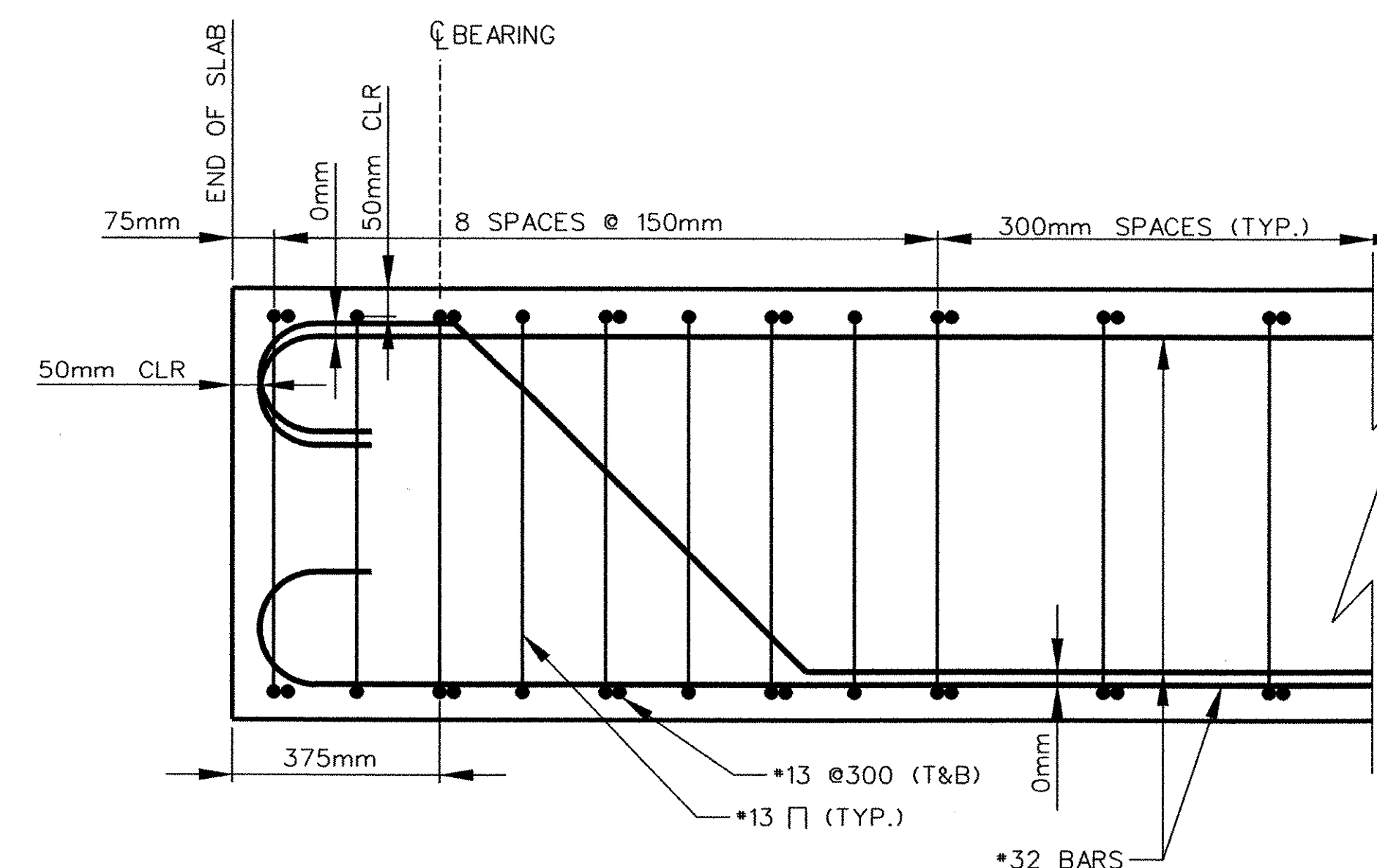
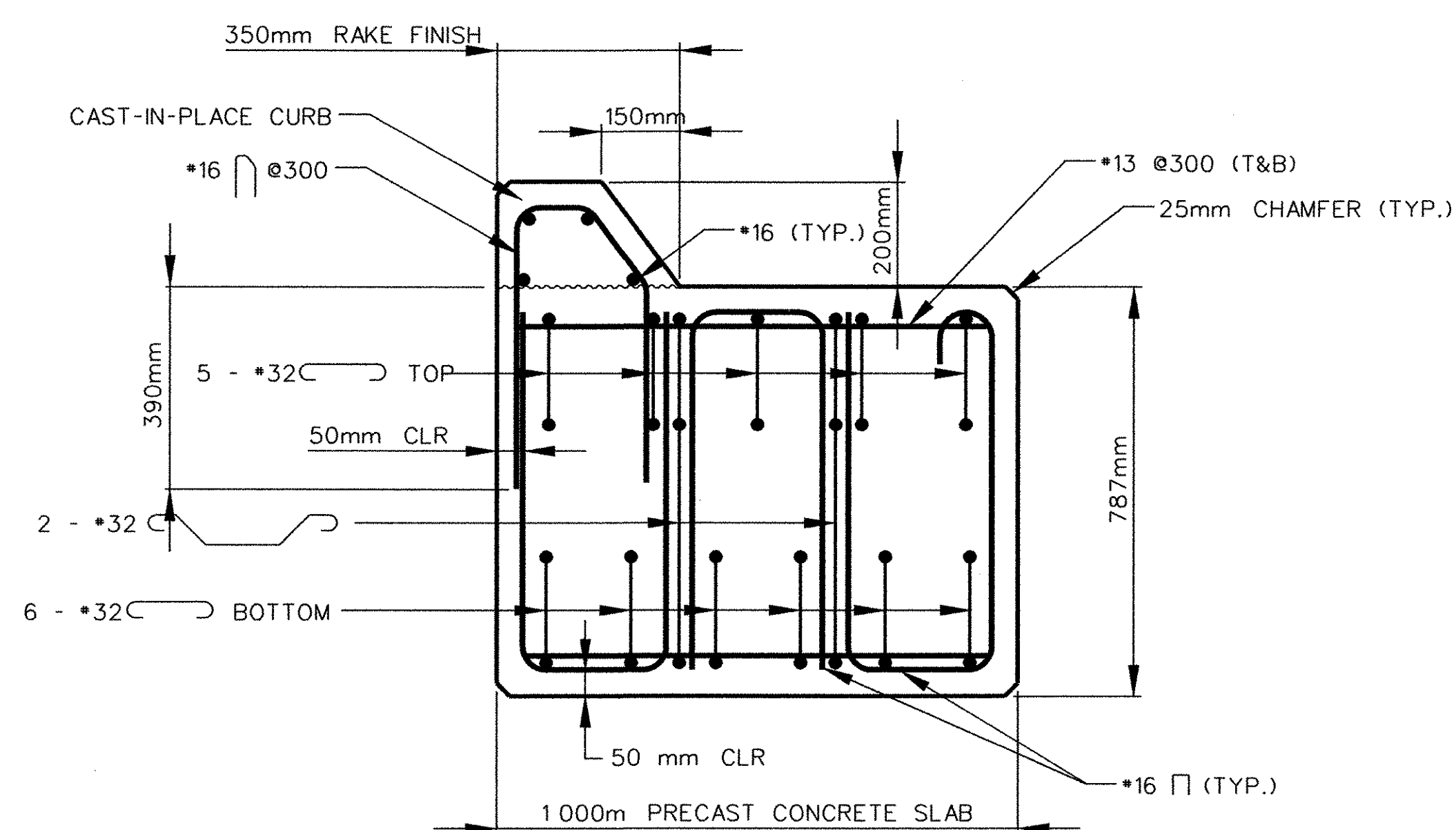


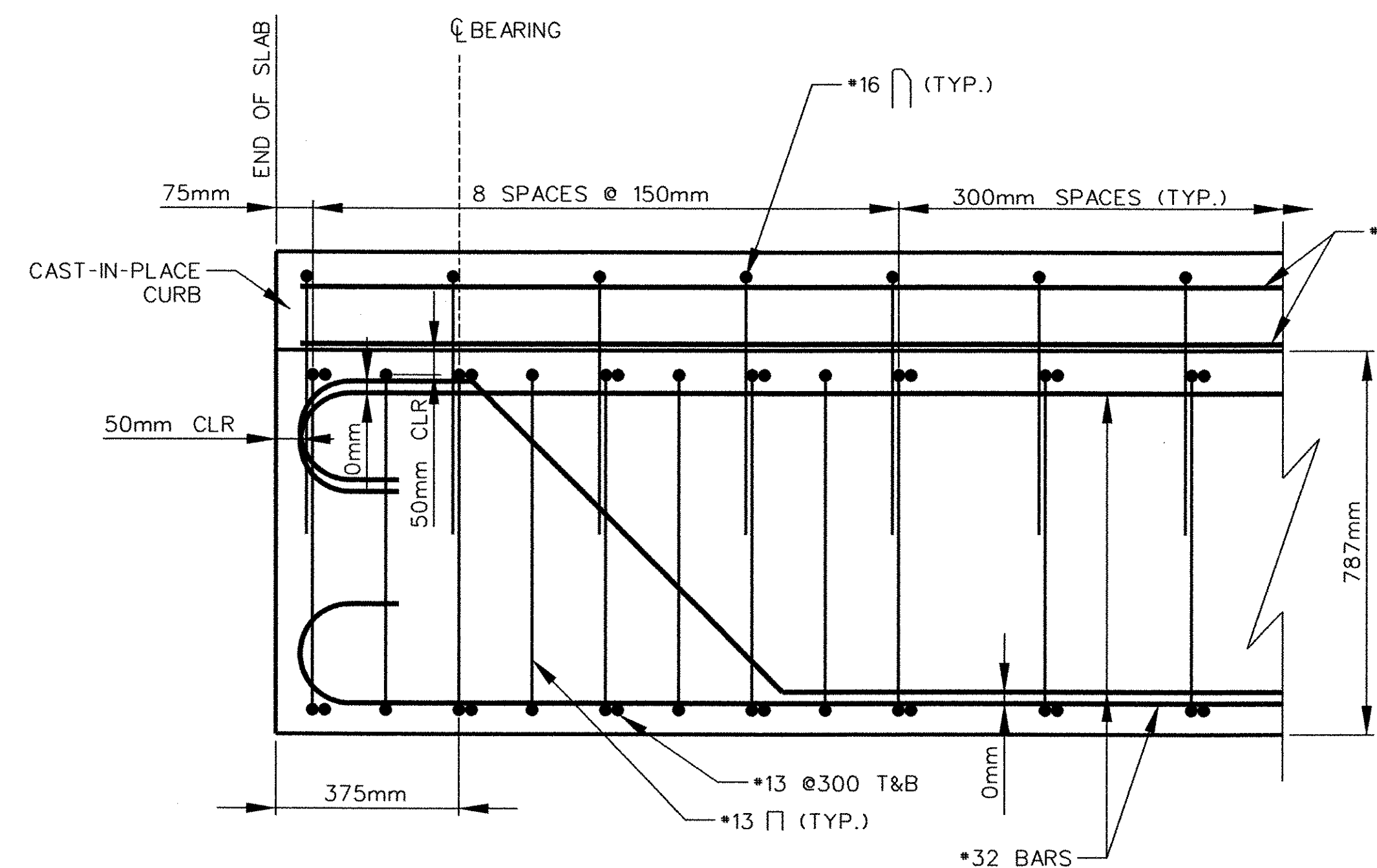
**DECK SLAB NO. 2**  
SCALE 1:10



**END OF SLAB NO. 2**  
**SECTION**  
SCALE 1:10



**DECK SLAB NO. 1**  
SCALE 1:10



**END OF SLAB NO. 1**  
**SECTION**  
SCALE 1:10

**PRECAST CONCRETE NOTES**

- MEMBERS SHOWN ARE SIMILAR, IN SIZE AND REINFORCEMENT LAYOUT, TO THE BOSTON AND MAINE RAILROAD'S STANDARD REINFORCED CONCRETE SLAB WHICH WAS USED IN THE ORIGINAL CONSTRUCTION.
- MEMBERS ARE TO BE PRECAST CONCRETE. THE FABRICATION OF THESE BEAMS SHALL CONFORM TO AREMA AND VTRANS STANDARD PROCEDURES FOR PRECAST CONCRETE.
- PRECAST CONCRETE MEMBERS SHALL HAVE A MINIMUM COMPRESSIVE STRENGTH OF 35 MPa.
- TOP OF ALL BEAMS SHALL BE GIVEN A SMOOTH FINISH EXCEPT UNDER AREA OF CAST-IN-PLACE CURB. AREAS UNDER THE CURB SHALL HAVE A RAKE FINISH WITH AN AMPLITUDE OF 6 mm.
- THE FABRICATOR IS RESPONSIBLE FOR THE DESIGN AND LOCATION OF LIFTING DEVICES. THE DEVICES SHALL BE DESIGNED FOR FACTORS OF SAFETY REQUIRED BY THE ERECTION PROCEDURE.
- ALL REINFORCEMENT SHALL BE EPOXY COATED, GRADE 420, AASHTO M 31M/m 31 (ASTM A-615-S1) BILLET STEEL BARS.

<b>STATE OF VERMONT</b>			
<b>AGENCY OF TRANSPORTATION</b>			
Town Of	BRATTLEBORO	Bridge No.	62.51
Highway No.	VT. ROUTE 9	Log Sta.	
		Surv. Sta.	
SARGENT BROOK			
CONCRETE DECK SLAB			
Designed By	LM	Drawn By	DHL
Checked By	GJB	Date	
		Bridge Design Supervisor	
		JHR	Date
PROJECT	BRATTLEBORO	PROJECT NO.	NH 010-2(2)
I.G.C. Info.			
Bridge Sheet No. 3		Sheet 92	of 145

Plot Date: 10-02-2002  
File: sgtr150