



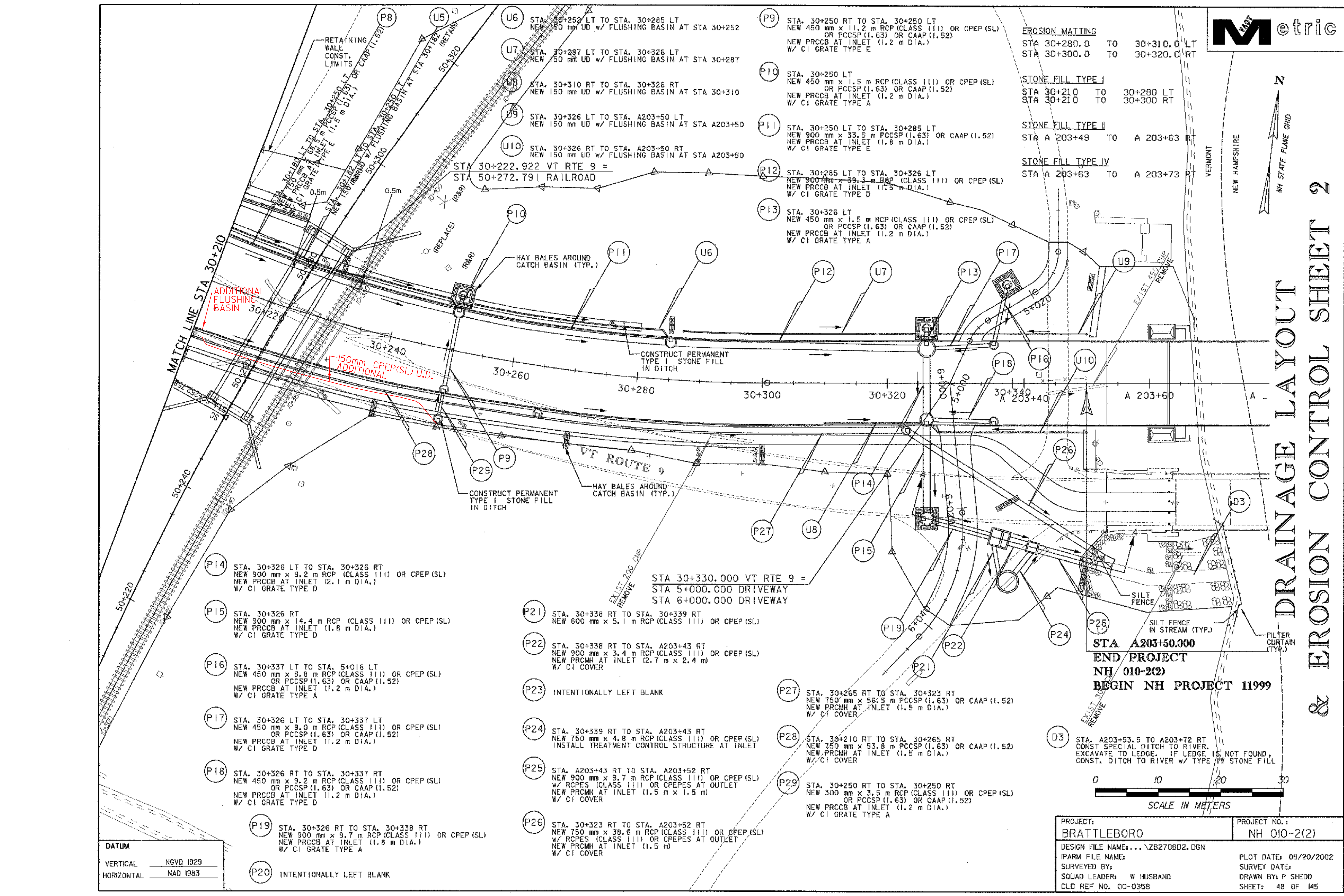
DRAINAGE LAYOUT & EROSION CONTROL SHEET 2

EROSION MATTING
 STA 30+280.0 TO 30+310.0 LT
 STA 30+300.0 TO 30+320.0 RT

STONE FILL TYPE I
 STA 30+210 TO 30+280 LT
 STA 30+210 TO 30+300 RT

STONE FILL TYPE II
 STA A 203+49 TO A 203+63 RT

STONE FILL TYPE IV
 STA A 203+63 TO A 203+73 RT



- (P14) STA. 30+326 LT TO STA. 30+326 RT
NEW 900 mm x 9.2 m RCP (CLASS III) OR CPEP (SL)
NEW PRCCB AT INLET (2.1 m DIA.)
W/ CI GRATE TYPE D
- (P15) STA. 30+326 RT
NEW 900 mm x 14.4 m RCP (CLASS III) OR CPEP (SL)
NEW PRCCB AT INLET (1.8 m DIA.)
W/ CI GRATE TYPE D
- (P16) STA. 30+337 LT TO STA. 5+016 LT
NEW 450 mm x 8.8 m RCP (CLASS III) OR CPEP (SL)
OR PCCSP (1.63) OR CAAP (1.52)
NEW PRCCB AT INLET (1.2 m DIA.)
W/ CI GRATE TYPE A
- (P17) STA. 30+326 LT TO STA. 30+337 LT
NEW 450 mm x 9.0 m RCP (CLASS III) OR CPEP (SL)
OR PCCSP (1.63) OR CAAP (1.52)
NEW PRCCB AT INLET (1.2 m DIA.)
W/ CI GRATE TYPE D
- (P18) STA. 30+326 RT TO STA. 30+337 RT
NEW 450 mm x 9.2 m RCP (CLASS III) OR CPEP (SL)
OR PCCSP (1.63) OR CAAP (1.52)
NEW PRCCB AT INLET (1.2 m DIA.)
W/ CI GRATE TYPE D
- (P19) STA. 30+326 RT TO STA. 30+338 RT
NEW 900 mm x 9.7 m RCP (CLASS III) OR CPEP (SL)
NEW PRCCB AT INLET (1.8 m DIA.)
W/ CI GRATE TYPE A
- (P20) INTENTIONALLY LEFT BLANK

- (P21) STA. 30+338 RT TO STA. 30+339 RT
NEW 600 mm x 5.1 m RCP (CLASS III) OR CPEP (SL)
- (P22) STA. 30+338 RT TO STA. A203+43 RT
NEW 900 mm x 3.4 m RCP (CLASS III) OR CPEP (SL)
NEW PRCMH AT INLET (2.7 m x 2.4 m)
W/ CI COVER
- (P23) INTENTIONALLY LEFT BLANK
- (P24) STA. 30+339 RT TO STA. A203+43 RT
NEW 750 mm x 4.8 m RCP (CLASS III) OR CPEP (SL)
INSTALL TREATMENT CONTROL STRUCTURE AT INLET
- (P25) STA. A203+43 RT TO STA. A203+52 RT
NEW 900 mm x 9.7 m RCP (CLASS III) OR CPEP (SL)
W/ RCPES (CLASS III) OR CPEPES AT OUTLET
NEW PRCMH AT INLET (1.5 m x 1.5 m)
W/ CI COVER
- (P26) STA. 30+323 RT TO STA. A203+52 RT
NEW 750 mm x 38.8 m RCP (CLASS III) OR CPEP (SL)
W/ RCPES (CLASS III) OR CPEPES AT OUTLET
NEW PRCMH AT INLET (1.5 m)
W/ CI COVER

- (P9) STA. 30+250 RT TO STA. 30+250 LT
NEW 450 mm x 11.2 m RCP (CLASS III) OR CPEP (SL)
OR PCCSP (1.63) OR CAAP (1.52)
NEW PRCCB AT INLET (1.2 m DIA.)
W/ CI GRATE TYPE E
- (P10) STA. 30+250 LT
NEW 450 mm x 1.5 m RCP (CLASS III) OR CPEP (SL)
OR PCCSP (1.63) OR CAAP (1.52)
NEW PRCCB AT INLET (1.2 m DIA.)
W/ CI GRATE TYPE A
- (P11) STA. 30+250 LT TO STA. 30+285 LT
NEW 900 mm x 33.5 m PCCSP (1.63) OR CAAP (1.52)
NEW PRCCB AT INLET (1.8 m DIA.)
W/ CI GRATE TYPE E
- (P12) STA. 30+285 LT TO STA. 30+326 LT
NEW 900 mm x 39.3 m RCP (CLASS III) OR CPEP (SL)
NEW PRCCB AT INLET (1.5 m DIA.)
W/ CI GRATE TYPE D
- (P13) STA. 30+326 LT
NEW 450 mm x 1.5 m RCP (CLASS III) OR CPEP (SL)
OR PCCSP (1.63) OR CAAP (1.52)
NEW PRCCB AT INLET (1.2 m DIA.)
W/ CI GRATE TYPE A
- (P14) STA. 30+326 LT TO STA. 30+326 RT
NEW 900 mm x 9.2 m RCP (CLASS III) OR CPEP (SL)
NEW PRCCB AT INLET (2.1 m DIA.)
W/ CI GRATE TYPE D
- (P15) STA. 30+326 RT
NEW 900 mm x 14.4 m RCP (CLASS III) OR CPEP (SL)
NEW PRCCB AT INLET (1.8 m DIA.)
W/ CI GRATE TYPE D
- (P16) STA. 30+337 LT TO STA. 5+016 LT
NEW 450 mm x 8.8 m RCP (CLASS III) OR CPEP (SL)
OR PCCSP (1.63) OR CAAP (1.52)
NEW PRCCB AT INLET (1.2 m DIA.)
W/ CI GRATE TYPE A
- (P17) STA. 30+326 LT TO STA. 30+337 LT
NEW 450 mm x 9.0 m RCP (CLASS III) OR CPEP (SL)
OR PCCSP (1.63) OR CAAP (1.52)
NEW PRCCB AT INLET (1.2 m DIA.)
W/ CI GRATE TYPE D
- (P18) STA. 30+326 RT TO STA. 30+337 RT
NEW 450 mm x 9.2 m RCP (CLASS III) OR CPEP (SL)
OR PCCSP (1.63) OR CAAP (1.52)
NEW PRCCB AT INLET (1.2 m DIA.)
W/ CI GRATE TYPE D
- (P19) STA. 30+326 RT TO STA. 30+338 RT
NEW 900 mm x 9.7 m RCP (CLASS III) OR CPEP (SL)
NEW PRCCB AT INLET (1.8 m DIA.)
W/ CI GRATE TYPE A
- (P20) INTENTIONALLY LEFT BLANK
- (P21) STA. 30+338 RT TO STA. 30+339 RT
NEW 600 mm x 5.1 m RCP (CLASS III) OR CPEP (SL)
- (P22) STA. 30+338 RT TO STA. A203+43 RT
NEW 900 mm x 3.4 m RCP (CLASS III) OR CPEP (SL)
NEW PRCMH AT INLET (2.7 m x 2.4 m)
W/ CI COVER
- (P23) INTENTIONALLY LEFT BLANK
- (P24) STA. 30+339 RT TO STA. A203+43 RT
NEW 750 mm x 4.8 m RCP (CLASS III) OR CPEP (SL)
INSTALL TREATMENT CONTROL STRUCTURE AT INLET
- (P25) STA. A203+43 RT TO STA. A203+52 RT
NEW 900 mm x 9.7 m RCP (CLASS III) OR CPEP (SL)
W/ RCPES (CLASS III) OR CPEPES AT OUTLET
NEW PRCMH AT INLET (1.5 m x 1.5 m)
W/ CI COVER
- (P26) STA. 30+323 RT TO STA. A203+52 RT
NEW 750 mm x 38.8 m RCP (CLASS III) OR CPEP (SL)
W/ RCPES (CLASS III) OR CPEPES AT OUTLET
NEW PRCMH AT INLET (1.5 m)
W/ CI COVER
- (P27) STA. 30+265 RT TO STA. 30+323 RT
NEW 750 mm x 56.5 m PCCSP (1.63) OR CAAP (1.52)
NEW PRCMH AT INLET (1.5 m DIA.)
W/ CI COVER
- (P28) STA. 30+210 RT TO STA. 30+265 RT
NEW 750 mm x 53.8 m PCCSP (1.63) OR CAAP (1.52)
NEW PRCMH AT INLET (1.5 m DIA.)
W/ CI COVER
- (P29) STA. 30+250 RT TO STA. 30+250 RT
NEW 300 mm x 3.5 m RCP (CLASS III) OR CPEP (SL)
OR PCCSP (1.63) OR CAAP (1.52)
NEW PRCCB AT INLET (1.2 m DIA.)
W/ CI GRATE TYPE A

DATUM
 VERTICAL NGVD 1929
 HORIZONTAL NAD 1983

PROJECT: BRATTLEBORO	PROJECT NO. 1: NH 010-2(2)
DESIGN FILE NAME: ... \ZB270B02.DGN	PLOT DATE: 09/20/2002
IPARM FILE NAME:	SURVEY DATE:
SURVEYED BY:	DRAWN BY: P SHEDD
SQUAD LEADER: W HUSBAND	SHEET: 48 OF 145
CLD REF NO. 00-0358	

