

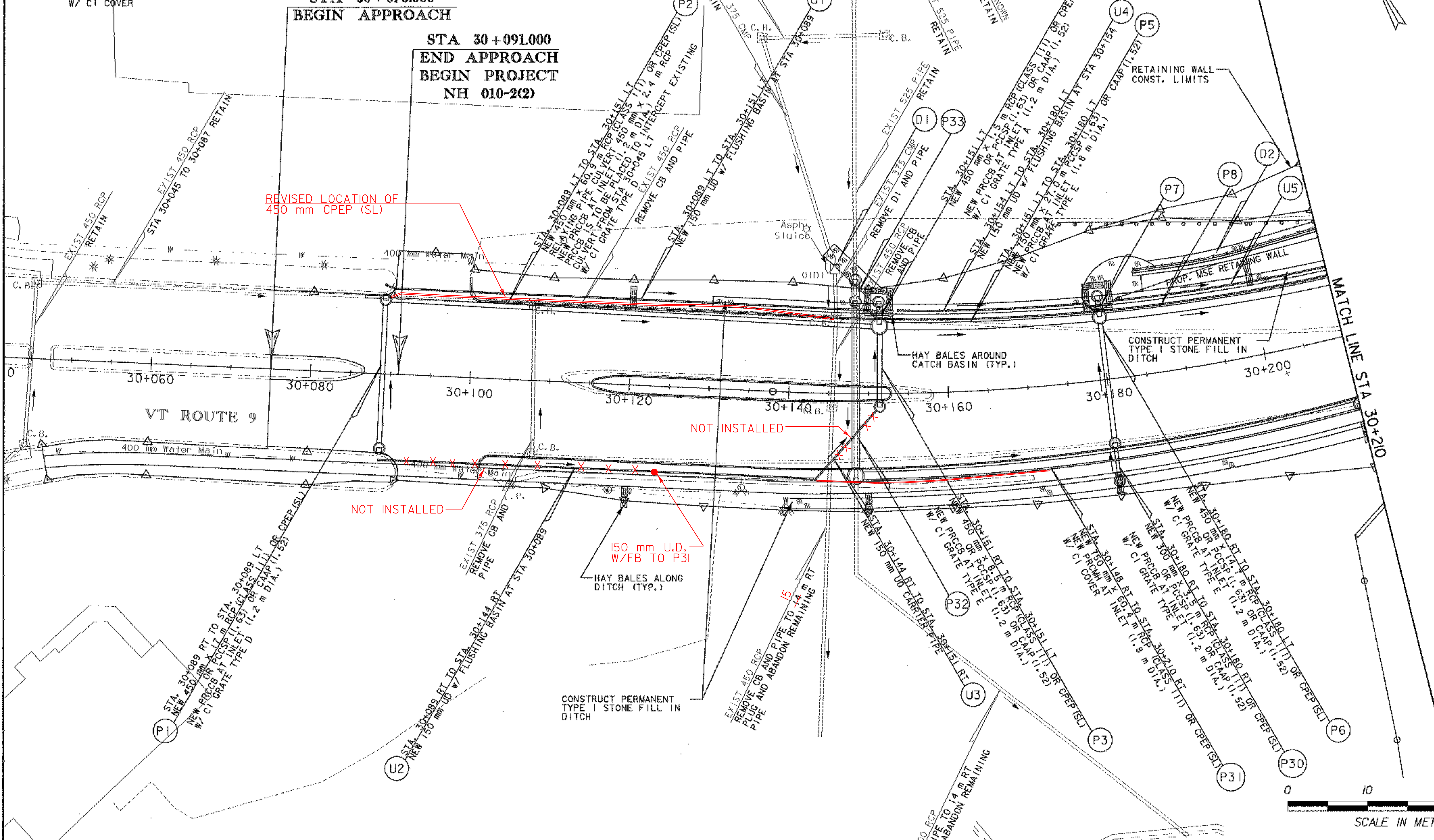
DRAINAGE LAYOUT & EROSION CONTROL SHEET I

- (D1) STA. 30+147 LT
CONST SPECIAL DITCH
8 m x 2 m TYPE I STONE FILL
- (P32) STA. 30+148 RT TO STA. 30+148 LT
NEW 750 mm x 2.4 m RCP (CLASS III) OR CPEP (SL)
NEW PRCMH AT INLET (1.5 m DIA.)
W/ CI COVER
- (P33) STA. 30+148 LT TO STA. 30+148 LT
NEW 750 mm x 2.4 m RCP (CLASS III) OR CPEP (SL)
RELAYING PIPE CULVERT 525 mm x 2.4 m RCP
NEW PRCMH AT INLET (1.5 m DIA.)
PRCMH IS TO BE PLACED TO INTERCEPT EXISTING
CULVERT FROM STA 30+148 LT
W/ CI COVER

- (D2) STA. 30+180 TO STA. 30+220 LT
CONST SPECIAL DITCH
TYPE I STONE FILL
- (P7) STA. 30+180 LT
NEW 450 mm x 1.5 m RCP (CLASS III) OR CPEP (SL)
OR PCCSP (1.63) OR CAAP (1.52)
NEW PRCCB AT INLET (1.2 m DIA.)
W/ CI GRATE TYPE A

- (P8) STA. 30+180 LT TO STA. 30+250 LT
NEW 750 mm x 68.5 m PCCSP (1.63) OR CAAP (1.52)
NEW PRCCB AT INLET (1.5 m DIA.)
W/ CI GRATE TYPE E

- (U5) STA. 30+182 LT TO STA. 30+250 LT
NEW 150 mm UD W/ FLUSHING BASIN AT STA 30+182



| | |
|-------------------------|--------------------------|
| EROSION MATTING | STONE FILL TYPE I |
| STA 30+100 TO 30+130 LT | STA 30+130 TO 30+210 LT |
| STA 30+110 TO 30+140 RT | STA 30+140 TO 30+210 RT |

| | |
|--------------|-----------|
| DATUM | |
| VERTICAL | NGVD 1923 |
| HORIZONTAL | NAD 1983 |

| | |
|--|------------------------------------|
| PROJECT: BRATTLEBORO | PROJECT NO.: NH 010-2(2) |
| DESIGN FILE NAME: ...zb270bd2.dgn | PLOT DATE: 09/20/2002 |
| IPARM FILE NAME: | SURVEY DATE: |
| SURVEYED BY: | DRAWN BY: P SHEDD |
| SQUAD LEADER: W HUSBAND | SHEET: 47 OF 145 |
| CLD REF NO.: 00-0358 | |