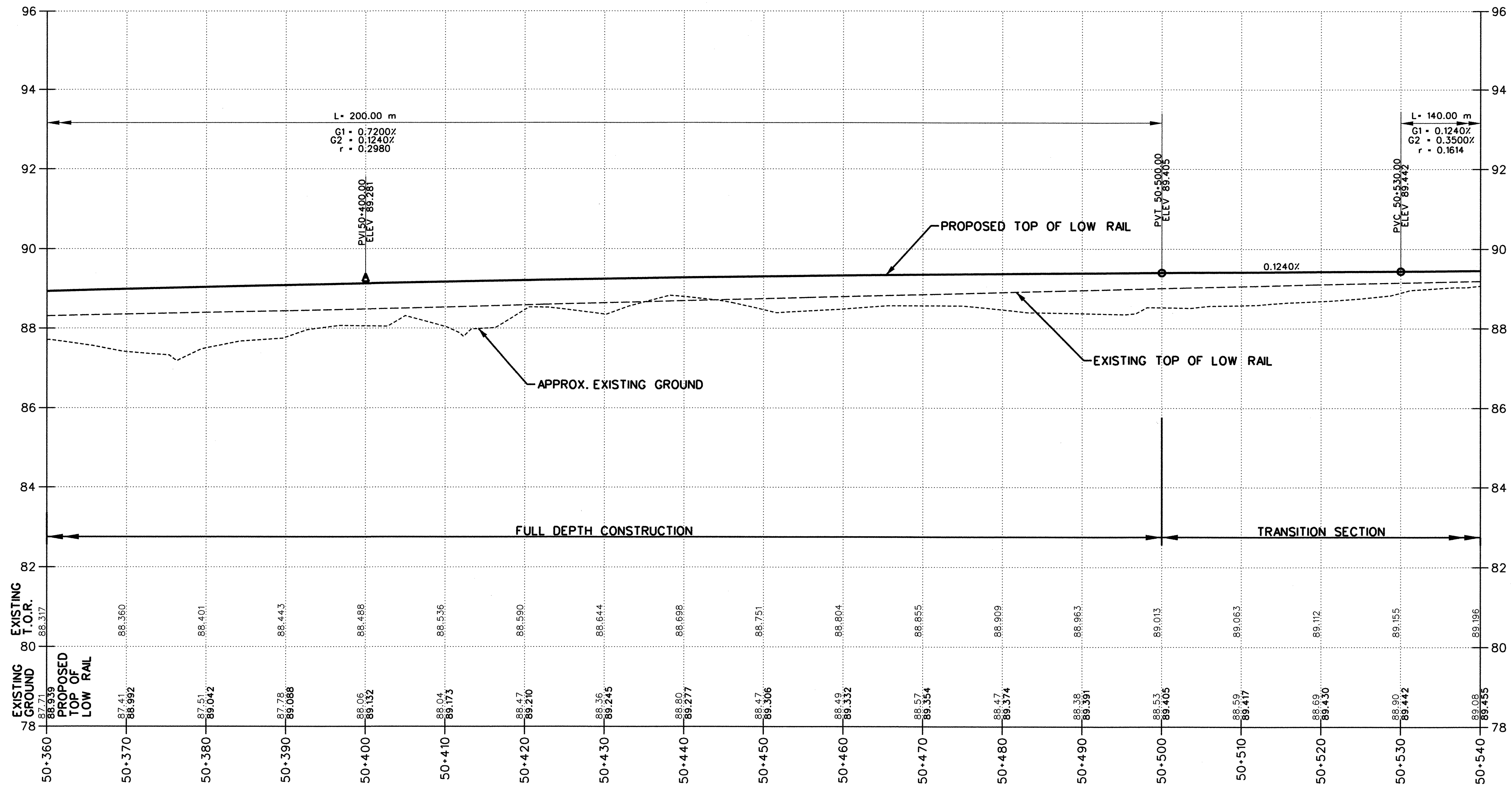
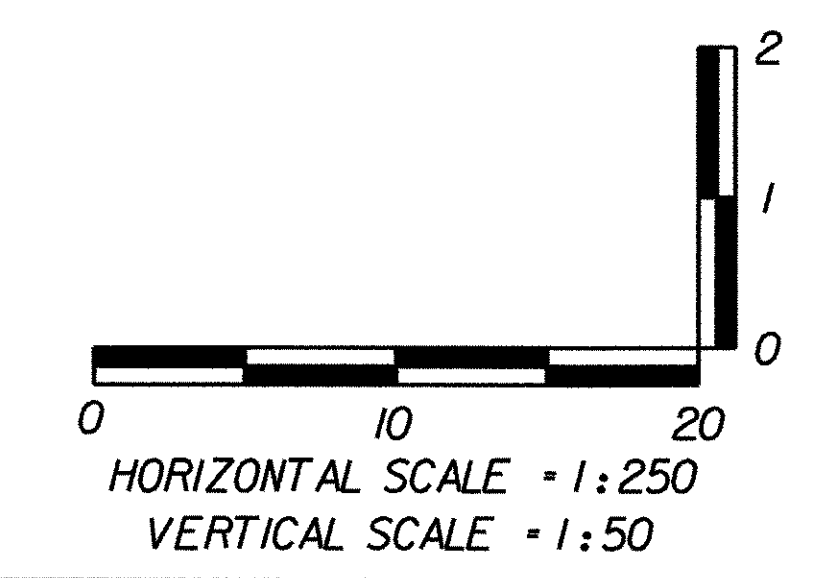


RAILROAD PROFILE



Station	Existing Ground	Proposed Top of Low Rail
50+360	87.71	88.639
50+370	87.41	88.360
50+380	87.51	88.401
50+390	87.78	88.443
50+400	88.06	88.488
50+410	88.04	88.536
50+420	88.47	88.590
50+430	88.36	88.644
50+440	88.80	88.698
50+450	88.47	88.751
50+460	88.48	88.804
50+470	88.57	88.855
50+480	88.47	88.909
50+490	88.38	88.963
50+500	88.53	89.013
50+510	88.59	89.063
50+520	88.69	89.112
50+530	88.90	89.155
50+540	89.08	89.196



PROJECT: BRATTLEBORO	PROJECT NO.: NH 010-2(2)
DESIGN FILE NAME: U:\99123-Brattleboro\dgn\b270xs1.dgn	IPARM FILE NAME: PLOT DATE: 10-02-2002
NEW ENGLAND CENTRAL RAILROAD	
FROM STA: 50+360.000 TO STA: 50+540.000 SHEET: 45 OF 145	