

GPS CONTROL POINTS

* NO GPS POINTS USED

BENCHMARKS

BM-CHS1 ELEV 111.862
THE STATION IS LOCATED IN CHESTERFIELD, NH

TO REACH THE STATION FROM THE NEW HAMPSHIRE/VERMONT STATE LINE AT THE WEST END OF THE STATE ROUTE 9 BRIDGE OVER THE CONNECTICUT RIVER, GO EAST FOR 0.89 km (0.55 mi) ON ROUTE 9 TO THE STATION ON THE LEFT IN THE NORTHWEST CORNER OF AN ASPHALT APRON.

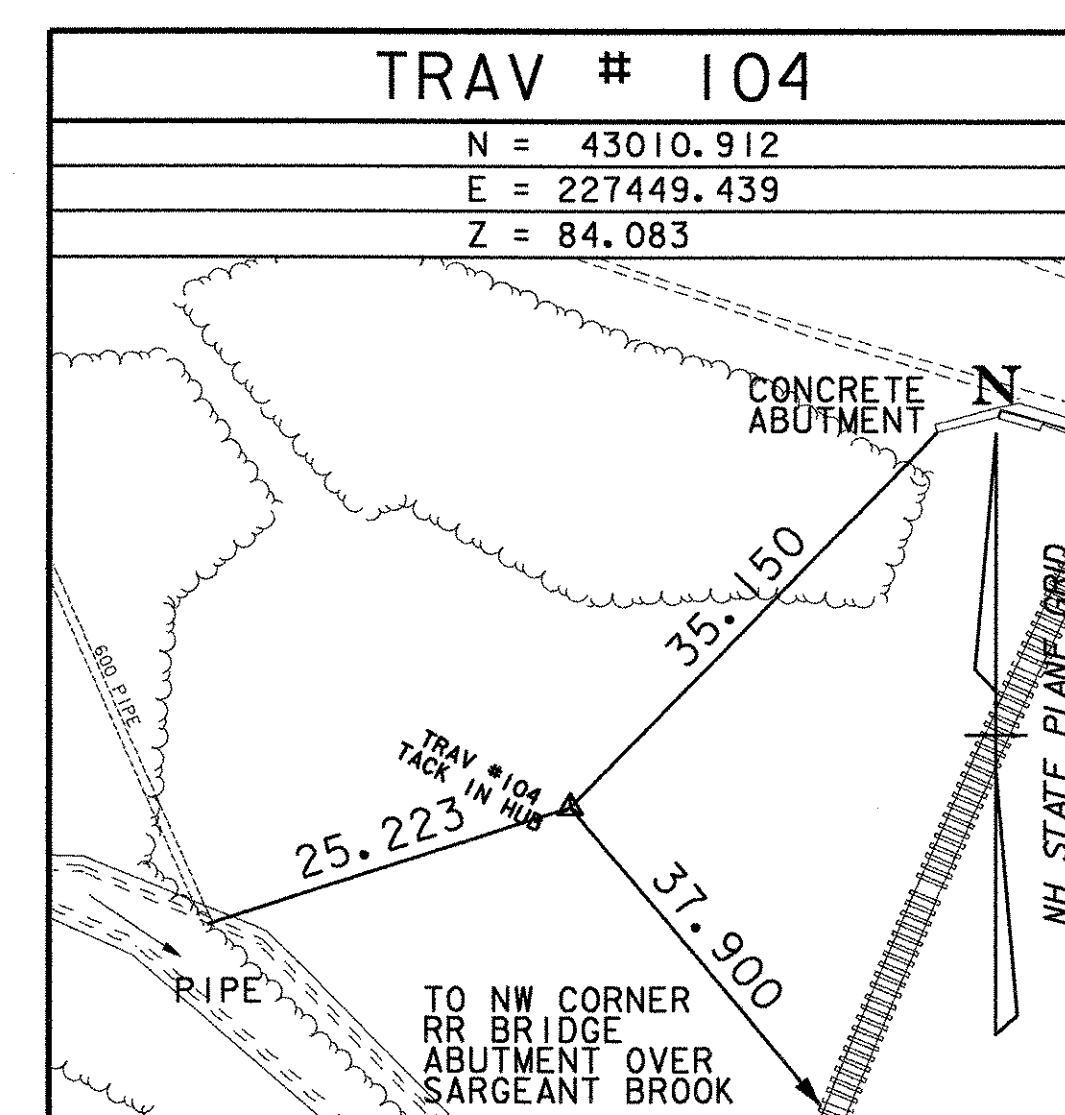
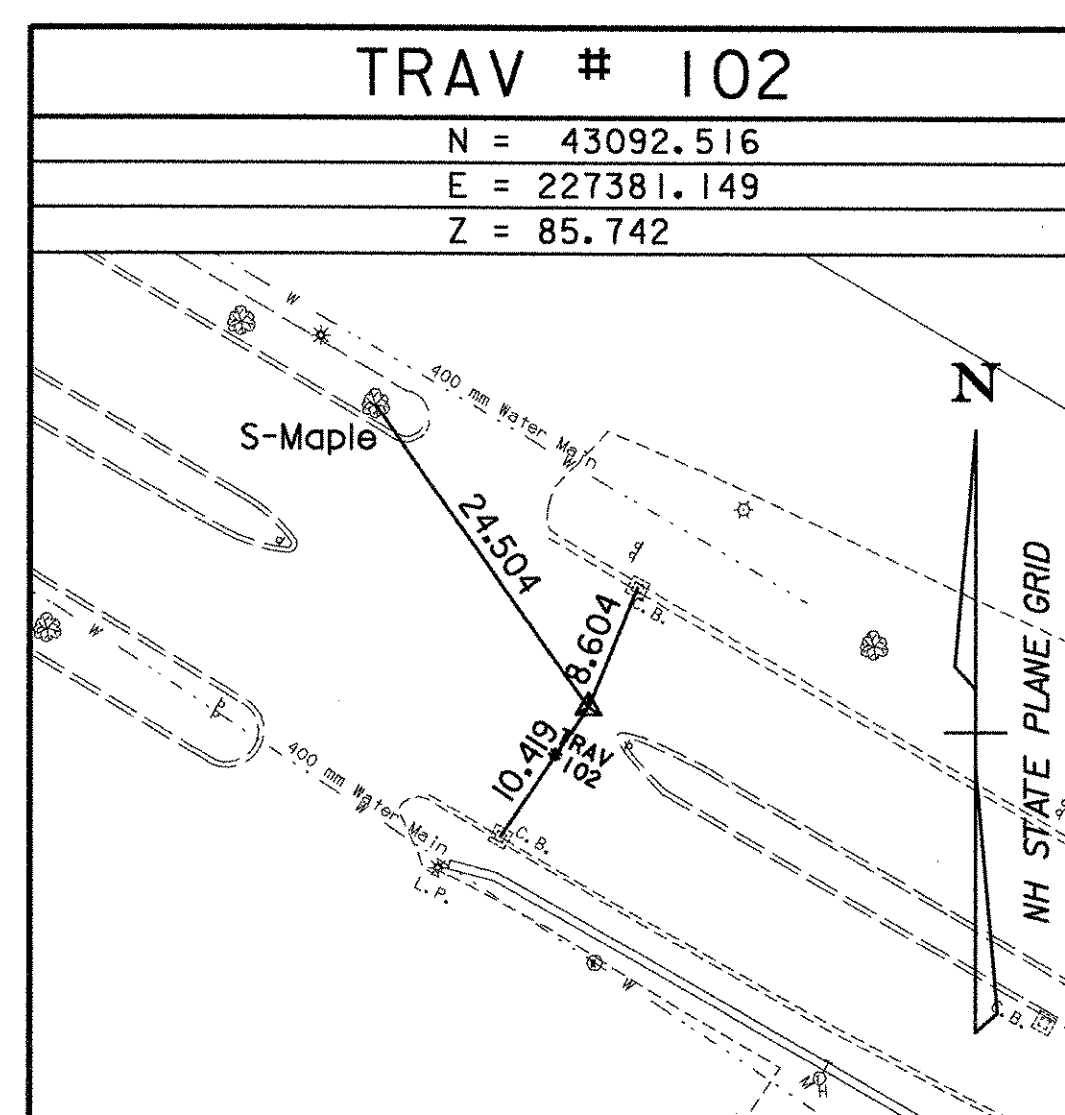
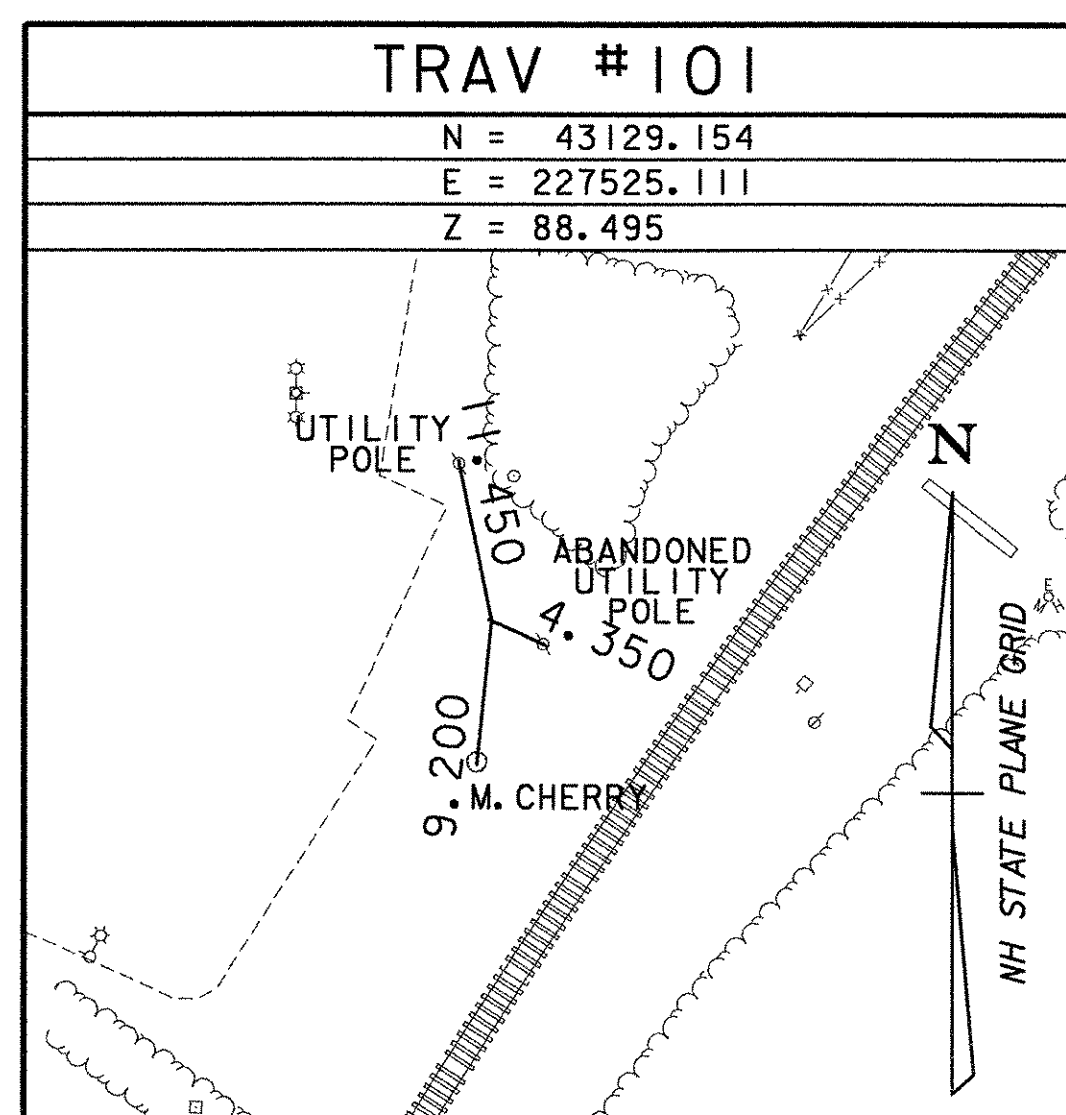
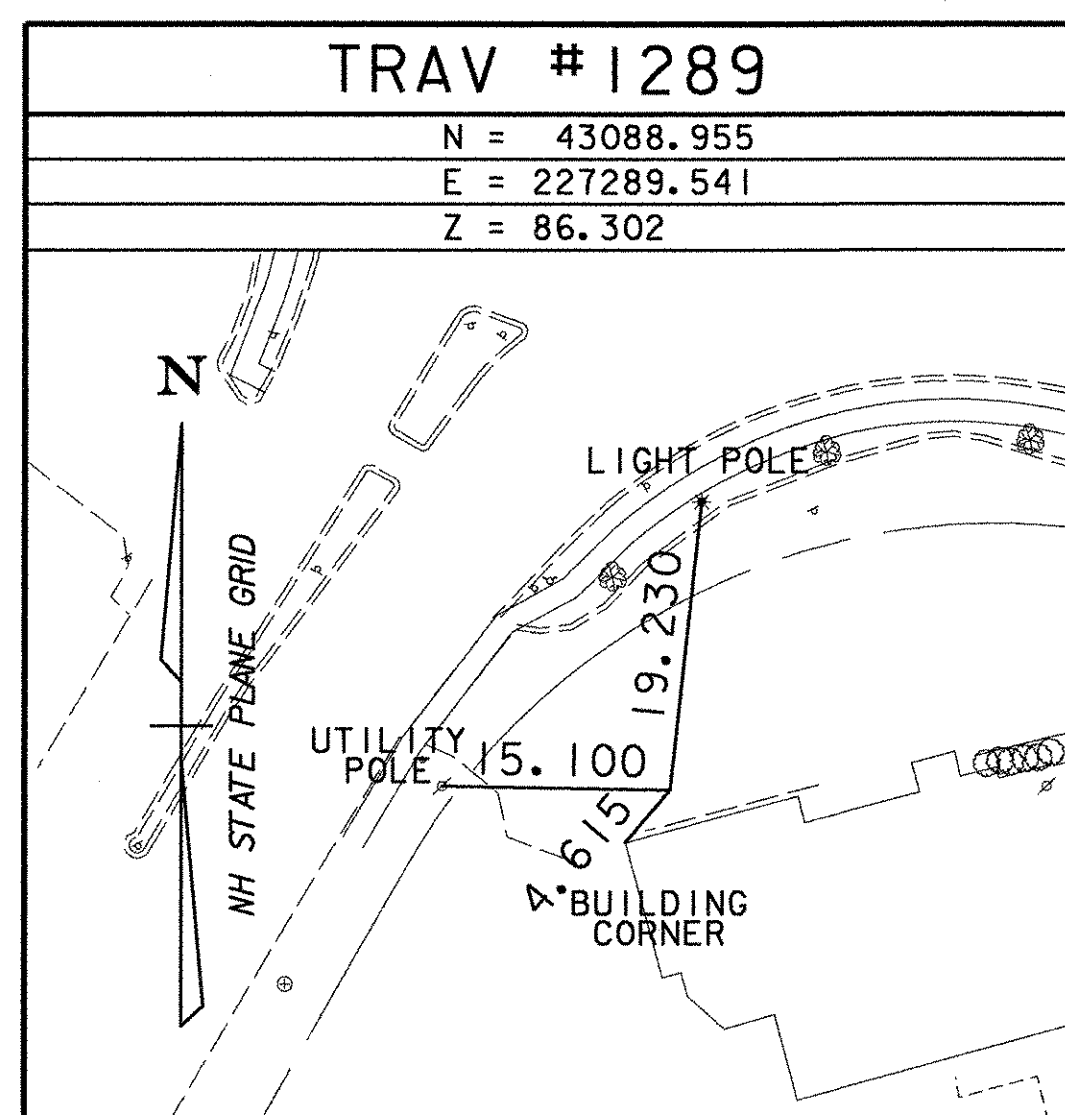
THE STATION IS A STANDARD CENTER-PUNCHED RAILROAD SPIKE DRIVEN FLUSH WITH THE PAVEMENT. LOCATED 10.5 m (34.5 ft) NORTH FROM THE CENTER OF ROUTE 9 AT THE NORTHERN YELLOW LINE, 28.3 m (93.0 ft) EAST FROM POWER POLE 9.5-1/PSNH/101/156X-1, 12.8 m (42.0 ft) WEST FROM THE END OF A 12-INCH METAL PIPE, 3.0 m (10.0 ft) NORTHEAST FROM THE END OF A 12-INCH METAL PIPE, 0.5 m (1.5 ft) SOUTH FROM THE NORTH EDGE OF PAVEMENT.

BM-CHS2 ELEV 117.426
THE STATION IS LOCATED IN CHESTERFIELD, NH

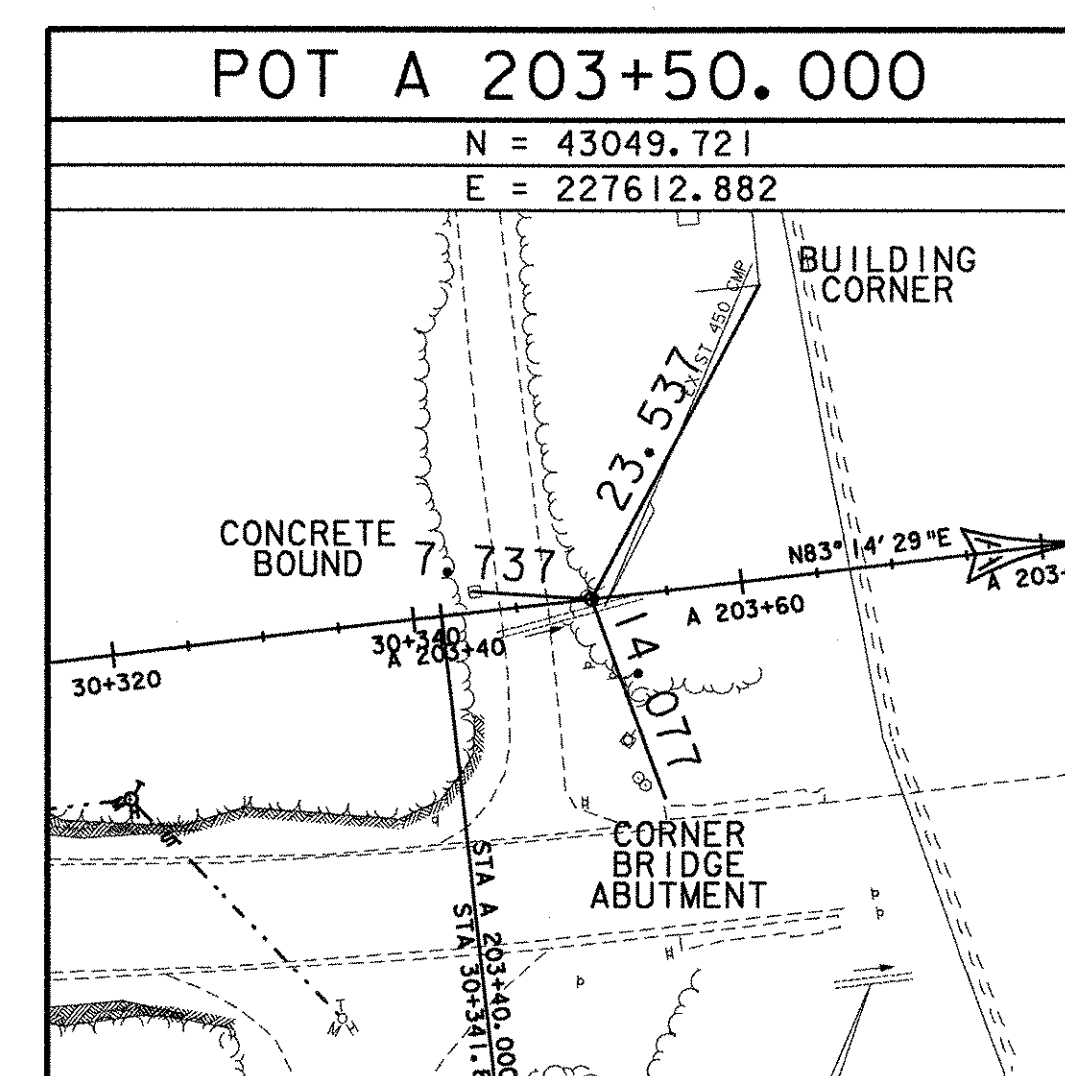
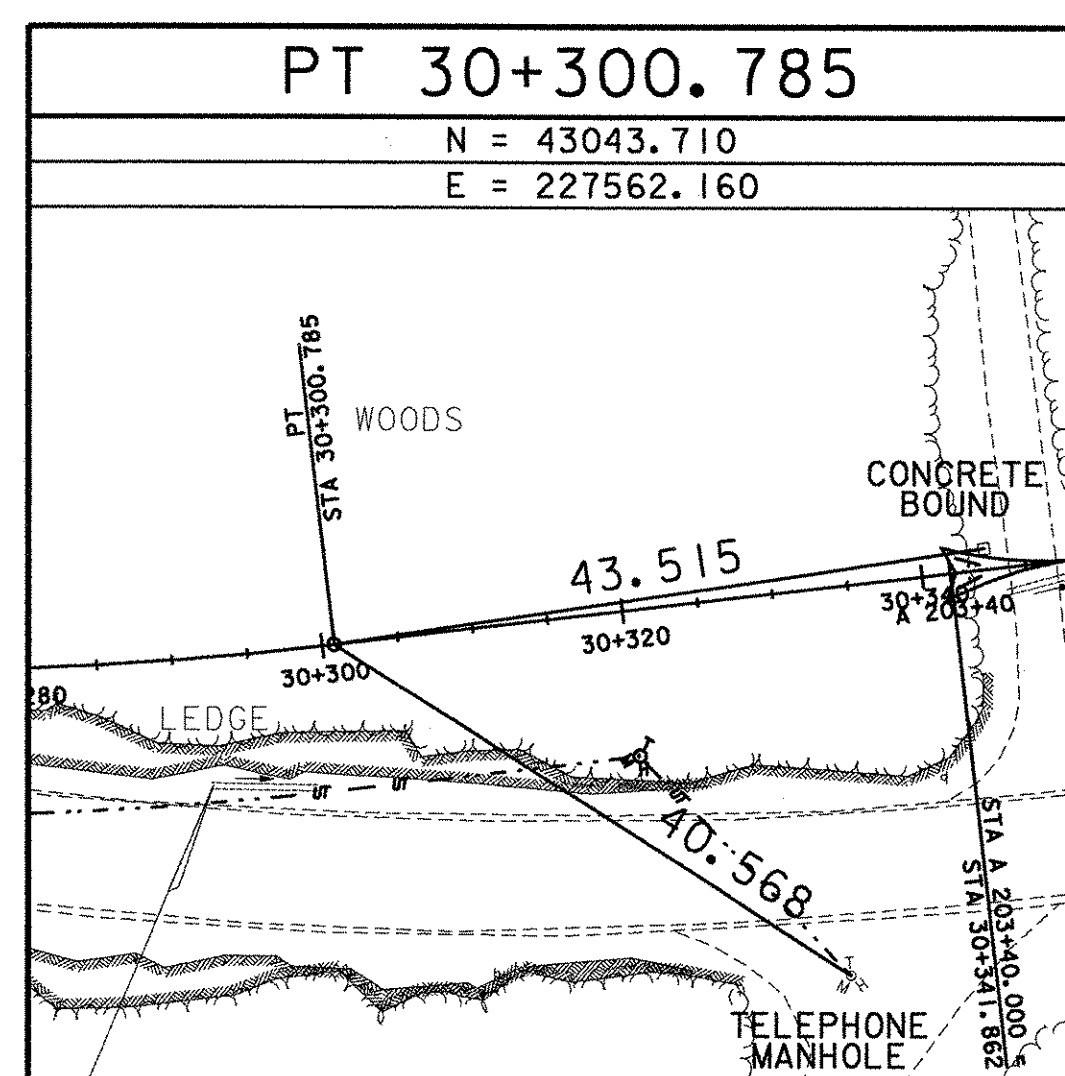
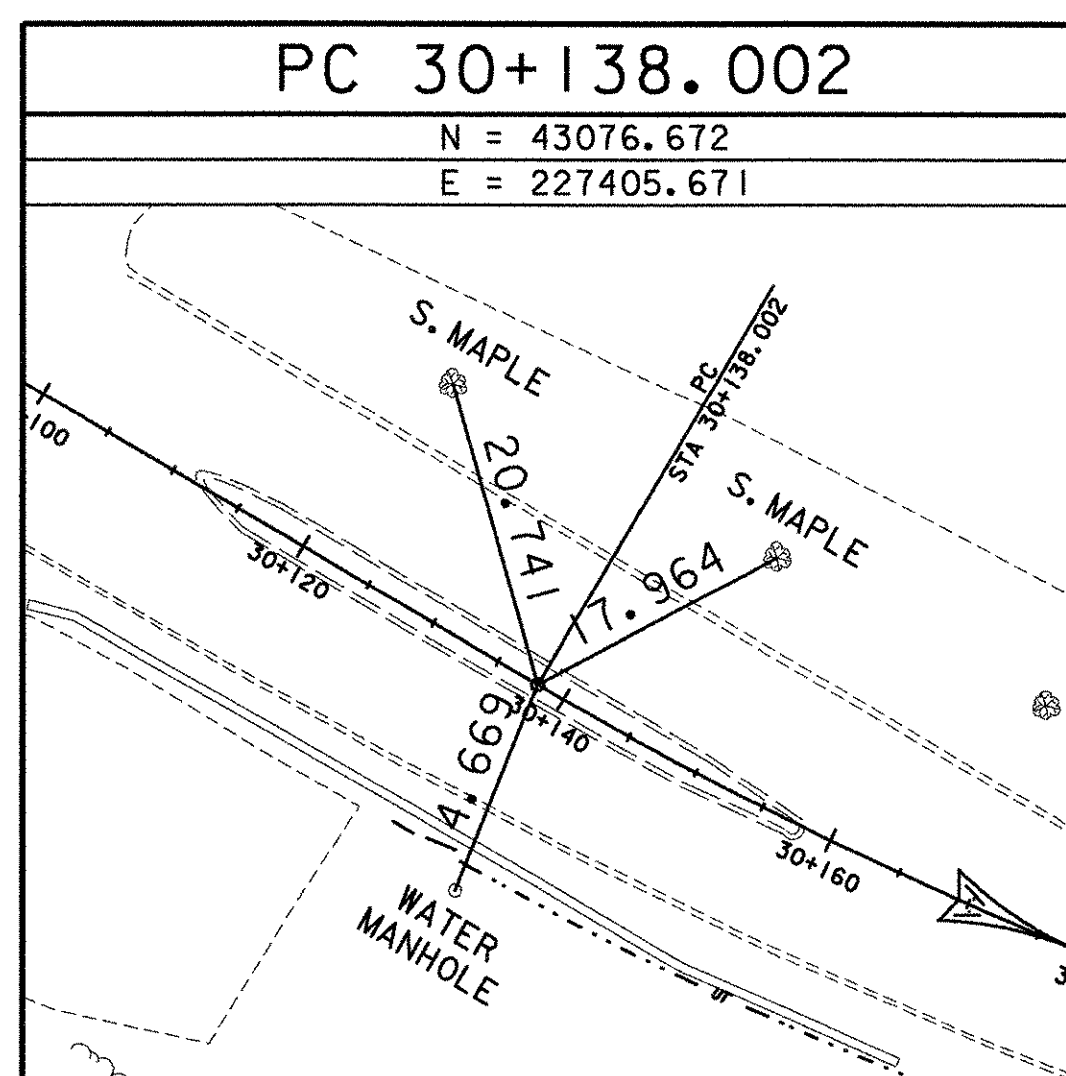
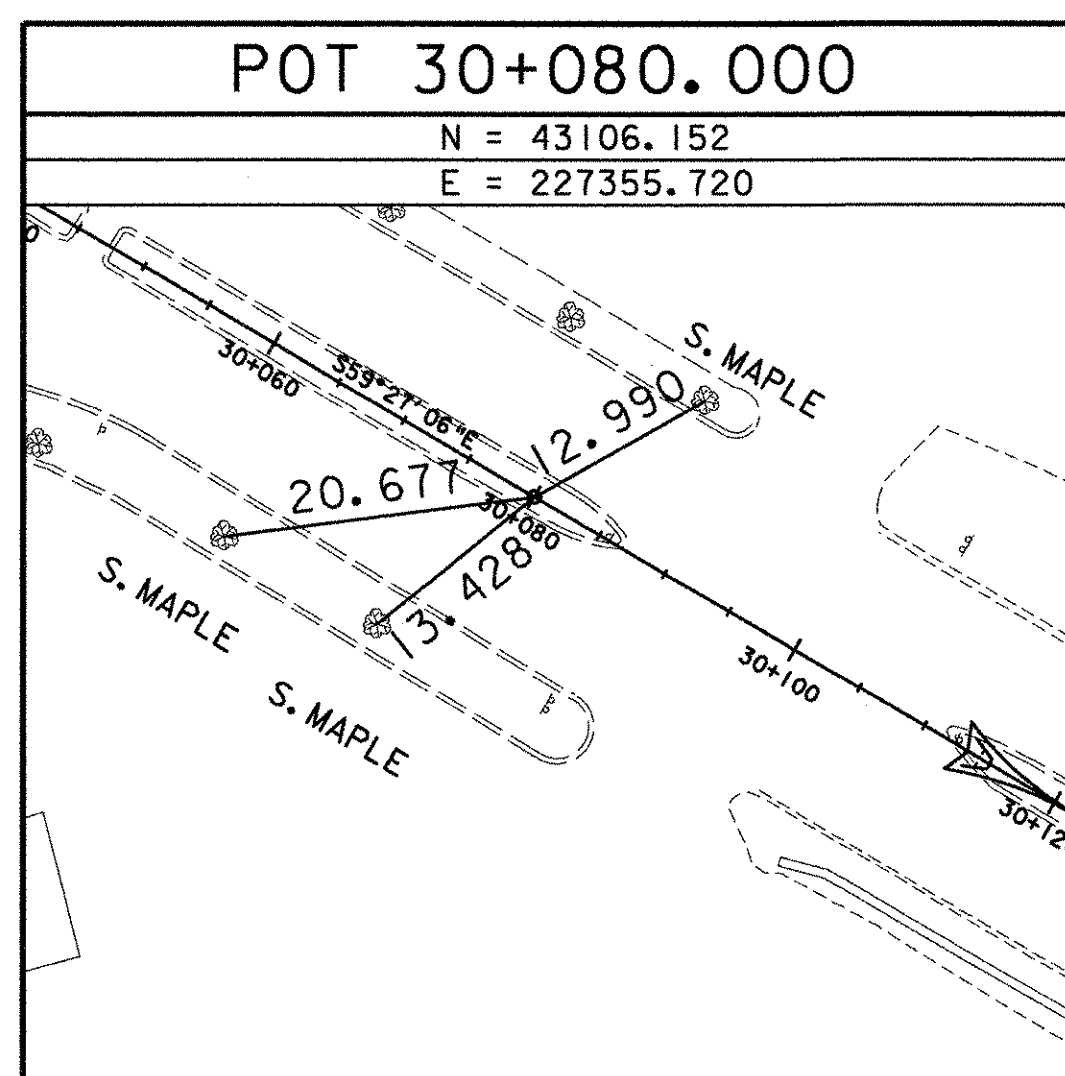
TO REACH THE STATION FROM THE NEW HAMPSHIRE/VERMONT STATE LINE AT THE WEST END OF THE STATE ROUTE 9 BRIDGE OVER THE CONNECTICUT RIVER, GO EAST FOR 1.05 km (0.65 mi) ON ROUTE 9 TO SPAULDING HILL ROAD AND THE STATION ON THE RIGHT.

THE STATION IS A STANDARD NHDOT DISK STAMPED ---087 0340 ---, SET INTO THE TOP OF A 5-INCH SQUARE GRANITE MONUMENT PROJECTING 0.1 ft ABOVE GROUND AND 0.1 ft ABOVE THE LEVEL OF THE HIGHWAY. LOCATED 6.7 m (22.0 ft) SOUTH FROM THE SOUTH EDGE OF PAVEMENT OF ROUTE 9, 57.3 m (188 ft) EAST FROM THE CENTER OF SPAULDING HILL ROAD, 10.4 m (34.0 ft) WEST FROM POLE 2/15T/PSNH/101/154, 0.8 m (2.5 ft) NORTH FROM A DELINEATOR POST.

TRAVERSE TIES



ALIGNMENT TIES



DATUM	
VERTICAL	NGVD 1929
HORIZONTAL	NAD 1983

PROJECT NAME: BRATTLEBORO
PROJECT NUMBER: NH 010-2(2)

FILE NAME: ...zb2701e.dgn
PROJECT LEADER: W HUSBAND
DESIGNED BY: P SHEDD
CLD REF NO. 00-0358

PLOT DATE: 09/20/2002
DRAWN BY: S COHEN
CHECKED BY: J WARNER
SHEET 32 OF 145