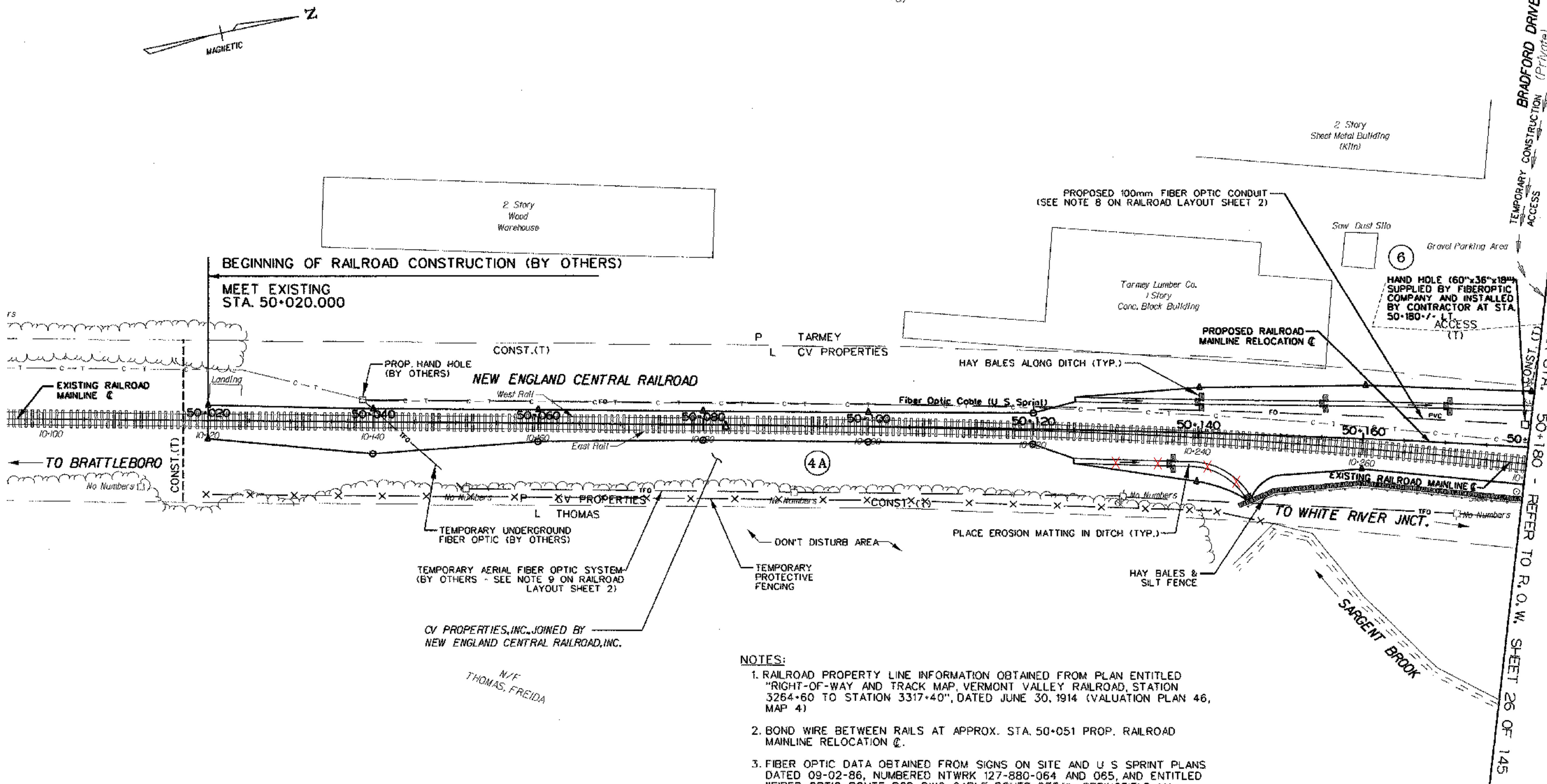


JACK T ARMEY  
REVOCABLE TRUST



**NOTES:**

1. RAILROAD PROPERTY LINE INFORMATION OBTAINED FROM PLAN ENTITLED "RIGHT-OF-WAY AND TRACK MAP, VERMONT VALLEY RAILROAD, STATION 3264+60 TO STATION 3317+40", DATED JUNE 30, 1914 (VALUATION PLAN 46, MAP 4)
2. BOND WIRE BETWEEN RAILS AT APPROX. STA. 50+051 PROP. RAILROAD MAINLINE RELOCATION.
3. FIBER OPTIC DATA OBTAINED FROM SIGNS ON SITE AND U.S. SPRINT PLANS DATED 09-02-86, NUMBERED NTRK 127-880-064 AND 065, AND ENTITLED "FIBER OPTIC ROUTE RCD DWG, CABLE ROUTE DETAIL, SPRINGFIELD, MA - MONTREAL, CANADA."
4. SURVEY INFORMATION OBTAINED BY NHDOT, ELECTRONICALLY TRANSLATED FROM MOSS TO MICROSTATION, AND SUPPLEMENTED BY VTRANS ADDITIONAL SURVEY.
5. SEE VAOT STANDARD DRAWINGS T-1M AND T-2M FOR TEMPORARY EROSION CONTROL DETAILS.

LINES SHOWN ON THIS PLAN AS EXISTING PROPERTY LINES (P/L) ARE BELIEVED TO BE ACCURATE BUT SHOULD NOT BE RELIED UPON FOR PURPOSES UNRELATED TO THE STATE OF VERMONT'S ACQUISITION OF LAND AND RIGHTS FOR THIS PROJECT.

<b>DATUM</b>	
VERTICAL	NGVD 1929
HORIZONTAL	NAD 1983



<b>GENERAL PLAN</b>	
PROJECT NAME:	BRATTLEBORO
PROJECT NUMBER:	NH 010-2(2)
FILE NAME:	ZB270803
PROJECT LEADER:	JHR
DESIGNED BY:	GJB
R.O.W. LAYOUT SHEET	3
PLOT DATE:	10-04-2002
DRAWN BY:	LB/LRD
CHECKED BY:	TEM/JHR
SHEET	25 OF 145