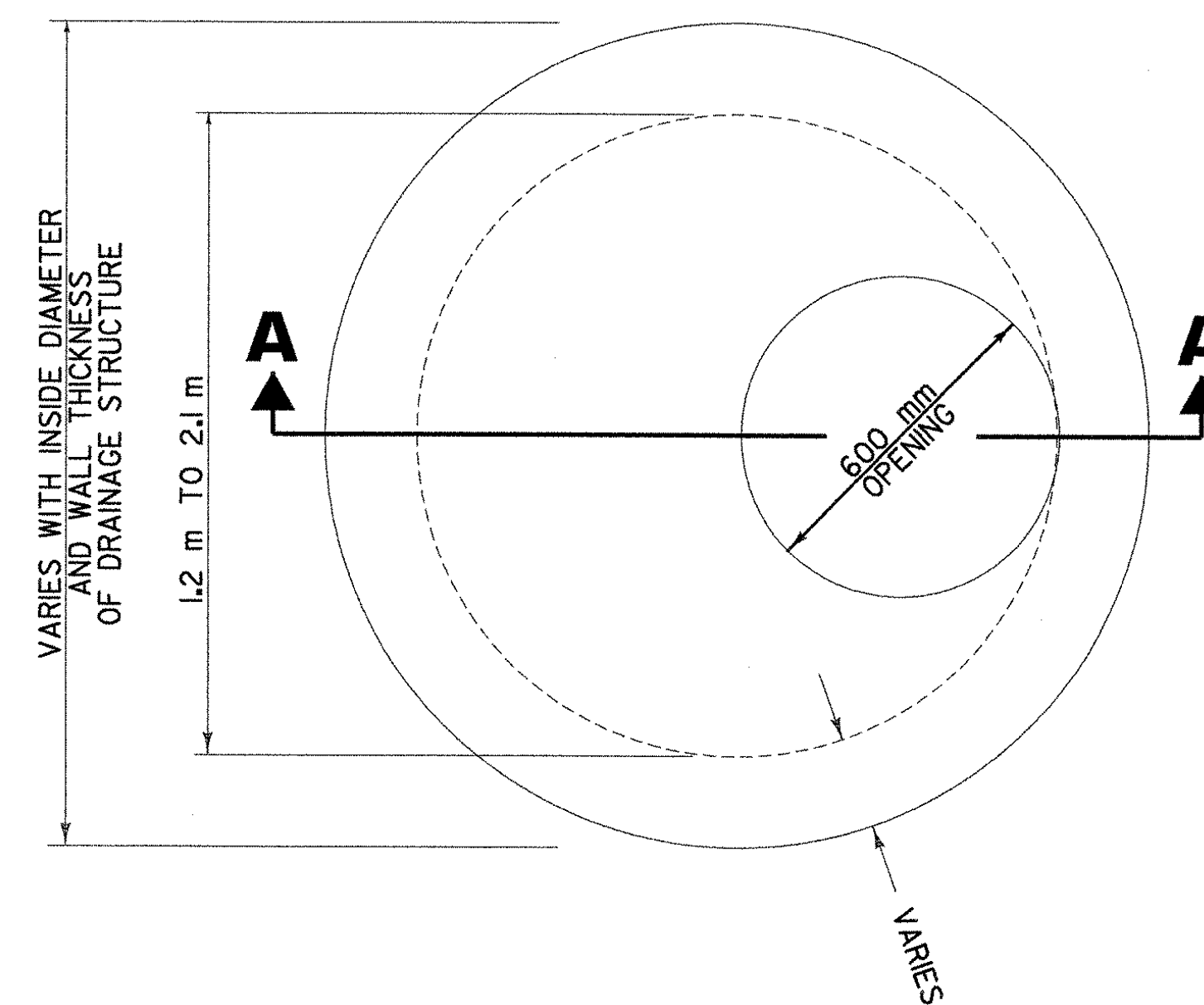
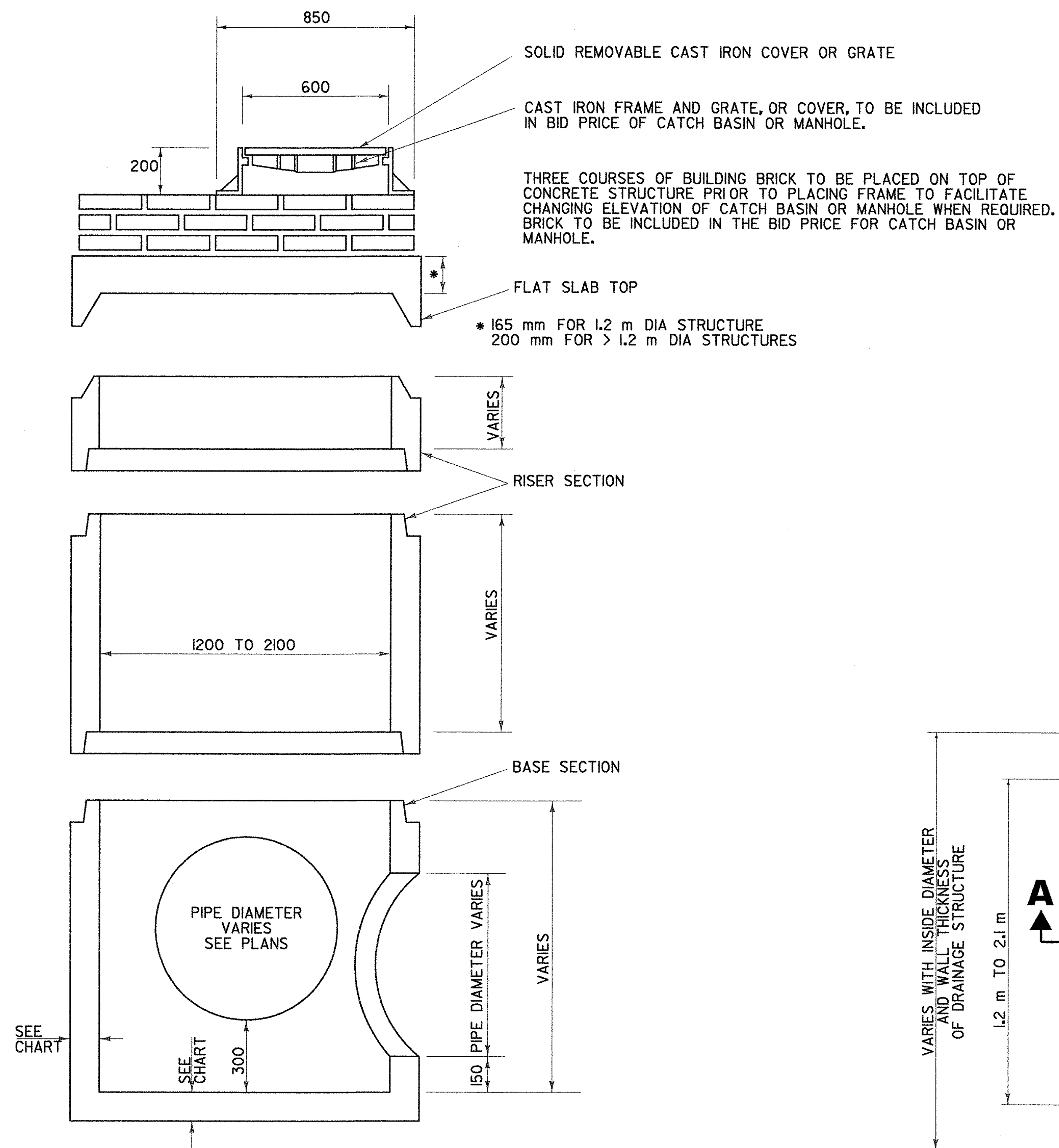


# MISCELLANEOUS DETAILS

## GENERAL NOTES

1. ALL CATCH BASINS SHALL BE CONSTRUCTED WITH PRECAST CONCRETE BASE SECTIONS, RISER SECTIONS AND FLAT SLAB TOPS CONFORMING TO SECTION 705.04 OF THE VERMONT STANDARD SPECIFICATIONS FOR CONSTRUCTION.
2. PRECAST CONCRETE BASE SECTIONS AS SHOWN ON THIS SHEET SHALL BE USED FOR EACH CATCH BASIN. FOOTINGS (CAST-IN-PLACE OR PRECAST) FOR CATCH BASINS ARE NOT ALLOWED.
3. PRECAST SECTIONS SHALL HAVE A TONGUE AND GROOVE JOINT 100 mm HIGH AT AN 11° ANGLE CENTERED IN THE WIDTH OF THE WALL AND SHALL BE ASSEMBLED USING AN APPROVED FLEXIBLE SEALANT IN JOINTS.
4. ALL STRUCTURES WITH MULTIPLE PIPES SHALL HAVE A MINIMUM OF 300 mm OF OUTSIDE SURFACE BETWEEN HOLES, NO MORE THAN 75% OF A HORIZONTAL CROSS-SECTION SHALL BE HOLES, AND THERE SHALL BE NO HOLES CLOSER THAN 75 mm TO JOINTS.



**SECTION A-A**

**PLAN**

## PRECAST REINFORCED CONCRETE CATCH BASIN DETAIL

(NOT TO SCALE)

DIAMETER	WALL THICKNESS (MIN.)	FLOOR THICKNESS (MIN.)
1.2 m	125 mm	150 mm
1.5 m	150 mm	200 mm
1.8 m	175 mm	200 mm
2.1 m	200 mm	250 mm

NOTE: UNLESS OTHERWISE NOTED IN THESE PLANS, ALL ELEVATIONS ARE IN METERS AND ALL DIMENSIONS ARE IN MILLIMETERS

DATUM	
VERTICAL	NGVD 1929
HORIZONTAL	NAD 1983

PROJECT: BRATTLEBORO	PROJECT NO.: NH 010-2(2)
DESIGN FILE NAME: ...zb270+yp.dgn	PLOT DATE: 09/25/2002
IPARM FILE NAME:	SURVEYED BY:
SQUAD LEADER: W HUSBAND	DRAWN BY: P SHEDD
CLD REF NO. 00-0358	SHEET: IIA OF 145