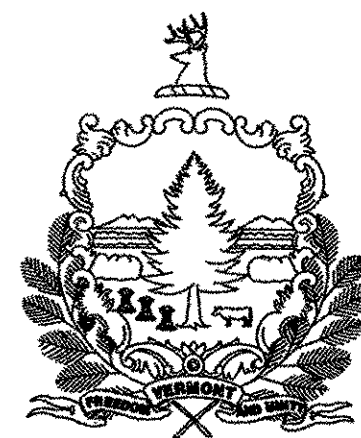
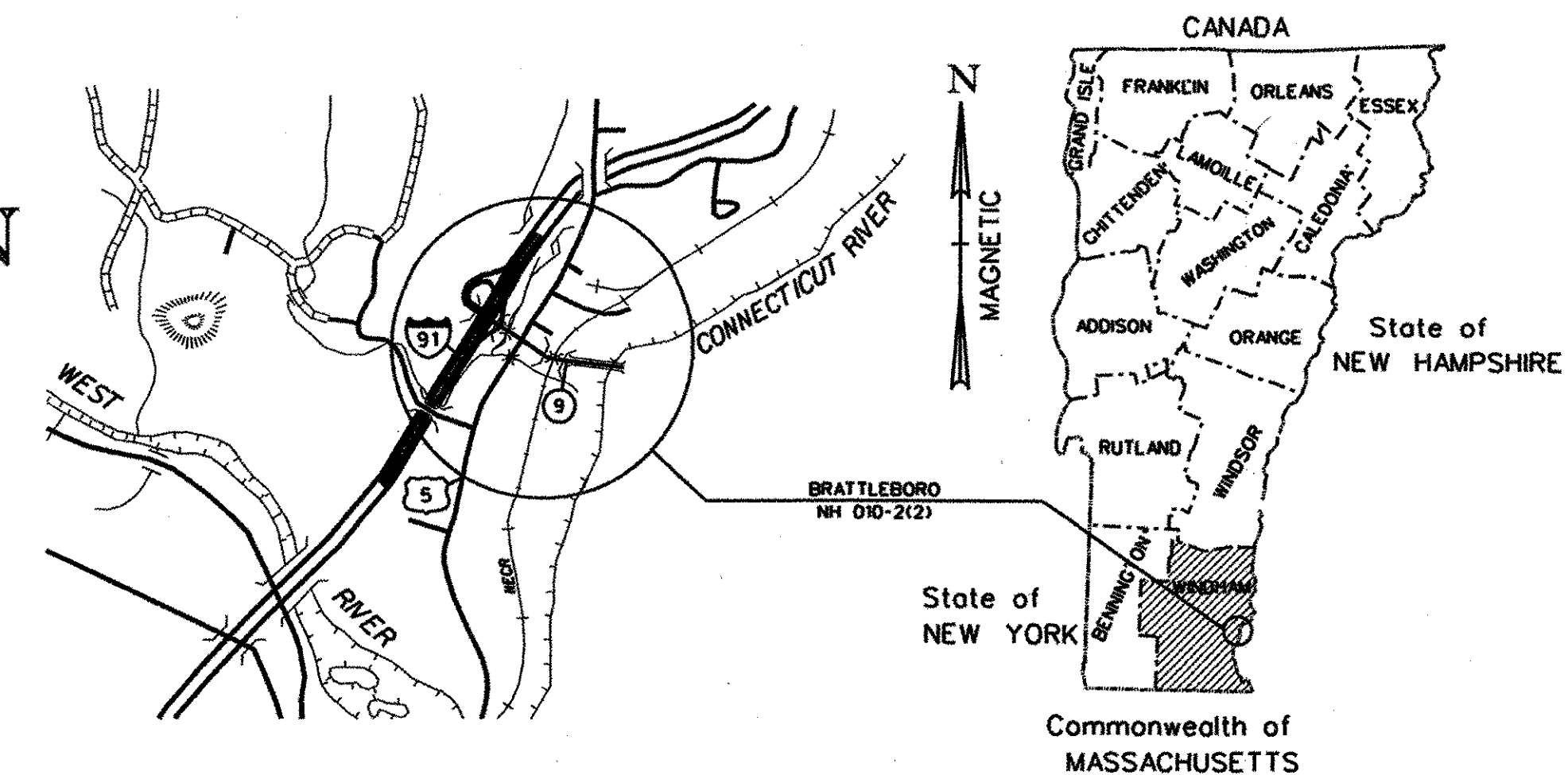


# STATE OF VERMONT AGENCY OF TRANSPORTATION



## PROPOSED IMPROVEMENT TOWN OF BRATTLEBORO COUNTY OF WINDHAM VT ROUTE 9 (PRINCIPAL ARTERIAL) RR BRIDGE #62.56



BEGINNING AT A POINT IN THE TOWN OF BRATTLEBORO APPROXIMATELY 85 METERS FROM THE INTERSECTION OF VT ROUTES 5 AND 9, EXTENDING EASTERLY ALONG ROUTE 9 TO THE CONNECTICUT RIVER A DISTANCE OF 270 METERS.

LENGTH OF ROADWAY = 270.00m  
 LENGTH OF RAILWAY = 678.6m  
 LENGTH OF VT ROUTE 9 BRIDGE = 32m  
 LENGTH OF SARGENT BROOK BRIDGE = 8m  
 LENGTH OF PROJECT = 973.53m

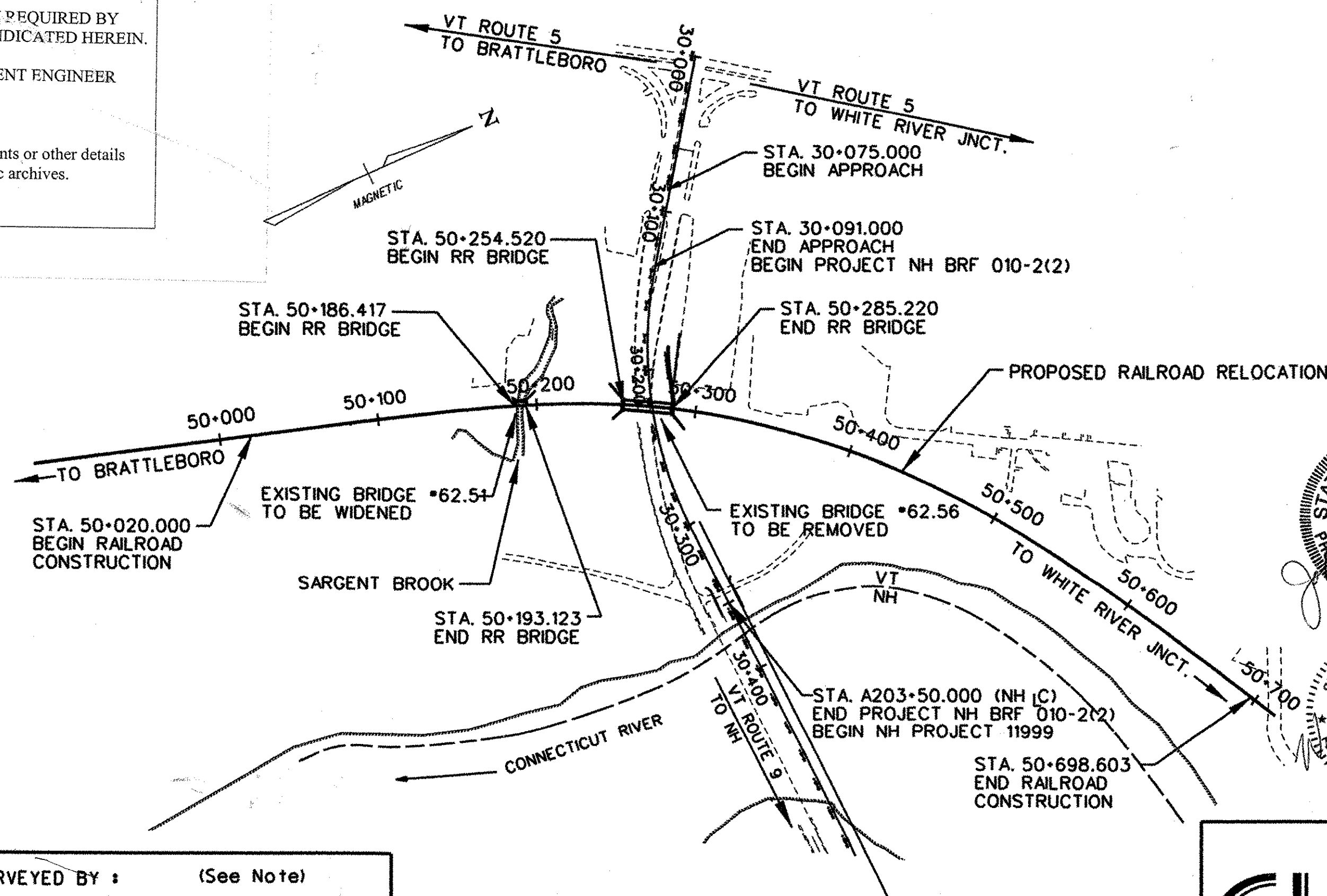
WORK TO BE PERFORMED UNDER THIS PROJECT CONSISTS OF REALIGNING AND WIDENING ROUTE 9, THE REPLACEMENT OF EXISTING RAILROAD BRIDGE #62.56 OVER VT ROUTE 9, THE WIDENING OF EXISTING RAILROAD BRIDGE #62.51 OVER SARGENT BROOK, AND THE ASSOCIATED SUBGRADE RAILWAY APPROACH WORK. RAILROAD SUBBALLAST, BALLAST, AND TRACK REHABILITATION AND CONSTRUCTION WILL BE PERFORMED BY OTHERS UNDER A RAILROAD FORCE ACCOUNT.

RECORD PLANS	
CONTRACTOR:	J. A. MCDONALD, INC. - LYNDON CTR., VT
RESIDENT ENGINEER:	DARREL BASSETT
CONSTRUCTION BEGAN:	MARCH 3, 2003
CONSTRUCTION COMPLETE:	NOVEMBER 8, 2004
RECORD PLANS BY:	D. BASSETT & E. FOSTER

I HEREBY CERTIFY THAT ALL THE CONSTRUCTION REQUIRED BY THIS SET OF DRAWINGS HAS BEEN ACCOMPLISHED AS INDICATED HEREIN.

BY *Darrel Bassett* RESIDENT ENGINEER  
 DATE April 3, 2006

NOTE: Any further information concerning final quantities, amounts or other details relative to this project may be found at Central Files in the electronic archives.

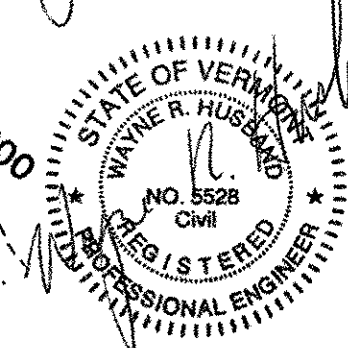
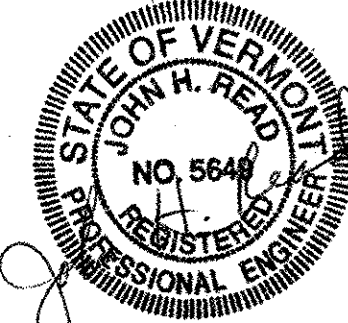


TRAFFIC DATA	
<b>VEHICLE:</b>	<b>RAILROAD:</b>
2000 ADT - 15,000	1998 ADT FREIGHT - 6 TRAINS
2020 ADT - 19,200	V - 64 KmH (40 MPH)
2020 DHV - 1,925	1998 ADT PASSENGER - 2 TRAINS
2020 ADTT - 1,555	Vexist. - 95 KmH (59 MPH)
2020 %T - 4%	Vdesign - 88 KmH (55 MPH)
POSTED SPEED - 40 KmH (25MPH)	
DESIGN SPEED - 60 KmH (35 MPH)	
20 yr 18-KIP ESAL'S - 13,836,000	
40 yr 18-KIP ESAL'S - 45,693,000	
<b>BITUMINOUS CONCRETE PAVEMENT SUPERPAVE MIXTURE DESIGN CRITERIA</b>	
DESIGN LANE / DESIGN FILE ESAL	8,301,600
DESIGN NUMBER OF GYRATIONS	75
PERFORMANCE GRADED ASPHALT BINDER	PC 70-28

CONVENTIONAL SYMBOLS	
COUNTY LINE	
TOWN LINE	
LIMITS OF ACCESS	
POINT OF ACCESS	
FENCE LINE	
STONE WALL	
TRAVELED WAY	
GUARD RAIL	
RAILROAD	
SURVEY LINE	
CULVERT	
POWER POLE	
TELEPHONE POLE	
TREES	
CONTROL OF ACCESS	
PROPERTY LINE	
R.O.W. TAKING LINE	
SLOPE RIGHTS	
TOP OF CUT	
TOE OF SLOPE	

SURVEYED BY :	(See Note)
SURVEYED DATE :	(See Note)
DATUM	
VERTICAL	NGVD 1929
HORIZONTAL	NAD 1983

SURVEY INFORMATION OBTAINED BY NHDOT, ELECTRONICALLY TRANSLATED FROM MOSS TO MICROSTATION, AND SUPPLEMENTED BY VTRANS ADDITIONAL SURVEY.



**GORDON, BUA & READ, INC.**  
 A DIVISION OF TRANSYSTEMS CORPORATION  
 34 SALEM STREET  
 READING, MASSACHUSETTS 01867

THESE PLANS ARE SUBJECT TO SUCH ENGINEERING CHANGES AS MAY BE REQUIRED BY THE FEDERAL HIGHWAY ADMINISTRATION OR THE DIRECTOR OF PROJECT DEVELOPMENT.  
 CONSTRUCTION IS TO BE CARRIED ON IN ACCORDANCE WITH THESE PLANS AND THE STANDARD SPECIFICATIONS FOR CONSTRUCTION DATED 2001, AS APPROVED BY THE FEDERAL HIGHWAY ADMINISTRATION ON JANUARY 4, 2001 FOR USE ON THIS PROJECT, INCLUDING ALL SUBSEQUENT REVISIONS AND SUCH REVISED SPECIFICATIONS AND SPECIAL PROVISIONS AS ARE INCORPORATED IN THESE PLANS.

**Metric**  
 UNLESS NOTED OTHERWISE  
 STATIONS ARE IN KILOMETERS  
 ELEVATIONS ARE IN METERS  
 DIMENSIONS ARE IN MILLIMETERS

DIRECTOR OF PROJECT DEVELOPMENT	
APPROVED	DATE <u>10/17/02</u>
PROJECT MANAGER :	A. PORTALUPI
PROJECT NAME :	BRATTLEBORO
PROJECT NUMBER :	NH 010-2(2)
SHEET 1 OF 145 SHEETS	