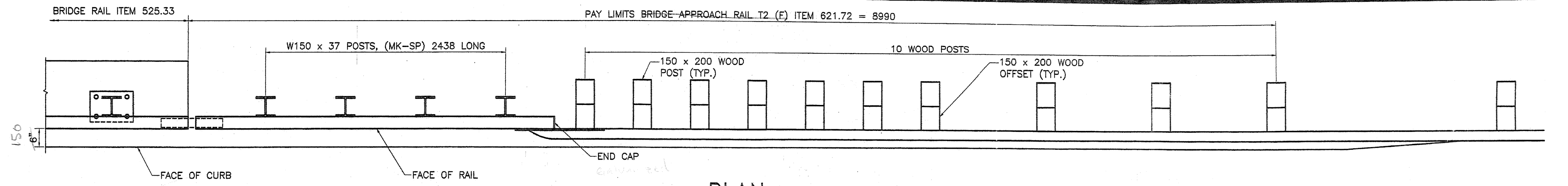
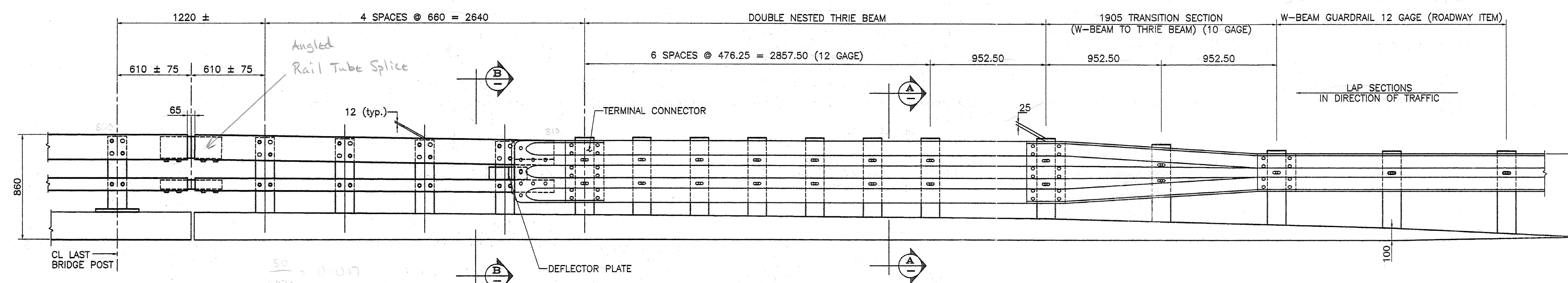


Guard Rail Approach Section, Galvanized NETC 2 Rail



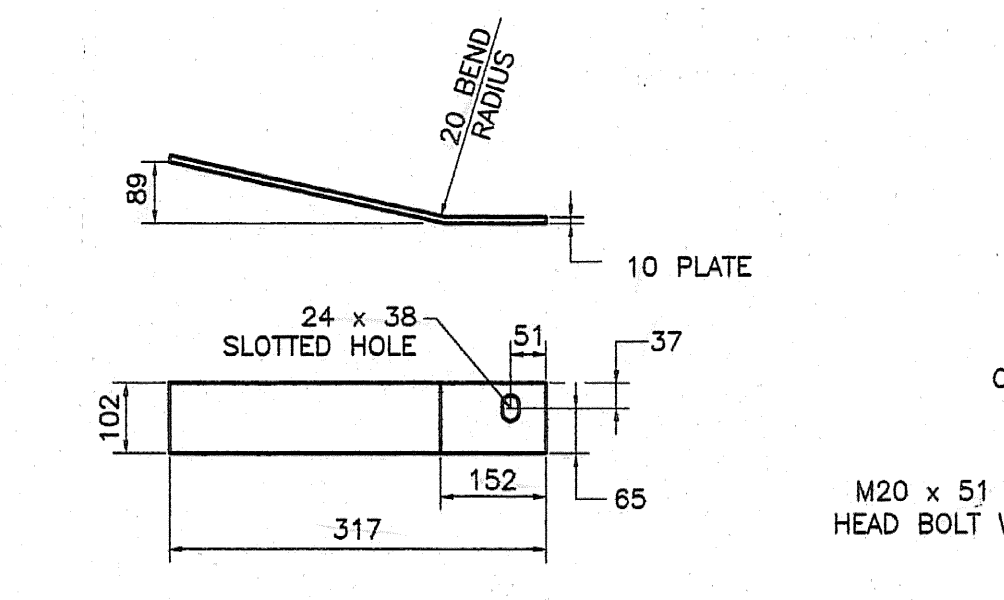
PLAN



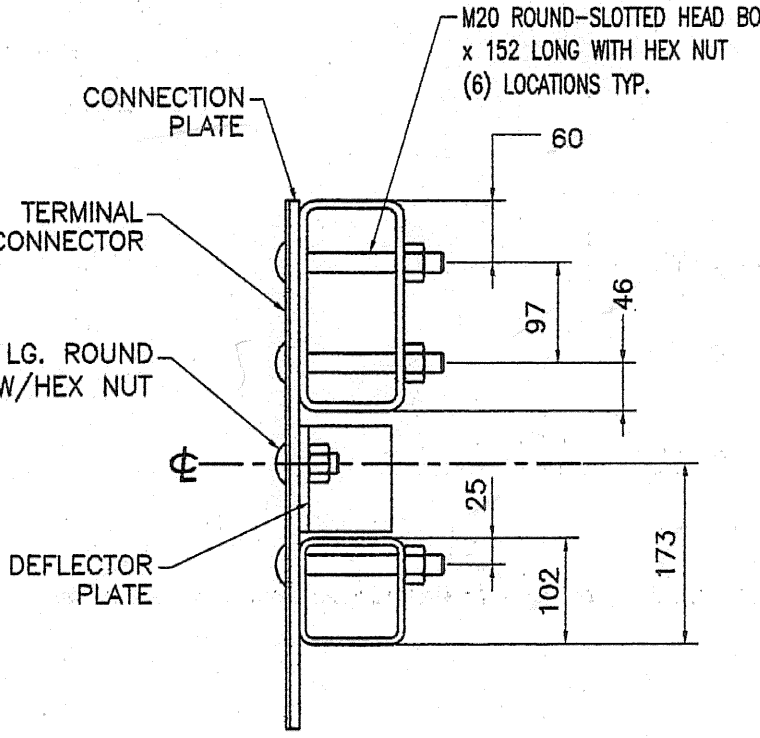
ELEVATION - APPROACH RAIL
4 LOCATIONS
(2) typ. AS SHOWN
(2) typ. OPPOSITE HAND

BILL OF MATERIAL (4 APPROACHES)					
MK.	Qty.	Description	Size/Shape	Length	Material
4		APPROACH RAIL TUBE	TS 203x102x8	2.963m	A500 Gr. B
4		APPROACH RAIL TUBE	TS 102x102x8	2.963m	A500 Gr. B
SP	16	STEEL POST	W150 x 37	2440	A570 Gr. 345
40		WOOD POST	152 x 203	2130	TIMBER
40		WOOD BLOCK	150 x 200	457	TIMBER
4		ANGLED EXP. SPLICE TUBE FOR TS 203x102	TUBE TS 178x76x10	508	A500 Gr. B
4		WELDED LOCK NUTS	M16	---	A563M
4		EXP. SPLICE TUBE FOR TS 102x102	TUBE TS 76x76x8	508	A500 Gr. B
4		WELDED LOCK NUTS	M16	---	A563M
4		TERMINAL CONNECTOR	10 Ga.	---	M180 B2
4		CONNECTION PLATE	10 x 508	686	A709M Gr. 250
4		END CAP FOR TS 203x102 RAIL TUBE	PLATE 5 x 102	204	A709M Gr. 250
4		END CAP FOR TS 102x102 RAIL TUBE	PLATE 5 x 102	102	A709M Gr. 250
2		DEFLECTOR PLATE (LEFT)	10x102	317	A709M Gr. 250
4		DEFLECTOR PLATE (RIGHT)	10x102	317	A709M Gr. 250
8		M20 x 51 LG. ROUND HEAD BOLT W/NUT			A307
4		THRIE TRANSITION PANEL	10 Ga.	2223m	M180 A2
4		THRIE BEAM	12 Ga.	3.810m	M180 A2
92		M20 x 152 ROUND HEAD BOLT W/NUT & ROUND WASHER			A325M
64		M16 x 508 LG. POST BOLT W/DBL RECESSED NUT, PLATE & ROUND WASHER			A307M
18		M16 x 457 LG. POST BOLT W/DBL RECESSED NUT, PLATE & ROUND WASHER			A307M
32		M16 x 44 LG. CAP SCREW W/WASHER			A307M
128		M16 x 32 LG. PANEL SPLICE BOLT W/DBL RECESSED NUT			A307M
32		20# x 12 LG. (SCH 40) SPACER PIPE			A53M

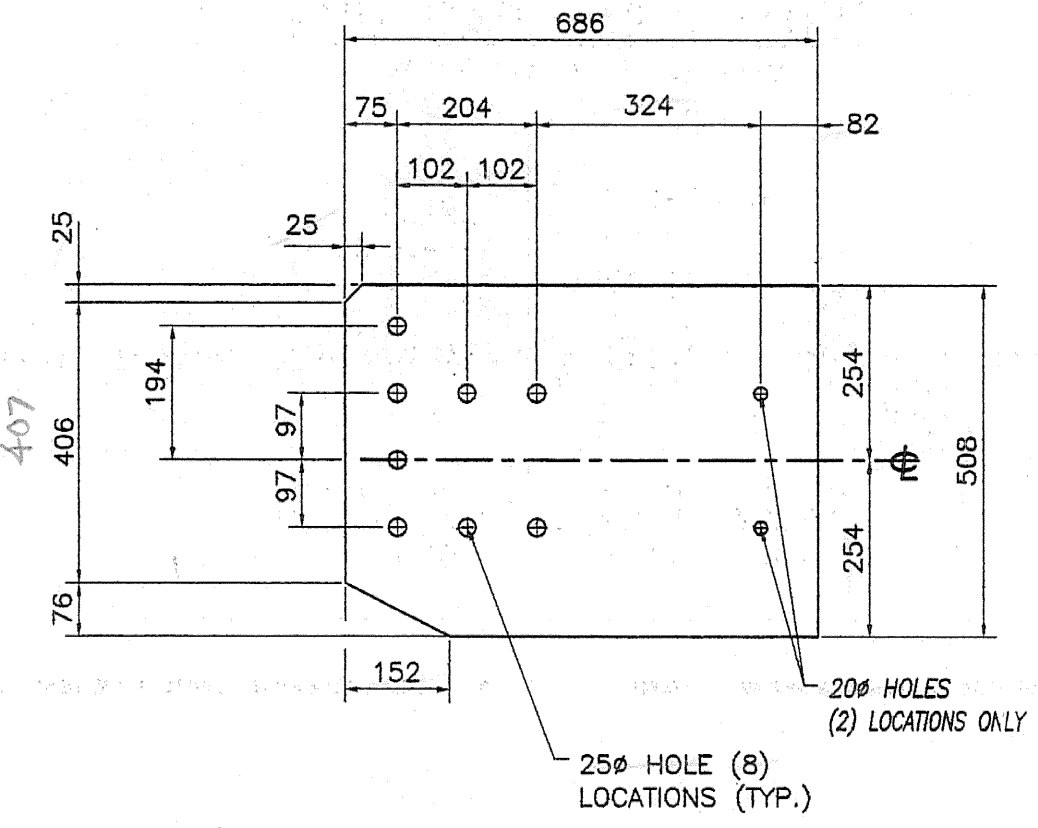
- NOTES:
1. ALL APPROACH RAIL SPLICES SHALL BE LAPPED IN THE DIRECTION OF TRAFFIC FLOW.
 2. ALL BRIDGE APPROACH RAIL MATERIALS, DIMENSION SIZES AND NOTES SHALL BE THE SAME AS THOSE OF THE BRIDGE RAIL, UNLESS OTHERWISE NOTED.
 3. WELD TOP SPLICE TUBE TO FIT BEND. USE COMPLETE PENETRATION WELD (B-U2).
 4. THRIE BEAM TERMINAL CONNECTOR AND THRIE BEAM TO W-BEAM TRANSITION SECTION SHALL CONFORM TO AASHTO M180.



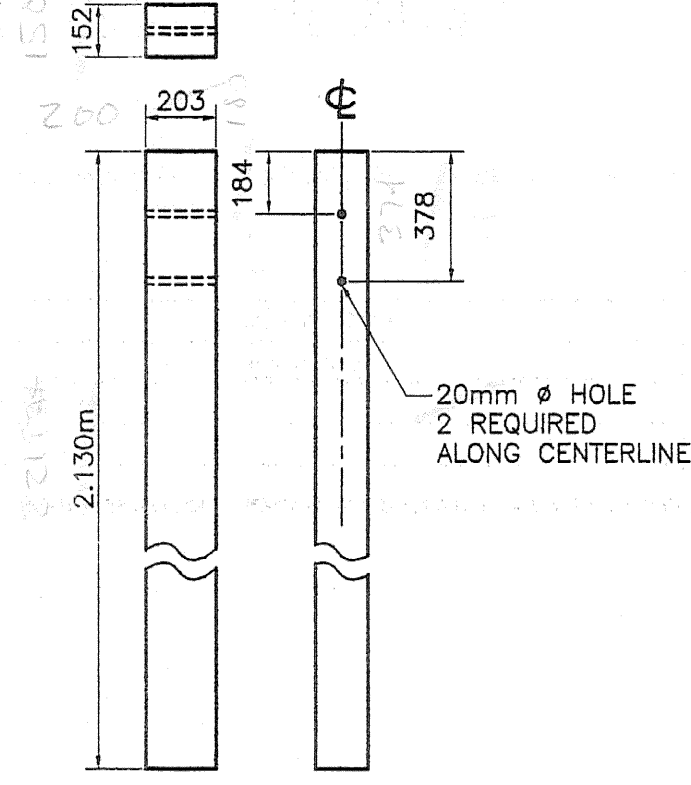
DEFLECTOR PLATE
10 x 102 PLATE (A709M Gr 250)



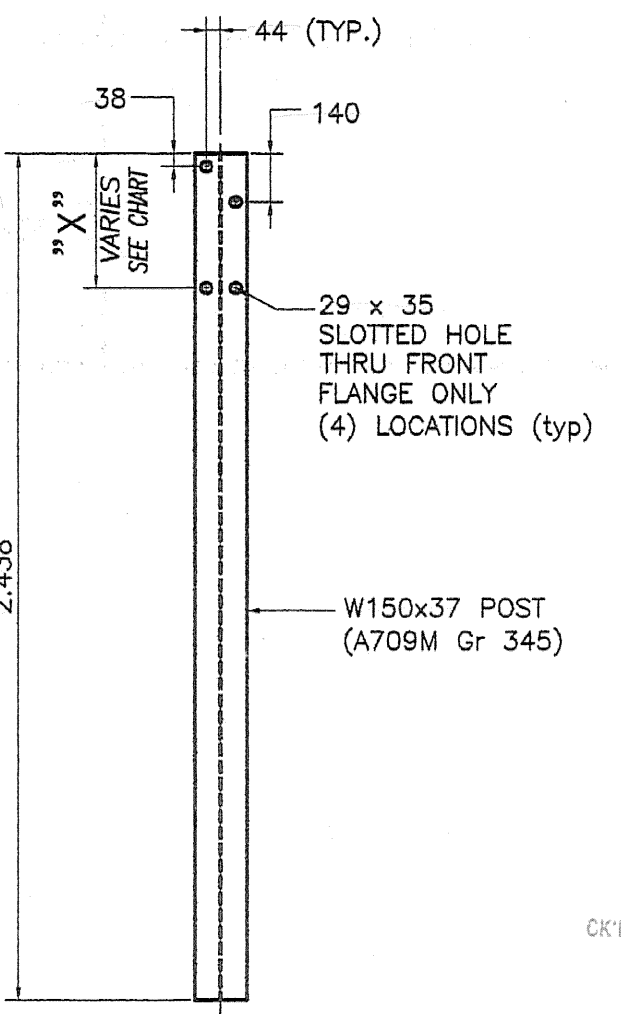
SECTION B-B



CONNECTION PLATE
10 x 508 x 686 (A709M gr 250)

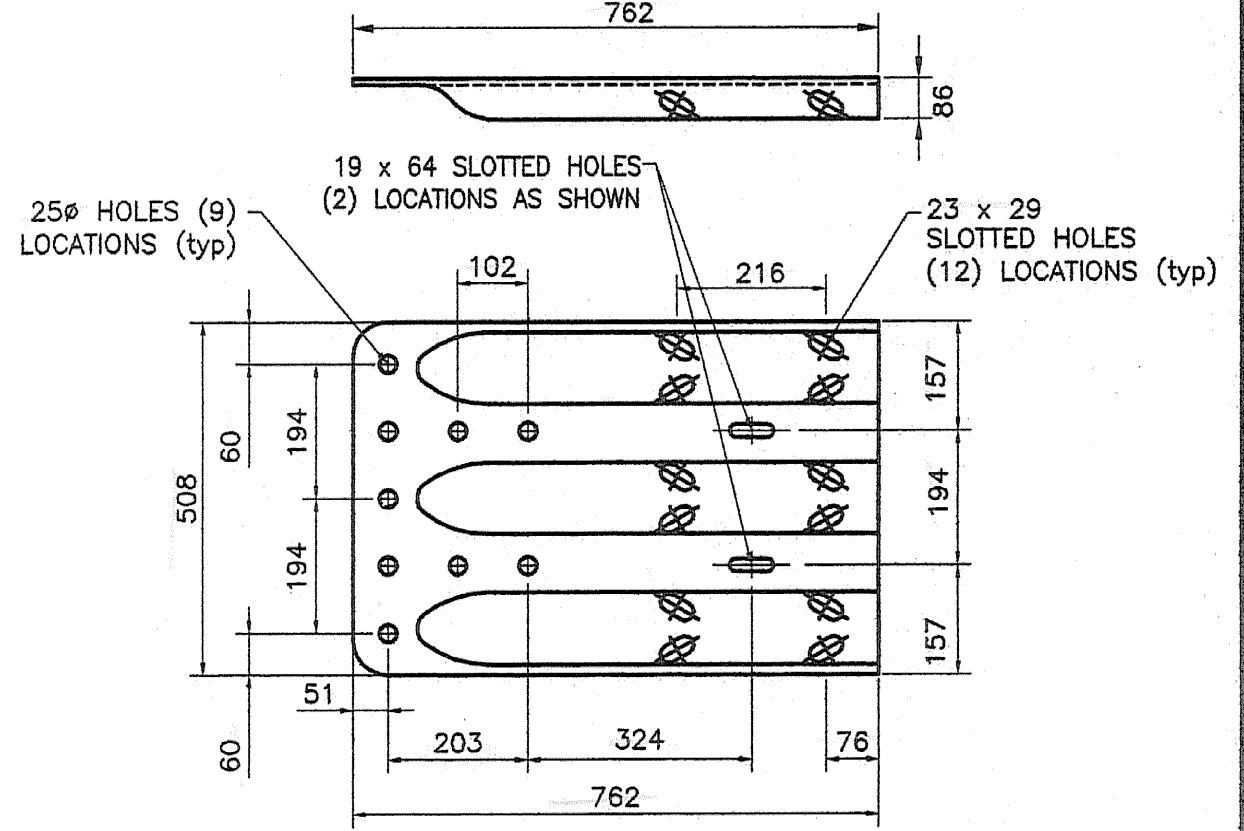


WOOD POST

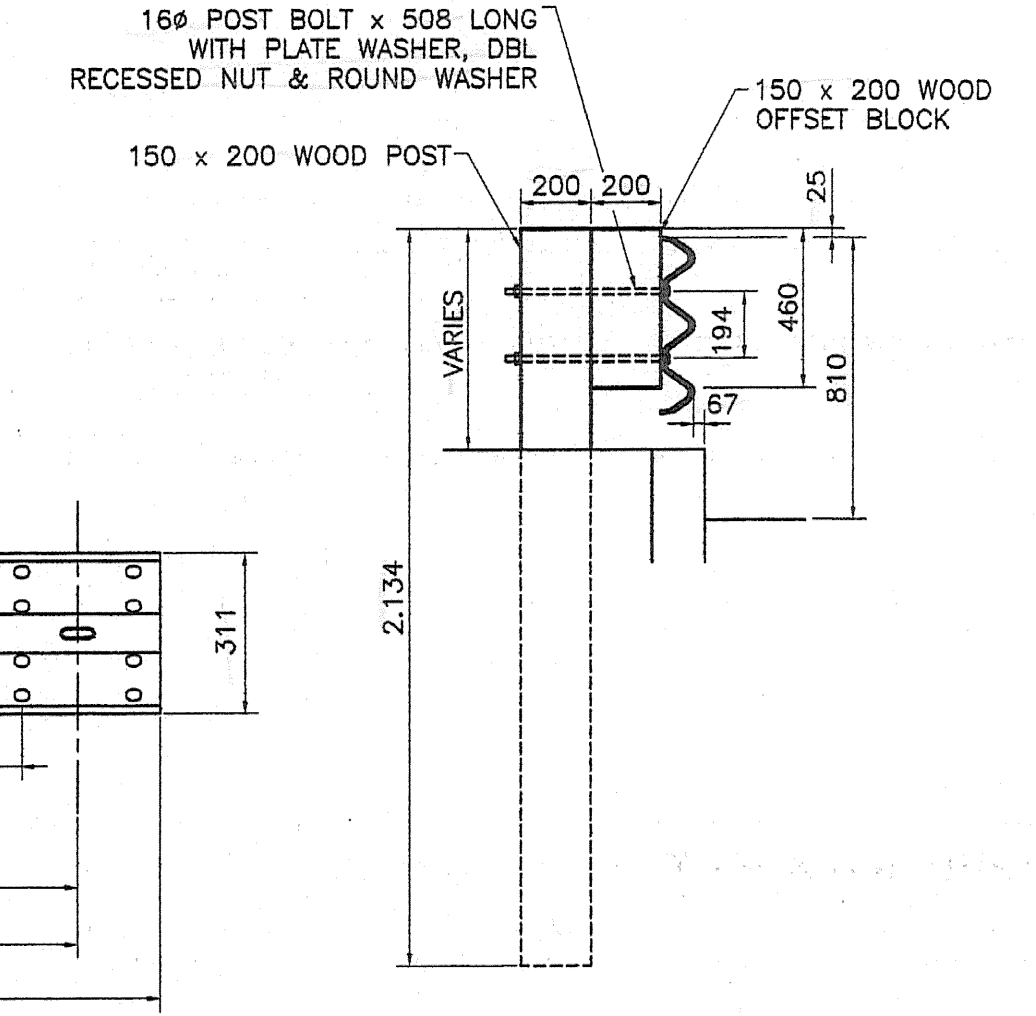
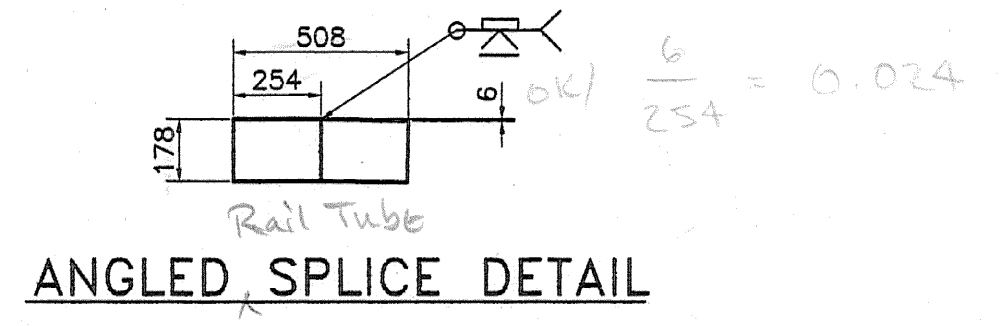


STEEL POST

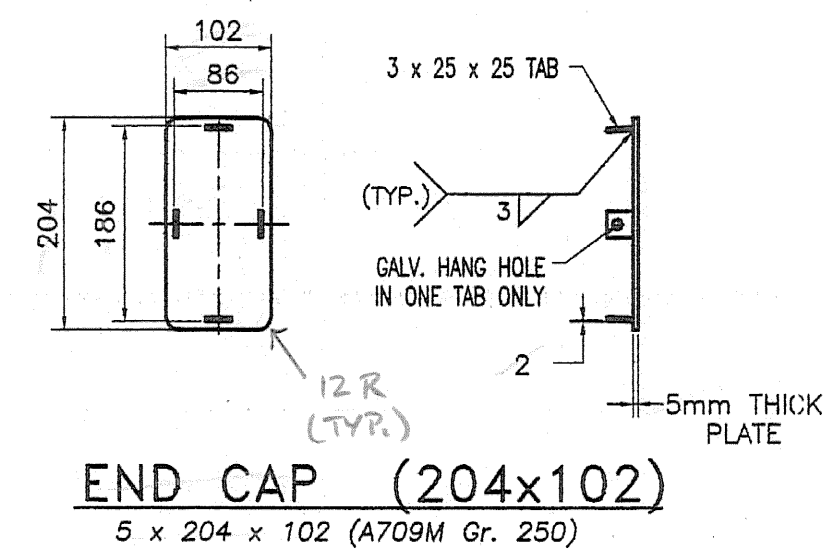
No.	" X "	393
#1	387	387
#2	381	381
#3	375	375
#4	368	368



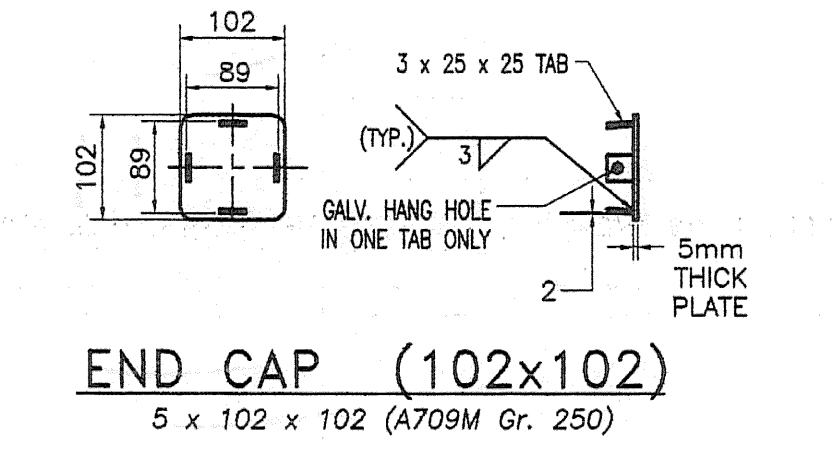
TERMINAL CONNECTOR
10 GAUGE (AASHTO M180 B2)



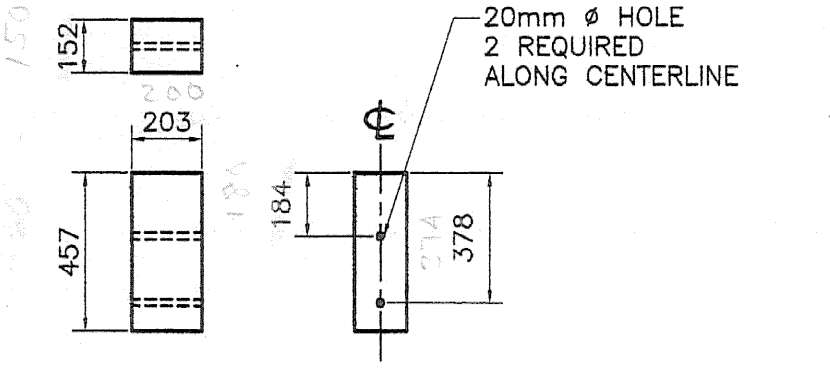
SECTION A-A



END CAP (204x102)
5 x 204 x 102 (A709M Gr. 250)



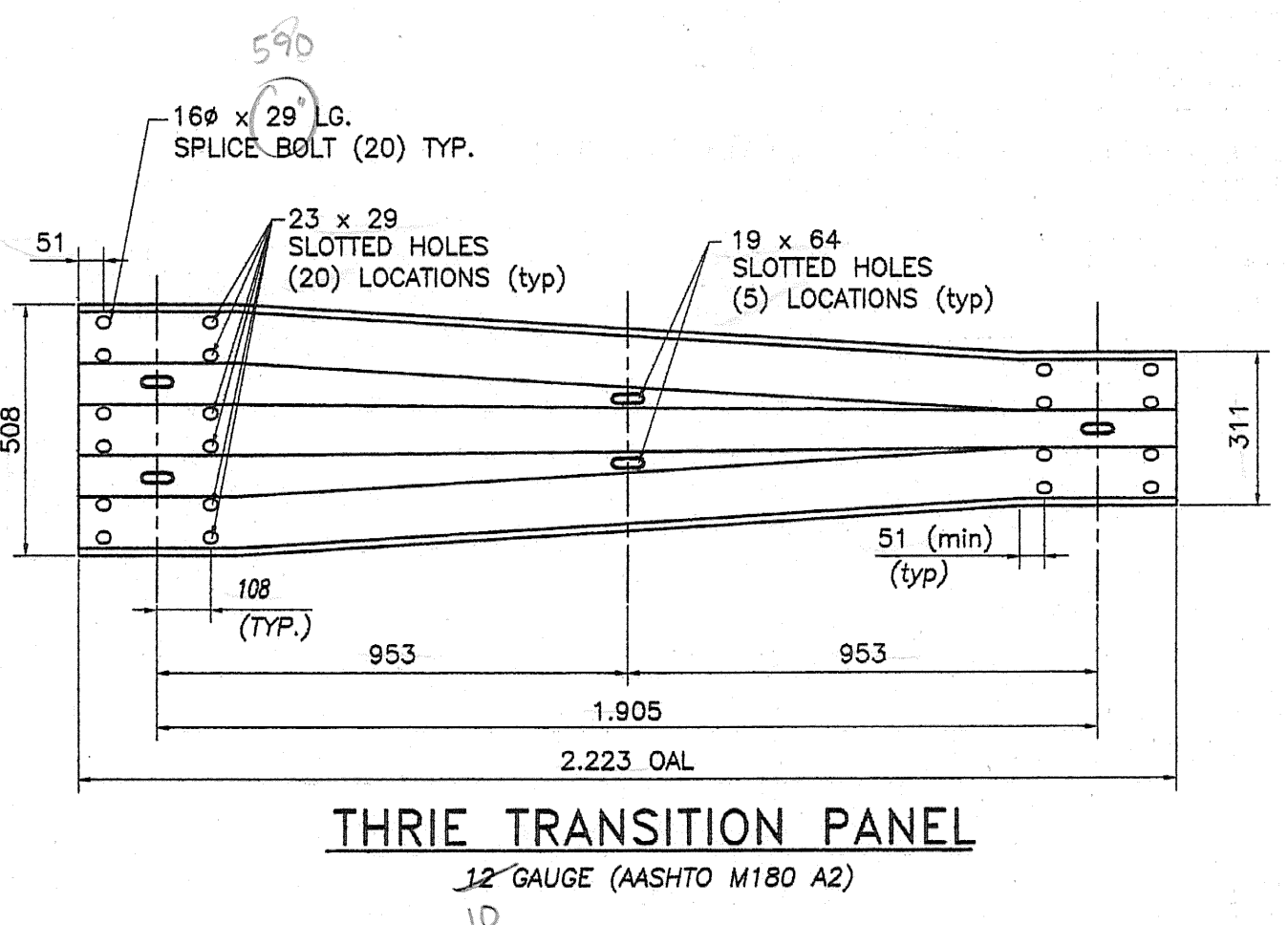
END CAP (102x102)
5 x 102 x 102 (A709M Gr. 250)



WOOD BLOCK DETAILS

NOTE: ALL DIMENSIONS SHOWN ARE IN MILLIMETERS (mm) UNLESS OTHERWISE NOTED.

RECEIVED
OK'D BY: THL
SEP 30 2008
RESUBMIT APPROVED As Noted
BY: RLW DATE 10-6-08



THRIE TRANSITION PANEL
12 GAUGE (AASHTO M180 A2)

No.	Remarks	Date
0	Initial submittal	

RECEIVED
OK'D BY: THL
OCT 02 2008
RESUBMIT APPROVED
BY: DATE

HIGHWAY SAFETY CORP.
GLASTONBURY, CT

ITEM 621.72 - BRIDGE APPROACH RAIL
BRIDGE #103 OVER EAST CREEK
RUTLAND COUNTY, VT
PROJECT NUMBER BR# 019-3(48)

DRAWN: M. Mohamed
CHECKED: P. Radice
DATE: 9/12/08
SCALE: NONE
HSC REFERENCE NO.: 1672
GENERAL CONTRACTOR: F.R. LAFAYETTE, INC.
SUB CONTRACTOR: F.R. LAFAYETTE, INC.

SIZE: D
REVISION: 0
SHEET NO.: 3 of 3