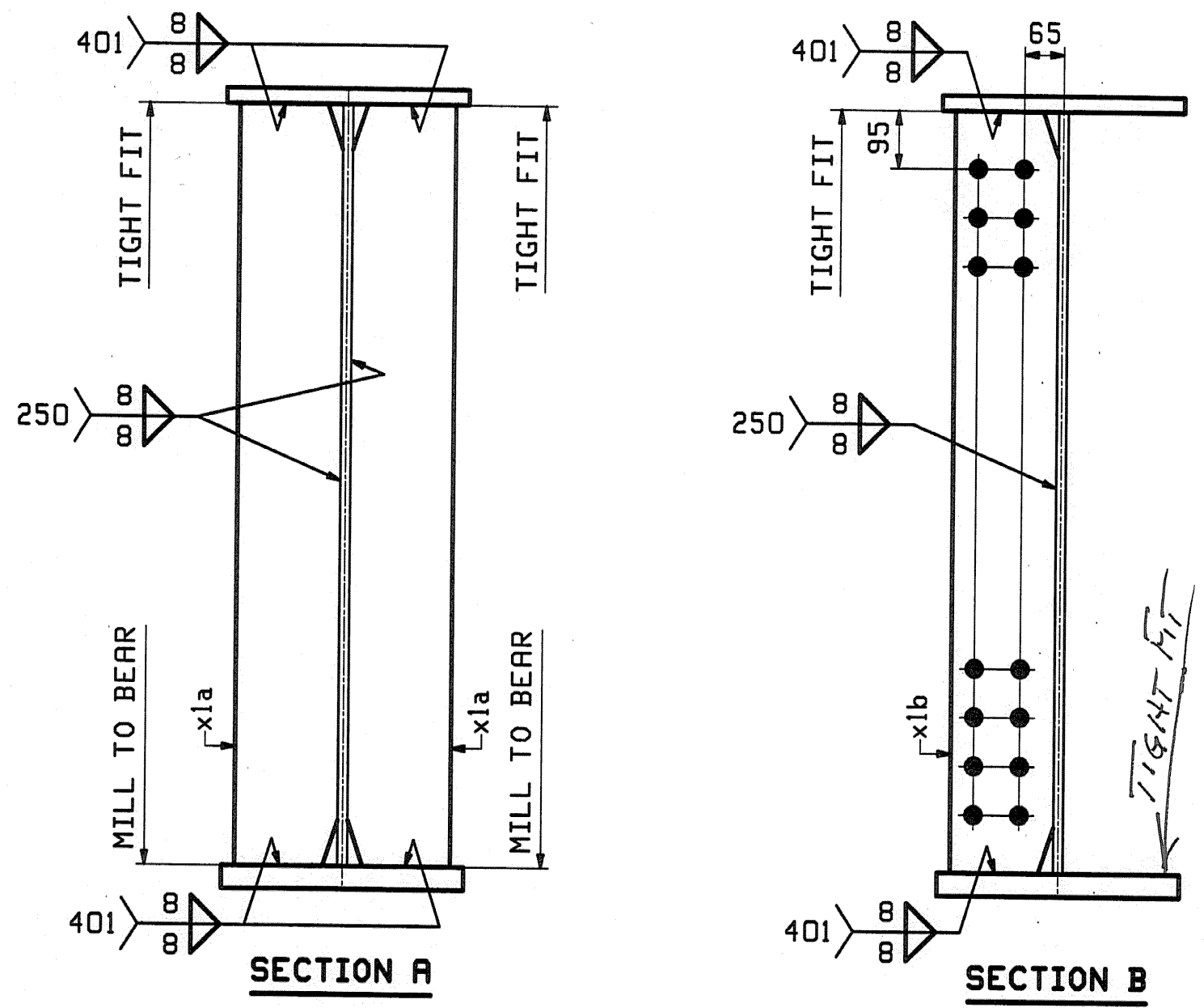
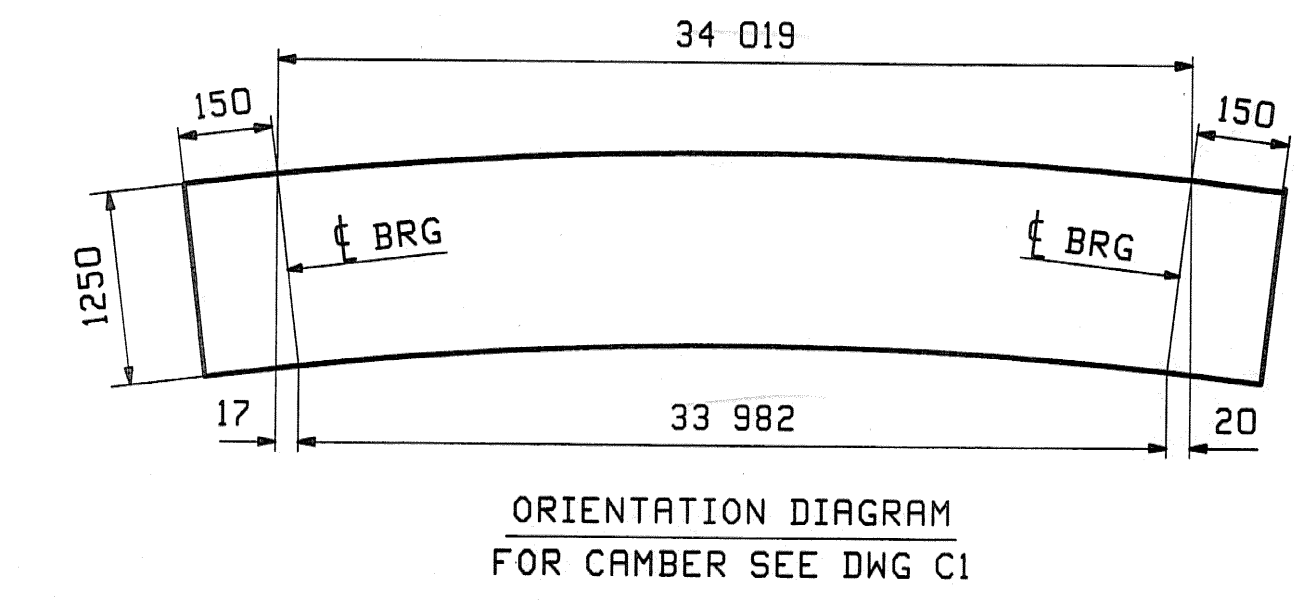


ONE - GIRDER - 1G1
 FOR GIRDER STANDARDS SEE DRAWINGS X1.
 FOR CAMBER & FLANGE DIAGRAMS SEE DRAWING C1.
 FOR GENERAL NOTES & WELD PROCEDURES SEE DRAWING GNI.
 H2-3 DENOTES MATERIAL SUBJECT TO CHARPY V-NOTCH TESTING.



PAGE LINE	MARK	QTY	MARK	MATERIAL	LENGTH		REMARKS	WT	PROCUREMENT NOTES
					m	aa			
	1G1	1		GIRDER				1429 kg 240 lbs	
1	G	1	wa	PL 16x1250	10	688	(M270M-345WT2)	(H2-3)	
1	E	1	wb	PL 16x1250	23	634	(M270M-345WT2)	(H2-3)	
1	L	1	ta	PL 25x400	11	583			
1	J	1	tb	PL 25x400	22	736			
1	C	1	ba	PL 38x400	11	583	(M270M-345WT2)	(H2-3)	
1	A	1	bb	PL 38x400	22	699	(M270M-345WT2)	(H2-3)	
2	B	4	x1a	PL 22x170	1	250	NIC		
2	C	4	x1b	PL 16x170	1	250			
2	D	1	x1c	PL 6x88	0	275			
2	D	1	x1d	PL 6x88	0	275			



RECEIVED
 CK'D BY *Rlw* CK'D BY _____
 JUL 0 1 2008
 RESUBMIT _____ APPROVED *As Noted*
 BY *Rlw* DATE 7/3/08

REV.	DATE	REMARKS	DWN	CHK	APVL	SHOP
0						5/20/08
MATERIAL:		SURFACE PREP. & PAINT:		HOLES:		SHOP BOLTS:
M270M-345W (UN) AS NOTED ON GNI		AS NOTED ON GNI		15 16Ø		NONE
DESCRIPTION: GIRDER - 1G1						
CASCO BAY STEEL STRUCTURES, INC. 75 SPRING HILL ROAD SACO, MAINE 04072 PHONE (207) 282-7360 FAX. (207) 282-1179						
STRUCTURE: US 7 over EAST CREEK BRIDGE NO 103 RUTLAND COUNTY, VERMONT				DRAWN: JTB	DATE: 04/19	
				CHKD: JF	DATE: 05/16	
LOCATION: TOWN OF RUTLAND				JOB NO. 368		DWG NO. 1
PROJ NO. BRF 019-3(48)						REV. 1
CUSTOMER: VERMONT ROT						

JTB The Day is 15/06/08 ECF 2008