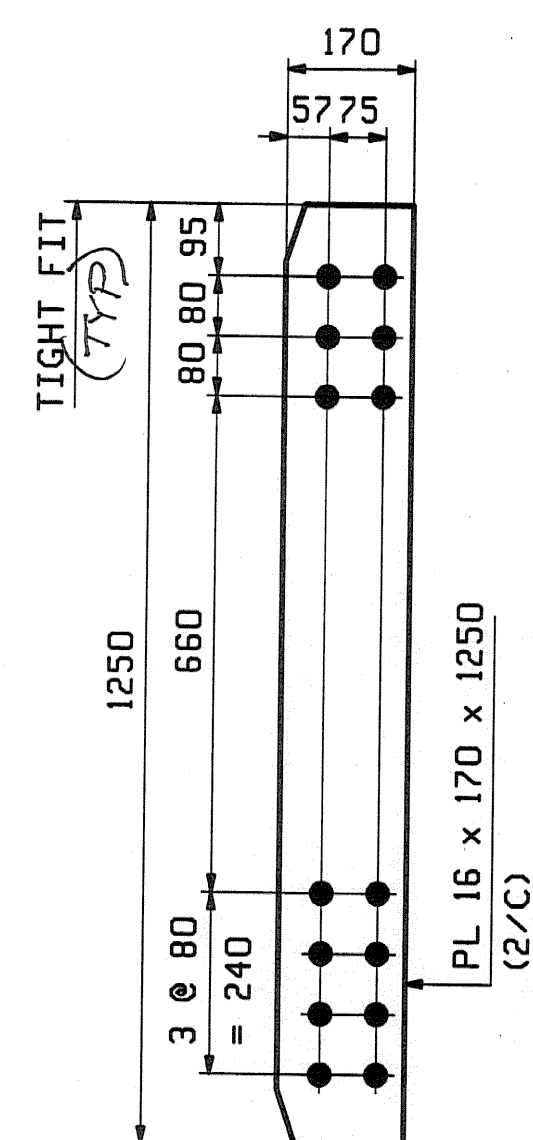
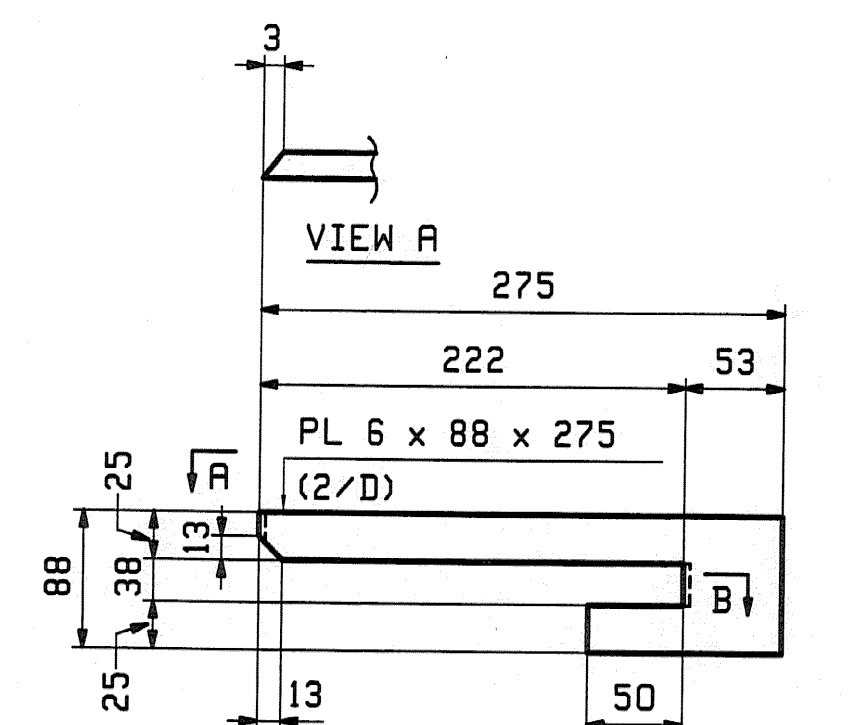


20 ~ x1a
BRG STIFF

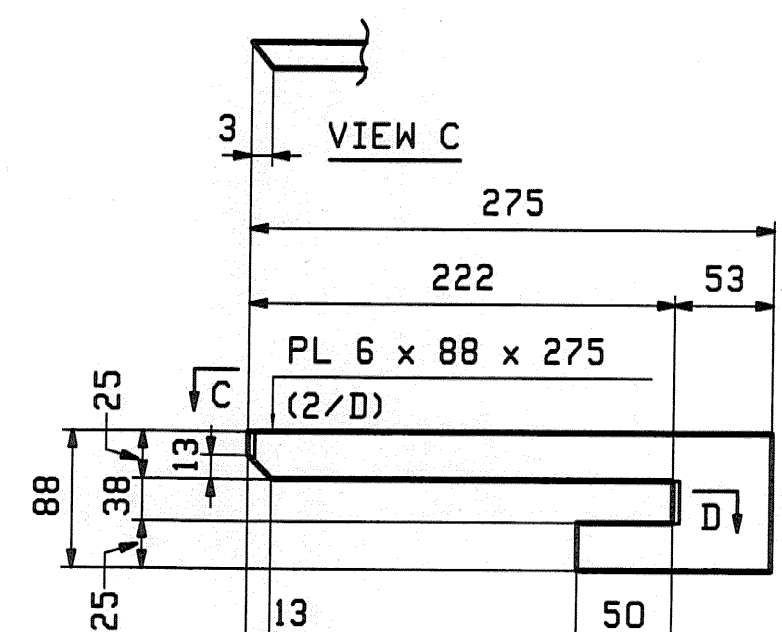


32 ~ x1b
INT. CF CONN.



2 ~ x1c

SECTION B



2 ~ x1d

SECTION D

RECEIVED
 CK'D BY *RLW* OK'D BY _____
 JUL 01 2008
 RESUBMIT _____ APPROVED _____
 BY *RLW* DATE 7/3/08

NOTES:
 ALL MATERIAL SHALL BE M270M-345W.
 ALL BOLT HOLES SHALL BE $\frac{15}{16}$ " FOR $\frac{3}{8}$ " HSB.
 FOR GENERAL NOTES SEE DRAWING GNI.

REV.	DATE	REMARKS	DWN	CHK	APVL	SHOP
0					<i>5/20/08</i>	
MATERIAL:		SURFACE PREP. & PAINT:		HOLES:		SHOP BOLTS:
M270M-345W		AS NOTED ON GNI		15 16"		NONE
DESCRIPTION: GIRDER STANDARD DETAILS						
CASCO BAY STEEL STRUCTURES, INC. 75 SPRING HILL ROAD SACO, MAINE 04072 PHONE (207) 282-7360 FAX. (207) 282-1179						
STRUCTURE: US 7 over EAST CREEK BRIDGE NO 103 RUTLAND COUNTY, VERMONT				DRAWN: JTB CHKD: JF	DATE: 04/19 DATE: 05/16	
LOCATION: TOWN OF RUTLAND				JOB NO.	DWG NO.	
PROJ NO. BRF 019-3(48)				368	X1	
CUSTOMER: VERMONT AOT					REV. Δ	

JTB Sun May 20 16:33:32 EDT 2008 -user: jtb/c2m/x1 Rev 0