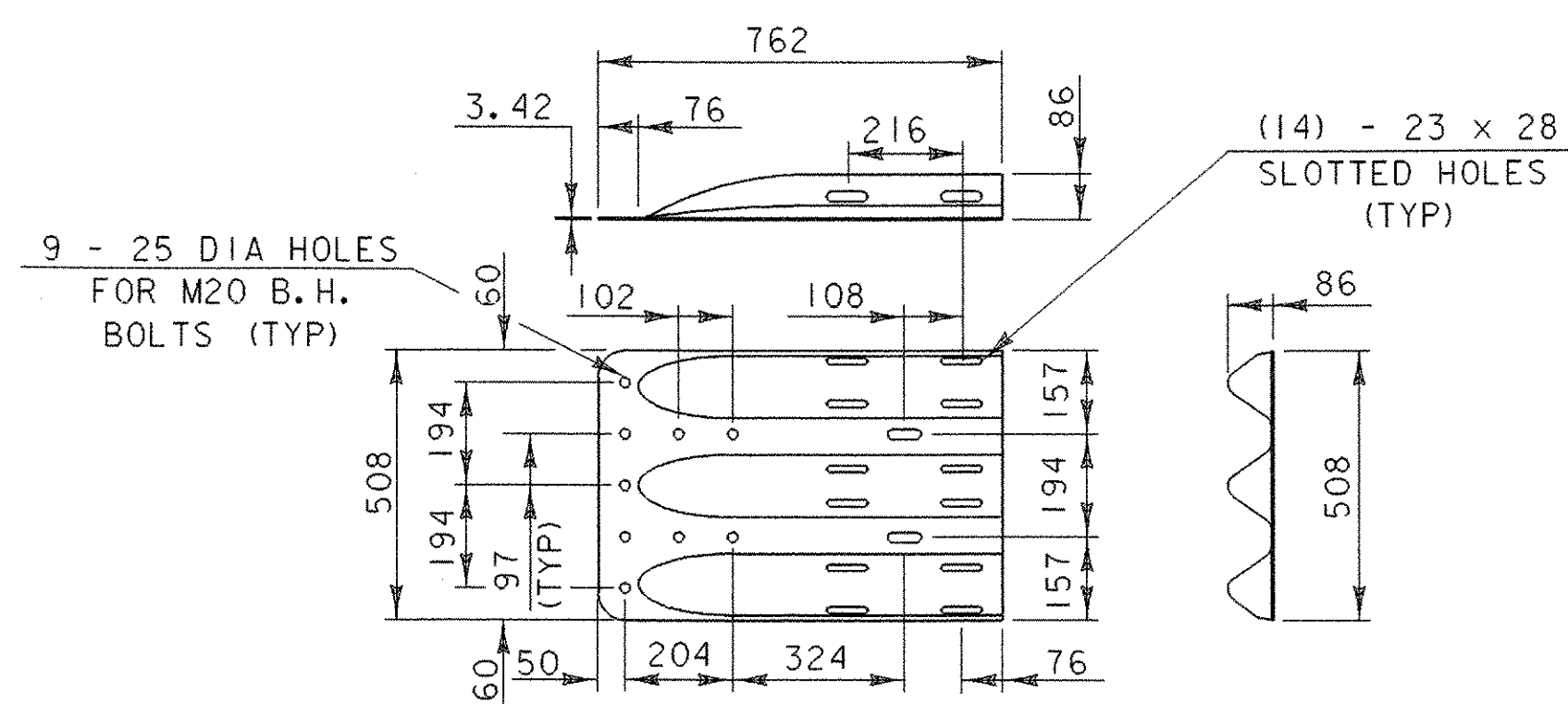
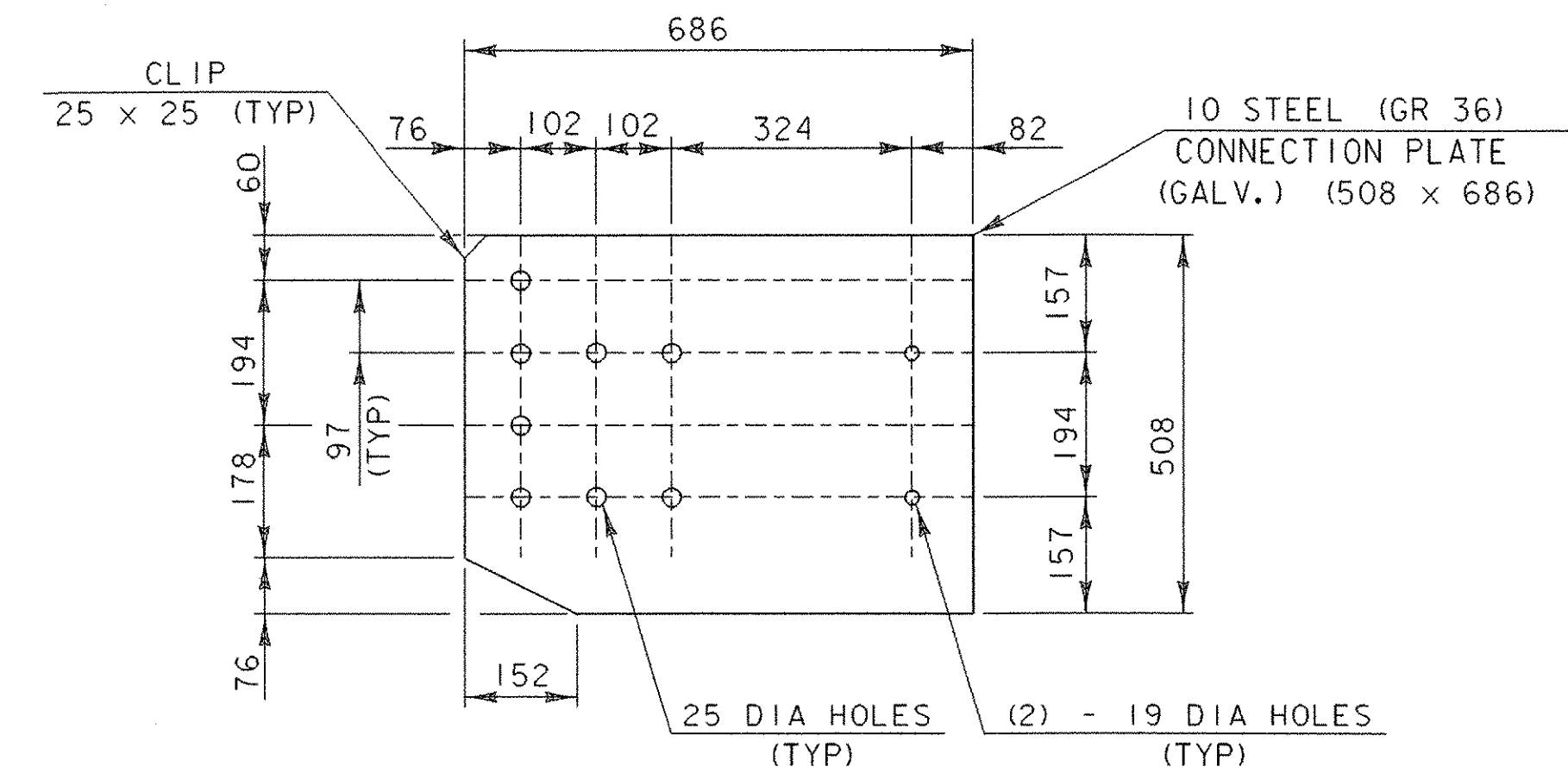


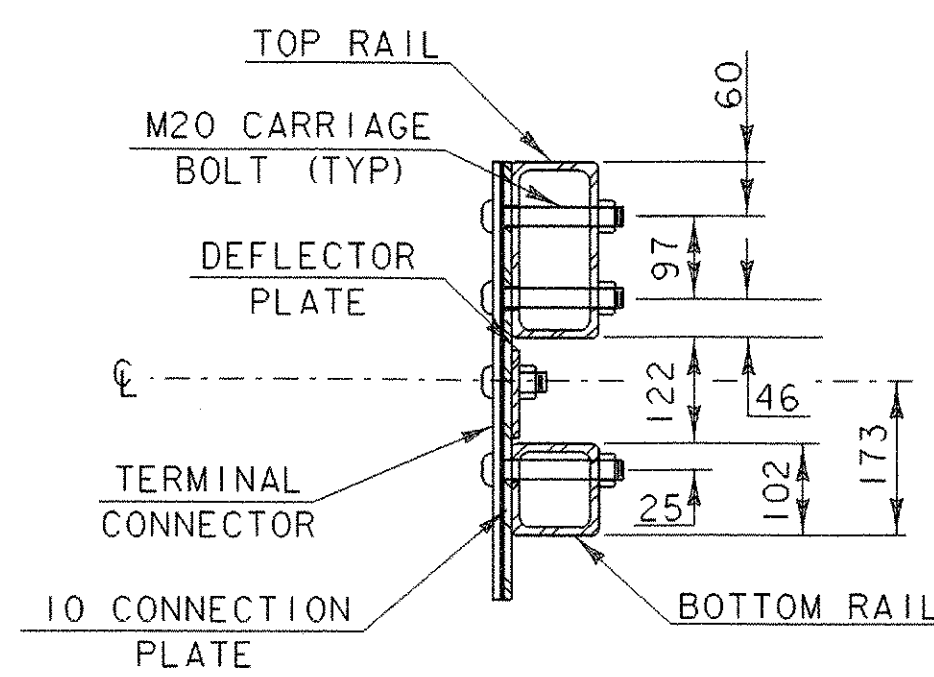
**WOOD POST-RAIL ASSEMBLY**



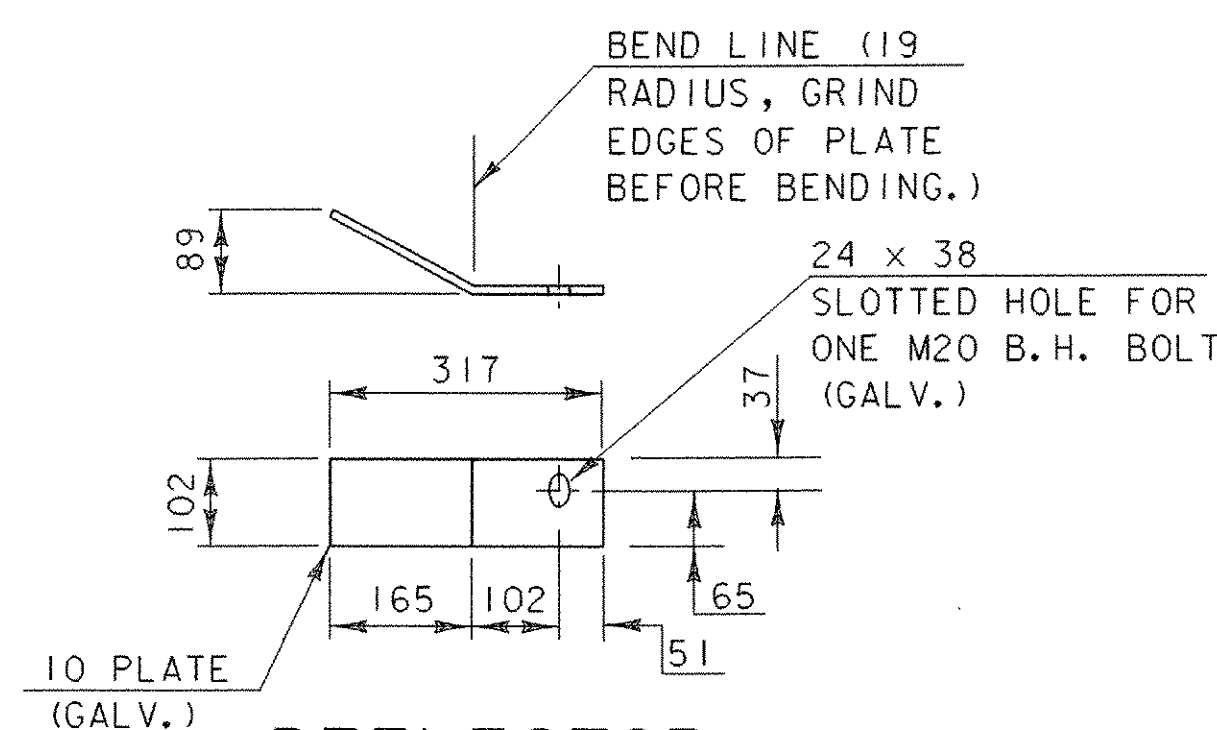
**THRIE-BEAM TERMINAL CONNECTOR (HM-TF-13/RE-67)**



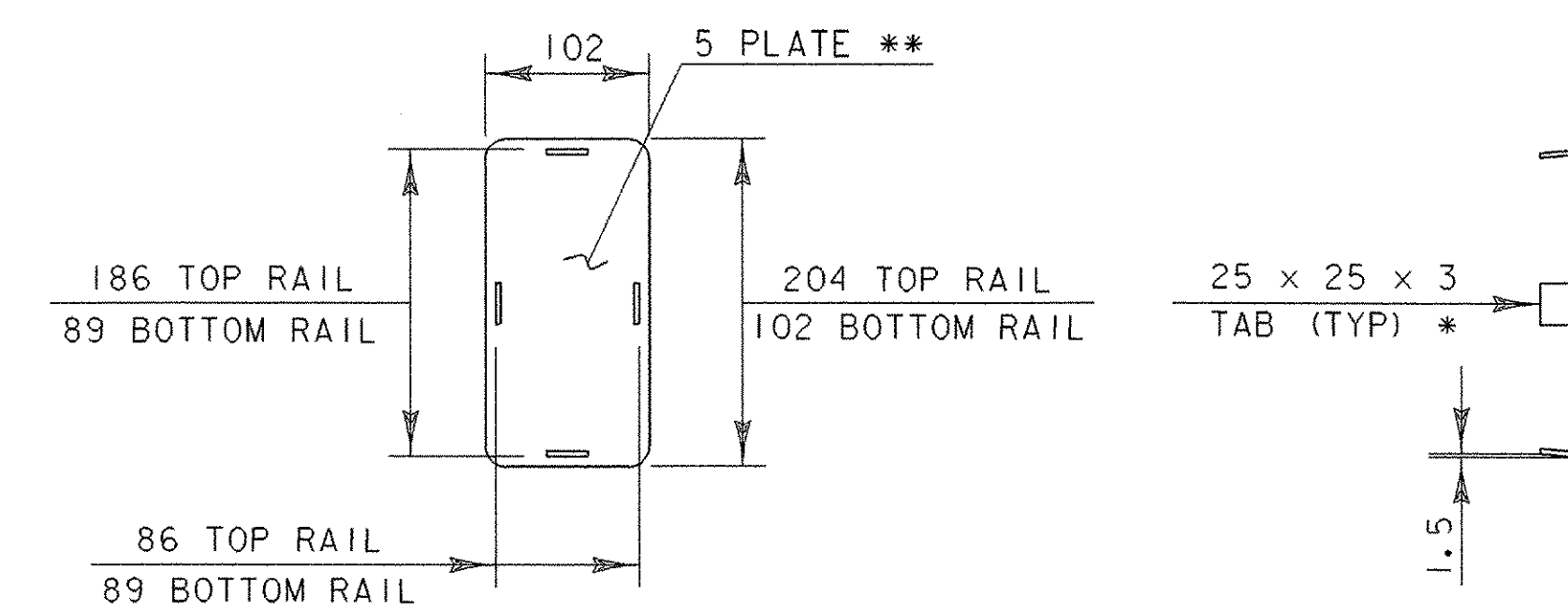
**CONNECTION PLATE**



**SECTION C-C (CONNECTION PLATE)**

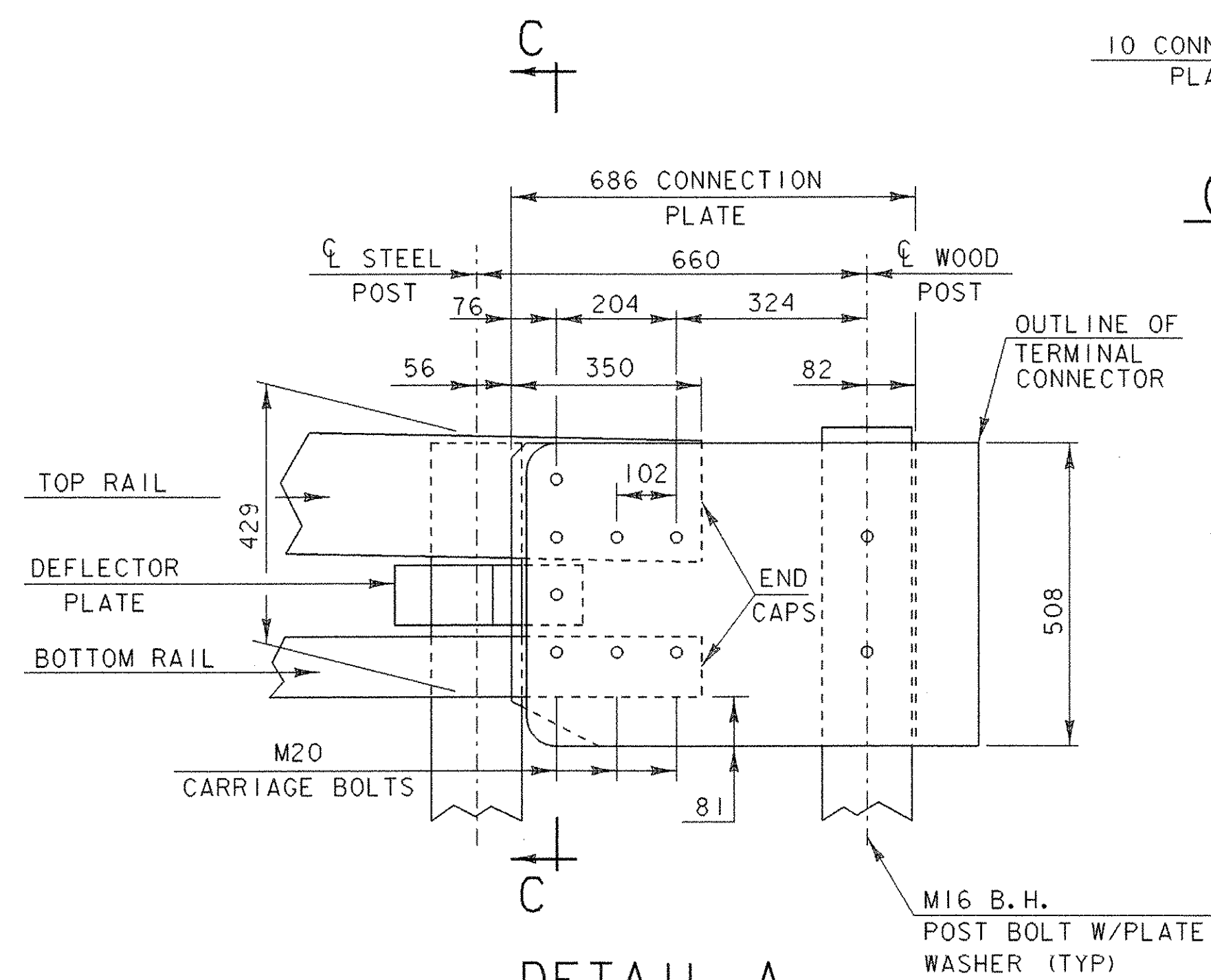


**DEFLECTOR PLATE DETAIL**

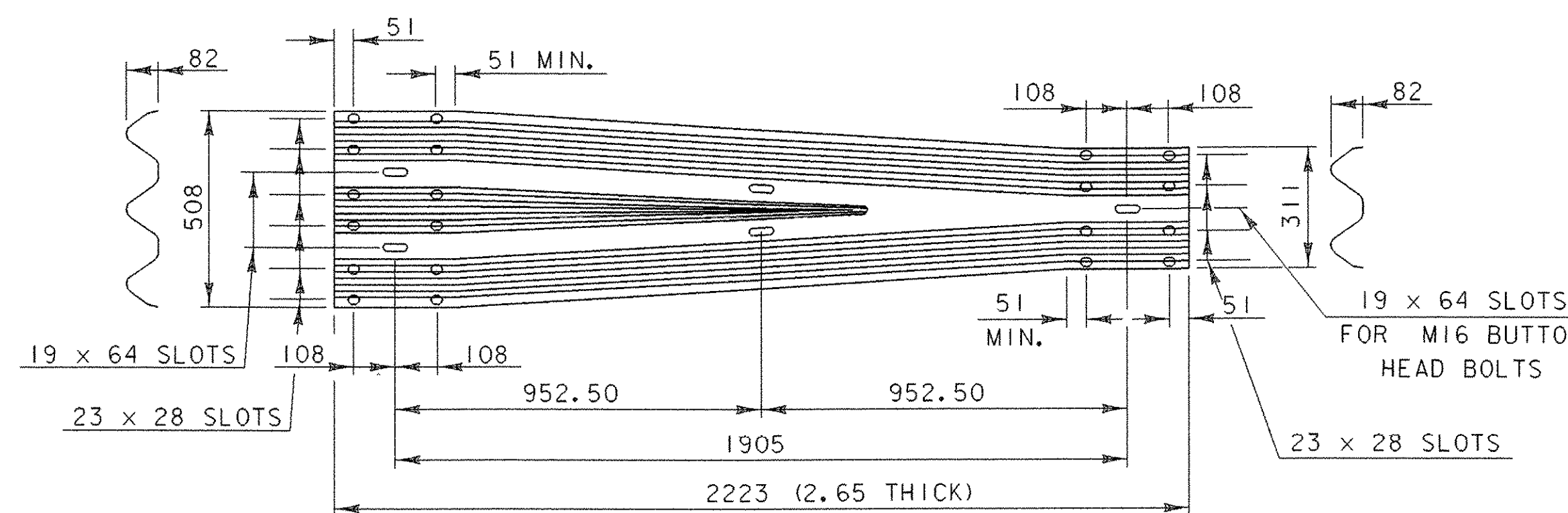


**END CAP DETAIL**

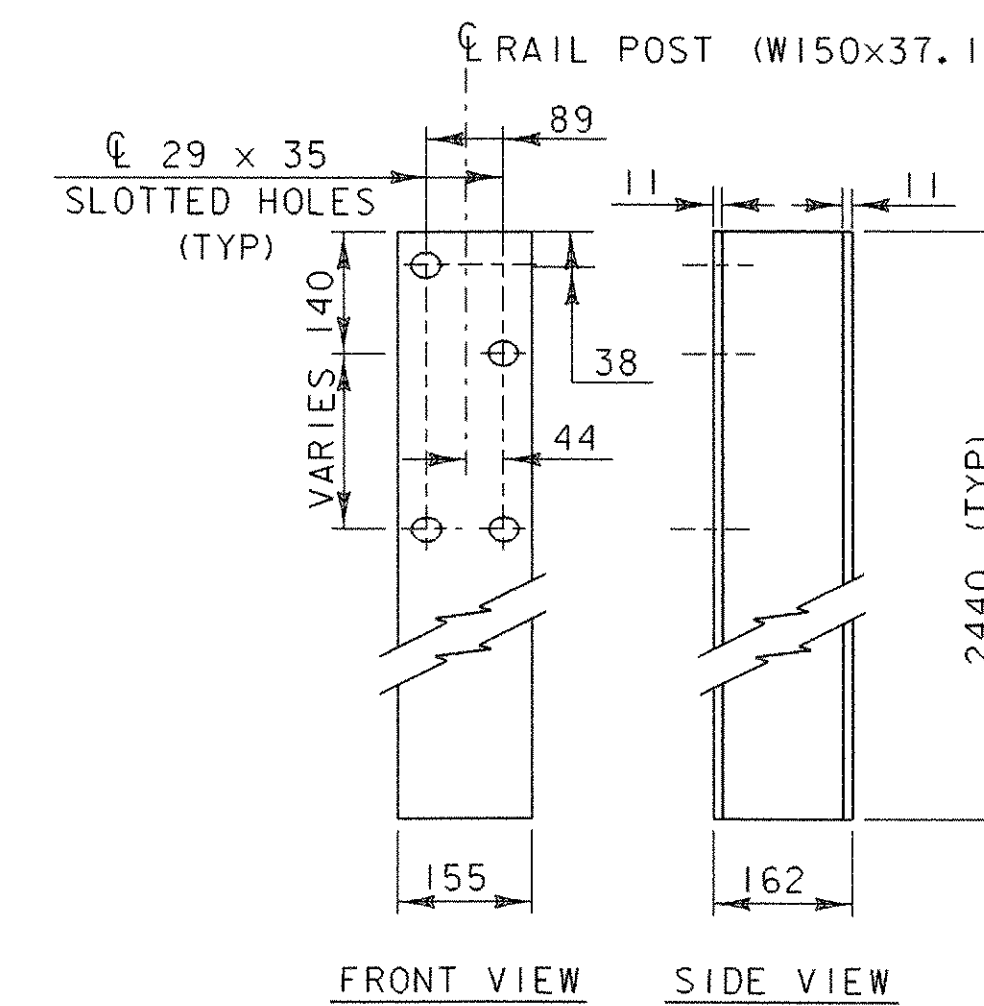
- \* WELD TABS TO END CAP PLATE IN TAPERED POSITION SO CAP CAN BE JAMMED INTO END OF RAIL TUBE.
- \*\* ROUND CORNERS 12 RADIUS (TYP)



**DETAIL A**



**THRIE-BEAM TO STD SB TRANSITION SECTION (HM-TF-13/RE-69)**



**RAIL POST**

**BR3M  
BRIDGE RAILING, GALVANIZED N.E.T.C. 2 RAIL  
THRIE BEAM GUARDRAIL APPROACH RAIL**

**BRIDGE RAILING  
DETAIL SHEET BR3M**

PROJECT NAME: RUTLAND TOWN	PLOT DATE: 11-MAR-2008
PROJECT NUMBER: BRF 019-3(48)	DRAWN BY: VTRANS
FILE NAME: sb172br3.1	CHECKED BY: T. Lackey
PROJECT LEADER: R. Whitcomb	SHEET 60 OF 75
DESIGNED BY: VTRANS	
95b172/str/sb172br.dgn	