

GPS CONTROL POINTS

HVCTRL # 1

STANDARD DISK STAMPED

RP *

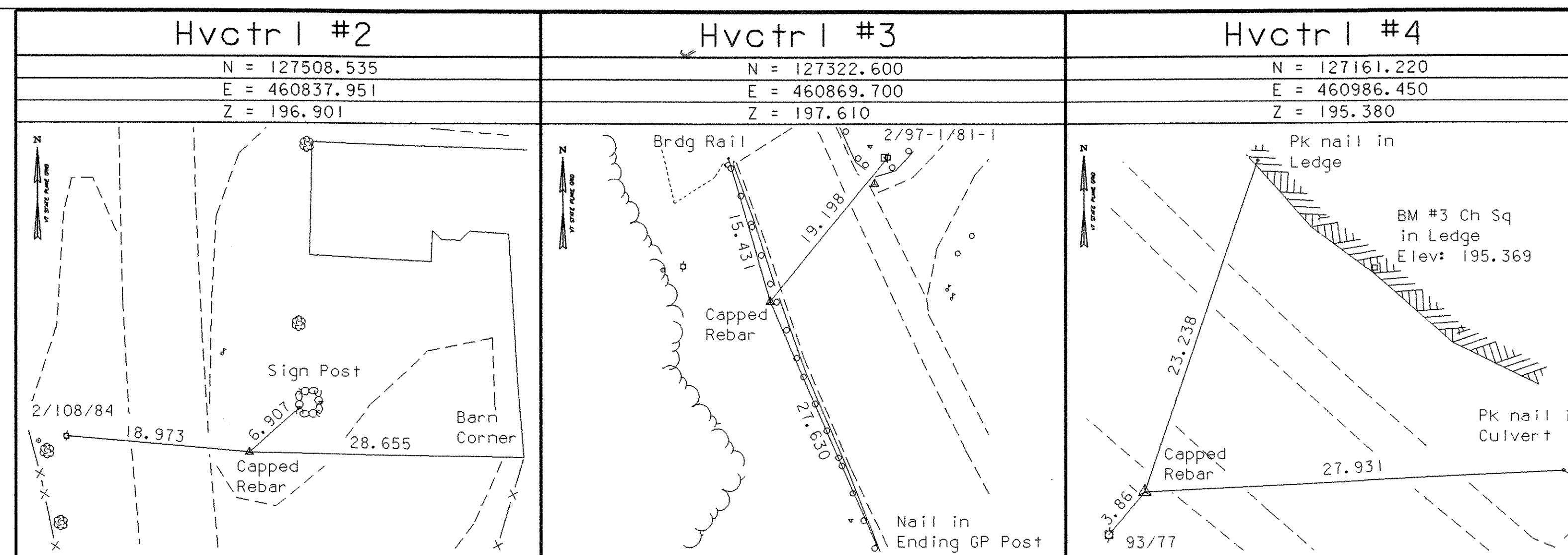
N = 128042.974
E = 460815.963
ELEV. = 200.345

To reach from the junction of US route 7 and US route 4 (Woodstock) in Rutland proceed north on route 7 for 3.1 mi (5.0 km) to a rock outcrop and the station on the right (east).

Station is 35.36m (116.01 ft) northwest of the northwest corner of a 2.5 story house, 15 m (49.2 ft) southwest of a utility pole # 114B/90B, 10 m (32.8 ft) northeast of utility pole # 114/90A and a fiberglass witness post, 6.8m (22.3 ft) east of and 1 m (3.3 ft) higher than the centerline of route 7.

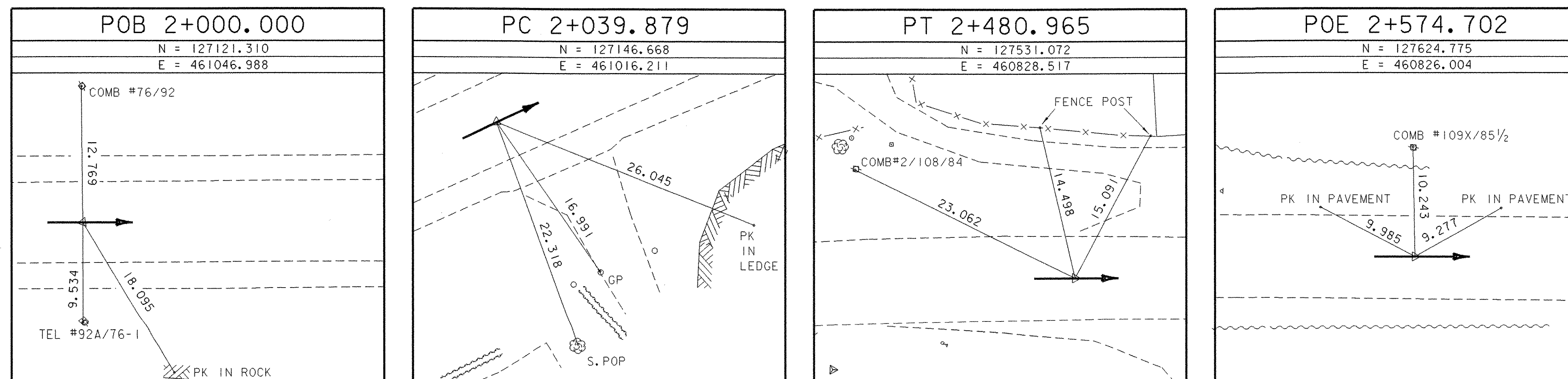
* DESCRIPTION PROVIDED BY VERMONT AGENCY OF TRANSPORTATION GEODETIC SURVEY UNIT

TRAVERSE TIES



* MAIN TRAVERSE COMPLETED 7/28/95 by L. Orvis P.C. and R. Bullock

ALIGNMENT TIES



* ALIGNMENT COMPLETED: DECEMBER 18, 2002 BY: L.ORVIS PC. & J.HULETT

SURVEY TIES

DATUM	
VERTICAL	NAVD 88
HORIZONTAL	NAD 83/92
ADJUSTMENT	Least Sq

PROJECT NAME:	Rutland Town	PLOT DATE:	11-MAR-2008
PROJECT NUMBER:	BRF 019-3(48)	DRAWN BY:	R. Bullock
FILE NAME:	sb172su5.i	CHECKED BY:	P.HODGE
PROJECT LEADER:	R. WHITCOMB	SHEET	19 OF 75
DESIGNED BY:	T. LACKEY		
95b172/s tr /sb172sur.dgn			