

CONSTRUCT PAVED DRIVE APRON  
2+200.8 LT.

REMOVAL AND DISPOSAL OF GUARDRAIL  
2+241.6 LT. - 2+260.0 LT.

MANUFACTURED TERMINAL SECTION, TANGENT  
2+215.0 LT. - 2+230.2 LT.

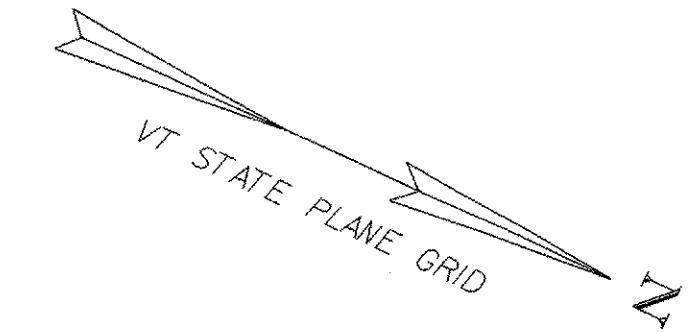
COLD PLANING, BITUMINOUS PAVEMENT  
2+160.0 - 2+180.0

MANUFACTURED TERMINAL SECTION, FLARED  
2+238.7 RT. - 2+250.1 RT.  
2+250.1 RT. - 2+260.0 RT.

STEEL BEAM GUARDRAIL, GALVANIZED  
2+230.2 LT. - 2+260.0 LT.

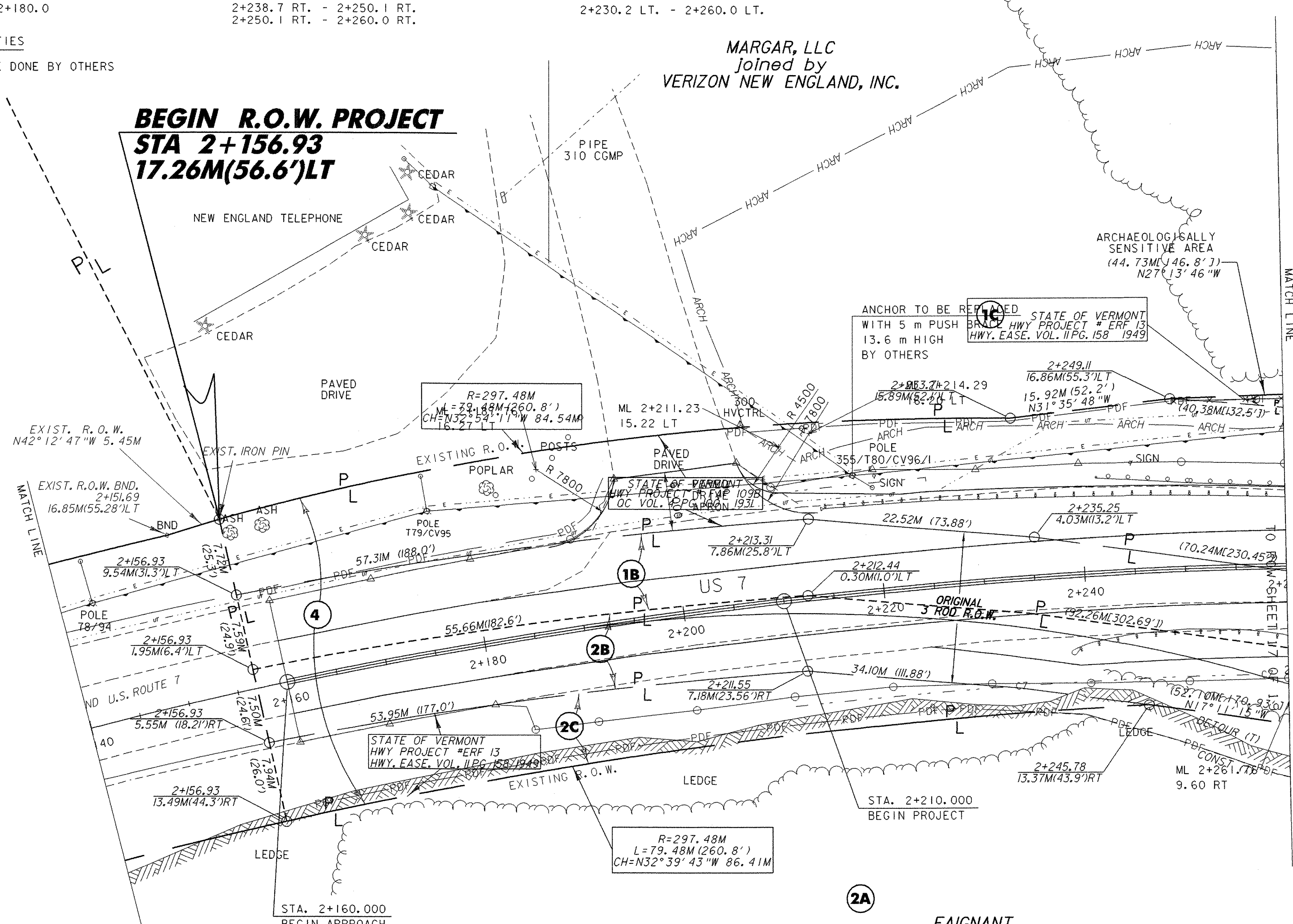
UTILITIES  
UTILITY WORK TO BE DONE BY OTHERS

MARGAR, LLC  
Joined by  
VERIZON NEW ENGLAND, INC.



N/F  
GOODNICK

**BEGIN R.O.W. PROJECT**  
**STA 2+156.93**  
**17.26M(56.6')LT**



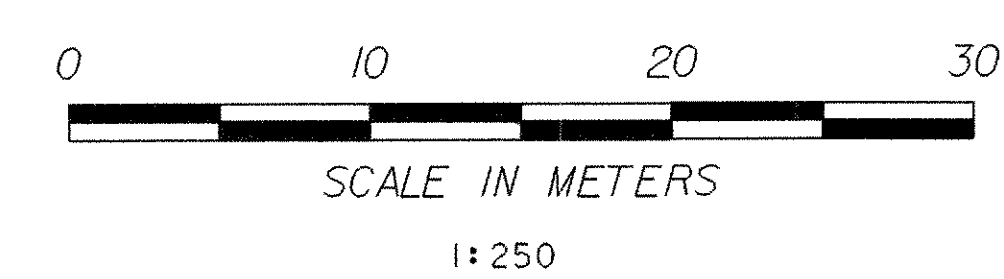
STATE OF VERMONT  
HWY PROJECT #ERF 13  
HWY. EASE. VOL. II PG. 158 1949

FAIGNANT,  
JOHN PAUL

LINES SHOWN ON THIS PLAN AS EXISTING  
PROPERTY LINES P/L ARE BELIEVED TO  
BE ACCURATE BUT SHOULD NOT BE RELIED  
UPON FOR PURPOSES UNRELATED TO THE  
STATE OF VERMONT'S ACQUISITION OF LAND  
AND RIGHTS FOR THIS PROJECT.

**FOR R.O.W.  
USE ONLY**

R.O.W. LAYOUT PLAN I



PROJECT NAME:	RUTLAND TOWN
PROJECT NUMBER:	BRF 019-3(48)
FILE NAME:	sbi72ip1.i
PROJECT LEADER:	R.WHITCOMB
DESIGNED BY:	T. LACKEY
ROW SHEET 17 OF 19	
PLOT DATE:	11-MAR-2008
DRAWN BY:	T. LACKEY
CHECKED BY:	R.WHITCOMB
SHEET 12 OF 75	