

SHEET INDEX
SEE SHEET 2 PRELIMINARY INFORMATION SHEET

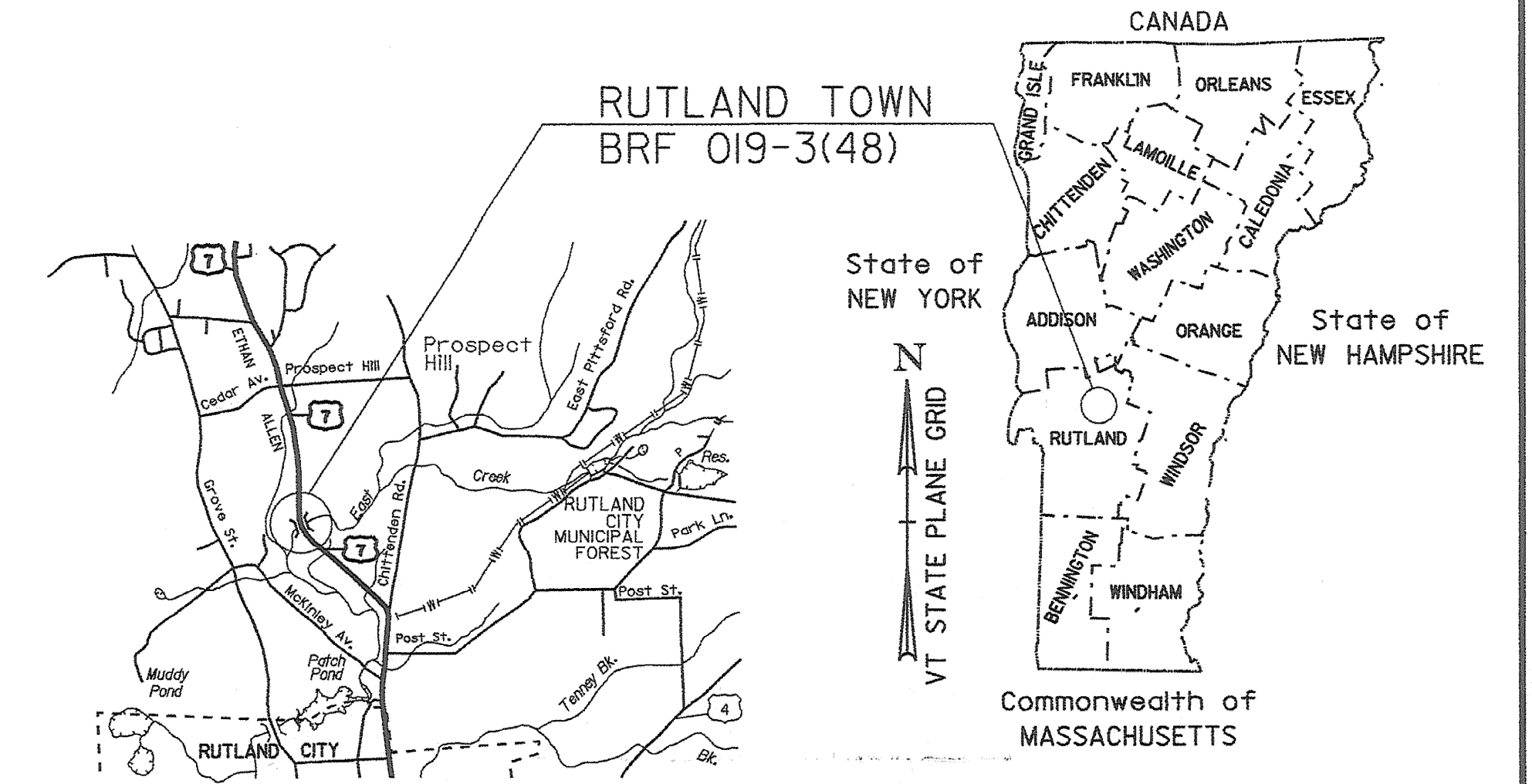
STATE OF VERMONT AGENCY OF TRANSPORTATION



PROPOSED IMPROVEMENT

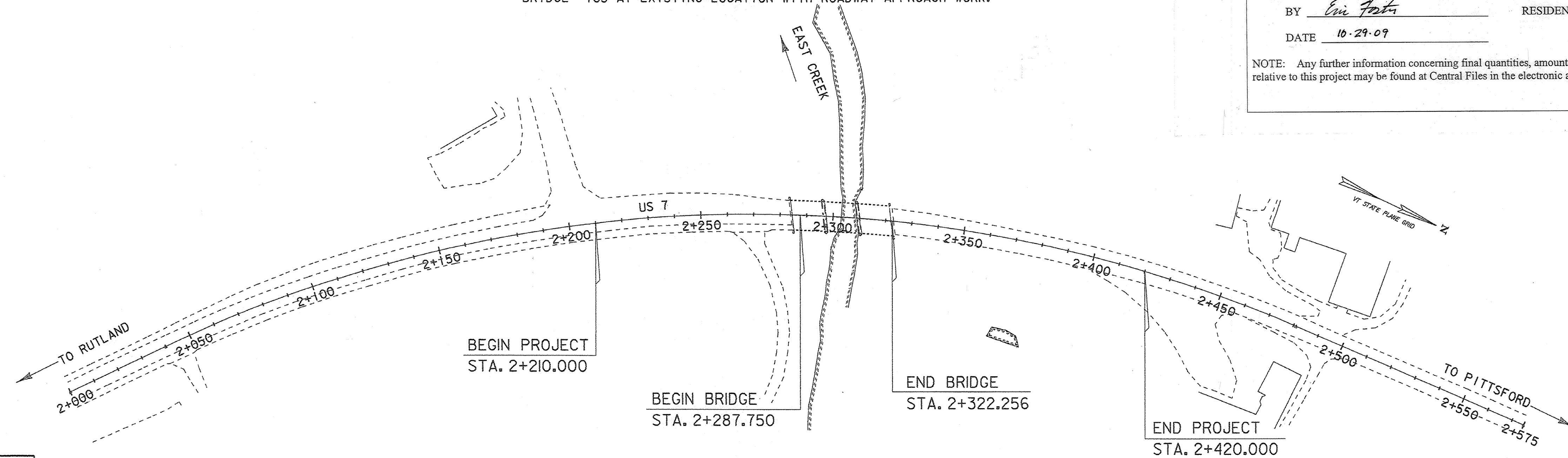
BRIDGE PROJECT TOWN OF RUTLAND COUNTY OF RUTLAND US 7 (PRINCIPAL ARTERIAL) BRIDGE #103 OVER EAST CREEK

BEGINNING ON US 7 IN THE TOWN OF RUTLAND APPROXIMATELY 1.869 KM (1.161 MILES) NORTH OF THE CITY OF RUTLAND AND EXTENDING NORTH 0.165 KM (0.103 MILES).
 LENGTH OF BRIDGE = 34.506 M
 LENGTH OF ROADWAY = 175.494 M
 LENGTH OF PROJECT = 210.000 M
 WORK TO BE PERFORMED UNDER THIS PROJECT CONSISTS OF REPLACEMENT OF BRIDGE #103 AT EXISTING LOCATION WITH ROADWAY APPROACH WORK.



BUILT AS DESIGNED

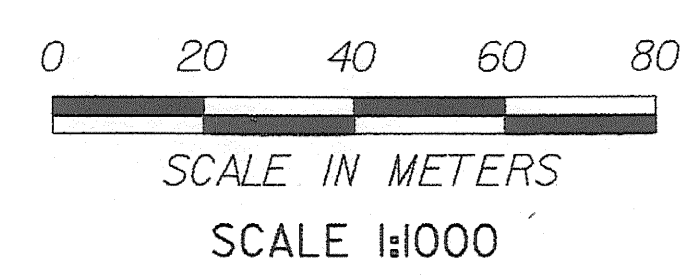
RECORD PLANS	
CONTRACTOR:	MILLER CONSTRUCTION - WINDSOR, VT
RESIDENT ENGINEER:	ERIC FOSTER
CONSTRUCTION BEGAN:	JUNE 15, 2008
CONSTRUCTION COMPLETE:	SEPTEMBER 9, 2009
RECORD PLANS BY:	ERIC FOSTER
I HEREBY CERTIFY THAT ALL THE CONSTRUCTION REQUIRED BY THIS SET OF DRAWINGS HAS BEEN ACCOMPLISHED AS INDICATED HEREIN.	
BY	<i>Eric Foster</i> RESIDENT ENGINEER
DATE	10-29-09
NOTE: Any further information concerning final quantities, amounts or other details relative to this project may be found at Central Files in the electronic archives.	



CONVENTIONAL SYMBOLS	
COUNTY LINE	——— COUNTY LINE ———
TOWN LINE	——— TOWN LINE ———
LIMITS OF ACCESS	—○—○—○—○—
POINT OF ACCESS	X
FENCE LINE	X—X—X—X—X—
STONE WALL	○○○○○○○○○○○○○○○○
TRAVELED WAY	———
GUARD RAIL	—○—○—○—○—
RAILROAD	—————
SURVEY LINE	———
CULVERT	———
POWER POLE	⊕
TELEPHONE POLE	⊕
TREES	⊕ X
CONTROL OF ACCESS	———
PROPERTY LINE	———
R.O.W. TAKING LINE	—○— SR —○— SR —○— SR
SLOPE RIGHTS	—△—△—△—△—
TOP OF CUT	—○—○—○—○—
TOE OF SLOPE	—○—○—○—○—

SURVEYED BY : L. ORVIS
 SURVEYED DATE : 09/95

DATUM
 VERTICAL NAVD 88
 HORIZONTAL NAD 83/92
 LEAST SQUARE



THESE PLANS ARE SUBJECT TO SUCH ENGINEERING CHANGES AS MAY BE REQUIRED BY THE FEDERAL HIGHWAY ADMINISTRATION OR THE DIRECTOR OF PROGRAM DEVELOPMENT.
 CONSTRUCTION IS TO BE CARRIED ON IN ACCORDANCE WITH THESE PLANS AND THE STANDARD SPECIFICATIONS FOR CONSTRUCTION DATED 2006, AS APPROVED BY THE FEDERAL HIGHWAY ADMINISTRATION ON JUNE 15, 2006 FOR USE ON THIS PROJECT, INCLUDING ALL SUBSEQUENT REVISIONS AND SUCH REVISED SPECIFICATIONS AND SPECIAL PROVISIONS AS ARE INCORPORATED IN THESE PLANS.

22-FEB-2008

Metric
 UNLESS NOTED OTHERWISE
 STATIONS ARE IN KILOMETERS
 ELEVATIONS ARE IN METERS
 DIMENSIONS ARE IN MILLIMETERS

BUILT AS DESIGNED

DIRECTOR OF PROGRAM DEVELOPMENT	
APPROVED <i>Rudolf F. Johnson</i>	DATE 2-22-08
PROJECT MANAGER : R. WHITCOMB	
PROJECT NAME :	RUTLAND TOWN
PROJECT NUMBER :	BRF 019-3(48)
SHEET 1 OF 75 SHEETS	