

DURABLE 4 INCH WHITE LINE (SEE OPTION ITEMS)
 STA. c 12+25 - STA. c 17+75 (SOLID LT & RT)

TEMPORARY 4 INCH WHITE LINE, PAINT
 STA. c 12+25 - STA. c 17+75 (SOLID LT & RT)

DURABLE 4 INCH YELLOW LINE (SEE OPTION ITEMS)
 STA. c 12+25 - STA. c 17+75 (SOLID LT & RT)

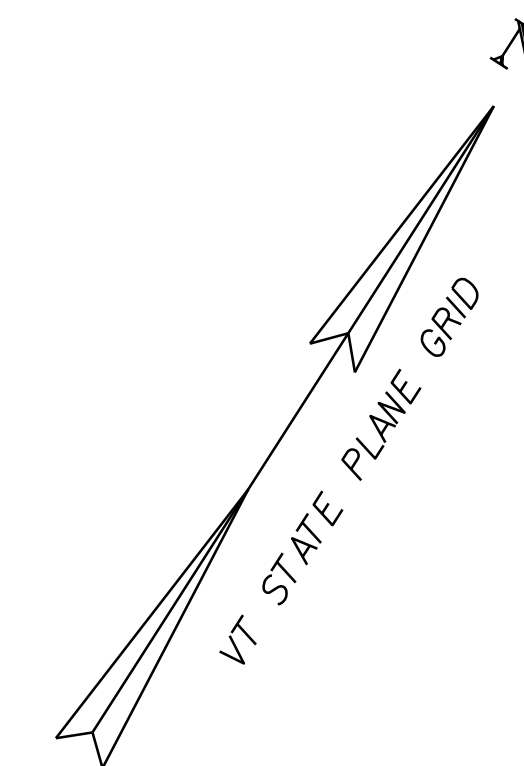
TEMPORARY 4 INCH YELLOW LINE, PAINT
 STA. c 12+25 - STA. c 17+75 (SOLID LT & RT)

CURVE #3
 DELTA = 51°37'33"
 D = 11°07'31" (1) D = 3°10'59" (2)
 R = 515.00' (1) R = 1800.00' (2)
 T = 256.65' (1) T = 367.58' (2)
 L = 414.60' (1) L = 172.79' (2)
 BANKING 0.078 FT/FT / 0.04 FT/FT
 RUNOFF 160' / 125' (40 MPH)
 SEE SUPERELEVATION DIAGRAMS
 FOR BANKING INFORMATION

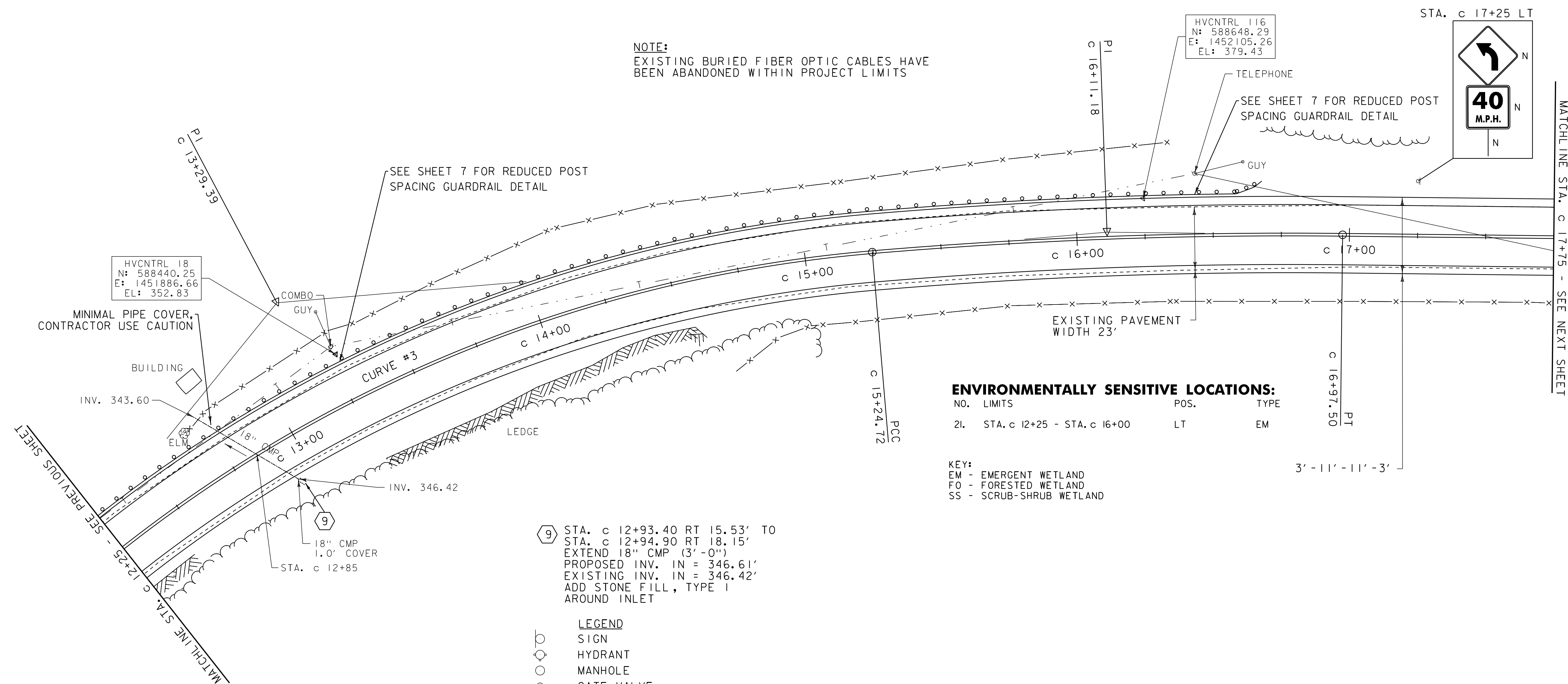
STEEL BEAM GUARDRAIL, GALVANIZED W/8 FEET POSTS
 STA. c 12+25 - STA. c 16+70 LT

ANCHOR FOR STEEL BEAM RAIL
 STA. c 16+70 LT

REMOVAL AND DISPOSAL OF GUARDRAIL
 STA. c 12+25 - STA. c 16+70 LT



NOTE:
 EXISTING BURIED FIBER OPTIC CABLES HAVE
 BEEN ABANDONED WITHIN PROJECT LIMITS



ENVIRONMENTALLY SENSITIVE LOCATIONS:

NO.	LIMITS	POS.	TYPE
2L	STA. c 12+25 - STA. c 16+00	LT	EM

KEY:
 EM - EMERGENT WETLAND
 FO - FORESTED WETLAND
 SS - SCRUB-SHRUB WETLAND

9 STA. c 12+93.40 RT 15.53' TO
 STA. c 12+94.90 RT 18.15'
 EXTEND 18" CMP (3'-0")
 PROPOSED INV. IN = 346.61'
 EXISTING INV. IN = 346.42'
 ADD STONE FILL, TYPE I
 AROUND INLET

- LEGEND**
- SIGN
 - HYDRANT
 - MANHOLE
 - GATE VALVE
 - GAS PIPELINE MARKER
 - CATCH BASIN / DROP INLET
 - CURB INLET
 - BORING LOCATION
 - ✉ MAILBOX
 - UTILITY POLE
 - FLUSHING BASIN

- SIGN LEGEND**
- R = REMOVE
 - R&S = REMOVE AND SALVAGE
 - RET = RETAIN
 - S = SALVAGE
 - N = NEW
 - B-B = BACK TO BACK

SCALE 1" = 20'-0"
 20 0 20

DATUM
 NAVD 88
 NAD 83

PROJECT LAYOUT SHEET 51

PROJECT NAME: ADDISON - NEW HAVEN
 PROJECT NUMBER: STP 9632(1)

FILE NAME: p95B076.dgn
 PROJECT LEADER: CDL
 DESIGNED BY: SJL
 PLOT FILE: p95B076.74.1

PLOT DATE: 3/13/2012
 DRAWN BY: SJL
 CHECKED BY: EPD
 SHEET 74 OF 186