

STONE FILL, TYPE I
STA. c 6+25 - STA. c 8+25 LT

GRUBBING MATERIAL
STA. c 6+25 - STA. c 8+25 LT

GEOTEXTILE FOR SILT FENCE
STA. c 6+25 - STA. c 8+25 LT

GEOTEXTILE UNDER STONE FILL
STA. c 6+25 - STA. c 8+25 LT

STEEL BEAM GUARDRAIL, GALVANIZED W/8 FEET POSTS
STA. c ~~9+45.00~~ - STA. c 12+25 LT
9+50.00

ANCHOR FOR STEEL BEAM RAIL
STA. c ~~9+45.00 LT~~
9+50 LT

REMOVAL AND DISPOSAL OF GUARDRAIL
STA. c 9+45.00 - STA. c 12+25 LT

DURABLE 4 INCH WHITE LINE (SEE OPTION ITEMS)
STA. c 6+25 - STA. c 12+25 (SOLID LT & RT)

TEMPORARY 4 INCH WHITE LINE, PAINT
STA. c 6+25 - STA. c 12+25 (SOLID LT & RT)

DURABLE 4 INCH YELLOW LINE (SEE OPTION ITEMS)
STA. c 6+25 - STA. c 12+25 (SOLID LT & RT)

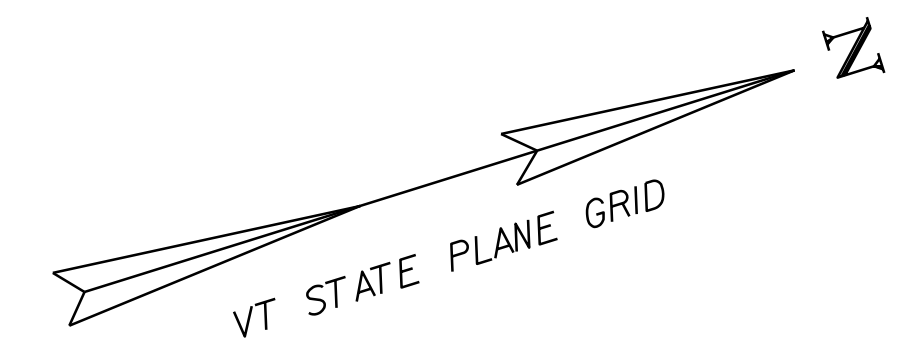
TEMPORARY 4 INCH YELLOW LINE, PAINT
STA. c 6+25 - STA. c 12+25 (SOLID LT & RT)

REMOVING AND RESETTING FENCE
STA. c 6+25 - STA. c 8+96 LT

6 INCH UNDERDRAIN PIPE
STA. c 6+25 - STA. c ~~6+75 RT~~ 6+74
STA. c 7+00 - STA. c 11+75 RT

6 INCH UNDERDRAIN CARRIER PIPE
STA. c 6+75 RT STA. c 11+75 RT
STA. c 9+25 RT

UNDERDRAIN FLUSHING BASIN
STA. c ~~6+75 RT~~ STA. c ~~11+75 RT~~
STA. c ~~9+25 RT~~ C 6+74 RT
C 11+75 RT

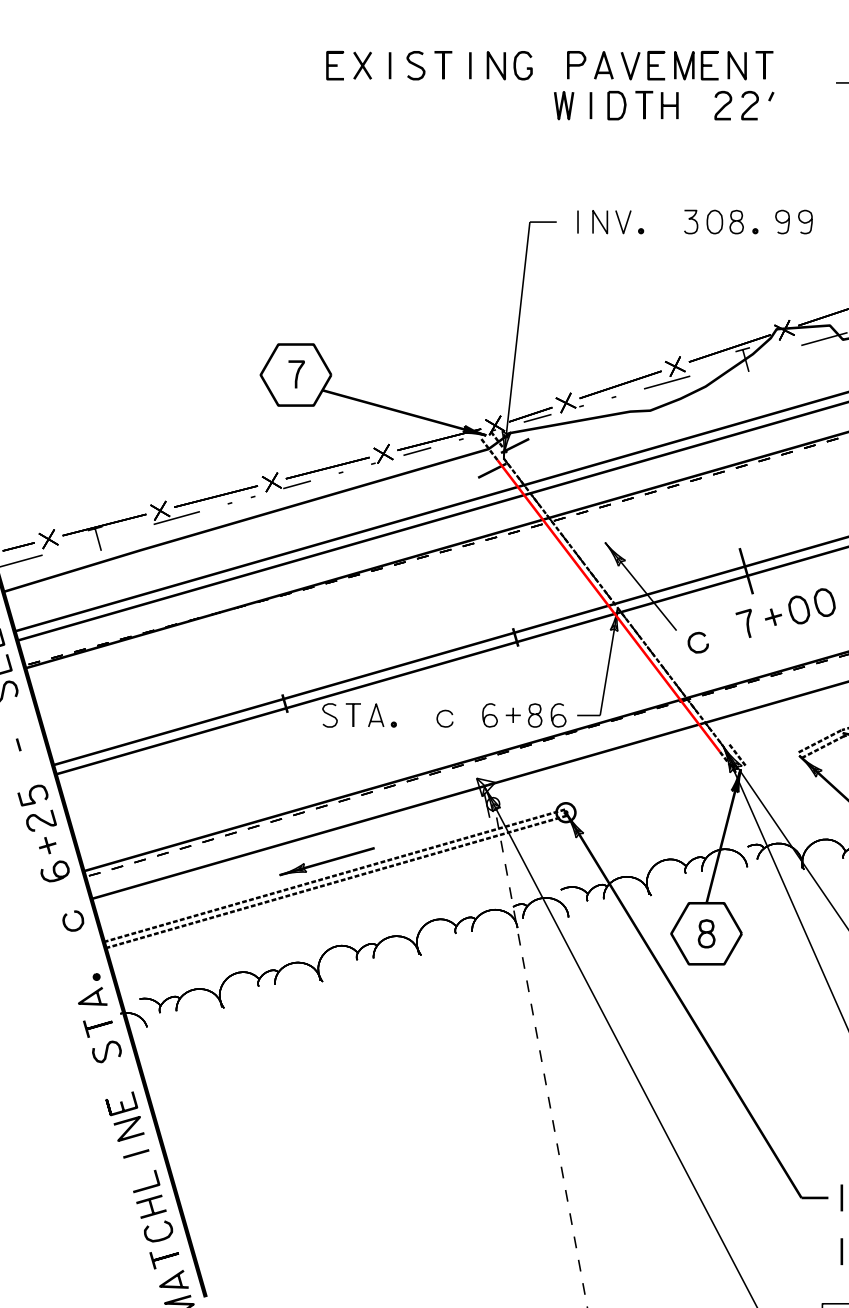
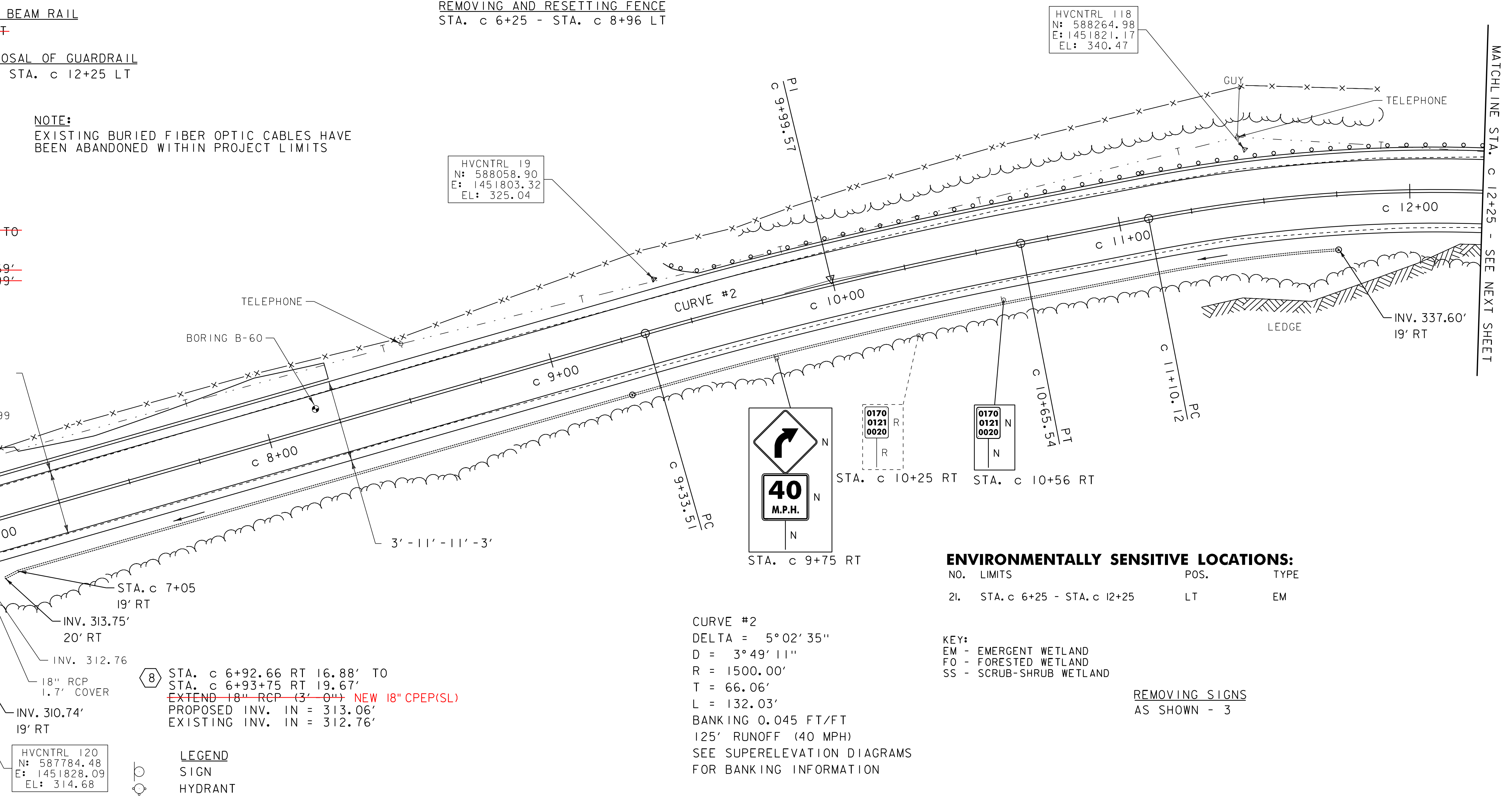


NOTE:
EXISTING BURIED FIBER OPTIC CABLES HAVE BEEN ABANDONED WITHIN PROJECT LIMITS

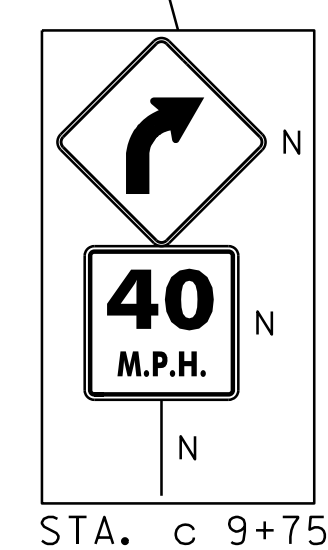
7 STA. c ~~6+77.86 LT 21.07~~ TO
STA. c ~~6+78.95 LT 18.27~~
EXTEND 18" RCP (3'-0")
PROPOSED INV. OUT = 308.69'
EXISTING INV. OUT = 308.99'

HVCNTRL 19
N: 588058.90
E: 1451803.32
EL: 325.04

HVCNTRL 118
N: 588264.98
E: 1451821.17
EL: 340.47



8 STA. c 6+92.66 RT 16.88' TO
STA. c 6+93+75 RT 19.67'
EXTEND 18" RCP (3'-0") NEW 18" CPEP(SL)
PROPOSED INV. IN = 313.06'
EXISTING INV. IN = 312.76'



0170
0121
0020

0170
0121
0020

ENVIRONMENTALLY SENSITIVE LOCATIONS:

NO.	LIMITS	POS.	TYPE
2I.	STA. c 6+25 - STA. c 12+25	LT	EM

KEY:
EM - EMERGENT WETLAND
FO - FORESTED WETLAND
SS - SCRUB-SHRUB WETLAND

REMOVING SIGNS
AS SHOWN - 3

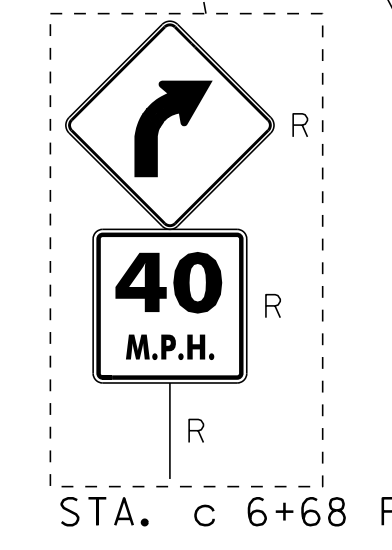
CURVE #2
DELTA = 5°02'35"
D = 3°49'11"
R = 1500.00'
T = 66.06'
L = 132.03'
BANKING 0.045 FT/FT
125' RUNOFF (40 MPH)
SEE SUPERELEVATION DIAGRAMS
FOR BANKING INFORMATION

- LEGEND**
- SIGN
 - HYDRANT
 - MANHOLE
 - GATE VALVE
 - GAS PIPELINE MARKER
 - CATCH BASIN / DROP INLET
 - CURB INLET
 - BORING LOCATION
 - ⊕ MAILBOX
 - ⊕ UTILITY POLE
 - FLUSHING BASIN

- SIGN LEGEND**
- R = REMOVE
 - R&S = REMOVE AND SALVAGE
 - RET = RETAIN
 - S = SALVAGE
 - N = NEW
 - B-B = BACK TO BACK



DATUM
NAVD 88
NAD 83



PROJECT LAYOUT SHEET 50

PROJECT NAME: ADDISON - NEW HAVEN

PROJECT NUMBER: STP 9632(1)

FILE NAME: p95B076.dgn

PROJECT LEADER: CDL

DESIGNED BY: SJL

PLOT FILE: p95B076_73.1

PLOT DATE: 3/13/2012

DRAWN BY: SJL

CHECKED BY: EPD

SHEET 73 OF 186