

CURVE #1
 DELTA = 20°51'51"
 D = 1°50'54" (1) D = 5°27'24" (2)
 R = 3100.00' (1) R = 1050.00' (2)
 T = 342.27' (1) T = 212.40' (2)
 L = 252.49' (1) L = 296.84' (2)
 BANKING 0.03 FT/FT / 0.066
 RUNOFF 140' / 150' (45 MPH)
 SEE SUPERELEVATION DIAGRAMS
 FOR BANKING INFORMATION

STONE FILL, TYPE 1
 STA. c 2+30 - STA. c 2+45 RT
 STA. c 5+25 - STA. c 6+25 LT

GRUBBING MATERIAL
 STA. c 2+30 - STA. c 2+45 RT
 STA. c 5+25 - STA. c 6+25 LT

GEOTEXTILE FOR SILT FENCE
 STA. c 2+30 - STA. c 2+45 RT
 STA. c 5+25 - STA. c 6+25 LT

GEOTEXTILE UNDER STONE FILL
 STA. c 2+30 - STA. c 2+45 RT
 STA. c 5+25 - STA. c 6+25 LT

DURABLE 4 INCH WHITE LINE (SEE OPTION ITEMS)
 STA. c 0+50 - STA. c 6+25 (SOLID LT & RT)

TEMPORARY 4 INCH WHITE LINE, PAINT
 STA. c 0+50 - STA. c 6+25 (SOLID LT & RT)

REMOVING AND RESETTING FENCE
 STA. c 0+50 - STA. c 2+50 LT
 STA. c 3+50 - STA. c 4+50 LT

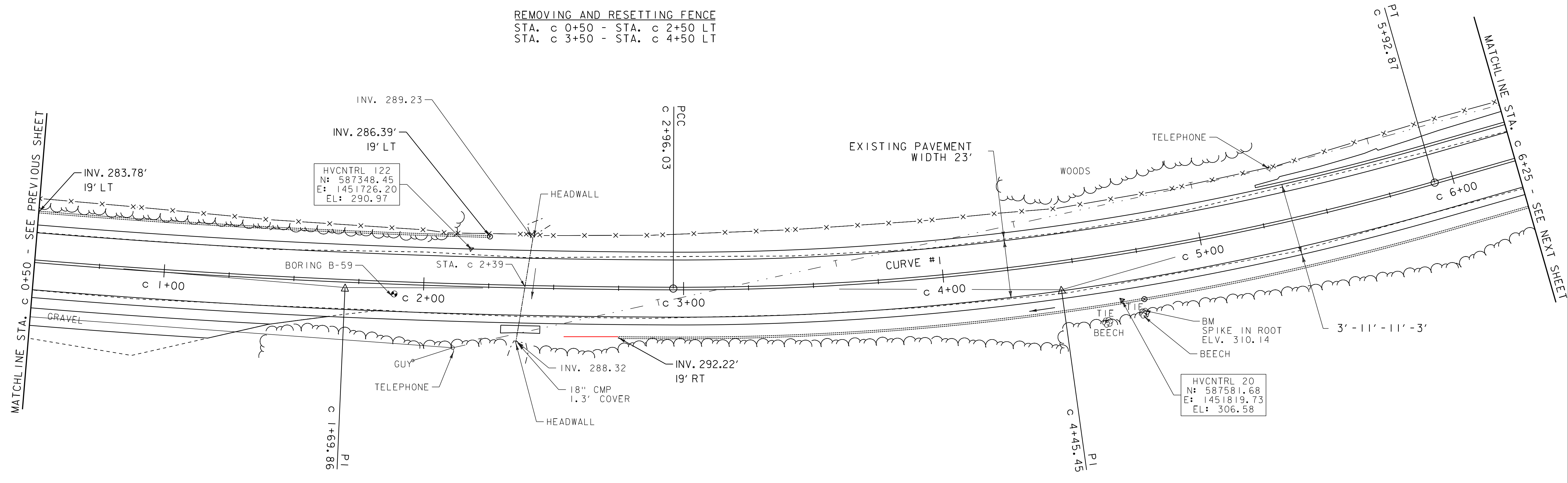
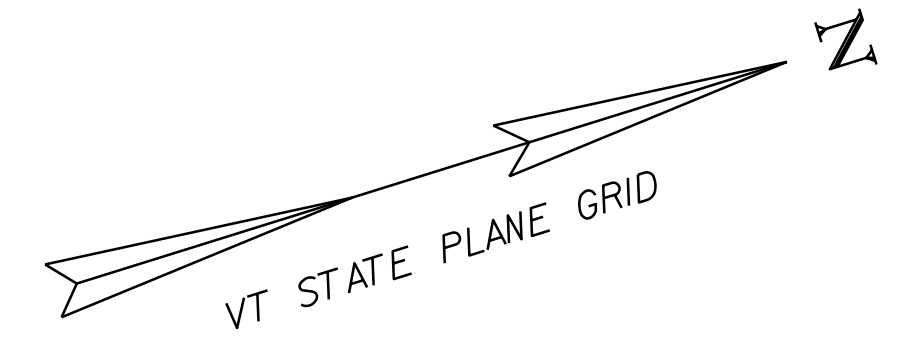
6 INCH UNDERDRAIN PIPE
 STA. c 0+50 - STA. c 2+25 LT C 2+20
 STA. c 2+75 - STA. c 6+25 RT
 2+60

6 INCH UNDERDRAIN CARRIER PIPE
 STA. c 2+25 LT
 STA. c 4+75 RT

UNDERDRAIN FLUSHING BASIN
 STA. c 2+25 LT
 STA. c 4+75 RT
 C 2+20 LT

DURABLE 4 INCH YELLOW LINE (SEE OPTION ITEMS)
 STA. c 0+50 - STA. c 6+25 (SOLID LT & RT)

TEMPORARY 4 INCH YELLOW LINE, PAINT
 STA. c 0+50 - STA. c 6+25 (SOLID LT & RT)



NOTE:
 EXISTING BURIED FIBER OPTIC CABLES HAVE
 BEEN ABANDONED WITHIN PROJECT LIMITS

ENVIRONMENTALLY SENSITIVE LOCATIONS:

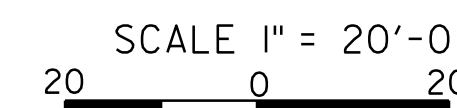
NO.	LIMITS	POS.	TYPE
21.	STA. c 0+00 - STA. c 6+25	LT	EM

KEY:
 EM - EMERGENT WETLAND
 FO - FORESTED WETLAND
 SS - SCRUB-SHRUB WETLAND

- LEGEND**
- SIGN
 - HYDRANT
 - MANHOLE
 - GATE VALVE
 - GAS PIPELINE MARKER
 - CATCH BASIN / DROP INLET
 - = CURB INLET
 - BORING LOCATION
 - ✉ MAILBOX
 - UTILITY POLE
 - FLUSHING BASIN

- SIGN LEGEND**
- R = REMOVE
 - R&S = REMOVE AND SALVAGE
 - RET = RETAIN
 - S = SALVAGE
 - N = NEW
 - B-B = BACK TO BACK

DATUM
 NAVD 88
 NAD 83



PROJECT LAYOUT SHEET 49

PROJECT NAME: ADDISON - NEW HAVEN

PROJECT NUMBER: STP 9632(1)

FILE NAME: p95B076.dgn

PROJECT LEADER: CDL

DESIGNED BY: SJL

PLOT FILE: p95B076_72.i

PLOT DATE: 3/13/2012

DRAWN BY: SJL

CHECKED BY: EPD

SHEET 72 OF 186