

STEEL BEAM GUARDRAIL, GALVANIZED W/8 FEET POSTS
~~STA. b 94+75 - STA. b 95+57.25 RT B 95+62 RT~~
~~STA. b 95+17.25 - STA. b 95+67.25 LT B 95+08.5 - B 95+71LT~~
~~STA. b 95+94.75 - STA. b 96+44.75 RT B 95+87 - B 96+49.5 RT~~
~~STA. b 96+04.75 - STA. b 97+42.25 LT B 95+96 - B 100+50 LT~~

STEEL BEAM GUARDRAIL,
 GALVANIZED/NESTED W/8 FEET POSTS
~~STA. b 95+57.25 - STA. b 95+94.75 RT B 95+62 - B 95+87 RT~~
~~STA. b 95+67.25 - STA. b 96+04.75 LT B 95+71 - B 95+96 LT~~

ANCHOR FOR STEEL BEAM RAIL
~~STA. b 95+17.25 LT B 95+08.5 LT~~
~~STA. b 96+44.75 RT B 96+49.5 RT~~
~~STA. b 97+42.25 LT~~

DURABLE 4 INCH WHITE LINE (SEE OPTION ITEMS)
 STA. b 94+75 - STA. b 100+50 (SOLID LT & RT)

TEMPORARY 4 INCH WHITE LINE, PAINT
 STA. b 94+75 - STA. b 100+50 (SOLID LT & RT)

DURABLE 4 INCH YELLOW LINE (SEE OPTION ITEMS)
 STA. b 94+75 - STA. b 100+50 (SOLID LT & RT)

TEMPORARY 4 INCH YELLOW LINE, PAINT
 STA. b 94+75 - STA. b 100+50 (SOLID LT & RT)

REMOVING AND RESETTING FENCE
 STA. b 94+75 - STA. b 94+88 LT
 STA. b 98+14 - STA. b 98+84 LT

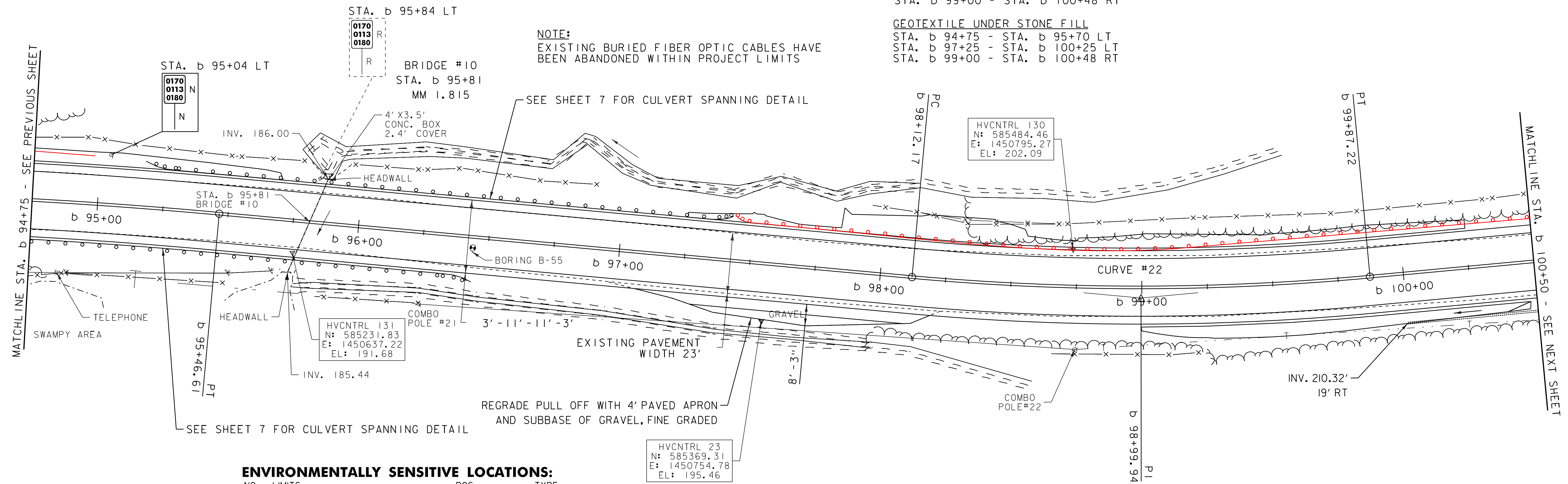
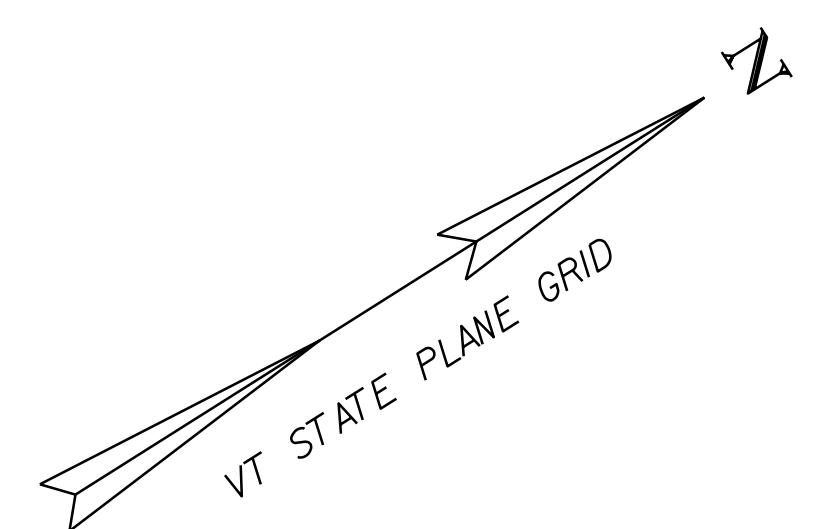
6 INCH UNDERDRAIN PIPE
 STA. b 100+00 - STA. b 100+50 RT

STONE FILL, TYPE I
 STA. b 94+75 - STA. b 95+70 LT
 STA. b 97+25 - STA. b 100+25 LT
 STA. b 99+00 - STA. b 100+48 RT

GRUBBING MATERIAL
 STA. b 94+75 - STA. b 95+70 LT
 STA. b 97+25 - STA. b 100+25 LT
 STA. b 99+00 - STA. b 100+48 RT

GEOTEXTILE FOR SILT FENCE
 STA. b 94+75 - STA. b 95+70 LT
 STA. b 97+25 - STA. b 100+25 LT
 STA. b 99+00 - STA. b 100+48 RT

6" UNDERDRAIN PIPE
 B 94+75 - B 95+00 LT



NOTE:
 EXISTING BURIED FIBER OPTIC CABLES HAVE
 BEEN ABANDONED WITHIN PROJECT LIMITS

ENVIRONMENTALLY SENSITIVE LOCATIONS:

| NO. | LIMITS | POS. | TYPE |
|-----|---|----------|------------------------------------|
| 18. | STA. b 94+75 - STA. b 98+25 STA. b 95+00 - STA. b 100+00 | LT RT | EM/ WATERCOURSE EM/ WATERCOURSE |

KEY:
 EM - EMERGENT WETLAND
 FO - FORESTED WETLAND
 SS - SCRUB-SHRUB WETLAND

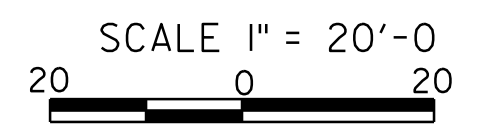
CURVE #22
 DELTA = 10° 33' 28"
 D = 6° 01' 52"
 R = 950.00'
 T = 87.78'
 L = 175.05'
 BANKING 0.069 FT/FT
 160' RUNOFF (45 MPH)
 SEE SUPERELEVATION DIAGRAMS
 FOR BANKING INFORMATION

REMOVING SIGNS
 AS SHOWN - 1

- LEGEND**
- SIGN
 - HYDRANT
 - MANHOLE
 - GATE VALVE
 - GAS PIPELINE MARKER
 - CATCH BASIN / DROP INLET
 - = CURB INLET
 - ⊙ BORING LOCATION
 - ☐ MAILBOX
 - ☐ UTILITY POLE
 - FLUSHING BASIN

- SIGN LEGEND**
- R = REMOVE
 - R&S = REMOVE AND SALVAGE
 - RET = RETAIN
 - S = SALVAGE
 - N = NEW
 - B-B = BACK TO BACK

DATUM
 NAVD 88
 NAD 83



| | | |
|--------------------------------|-----------------------------------|----------------------|
| PROJECT LAYOUT SHEET 45 | PROJECT NAME: ADDISON - NEW HAVEN | PLOT DATE: 3/13/2012 |
| | PROJECT NUMBER: STP 9632(1) | DRAWN BY: SJL |
| | FILE NAME: p95B076.dgn | CHECKED BY: EPD |
| | PROJECT LEADER: CDL | SHEET 68 OF 186 |