

STONE FILL, TYPE 1
STA. 557+50 - STA. 563+25 LT

GRUBBING MATERIAL
STA. 557+50 - STA. 563+25 LT

GEOTEXTILE FOR SILT FENCE
STA. 557+50 - STA. 563+25 LT

GEOTEXTILE UNDER STONE FILL
STA. 557+50 - STA. 563+25 LT

DURABLE 4 INCH WHITE LINE (SEE OPTION ITEMS)
STA. 557+50 - STA. 563+25 (SOLID LT & RT)

TEMPORARY 4 INCH WHITE LINE, PAINT
STA. 557+50 - STA. 563+25 (SOLID LT & RT)

REMOVING SIGNS
AS SHOWN - 2

ERECTING SALVAGED SIGNS
AS SHOWN - 2

DURABLE 4 INCH YELLOW LINE (SEE OPTION ITEMS)
STA. 557+50 - STA. 563+25 (SOLID LT & RT)

TEMPORARY 4 INCH YELLOW LINE, PAINT
STA. 557+50 - STA. 563+25 (SOLID LT & RT)

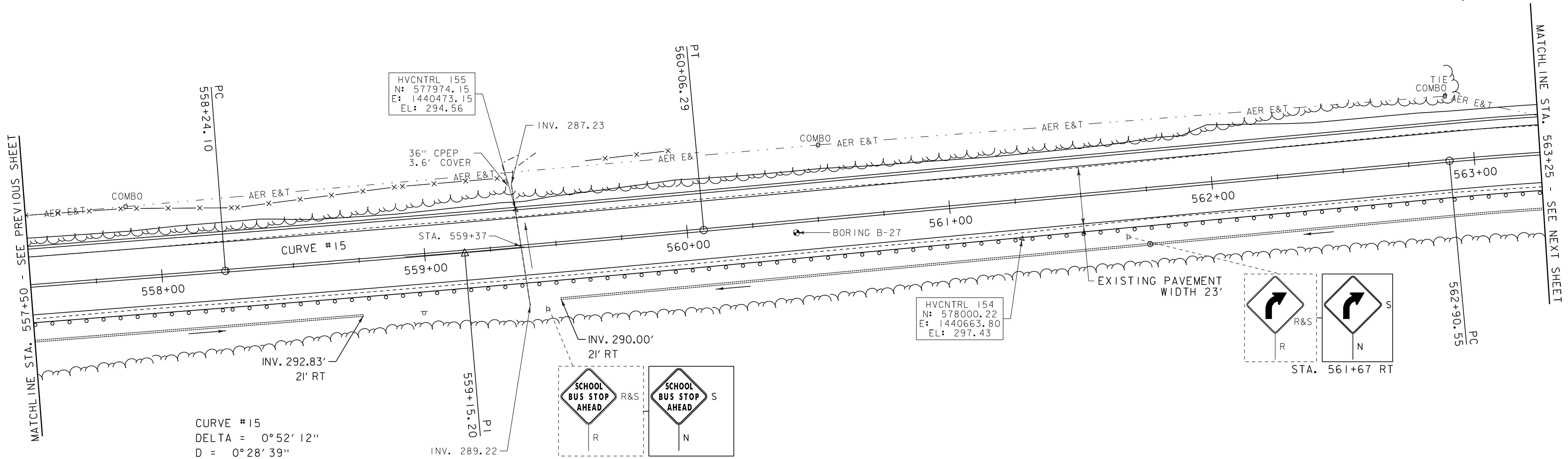
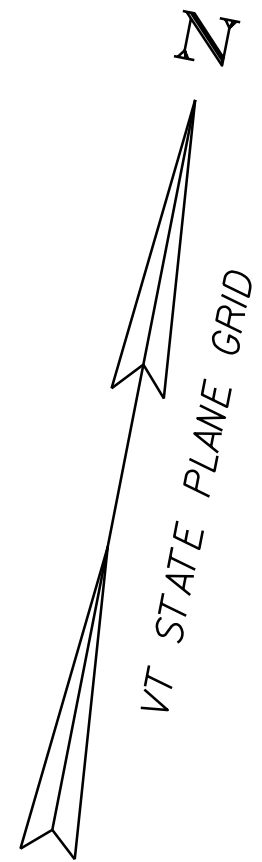
6 INCH UNDERDRAIN PIPE
STA. 557+50 - STA. ~~558+75~~ RT 558+76
STA. 559+50 - STA. 563+25 RT

6 INCH UNDERDRAIN CARRIER PIPE
STA. 561+75 RT

UNDERDRAIN FLUSHING BASIN
STA. 561+75 RT

STEEL BEAM GUARDRAIL, GALVANIZED W/8 FEET POSTS
STA. 557+50 - STA. ~~563+25~~ RT
560+65 RT

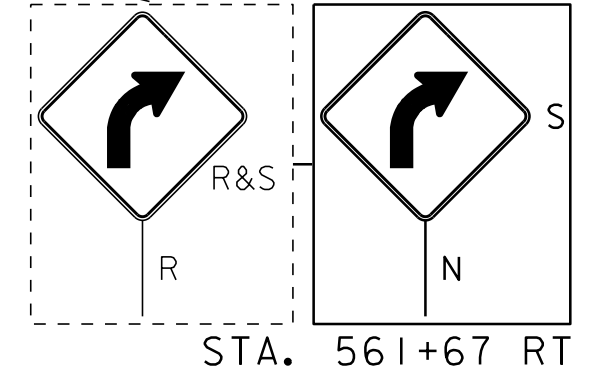
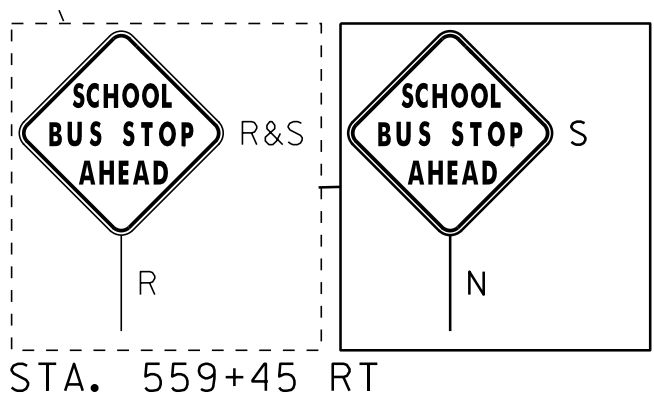
ANCHOR FOR STEEL BEAM RAIL
STA 560+65 RT



CURVE #15
DELTA = 0°52'12"
D = 0°28'39"
R = 12000.00'
T = 91.10'
L = 182.20'
REVERSE CROWN
125' RUNOFF (45 MPH)
SEE SUPERELEVATION DIAGRAMS
FOR BANKING INFORMATION

HVCNTRL 155
N: 577974.15
E: 1440473.15
EL: 294.56

HVCNTRL 154
N: 578000.22
E: 1440663.80
EL: 297.43



ENVIRONMENTALLY SENSITIVE LOCATIONS:

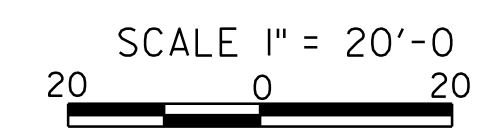
NO.	LIMITS	POS.	TYPE
9.	STA. 557+50 - STA. 561+50	LT	EM - WET MEADOW
10.	STA. 558+75 - STA. 560+50	RT	EM - WET MEADOW

KEY:
EM - EMERGENT WETLAND
FO - FORESTED WETLAND
SS - SCRUB-SHRUB WETLAND

- LEGEND**
- SIGN
 - HYDRANT
 - MANHOLE
 - GATE VALVE
 - GAS PIPELINE MARKER
 - CATCH BASIN / DROP INLET
 - CURB INLET
 - BORING LOCATION
 - MAILBOX
 - UTILITY POLE
 - FLUSHING BASIN

- SIGN LEGEND**
- R = REMOVE
 - R&S = REMOVE AND SALVAGE
 - RET = RETAIN
 - S = SALVAGE
 - N = NEW
 - B-B = BACK TO BACK

DATUM
NAVD 88
NAD 83



PROJECT LAYOUT SHEET 21	PROJECT NAME: ADDISON - NEW HAVEN
	PROJECT NUMBER: STP 9632(1)
	FILE NAME: p95B076.dgn
PROJECT LEADER: CDL	PLOT DATE: 3/13/2012
DESIGNED BY: SJL	DRAWN BY: SJL
PLOT FILE: p95B076_44.1	CHECKED BY: EPD
	SHEET 44 OF 186