

GPS CONTROL POINTS

HVCTRL #38

CHALKER
 NORTH = 578921.073
 EAST = 1444009.973
 ELEV. = 158.007

To reach from the intersection of VT routes 17 and 23 go east along route 17 for 0.15 mi to the intersection of the site of the mark on the left, on a small rise, just east of a field drive. The mark is set flush with ground surface in the top of a massive rock outcrop. It is 86.0 ft north of and about 6.6 ft higher than the centerline of route 17, 50 ft east of and about 10 ft higher than the centerline of the field drive, 131.2 ft southeast of the southeast corner of a equipment barn, 49 ft west northwest of a 18 in. oak, and 57 ft north of a fiberglass witness post in an east-west wire fenceline.

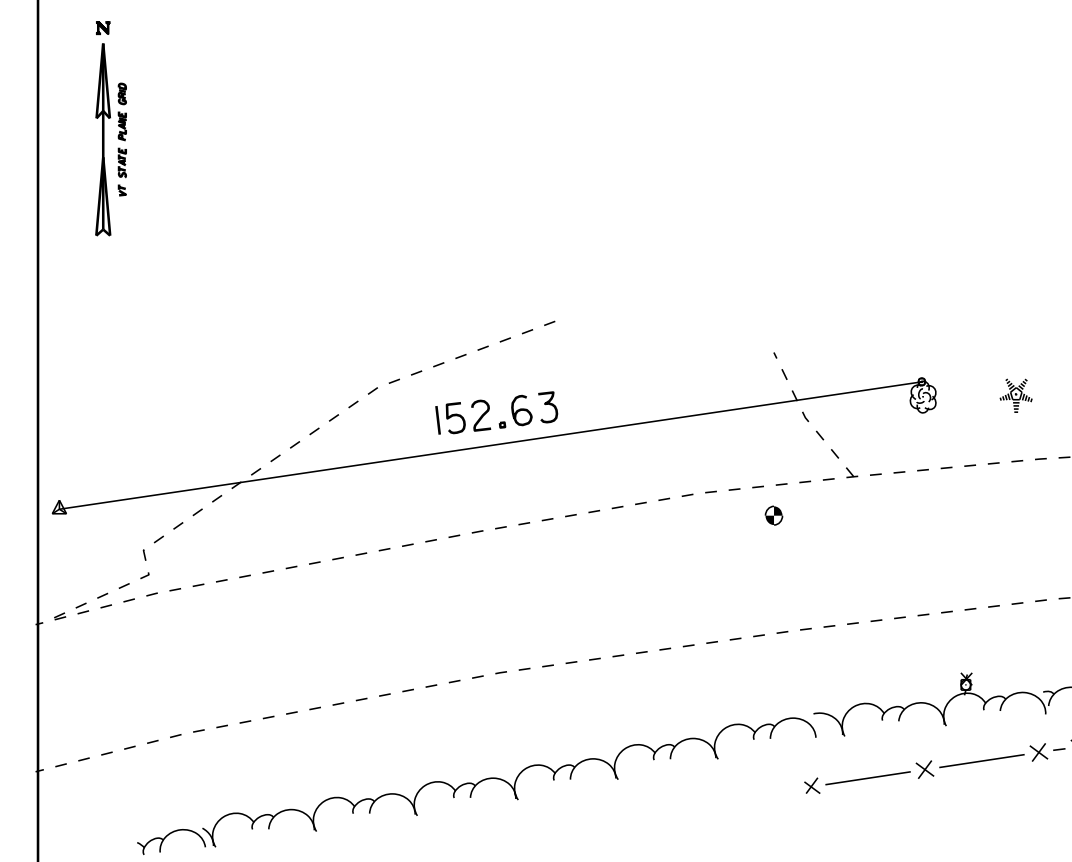
HVCTRL #99

CHALKER AZ MK
 NORTH = 580550.589
 EAST = 1444341.949
 ELEV. = 201.277

To reach from the intersection of VT routes 17 and 23 go east along route 17 for 0.4 mi to the intersection of Hallock Road left and Quaker Village Road right. Turn left and go north along Hallock Road for 0.3 mi to an old concrete barn foundation on the left and the site of the mark on the left, set in the top of the most southernly of two concrete pads in the foundation structure. It is about opposite a 2 1/2 story barn on the right. It is 37.1 ft west of and about level with the centerline of Hallock Road, 134.5 ft south of a pole no. 3002/5-1, 4.9 ft northwest of the southeast corner of the concrete pad, 4.9 ft southwest of the northeast corner of the concrete pad, and 39.4 ft north northwest of a fiberglass witness post at a wire fence corner.

HVCTRL #42

NORTH = 578109.557
 EAST = 1440898.238
 ELEV. = 310.488

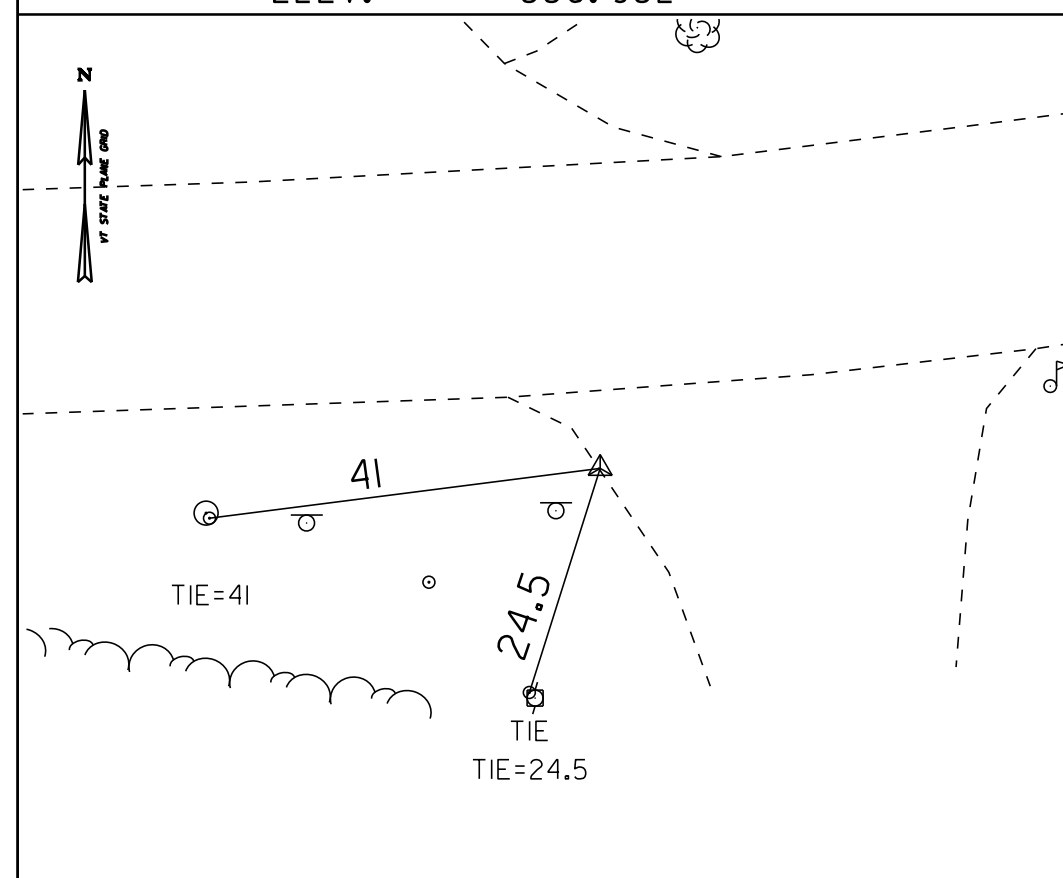


* DESCRIPTION PROVIDED BY VERMONT AGENCY OF TRANSPORTATION GEODETIC SURVEY UNIT

TRAVERSE TIES

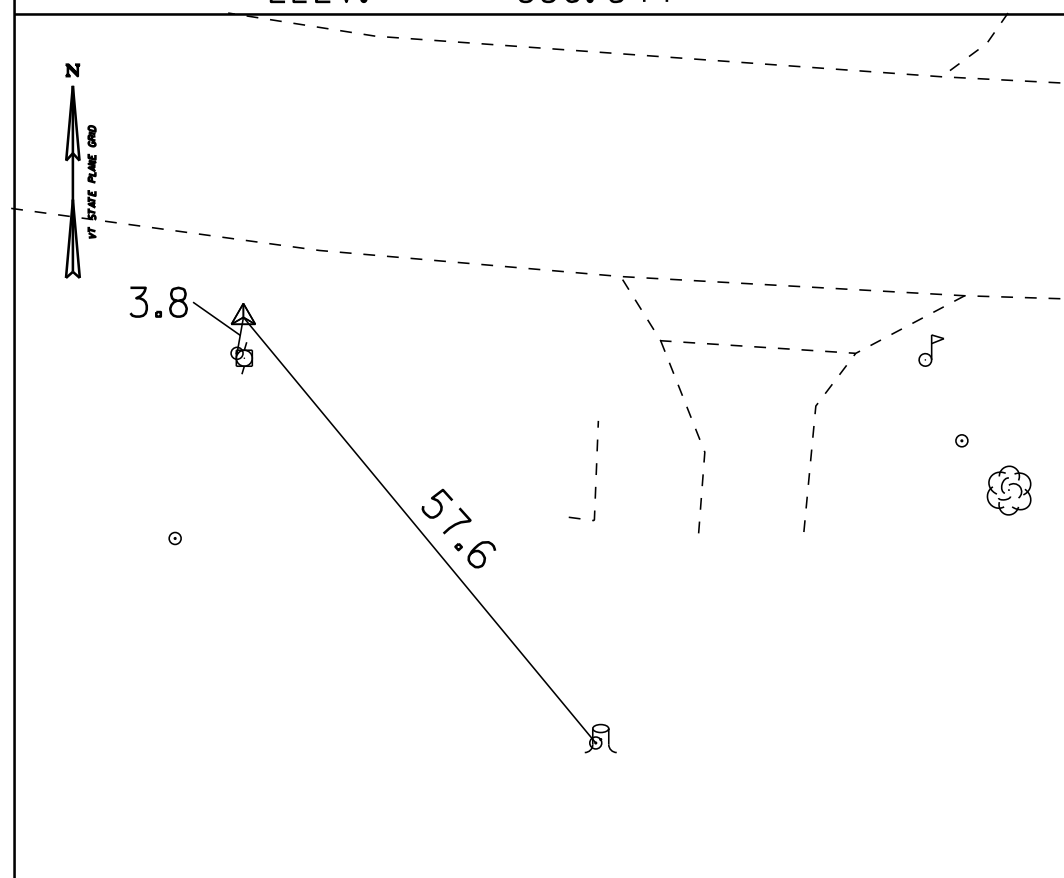
HVCTRL #43

NORTH = 577659.349
 EAST = 1439406.074
 ELEV. = 336.932



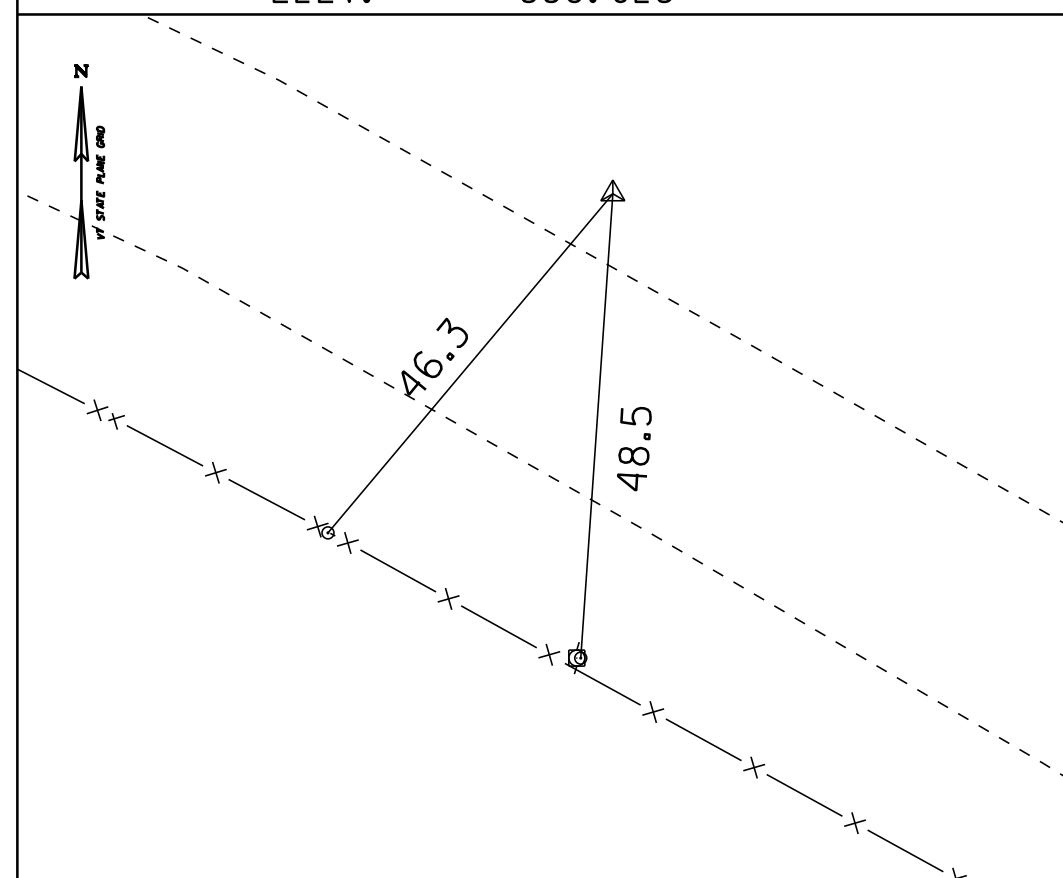
HVCTRL #44

NORTH = 577661.185
 EAST = 1438435.836
 ELEV. = 336.544



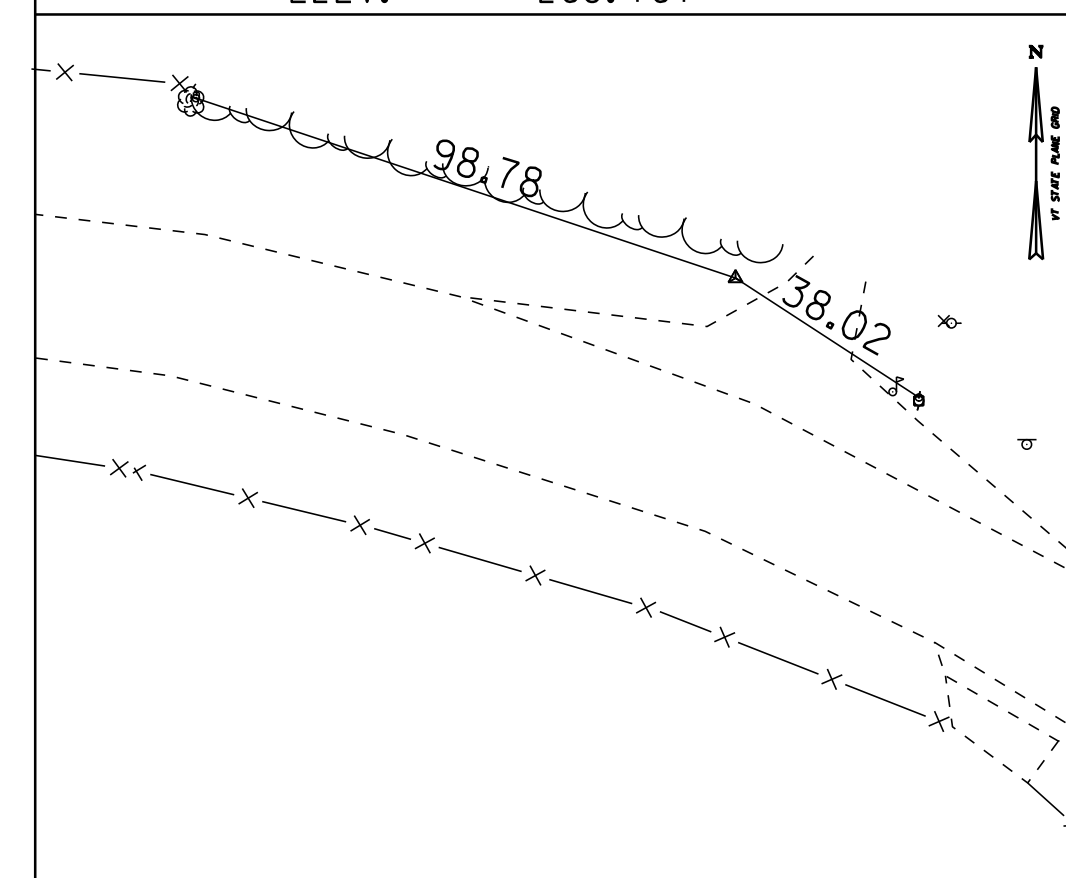
HVCTRL #45

NORTH = 577922.934
 EAST = 1437945.577
 ELEV. = 338.023



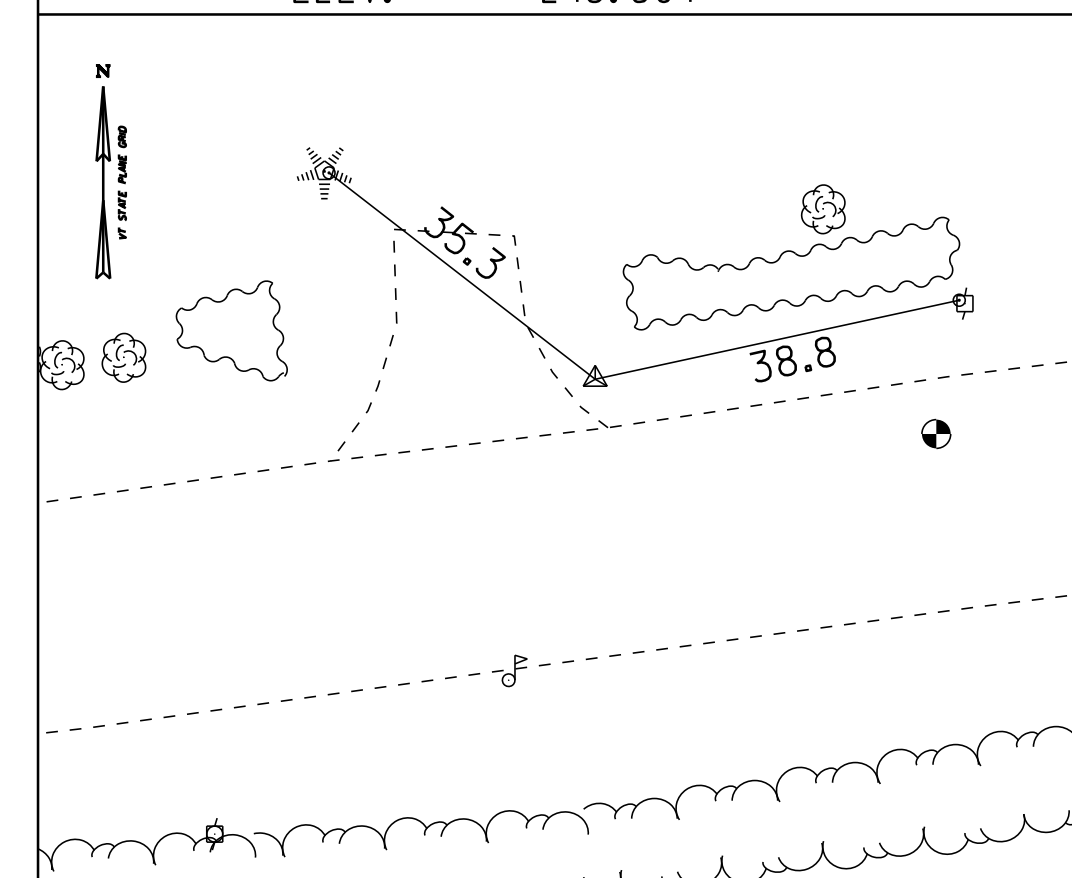
HVCTRL #47

NORTH = 578888.720
 EAST = 1436512.522
 ELEV. = 268.761



HVCTRL #48

NORTH = 578869.803
 EAST = 1435929.403
 ELEV. = 243.504

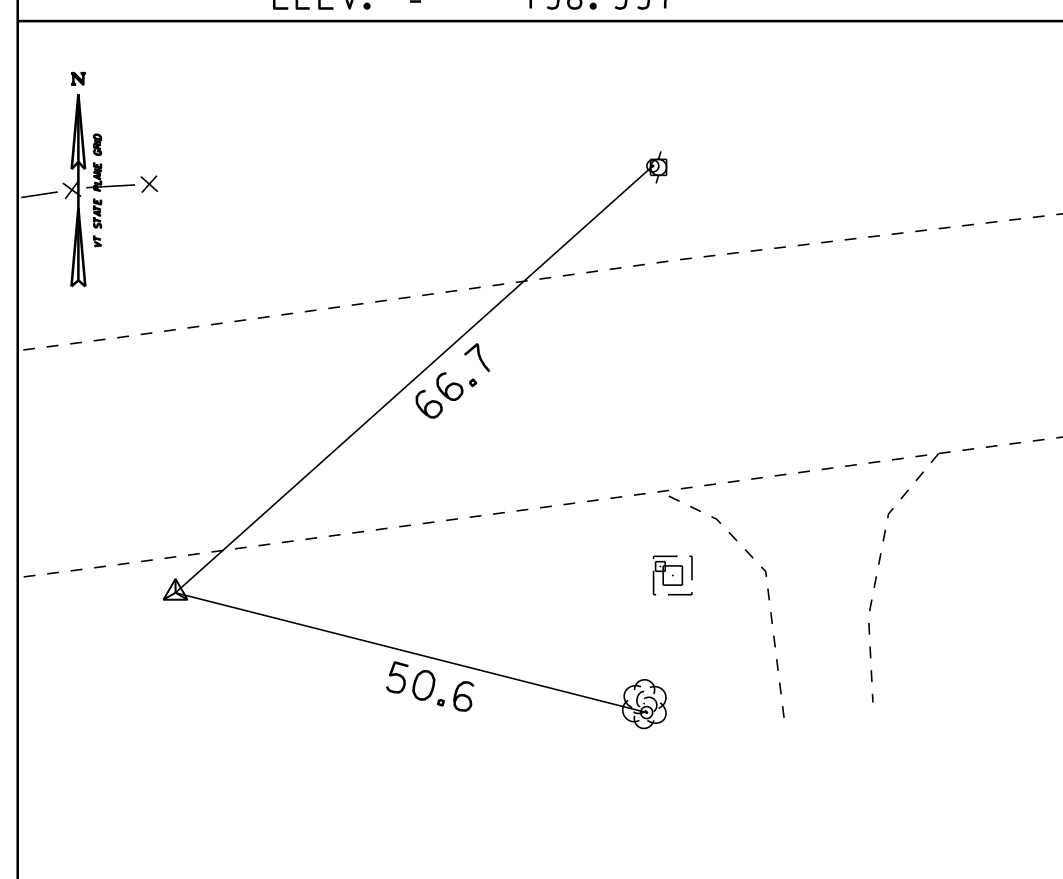


* MAIN TRAVERSE COMPLETED 06/09/10 by L.Orvis (P.C) & R.Bockus

TRAVERSE TIES

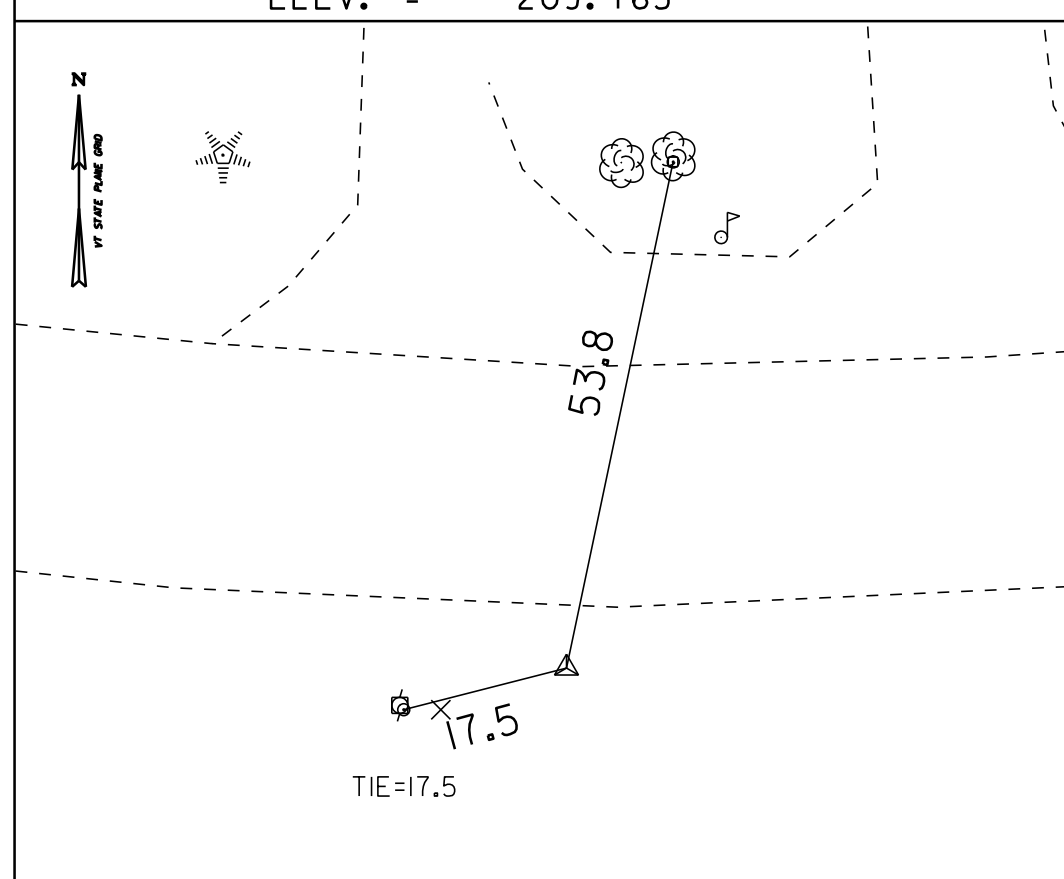
HVCTRL #49

NORTH = 578717.816
 EAST = 1435014.842
 ELEV. = 198.997



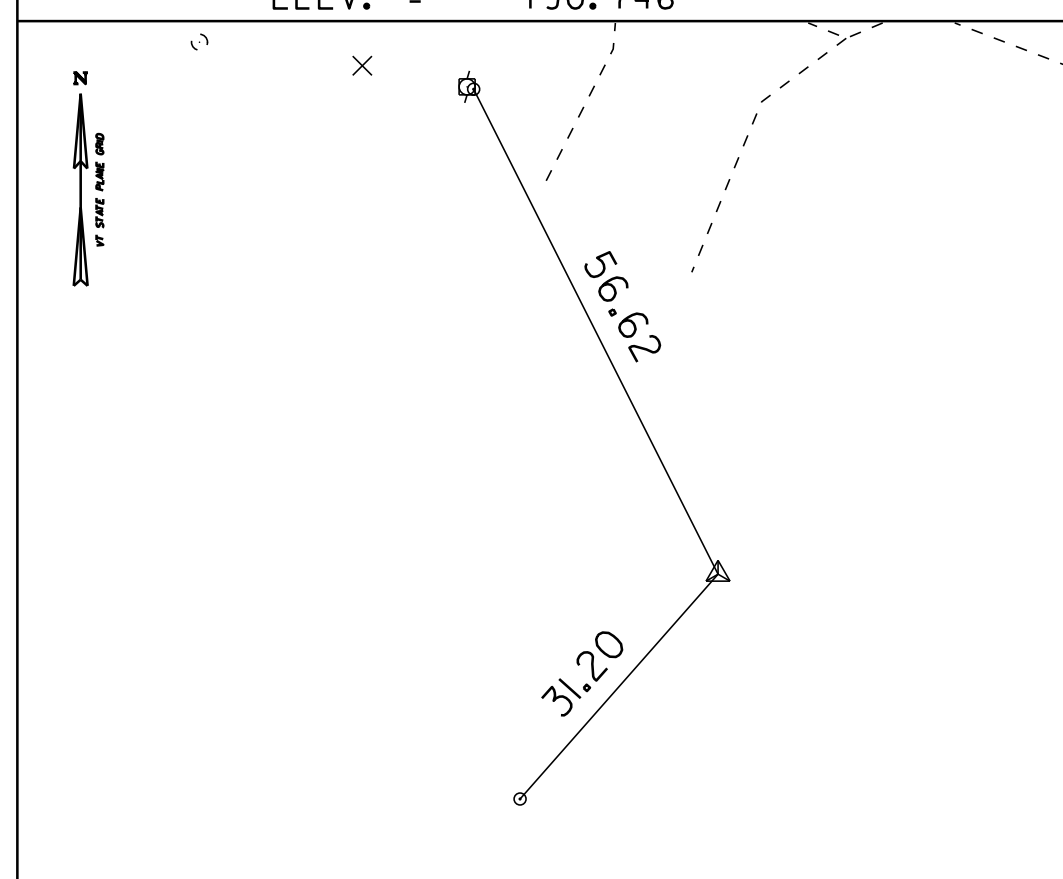
HVCTRL #50

NORTH = 578538.239
 EAST = 1433622.197
 ELEV. = 209.165



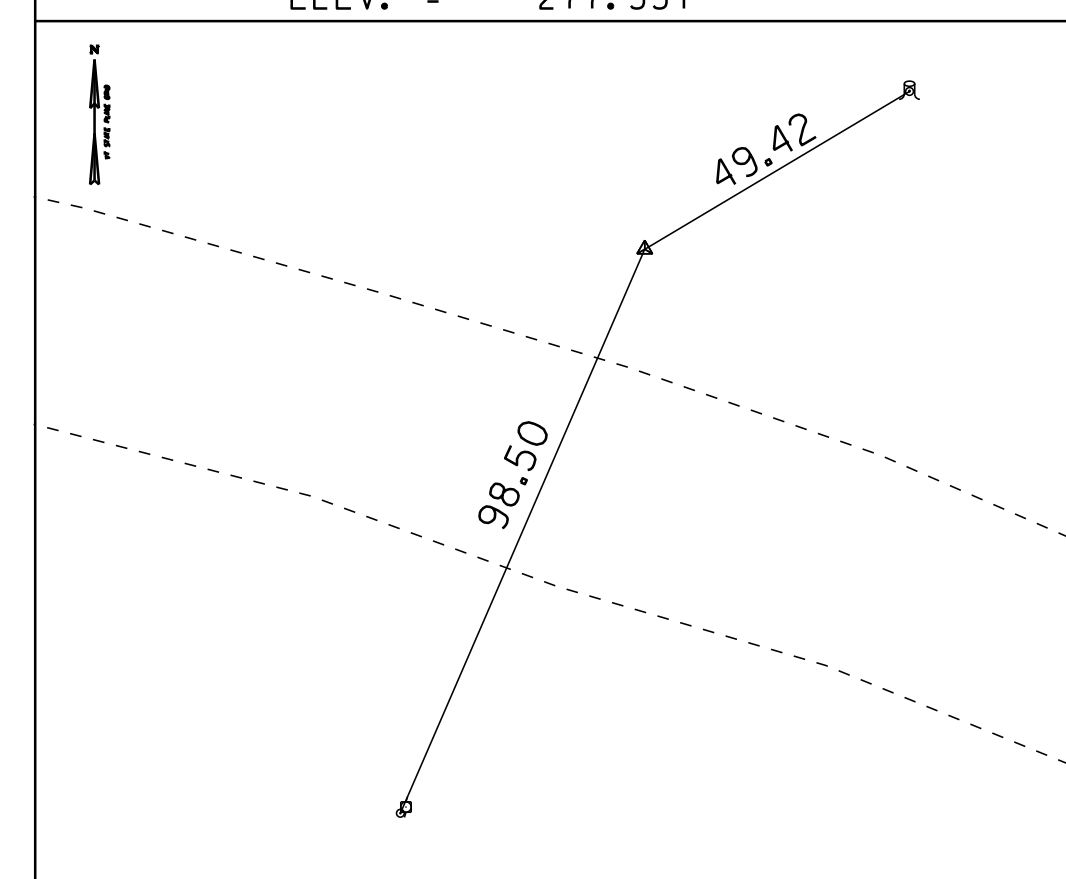
HVCTRL #52

NORTH = 579460.647
 EAST = 1431238.206
 ELEV. = 190.746



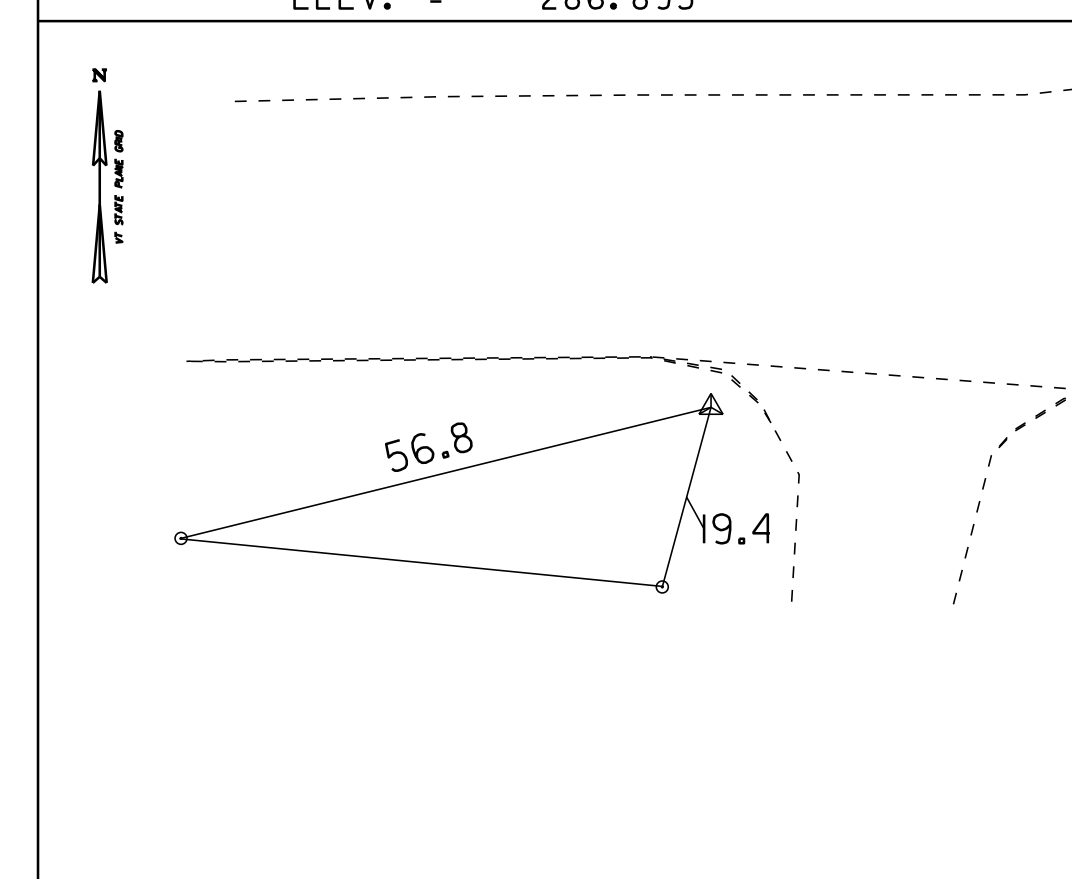
HVCTRL #53

NORTH = 580154.209
 EAST = 1429991.183
 ELEV. = 277.331



HVCTRL #54

NORTH = 580174.879
 EAST = 1429516.065
 ELEV. = 286.895



NOTE:
 SURVEY INFORMATION PROVIDED BY VTRANS SURVEY DEPARTMENT

DATUM
 NAVD 88
 NAD 83

TIE SHEET 3

PROJECT NAME: ADDISON - NEW HAVEN
 PROJECT NUMBER: STP 9632(1)

FILE NAME: p95B076.dgn PLOT DATE: 3/13/2012
 PROJECT LEADER: CDL DRAWN BY: R. BULLOCK
 DESIGNED BY: SJL CHECKED BY: EPD
 PLOT FILE: p95B076_23.1 SHEET 23 OF 186