

GPS CONTROL POINTS

HVCTRL #1

A97011

NORTH = 589435.837
 EAST = 1462663.739
 ELEV. = 370.239

DESCRIBED BY VERMONT GEODETIC SURVEY 1997 (CHR) GENERAL LOCATION, NEW HAVEN, VT. OWNERSHIP, NELSONS SERVICE CENTER, INC., RR 1 BOX 118, NEW HAVEN, VT.05472. CONTACT MARK A.NELSON. PHONE 802-453-5091. TO REACH FROM THE INTERSECTION OF U.S.ROUTE 7 AND VT ROUTE 17 EAST IN NEW HAVEN JUNCTION GO SOUTH ALONG U.S.ROUTE 7 FOR 0.5 MI (0.8 KM) TO THE INTERSECTION OF A GRAVEL DRIVE RIGHT LEADING TO NELSONS SERVICE CENTER. TURN RIGHT AND GO WEST ALONG THE GRAVEL DRIVE FOR ABOUT 50 M (164.0 FT) TO THE SERVICE CENTER AND SITE OF MARK ON A GRASSY KNOLL SOUTH OF THE BUILDING. THE MARK IS SET FLUSH WITH GROUND SURFACE IN THE TOP OF A DEEPLY IMBEDDED 3.3 M (10.8 FT) X 1.0 M (3.3 FT) EXPOSED IRREGULAR MASS OF CONCRETE. IT IS 51.7 M (169.6 FT) WEST OF AND ABOUT 3 M (9.8 FT) HIGHER THAN THE WEST EDGE OF PAVEMENT OF U.S.ROUTE 7, 23.7 M (77.8 FT) SOUTHEAST OF THE SOUTHEAST CORNER OF THE SERVICE STATION, 27.8 M (91.2 FT) NORTHWEST OF THE NORTHWEST CORNER OF A MOBILE HOME, 1.0 M (3.3 FT) WEST OF A NORTH-SOUTH WOVEN WIRE FENCE, AND 16.9 M (55.4 FT) SOUTHWEST OF POLE NO.4 AND A FIBERGLASS WITNESS POST. NOTE, MARK IS INTERVISIBLE WITH MARK A97010.

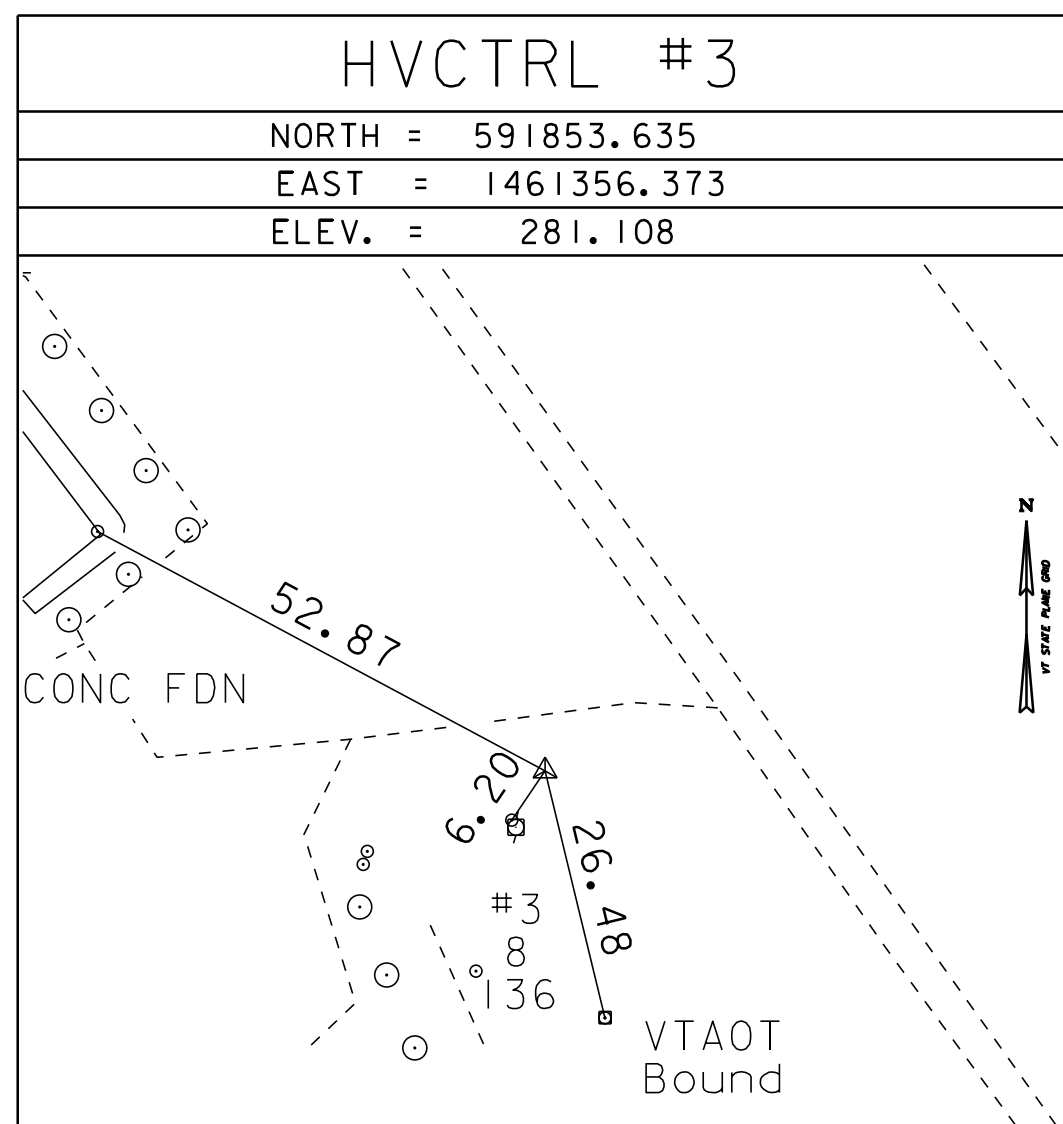
HVCTRL #2

A97010

NORTH = 591974.904
 EAST = 1461715.899
 ELEV. = 284.366

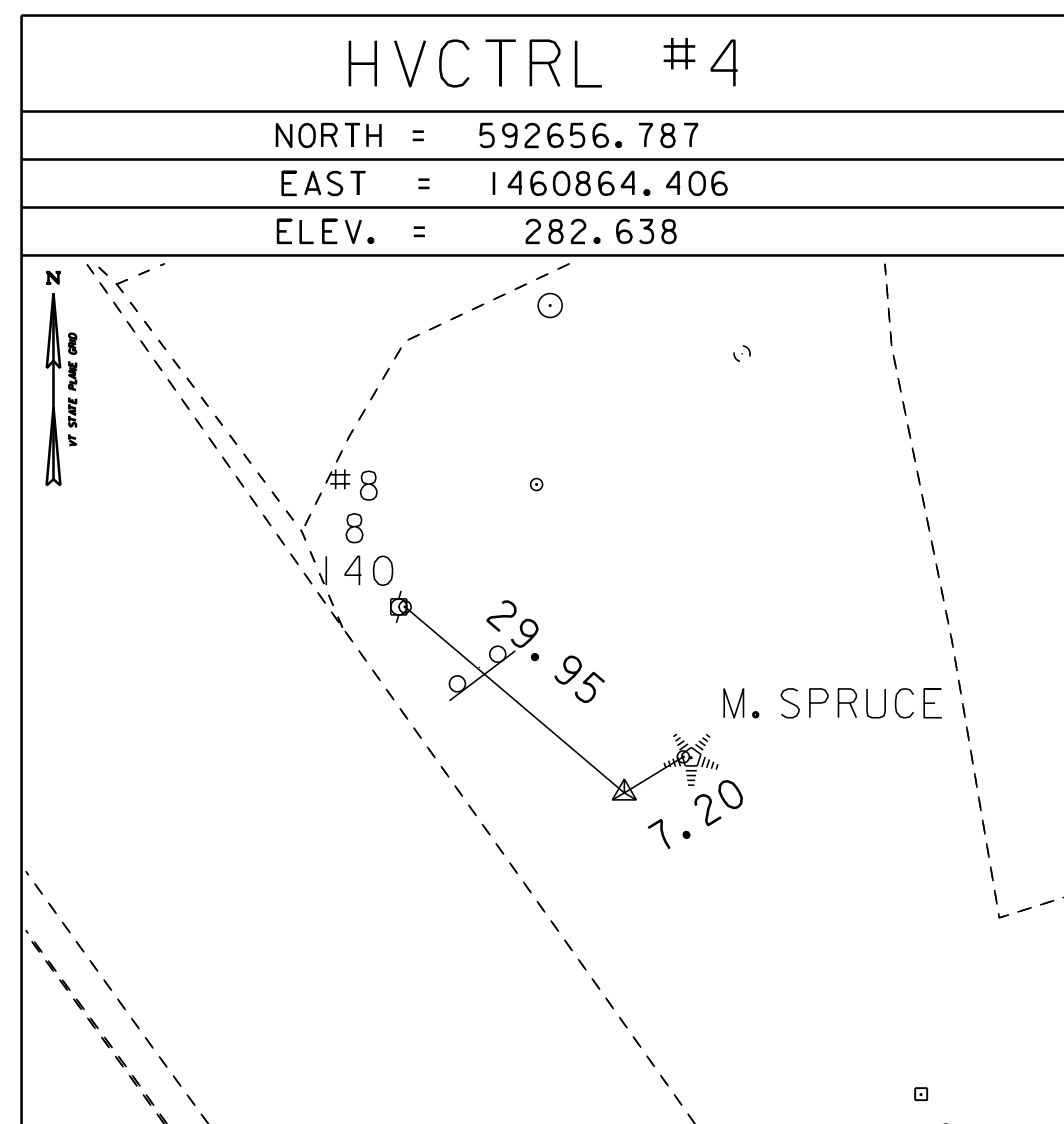
DESCRIBED BY VERMONT GEODETIC SURVEY 1997 (CHR) GENERAL LOCATION, NEW HAVEN, VT. OWNERSHIP, CECIL AND RAMONA MORSE, P.O.BOX 93, NEW HAVEN, VT.05472. PHONE 802-388-2641. TO REACH FROM THE INTERSECTION OF VT ROUTE 17 EAST AND U.S.ROUTE 7 IN NEW HAVEN JUNCTION GO EAST ALONG VT ROUTE 17 FOR 0.05 MI (0.08 KM) TO THE NEW HAVEN POST OFFICE AND THE MARK ON THE LEFT IN A GRASS ISLAND BETWEEN THE PAVED PARKING LOT FOR THE POST OFFICE AND VT ROUTE 17. THE MARK IS SET FLUSH WITH GROUND SURFACE IN THE TOP OF A 30 CM DIAMETER CONCRETE MONUMENT Poured 1.4 M (4.6 FT) DEEP. IT IS 8.3 M (27.2 FT) NORTH OF AND ABOUT LEVEL WITH THE CENTERLINE OF VT ROUTE 17, 1.6 M (5.2 FT) SOUTH OF THE SOUTH EDGE OF THE PAVED PARKING LOT, 18.0 M (59.1 FT) SOUTHWEST OF THE SOUTHWEST CORNER OF THE POST OFFICE, 18.5 M (60.7 FT) SOUTHWEST OF THE SOUTHWEST CORNER OF THE POST OFFICE, AND 27.3 M (89.6 FT) NORTHEAST OF POLE NO.136B/136/128/134. NOTE, MARK IS INTERVISIBLE WITH MARK A97011.

TRAVERSE TIES



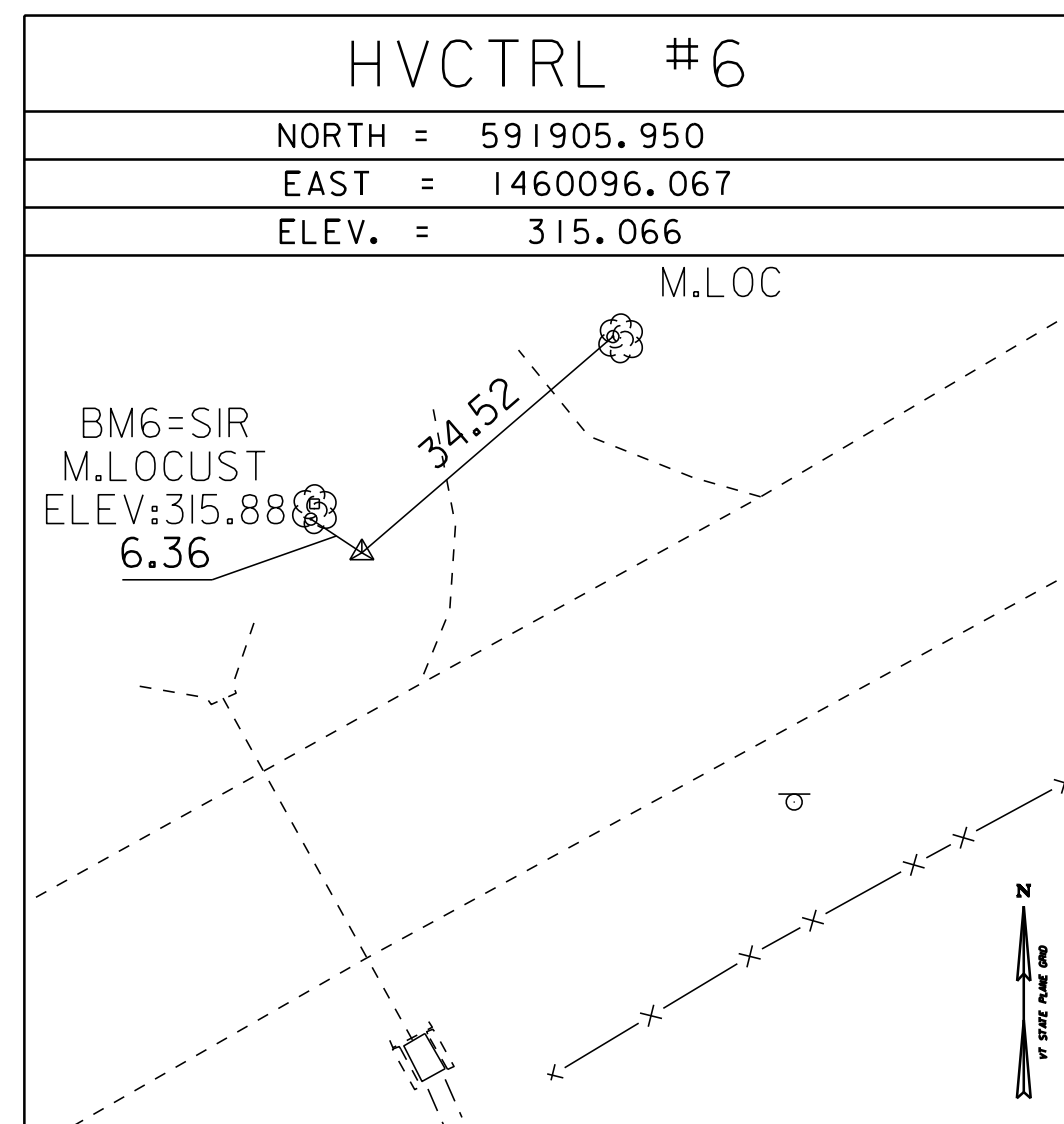
HVCTRL #3

NORTH = 591853.635
 EAST = 1461356.373
 ELEV. = 281.108



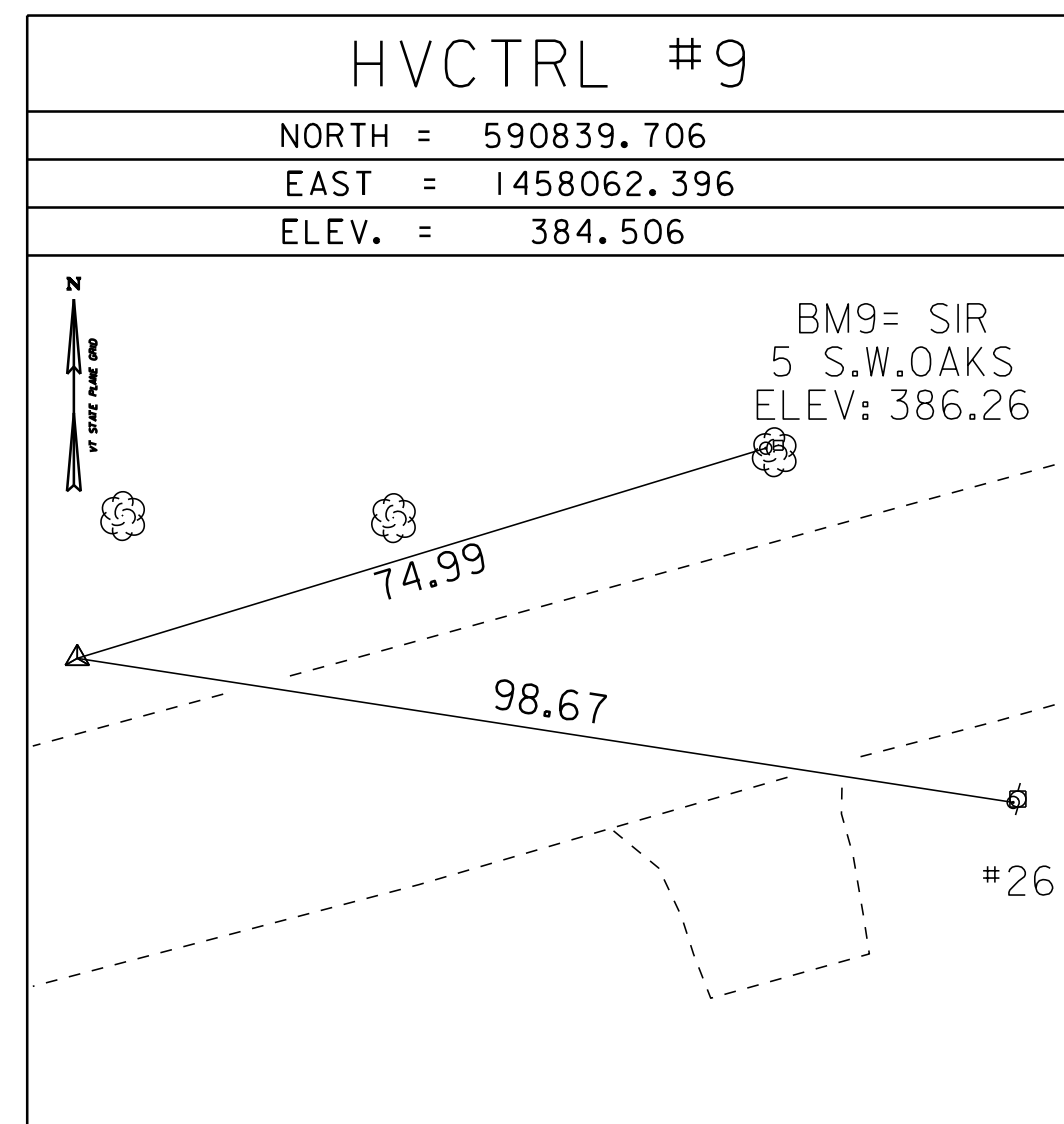
HVCTRL #4

NORTH = 592656.787
 EAST = 1460864.406
 ELEV. = 282.638



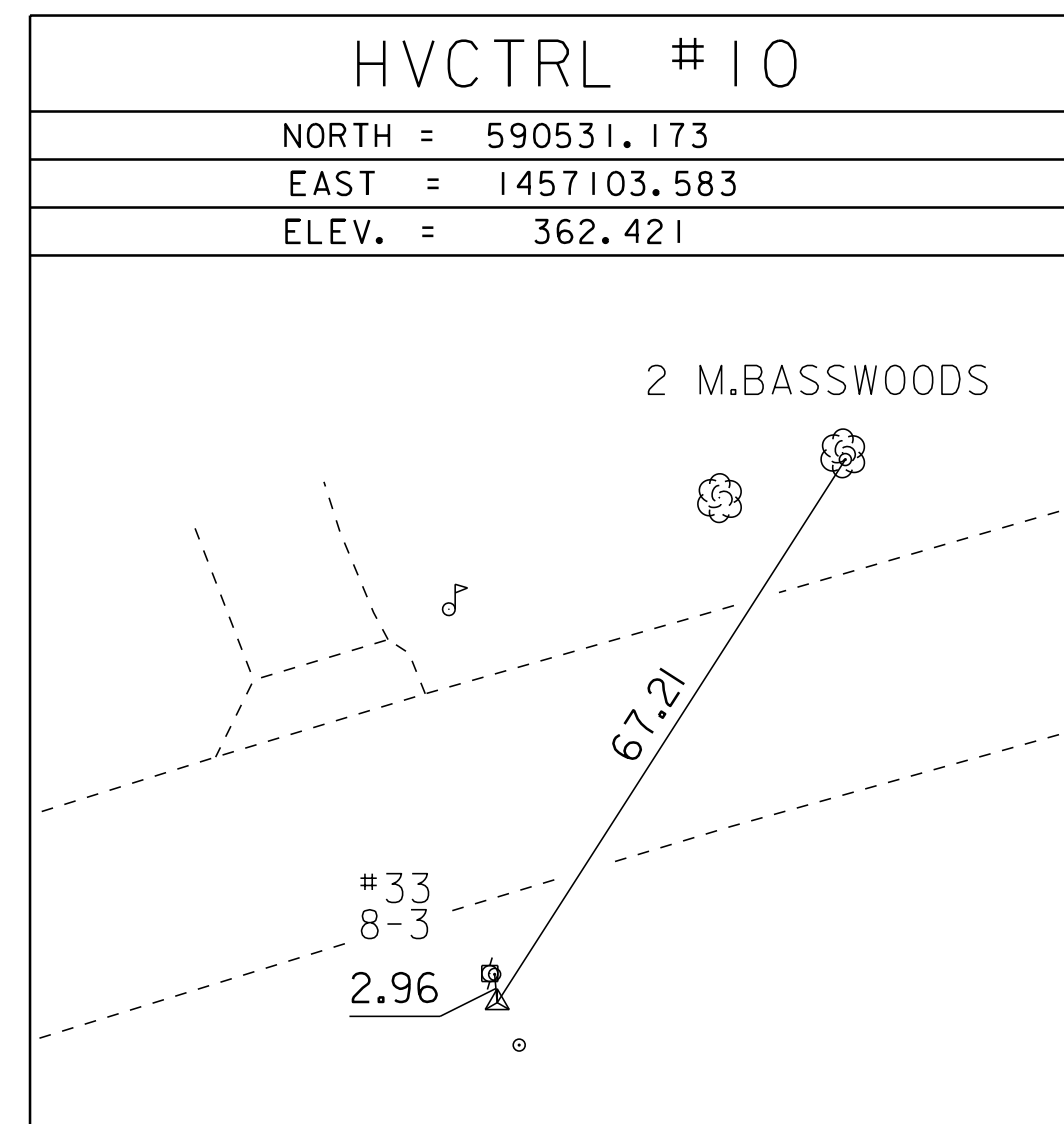
HVCTRL #6

NORTH = 591905.950
 EAST = 1460096.067
 ELEV. = 315.066



HVCTRL #9

NORTH = 590839.706
 EAST = 1458062.396
 ELEV. = 384.506

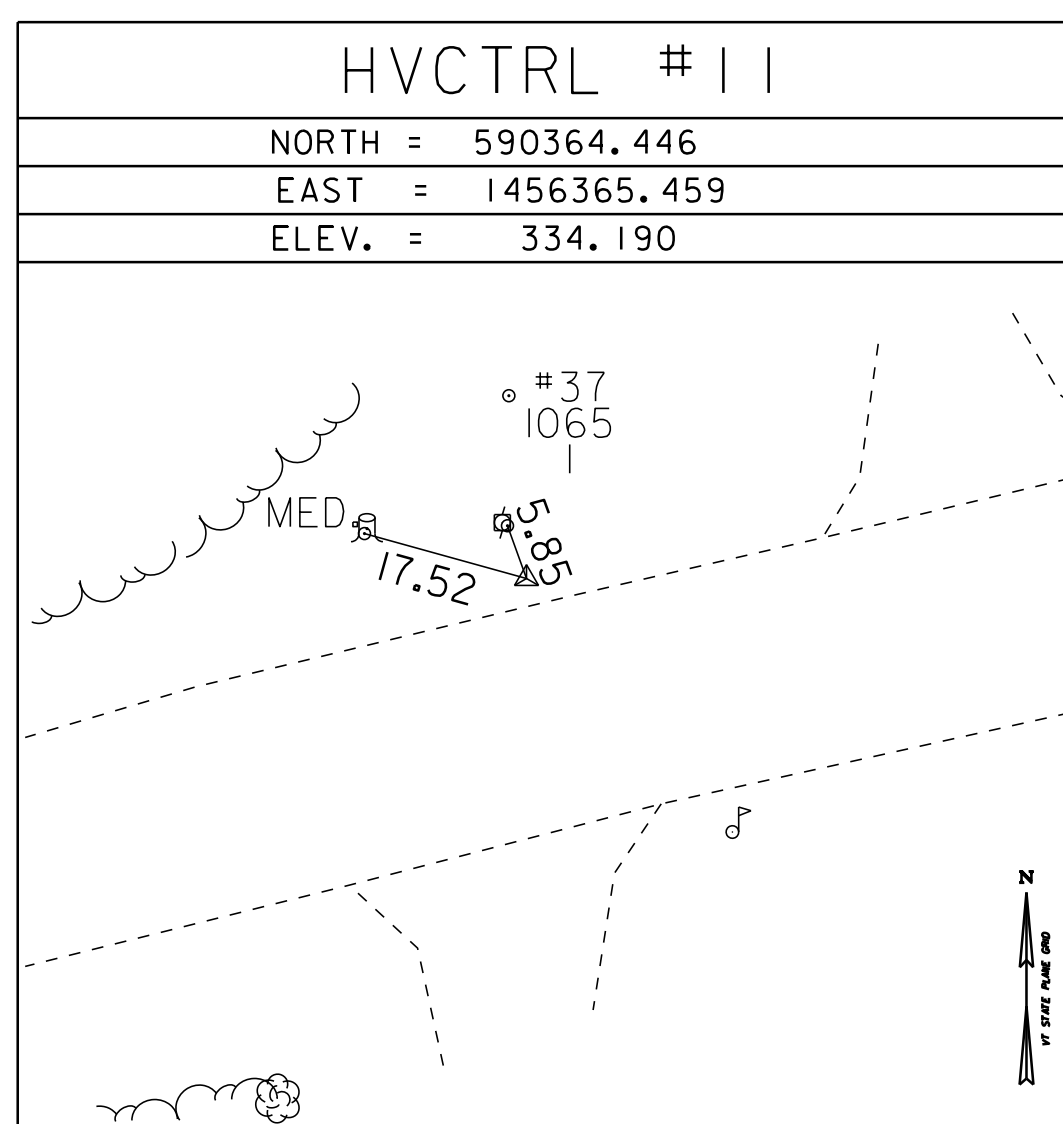


HVCTRL #10

NORTH = 590531.173
 EAST = 1457103.583
 ELEV. = 362.421

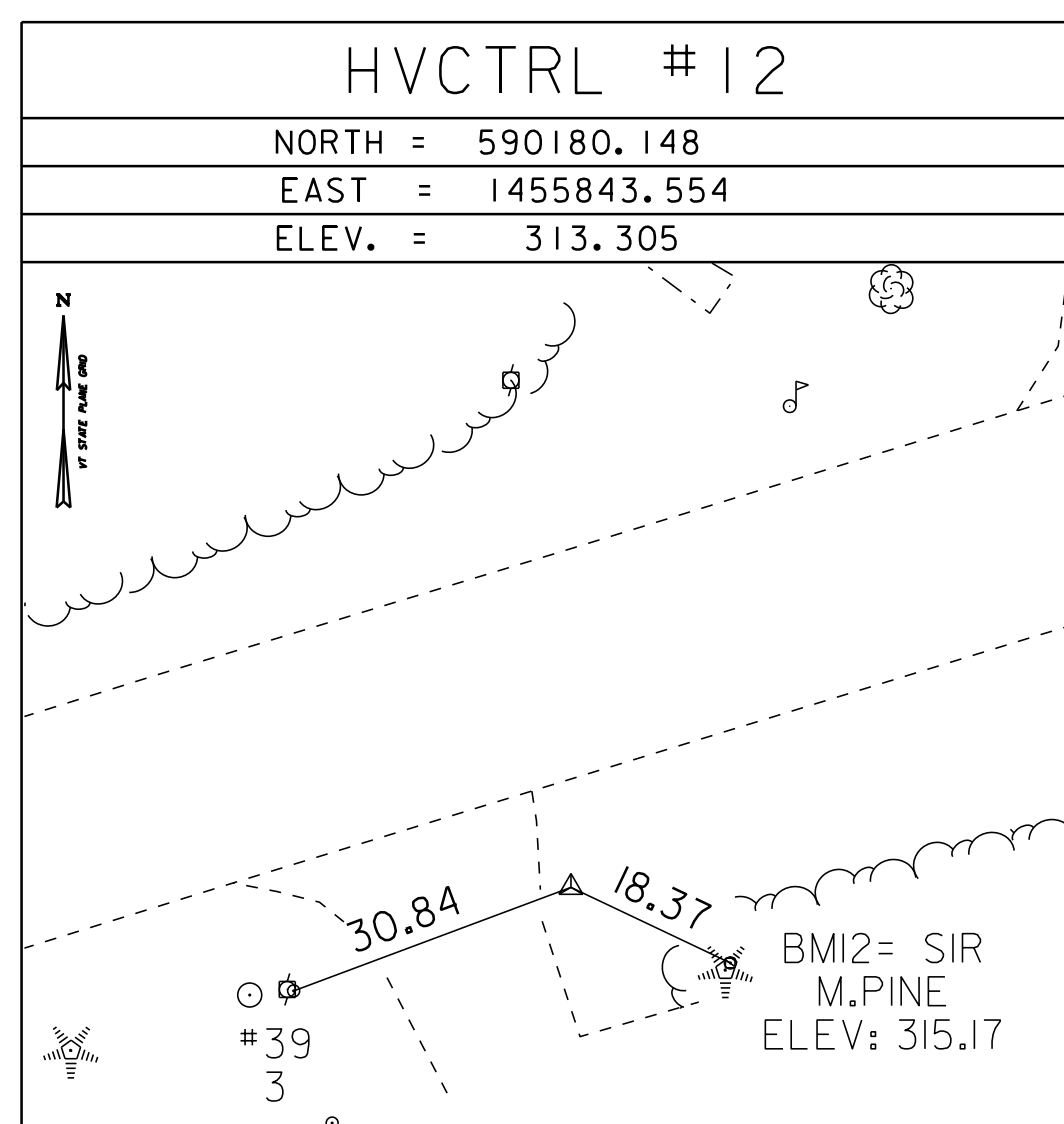
* Main Traverse Completed 06/09/10 by L.Orvis P.C. & R.Bokus

TRAVERSE TIES



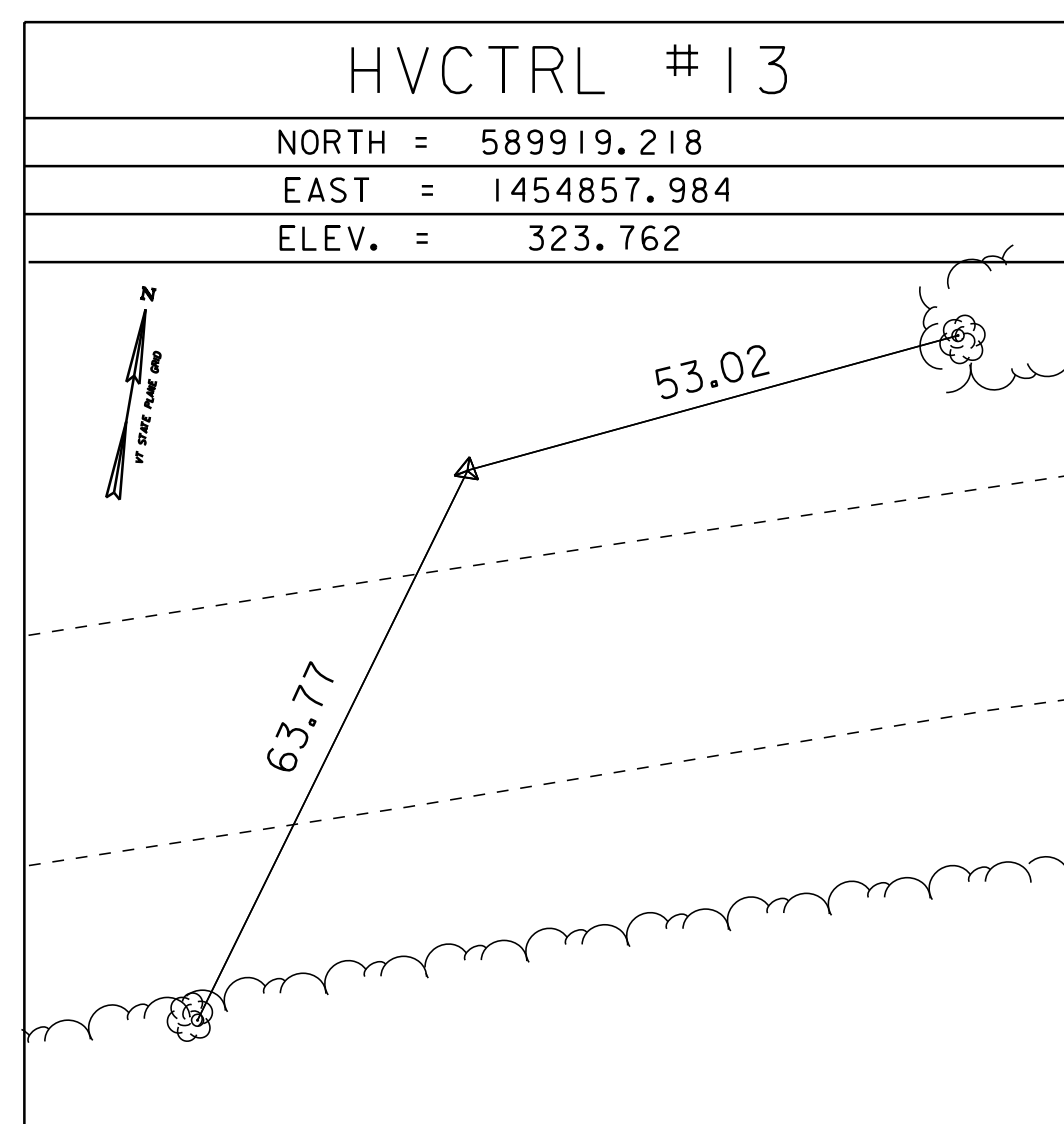
HVCTRL #11

NORTH = 590364.446
 EAST = 1456365.459
 ELEV. = 334.190



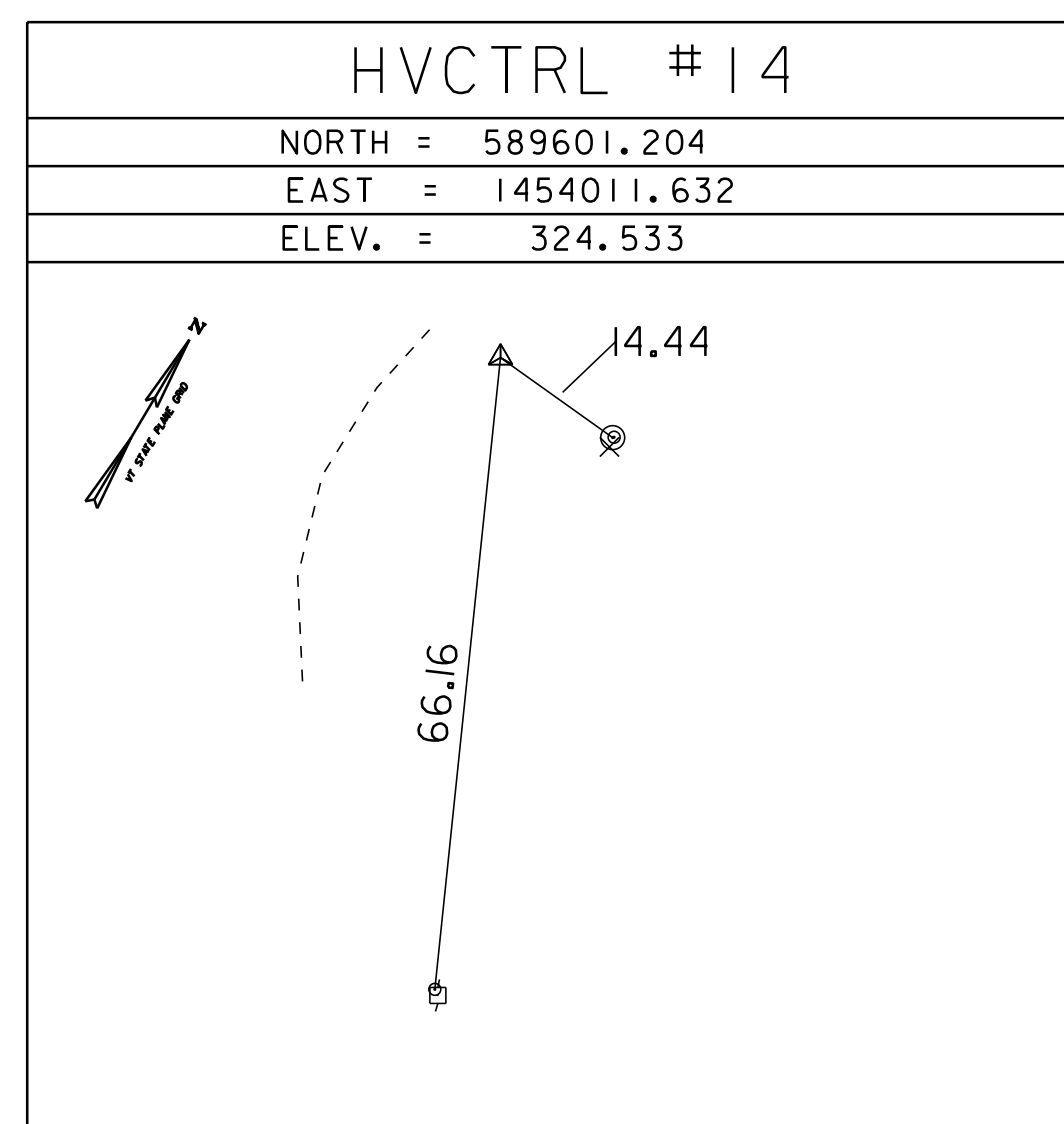
HVCTRL #12

NORTH = 590180.148
 EAST = 1455843.554
 ELEV. = 313.305



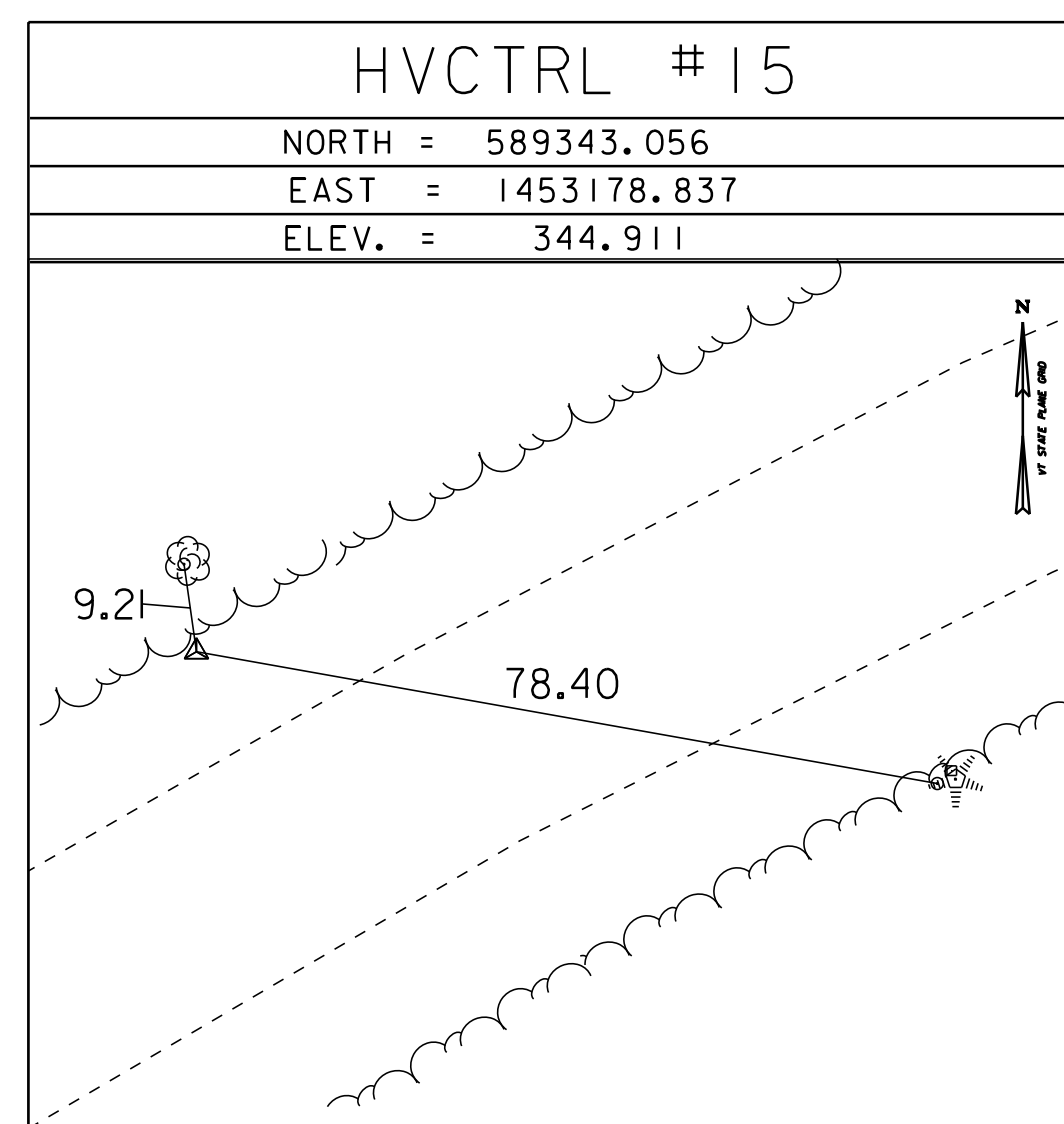
HVCTRL #13

NORTH = 589919.218
 EAST = 1454857.984
 ELEV. = 323.762



HVCTRL #14

NORTH = 589601.204
 EAST = 1454011.632
 ELEV. = 324.533



HVCTRL #15

NORTH = 589343.056
 EAST = 1453178.837
 ELEV. = 344.911

DATUM
 NAVD 88
 NAD 83

NOTE:
 SURVEY INFORMATION PROVIDED BY VTRANS SURVEY DEPARTMENT

TIE SHEET 1

PROJECT NAME: ADDISON - NEW HAVEN

PROJECT NUMBER: STP 9632(1)

FILE NAME: p95B076.dgn
 PROJECT LEADER: CDL
 DESIGNED BY: SJL
 PLOT FILE: p95B076_21.i

PLOT DATE: 3/13/2012
 DRAWN BY: R.BULLOCK
 CHECKED BY: EPD
 SHEET 21 OF 186