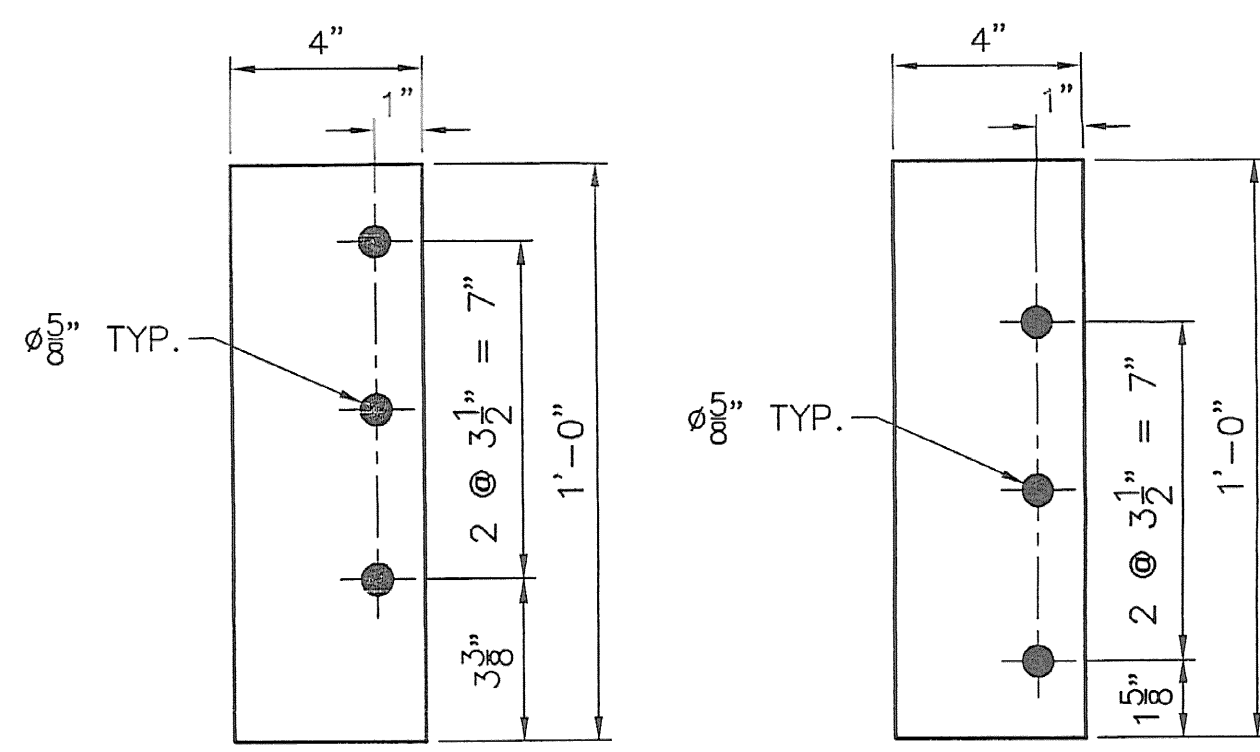


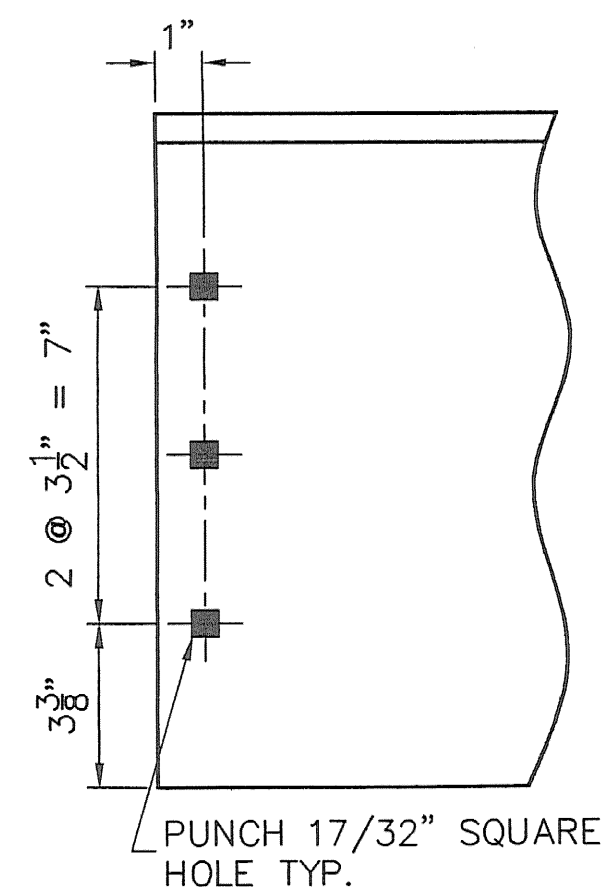
BOLTED FIELD SPLICE DETAIL

SHOP WELD (fo) & (fb) TO
6A, 5B, 4A, 3B, 2A & 1B



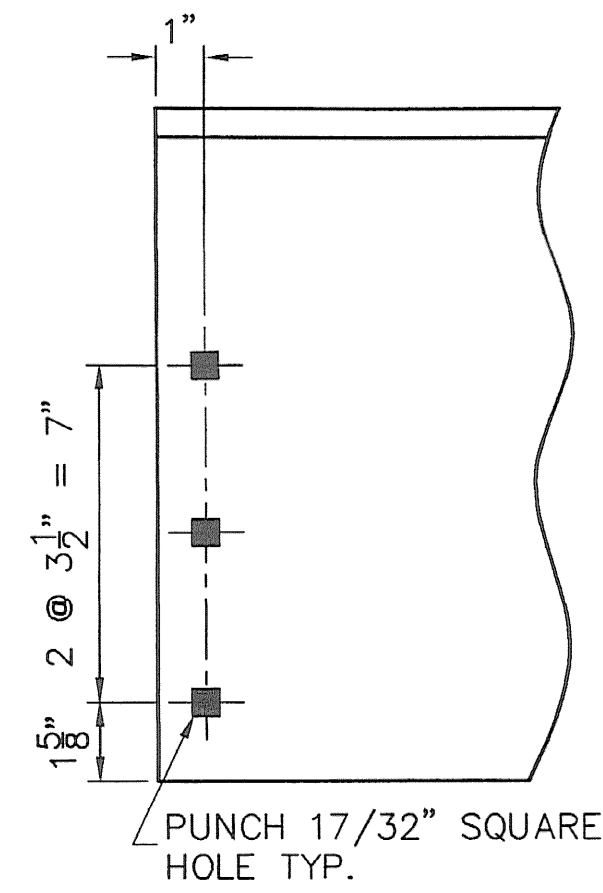
DETAIL (fb)

DETAIL (fbb)



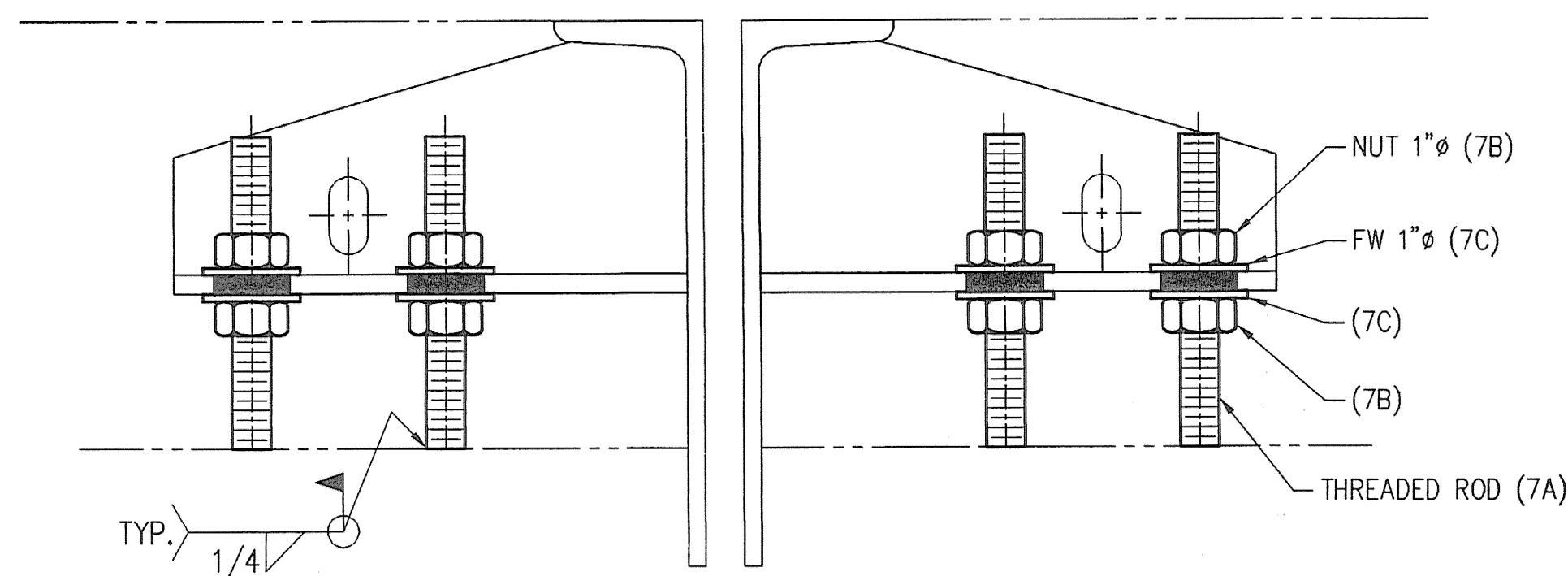
END PREP FOR BOLTED FIELD SPLICE DETAIL

PREP THE ENDS OF (xc1), (xc2), (xc3), (xc4), (xc5) & (xc6)



END PREP FOR BOLTED FIELD SPLICE DETAIL

PREP THE ENDS OF (xd1), (xd2), (xd3), (xd4), (xd5) & (xd6)



TYPICAL SECTION OF JOINT @ GIRDER

GENERAL NOTES:

- 1) ALL MATERIALS AND CONSTRUCTION SHALL CONFORM TO "STATE OF VERMONT, AGENCY OF TRANSPORTATION STANDARD SPECIFICATIONS FOR HIGHWAY AND BRIDGE CONSTRUCTION" DATED 1990, ITS LATEST REVISIONS AND THE SPECIAL PROVISIONS.
- 2) STEEL SHALL CONFORM TO AASHTO M270 GRADE 36, U.N.O. STEEL SHALL BE GALVANIZED PER SECTION 506.15(c) OF THE GENERAL SPECIAL PROVISIONS AND ASTM A123.
- 3) WELDING SHALL MEET THE REQUIREMENTS OF THE ANSI/AASHTO/AWS D 1.5 BRIDGE WELDING CODE AS MODIFIED BY STANDARD SPECIFICATIONS.
- 4) ALL STUD ANCHORS SHALL CONFORM TO AASHTO M169 (ASTM-A108 GRADES 1010 TO 1020) STEEL. ALL STUD ANCHORS TO BE ELECTRIC ARC END-WELDED WITH COMPLETE FUSION. STUDS AND STUD WELDING SHALL CONFORM TO SECTION 7 OF THE ANSI/AASHTO/AWS D1.5-95 BRIDGE WELDING CODE. REPAIR WELD STUDS USING FF-STUD-REP-01 OR SM-STUD-REP-01.
- 5) ALL HARDWARE TO BE GALVANIZED PER ASTM A153.
- 6) PRIOR TO GALVANIZING, ALL CORNERS AND EDGES OF STEEL PLATES, SHAPES, ETC., SHALL BE GROUND TO A 1/16" RADIUS PER SECTION 506.14(c).
- 7) ANY GALVANIZED COATING DAMAGED DURING FIELD WELDING OR FROM OTHER CAUSES MUST BE REPAIRED IN ACCORDANCE WITH ASTM-A780.
- 8) DS BROWN IS TO SUPPLY ONLY THE PARTS SHOWN ON THESE DRAWINGS. ALL OTHER MATERIALS TO BE PROVIDED BY OTHERS.
- 9) JOINTS SHALL BE SHOP ASSEMBLED AND BANDED PRIOR TO SHIPPING. JOINTS SHALL BE SHIPPED IN PAIRS.
- 10) SHOP INSPECTION BY VAOT.

LINE NO. REQ'D.	DESCRIPTION	LENGTH	MK	REMARKS	WGHT.
1	288 THREADED ROD		7A	HDG	
2	288 RB 1 CONT THRD	0'-8"	7A		1.27
3					
4	FIELD BOLTS :				
5	588 HN 1 HVY A563DH HDG		7B	576	25=66
6	588 FW 1 F436 HDG		7C	576	27=15
7	37 MB 1/2 x 1 1/2 CARRIAGE		7D	36	
8	37 HN 1/2 HVY A563DH HDG		7F	36	25=3
9	37 FW 1/2 F436 HDG		7G	36	27=3
10					
11					
12					
13					
14					
15					
16					
17					
18					
19					
20					
21					
22					
23					
24					
25					
26					
27					
28					
29					
30					
31					
32					
33					
34					
35					
36					
37					
38					

SHOP DRAWING REVIEW

REVIEWED AS REQUIRED BY THE CONSTRUCTION CONTRACT DOCUMENTS AND APPROVED, BUT ONLY FOR CONFORMANCE TO THE REQUIREMENTS OF THE WORK AND NOT FOR THE DESIGN LIMITATIONS AND MODIFICATIONS CAPTIONED IN THE CONTRACT DOCUMENTS.

REASON: REVISION AND RESUBMIT REVISION AND RESUBMIT

CONTRACT NO. 98-01-0000
 REVIEWED BY: *ASR*
 DATE: 2/20/01

REV.	DESCRIPTION	DATE	BY
1	GENERAL REVISION PER APPROVAL.	1/22/01	SLB

ANY AND ALL BACKCHARGES WILL BE REJECTED UNLESS WRITTEN CONSENT IS GIVEN BY LEWIS ENGINEERING COMPANY PRIOR TO ANY WORK PERFORMED FOR OUR ACCOUNT. SUCH REJECTION MEANS THAT INVOICES WILL NOT BE HONORED OR DEDUCTIONS FROM PAYMENT WILL BE CHARGED BACK.

PRELIM	11/28/00
SHOP	
APPROVAL	11/28/00
DIST.	
CUST.	
FOR	DATE
PRINTS	ISSUED

LEWIS ENGINEERING COMPANY
 4201 NOREX DRIVE - CHASKA, MINNESOTA 55318 - (612) 368-3000

PROJECT - BRIDGE NO. 68 SOUTH BURLINGTON U.S. 2 OVER I-8
 STATE PROJECT - IM DECK (36)
 FEDERAL PROJECT -

CUSTOMER - J A McDONALD
 LOCATION - CHITTENDEN COUNTY, VERMONT
 DESCRIPTION - EXPANSION JOINT DETAILS

W.P. chk'd JUK
 Drawn By S
 Chk'd By Ad
 Date: 11/21/00

SHEET NO. 7 OF 8 Job. No. : 978.104.1