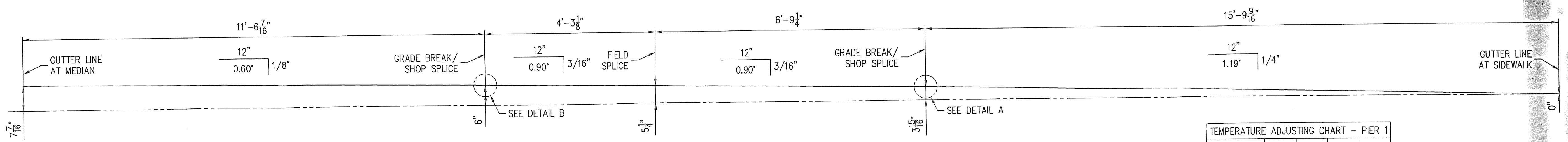


PLAN VIEW — EXPANSION JOINT
(PIER 1 — EASTBOUND)



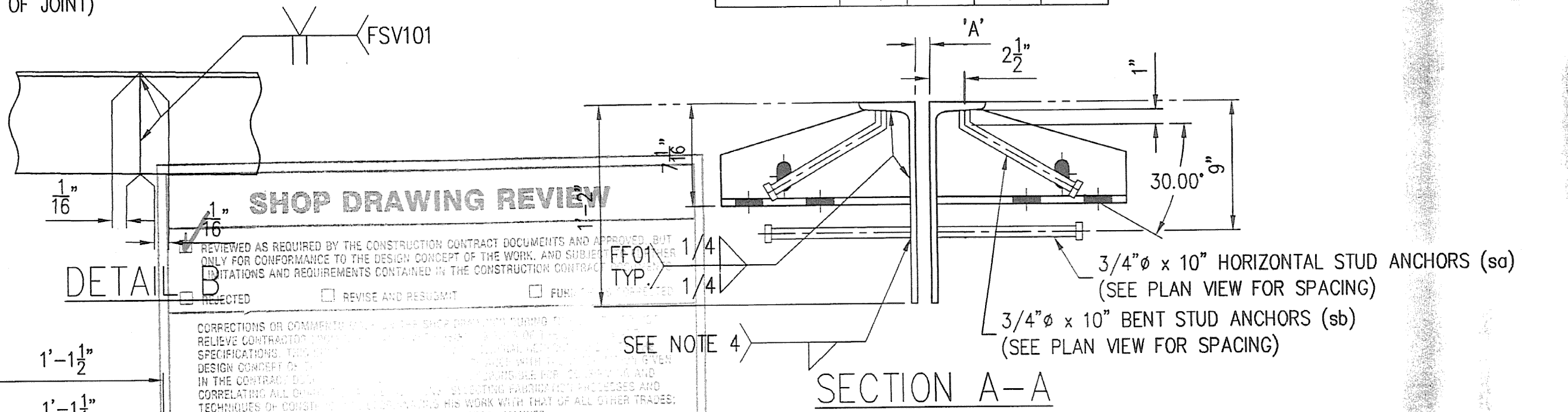
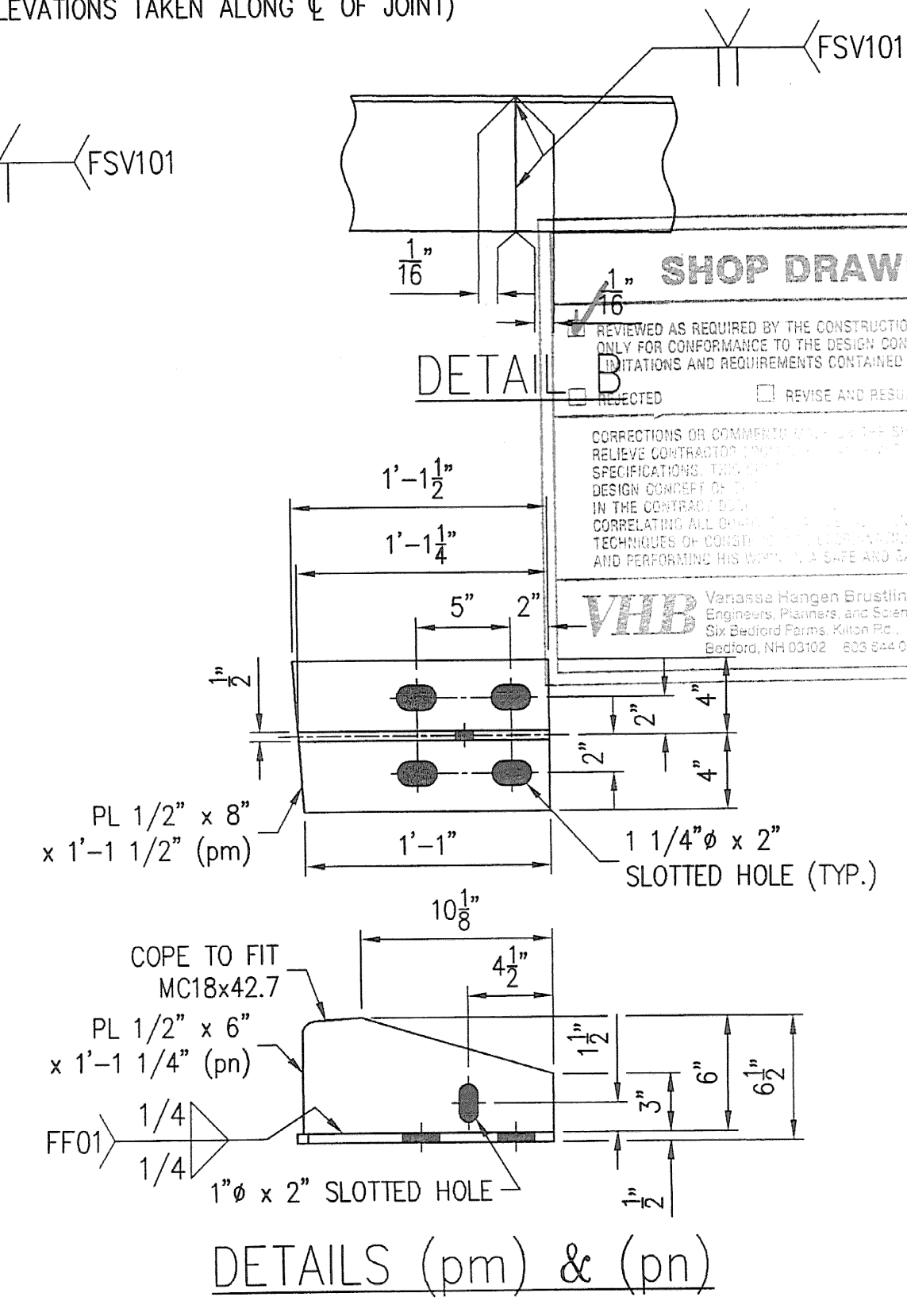
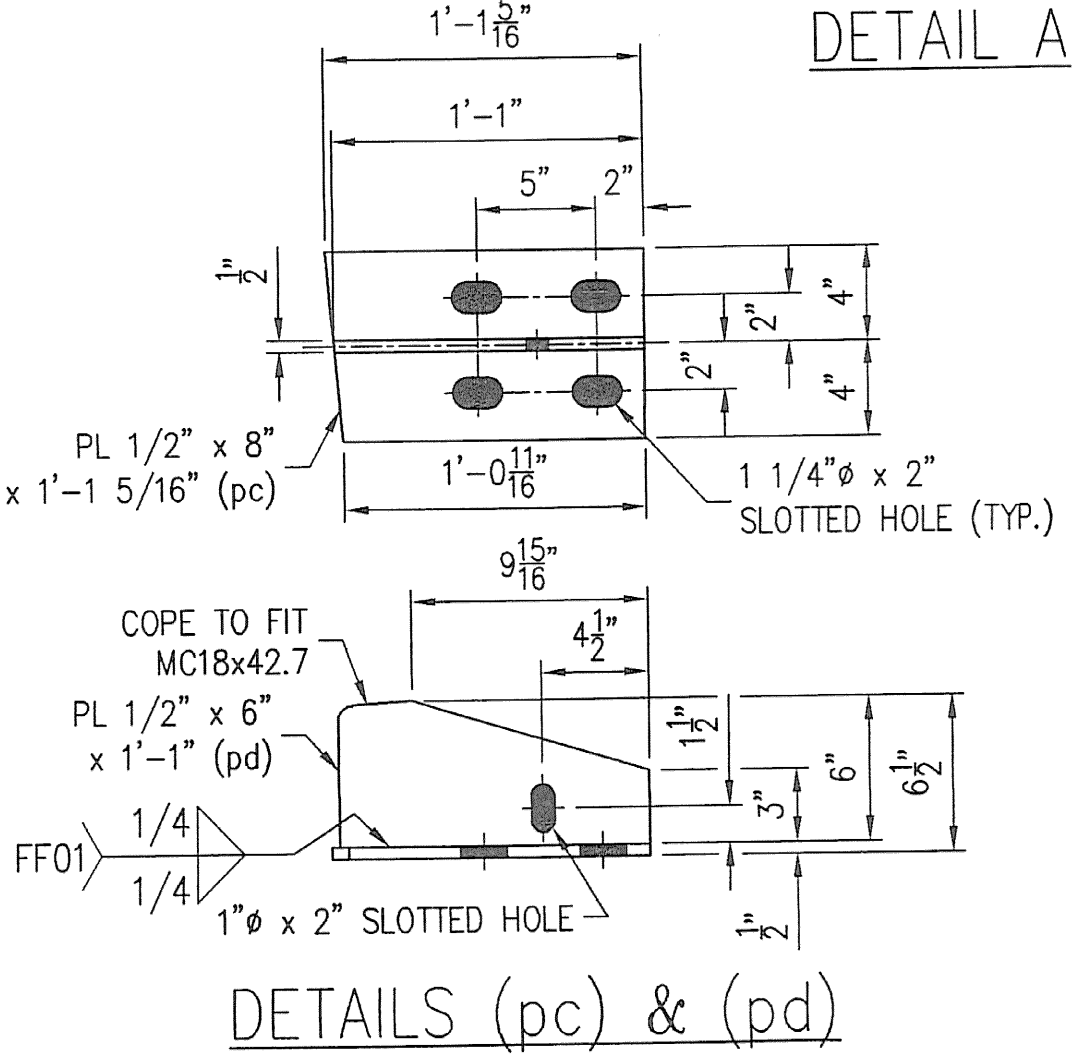
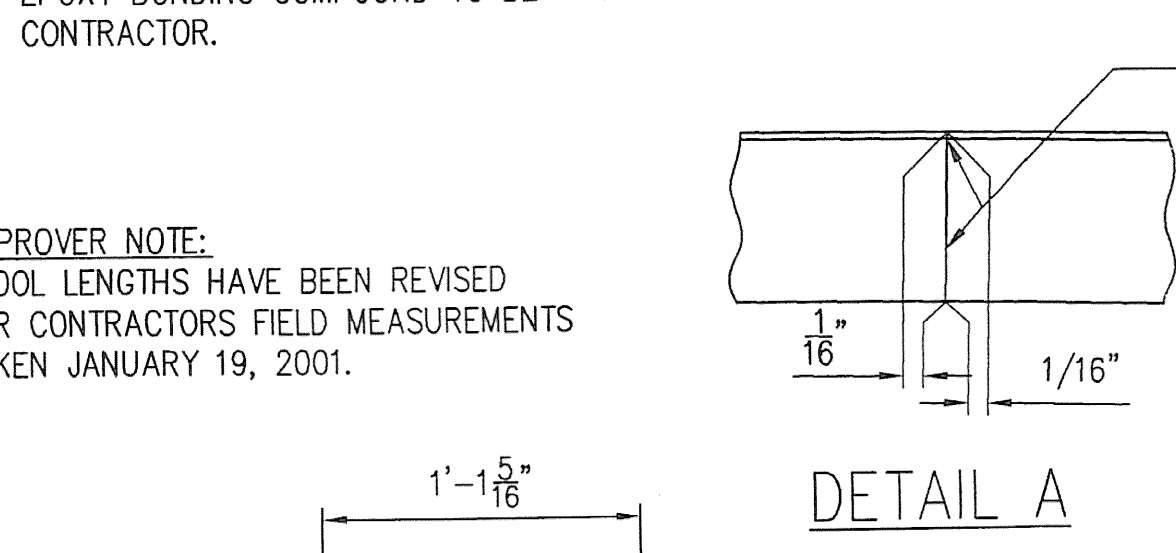
ELEVATION VIEW
(ELEVATIONS TAKEN ALONG C OF JOINT)

SEE SHEET 7 FOR GENERAL NOTES

CONTRACTOR NOTE:
ALL SURFACES OF STEEL DECK JOINTS WHICH ARE TO HAVE CONCRETE PLACED AGAINST THEM, SHALL BE COATED WITH EPOXY BONDING COMPOUND. EPOXY BONDING COMPOUND TO BE PROVIDED BY THE CONTRACTOR.

APPROVER NOTE:
STOOL LENGTHS HAVE BEEN REVISED PER CONTRACTORS FIELD MEASUREMENTS TAKEN JANUARY 19, 2001.

LINE NO.	NO. REQ'D.	DESCRIPTION	LENGTH	MK	REMARKS	WGHT.
1	1	EXPANSION JOINT ASS'Y		2A	HDG	
2	1	MC18x42.7	11'-6 3/8"	xc2	REMOVE FLANGE	11-8
3	1	MC18x42.7	11'-6 3/8"	xb2	REMOVE FLANGE	11-8
4	1	MC18x42.7	4'-3 1/2"	xc2	REMOVE FLANGE	11-8
5	1	MC18x42.7	4'-3 1/2"	xd2	REMOVE FLANGE	11-8
6	3	PL 1/2 x 8	1'-1 1/8"	pc	SHAPE CUT / COPE TO FIT MC18x42.7	19-16
7	3	PL 1/2 x 6	1'-1"	pd	SHAPE CUT	19-16
8	3	PL 1/2 x 8	1'-1 1/2"	pm	SHAPE CUT / COPE TO FIT MC18x42.7	19-16
9	3	PL 1/2 x 6	1'-1 1/4"	pn	SHAPE CUT	19-16
10	18	WS 3/4 x 10		sa	17 / BEND	29-19
11	18	WS 3/4 x 10		sb	17 / BEND	29-19
12	2	FB 1/4 x 2	0'-2"	fo		16-29
13	1	FB 1/4 x 4	1'-0"	fb		16-36
14	1	FB 1/4 x 4	1'-0"	fbb		16-36
15						
16						
17	1	EXPANSION JOINT ASS'Y		2B	HDG	
18	1	MC18x42.7	6'-9 3/8"	xf2	REMOVE FLANGE	11-8
19	1	MC18x42.7	6'-9 3/8"	xg2	REMOVE FLANGE	11-8
20	1	MC18x42.7	15'-9 15/16"	xh2	REMOVE FLANGE	11-8
21	1	MC18x42.7	15'-9 15/16"	xk2	REMOVE FLANGE	11-8
22	3	PL 1/2 x 8	1'-1 1/8"	pc	SHAPE CUT / COPE TO FIT MC18x42.7	19-16
23	3	PL 1/2 x 6	1'-1"	pd	SHAPE CUT	19-16
24	3	PL 1/2 x 8	1'-1 1/2"	pm	SHAPE CUT / COPE TO FIT MC18x42.7	19-16
25	3	PL 1/2 x 6	1'-1 1/4"	pn	SHAPE CUT	19-16
26	26	WS 3/4 x 10		sa	25	29-19
27	27	WS 3/4 x 10		sb	26 / BEND	29-19
28						
29						
30						
31						
32						
33						



SHOP DRAWING REVIEW

REVIEWED AS REQUIRED BY THE CONSTRUCTION CONTRACT DOCUMENTS AND APPROVED FOR THE CONTRACTOR'S USE ONLY FOR CONFORMANCE TO THE DESIGN CONCEPT OF THE WORK AND SUBJECT TO THE CONDITIONS AND REQUIREMENTS CONTAINED IN THE CONSTRUCTION CONTRACT DOCUMENTS.

REVISIONS: REVISE AND RESUBMIT FINISH

Yonasson Hangan Brattain, Inc.
Engineers, Planners, and Scientists
One Federal Plaza, 6th Floor
Boston, MA 02108 617-554-0888

Job Number: 50929
Reviewed By: ASR
Date: 2/21/01

PRELIM	11/28/00
SHOP	
APPROVAL	11/28/00
DIST.	
CUST.	
FOR	DATE
PRINTS ISSUED	

GENERAL REVISION PER APPROVAL. 1/22/01 SLJ

REV.	DESCRIPTION	DATE	BY

ANY AND ALL BACKCHARGES WILL BE REJECTED UNLESS WRITTEN CONSENT IS GIVEN BY LEWIS ENGINEERING COMPANY PRIOR TO ANY WORK PERFORMED FOR OUR ACCOUNT. SUCH REJECTION MEANS THAT INVOICES WILL NOT BE HONORED OR DEDUCTIONS FROM PAYMENT WILL BE CHARGED BACK.

LEWIS ENGINEERING COMPANY
4201 NOREX DRIVE — CHASKA, MINNESOTA 55318 — (612) 368-3000

PROJECT — BRIDGE NO. 68 SOUTH BURLINGTON U.S. 2 OVER I-89
STATE PROJECT — IM DECK (36)
FEDERAL PROJECT —

CUSTOMER — J A McDONALD
LOCATION — CHITTENDEN COUNTY, VERMONT
DESCRIPTION — EXPANSION JOINT DETAILS EASTBOUND AT PIER 1

W.P. chkd by JLC
Drawn By SLJ
Chkd. By AJC
Date: 11/21/00

SHEET NO. 2 OF 8 Job. No. : 978.1049.1