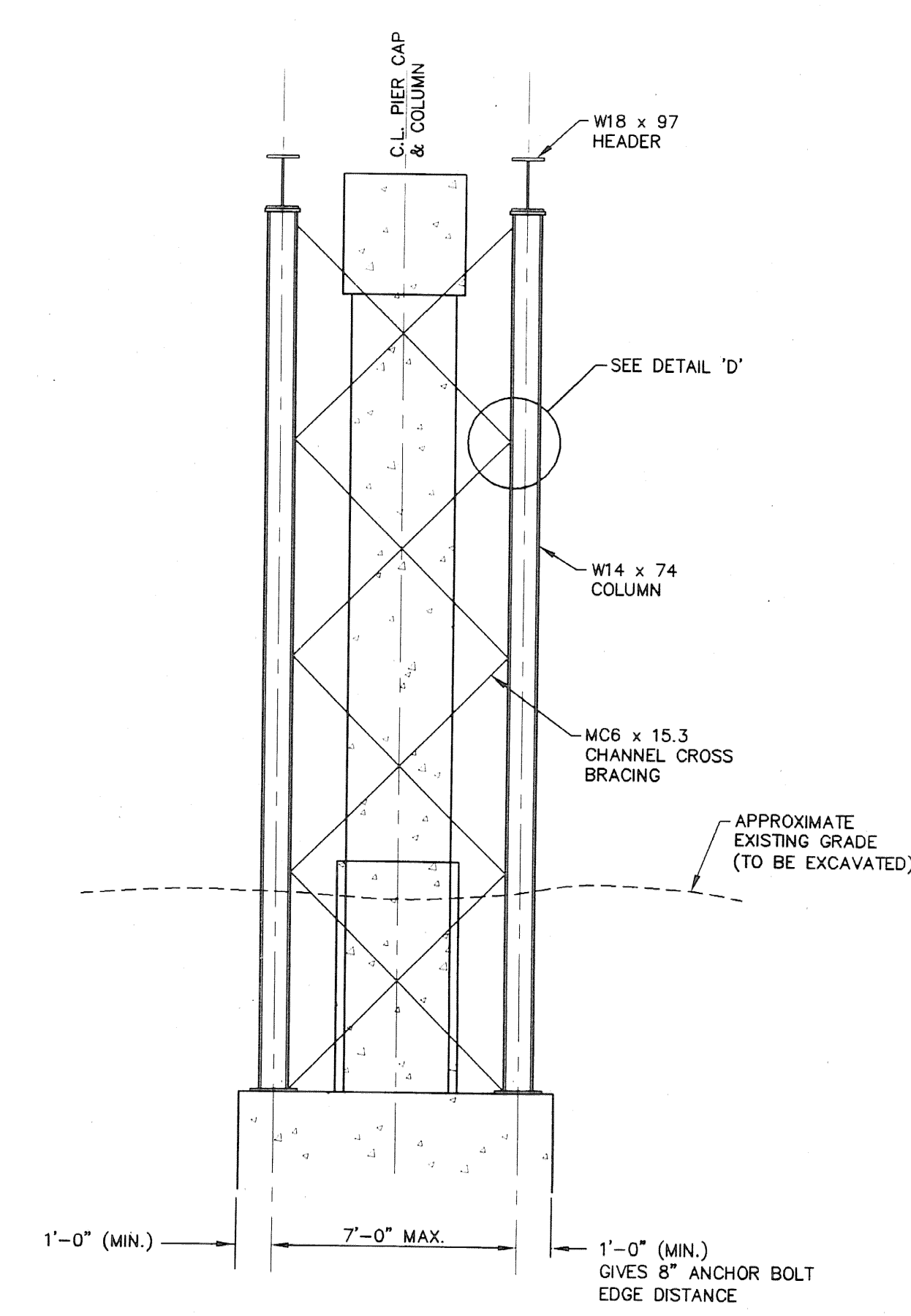
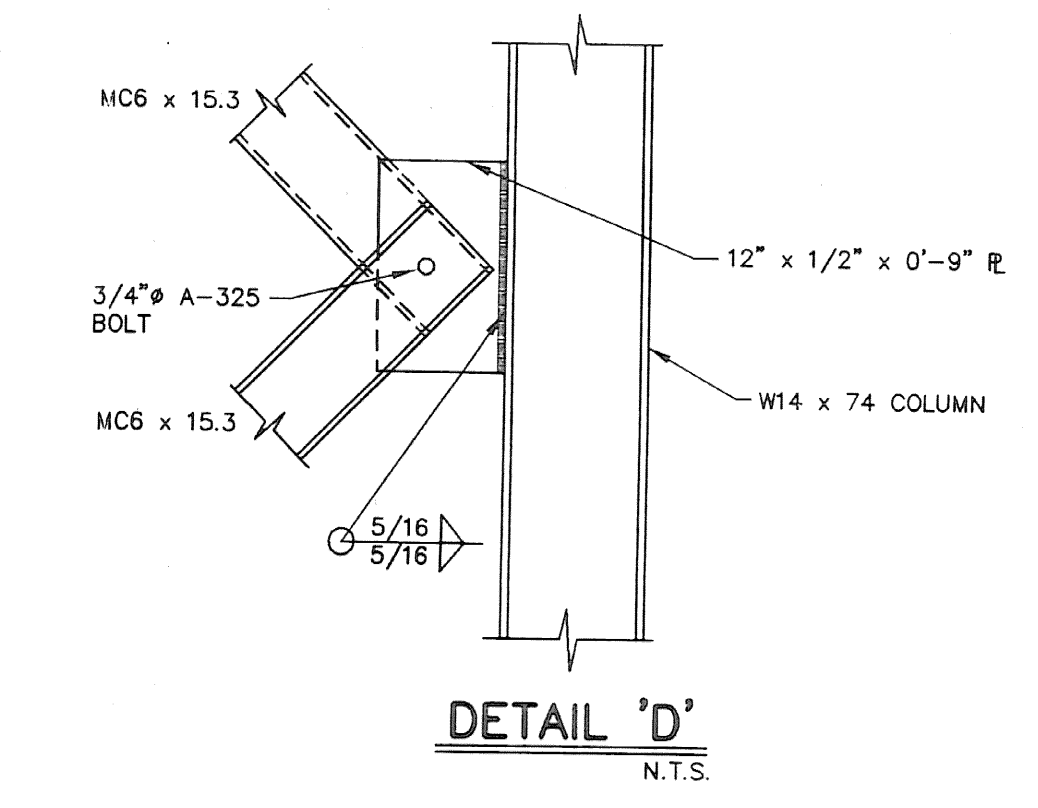


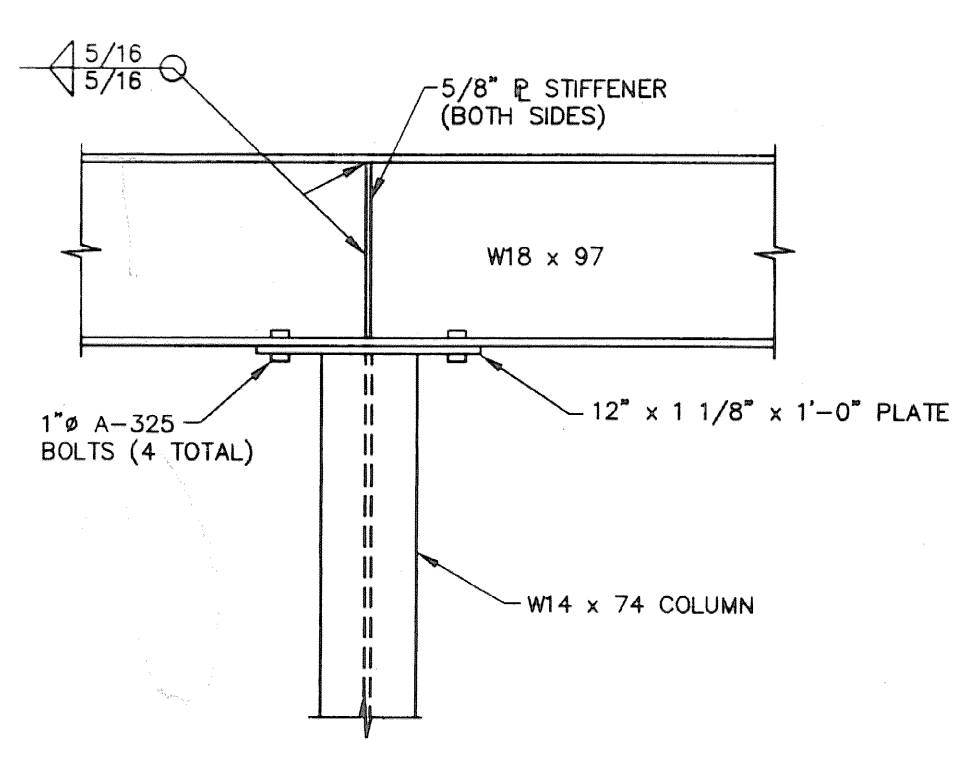
**TYPICAL FRAME LAYOUT FOR SUPPORT**  
 1/4" = 1'-0"



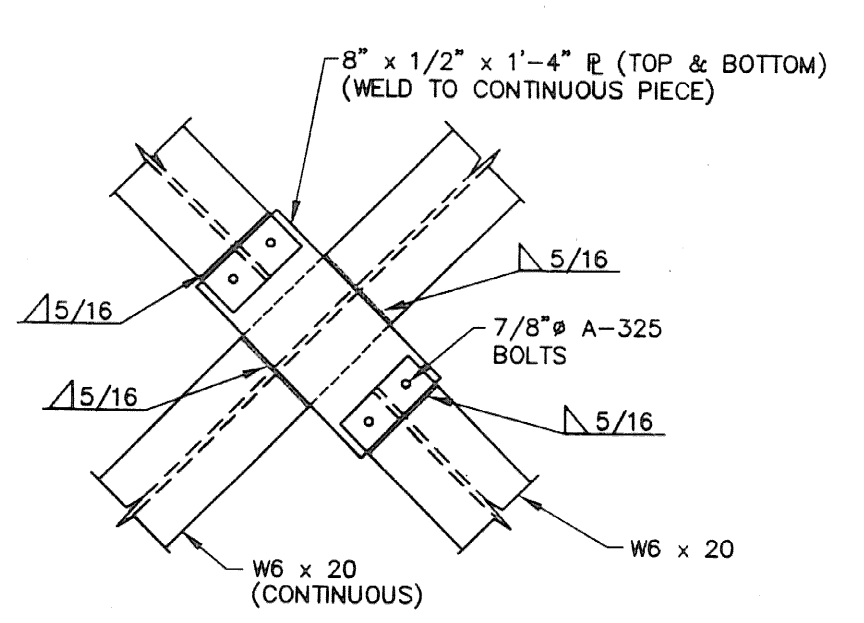
**BRACING SCHEME E-W DIRECTION**  
 1/4" = 1'-0"



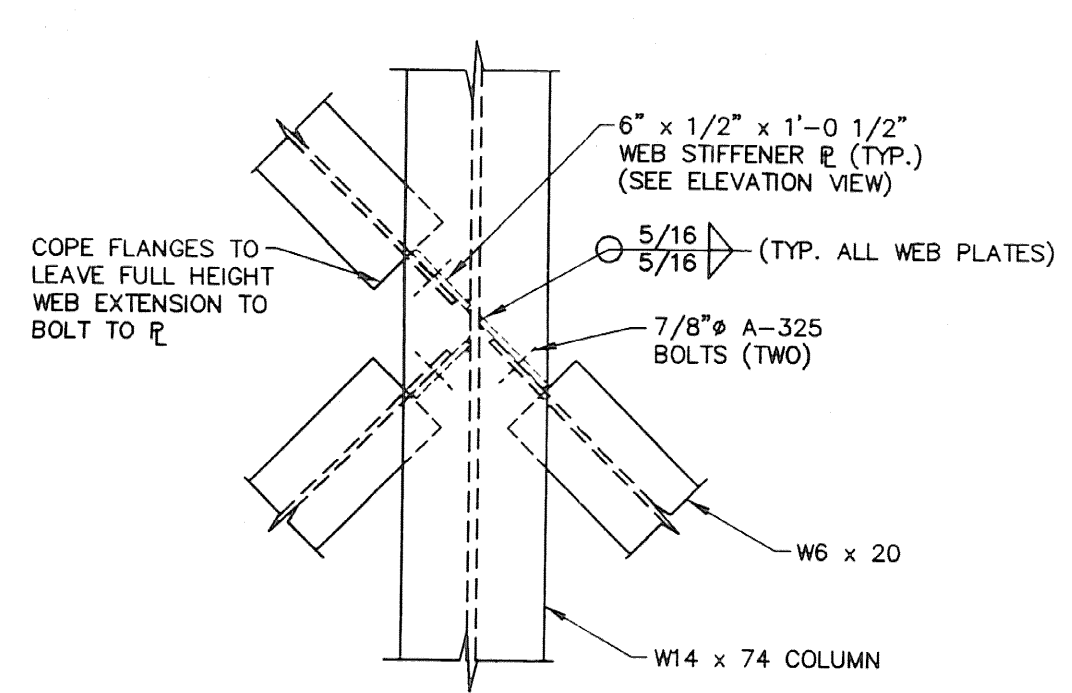
**DETAIL 'D'**  
 N.T.S.



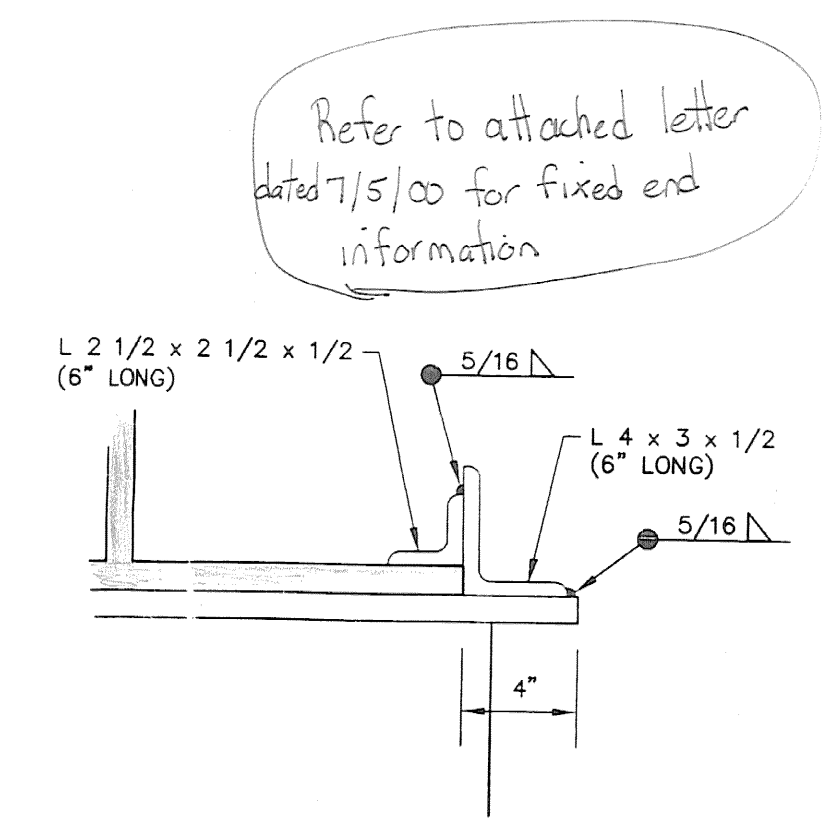
**DETAIL 'A'**  
 N.T.S.



**DETAIL 'B'**  
 N.T.S.

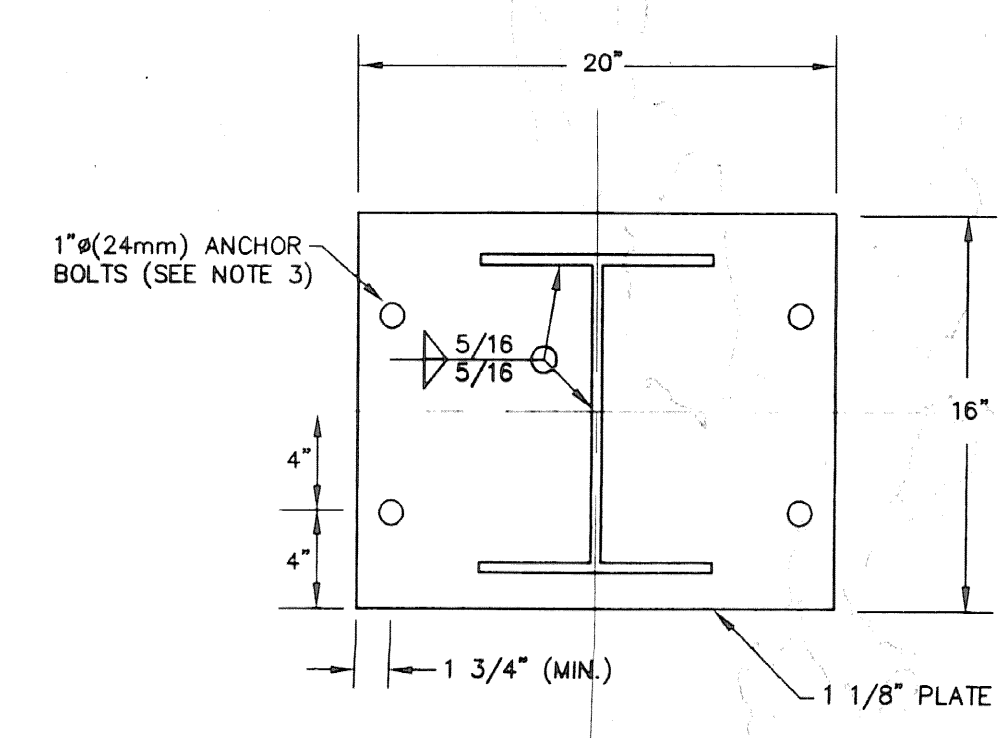


**DETAIL 'C'**  
 N.T.S.

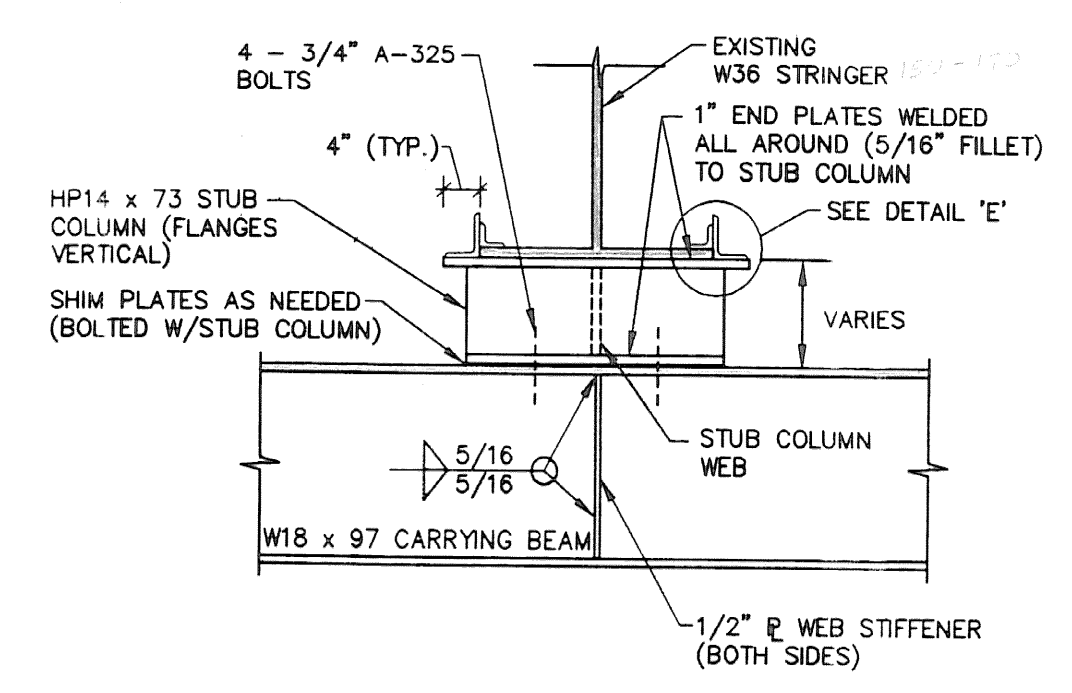


**DETAIL 'E'**  
 N.T.S.

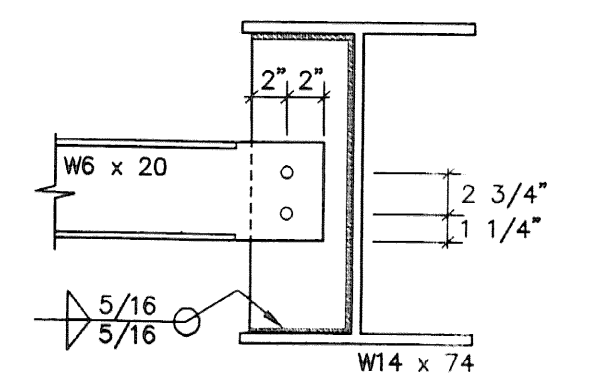
SUBMITTAL REVIEW	
<input type="checkbox"/> REVIEWED AS REQUIRED BY THE CONSTRUCTION CONTRACT DOCUMENTS AND APPROVED, BUT ONLY FOR CONFORMANCE TO THE CONSTRUCTION CONTRACT DOCUMENTS AS SET FORTH IN DIVISION _____ OF THE PLANS, AND SUBJECT TO FURTHER LIMITATIONS AND REQUIREMENTS IN THE CONSTRUCTION CONTRACT DOCUMENTS.	<input type="checkbox"/> REJECT
<input type="checkbox"/> REVISE AND RESUBMIT	<input checked="" type="checkbox"/> FURNISH AS CORRECTED
CORRECTIONS OR COMMENTS MADE ON THE SHOP DRAWINGS DURING THIS REVIEW DO NOT RELIEVE CONTRACTOR OF COMPLIANCE WITH REQUIREMENTS OF THE DRAWINGS AND SPECIFICATIONS. CONTRACTOR IS RESPONSIBLE FOR GENERAL CONFORMANCE WITH THE CONSTRUCTION CONTRACT DOCUMENTS AS SET FORTH IN DIVISION _____ OF THE PLANS, AND SUBJECT TO FURTHER LIMITATIONS AND REQUIREMENTS IN THE CONSTRUCTION CONTRACT DOCUMENTS. THE CONTRACTOR IS RESPONSIBLE FOR CORRECTING ALL QUANTITIES AND DIMENSIONS, SELECTING FABRICATION PROCESSES AND TECHNIQUES OF CONSTRUCTION, COORDINATING WORK WITH THAT OF OTHER TRADES, AND PERFORMING WORK IN A SAFE AND SATISFACTORY MANNER.	
VHB Vermont Hanger Brustin, Inc. Engineers, Planners, and Scientists 86 Spaulding Plaza, Kilton Rd. Bedford, NH 03110 603-644-0888	Job Number: <b>50929</b> Reviewed By: <b>ASR</b> Date: <b>7-5-00</b>



**BASE PLATE DETAIL**  
 N.T.S.



**DETAIL @ GIRDER (STRINGER) SUPPORT**  
 N.T.S.



**ELEVATION VIEW @ DETAIL 'C'**  
 N.T.S.

**NOTES:**

- ALL STEEL SECTIONS TO BE A-36 GRADE.
- ALL MEASUREMENTS TO BE FIELD VERIFIED.
- COLUMN BASEPLATES FOR TEMPORARY SUPPORTS TO BE ATTACHED TO EXISTING PILE CAP WITH 1" DIA. A193-B7 THREADED ROD (4 @ EACH COLUMN) INSTALLED TO A MINIMUM EMBEDMENT OF 9 INCHES USING PRO-POXY 300 FAST ADHESIVE. MINIMUM RECOMMENDED EDGE DISTANCE BY SUPPLIER IS 4 DIAMETERS AND FULL CAPACITY ACHIEVED AT 12 DIAMETERS. PRO-RATED FOR 8 DIAMETERS, AS SHOWN ON THE PLANS, THE ALLOWABLE PULL-OUT CAPACITY IS 6100 LBS. PER ROD AND ALLOWABLE SHEAR CAPACITY IS 8620 LBS. PER ROD. THESE ALLOWABLE LOADS MEET VERTICAL AND HORIZONTAL LOAD REQUIREMENTS.
- EXISTING STRINGERS TO BE SECURED TO SUPPORTING BEAM OR STUB COLUMN BY HOLD-DOWN ANGLES OVER BOTTOM FLANGE OF STRINGER.
- JACKING MAY BE ACCOMPLISHED BY TEMPORARILY REPLACING END MC18 x 42.7 DIAPHRAGM BEAM WITH A W18 x 97 JACKING BEAM BOLTED TO DIAPHRAGM PLATES WELDED TO STRINGERS.
- ONE UPPER BRACE (SEE TYPICAL FRAME LAYOUT DETAIL) MAY BE TEMPORARILY REMOVED TO PERMIT ACCESS TO WORK SPACE AT PIER VERTICAL COLUMNS.
- NO MORE THAN TWO OF FOUR LINES OF E-W BRACING (SEE BRACING SCHEME E-W DIRECTION) MAY BE TEMPORARILY REMOVED FOR ACCESS TO WORK SPACE.
- ALL WELDS ARE 5/16" FILLET WELDS USING E70XX ELECTRODES.

3A. Refer to attached anchor bolt requirements for further information.

**SECTIONS and DETAILS**

DATE <b>6/7/2000</b>	DRAWING NUMBER <b>S1</b>
SCALE <b>AS SHOWN</b>	PROJ. NO. <b>00195</b>