

SECTION 622-340-200

ing direction changes and the construction of joints. Curves, sweeps, and grade changes should be detailed on the work print. The ideal conduit structure is one that is essentially straight and level between manholes but allows grading for drainage into manholes. Direction changes should be as gradual as possible.

1.10 The types and uses of plastic conduit, couplings, and bends are covered in Section 622-020-100.

2. PRECAUTIONS

2.01 Both the cement used to join plastic PVC conduit and the adhesive used to join polypropylene conduit contains materials that are toxic and highly flammable. Concentrated vapors can be harmful and explosive. The following precautions must be observed when using or storing each of these materials.

- (a) Do not use near heat, sparks, or flames.
- (b) Use with adequate ventilation. Forced ventilation shall always be used to ventilate manholes whenever anyone is working in the manhole. See Section 620-140-501.
- (c) Standard manhole testing procedures shall be used for testing the manhole atmosphere.
- (d) Avoid breathing vapors and prolonged contact of these materials with the skin. After use, wash hands thoroughly. Do not take internally. In case of contact with eyes, flush immediately with water and get medical attention.
- (e) Do not leave the cement containers where they can be exposed to contact by the public.
- (f) When not in use, close containers tightly.
- (g) Dispose of used containers as outlined in local practices. Do not pour the contents of these containers into manholes, manhole excavations, or conduit excavations. Do not discard these containers in incinerators, refuse piles, etc.
- (h) A natural bristle brush must be used to apply the cement. Synthetic bristles will dissolve in these materials.

2.02 The requirements for shoring excavations as specified in Section 622-020-020 shall be observed.

2.03 Safety headgear and eye protection should be worn at all times when trenching and when handling or laying conduit.

2.04 Where blasting is necessary, it shall be done only by a licensed contractor.

2.05 At the excavation site, particularly near natural gas areas, landfills, and similar areas, the excavation should be tested for gas by following the procedures for testing manholes, as covered in Section 620-140-501.

2.06 The applicable precautions covered in Sections 620-102-010 and 622-100-010 shall be considered a part of this section and shall be observed.

3. HANDLING

3.01 If practical, distribute the conduit along the route of the trench, as shown in Fig. 1. Where conduit cannot be distributed along the trench, route delivery and storage procedures should be determined locally.

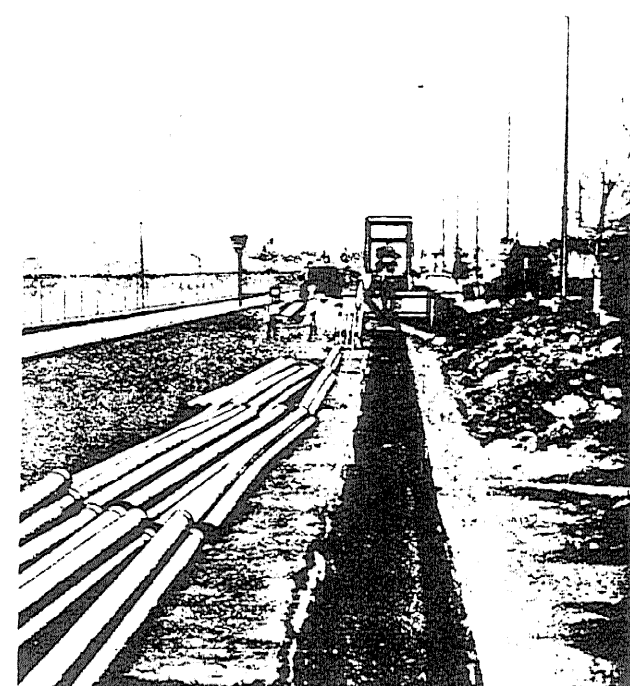


Fig. 1 — Conduit Along Trench Site