

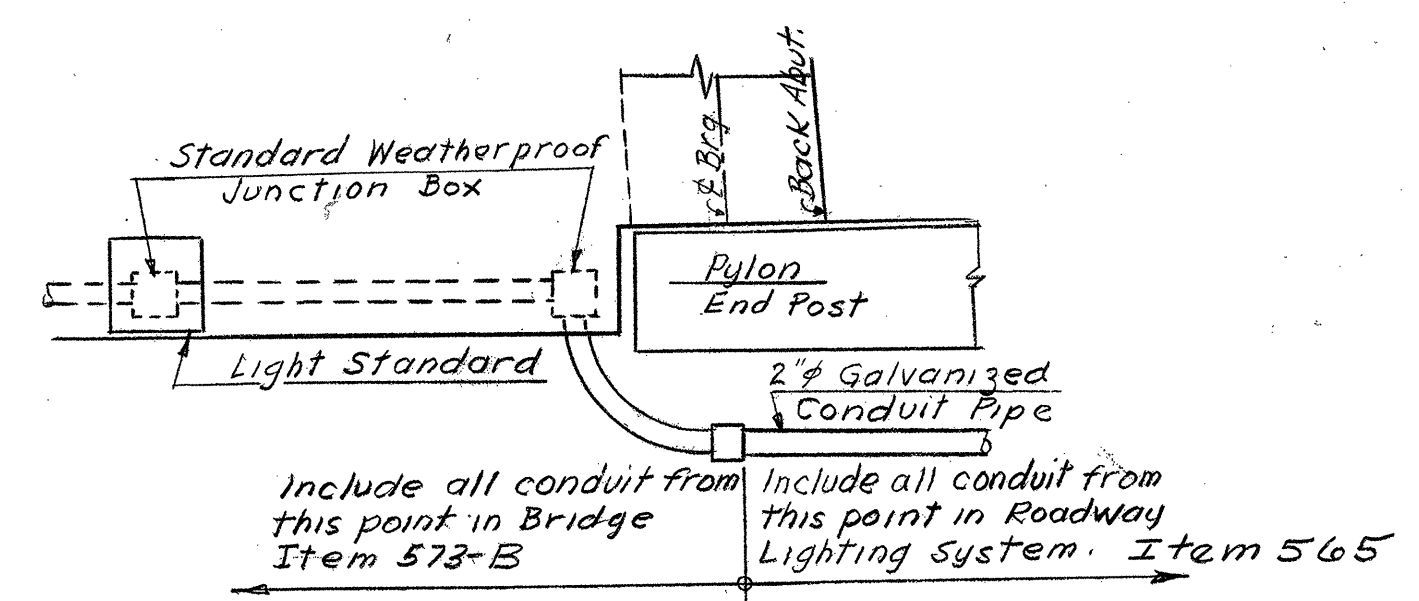
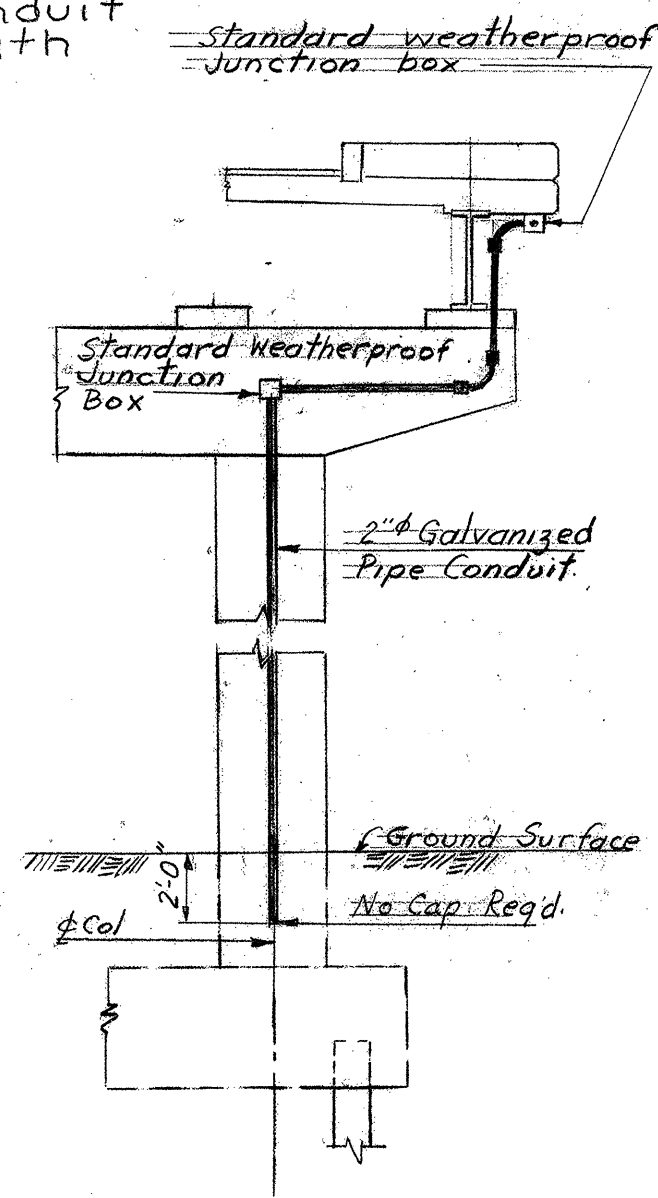
NOTES REGARDING LIGHTING SYSTEM

CONDUIT - The conduit shall be of the rigid steel type galvanized and coated inside and out with backed enamel and shall conform to the requirements of the National Electrical Manufacturers Association and each length shall bear the label of approval of the National Board of Fire Underwriters. Fittings, connections, and junction boxes shall be made of the same material as the conduit. The field cuts on conduit shall be made square and true so that the ends will butt or come together for the full diameter thereof. All couplings shall be screwed up until the ends of the conduit are brought together so that a good electrical connection will be made. All ends of conduit shall be reamed and unless slip joint expansion devices are indicated all connections shall be threaded. Where conduit bends are made in the field, they shall have a radius of not less than six (6) times the inside diameter of the conduit. The conduit shall be bent without crimping or flattening using the longest radius possible. One quarter (1/4) inch holes for drainage of the conduit shall be provided at the low point on each conduit run, or as ordered by the engineer. All holes for drainage shall be reamed thereby leaving no sharp edges on the inside of the conduit.

After the conduit lines are completed, the contractor shall, in the presence of the engineer, test the installation by pushing through the entire length, a mandrell of a diameter of one quarter (1/4) inch less than the inside diameter of the conduit. All obstructions, including stones, dirt, etc., shall be removed and any damaged conduit shall be replaced at the expense of the contractor. All exposed conduit ends shall be threaded and capped with standard conduit caps until wiring is started. When the caps are removed, the threaded ends shall be provided with approved conduit bushings.

A number 12 A.W.G. pull wire shall be installed in all conduit after installation and testing has been completed. The pull wire shall terminate beyond the end of the conduit in each pull box.

Previous to the pouring of the concrete, the anchor rods, nuts and washers, and a template for the setting of the rods will be furnished to the Contractor, by the Utility Company installing the components necessary to complete the lighting system.



NOTES:
1. For General Notes see Br 1
2. For Lighting System Conduit Details see SB-21-56

SOUTH BURLINGTON IM DECK (36)
FOR REFERENCE ONLY - BRIDGE 68
SHEET 68 OF 75

STATE OF VERMONT
DEPARTMENT OF HIGHWAYS

INTERSTATE PROJECT IN THE TOWNS OF
SOUTH BURLINGTON

UNDERPASS STA. 2101+78.29
BURLINGTON INTERCHANGE
UTILITIES & DETAILS

BOSWELL ENGINEERING CO. RIDGEFIELD PARK, N.J.

DRAWN BY D.S. IN CHARGE A.J.L. SCALE As Shown
CHECKED BY A.J.L. DATE

PROJECT NO. 1 89-3 (12) SHEET 158 OF 175