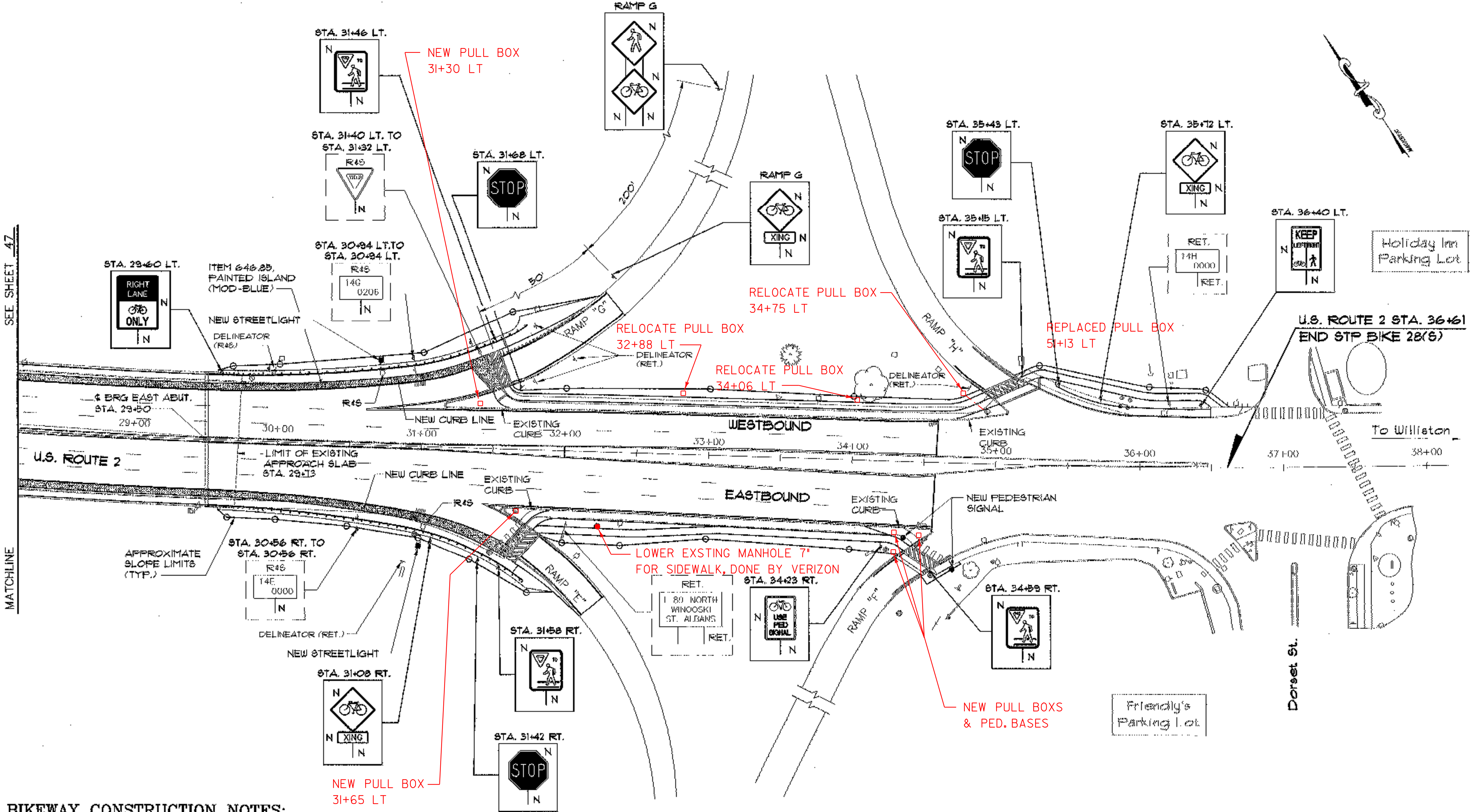
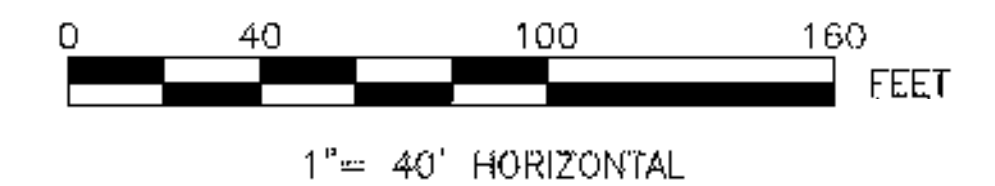


**PAVEMENT MARKING NOTES:**

- ITEM 646.40, DURABLE 4" WHITE LINE (TYPE I TAPE)
  - \* STA. 28+20, LT - 30+61, LT (DASHED)
  - \* STA. 28+20, RT - 34+58, RT (DASHED)
  - \* STA. 28+20, LT - 34+58, LT (DASHED)
  - \* STA. 28+20, RT - 34+58, RT (DASHED)
  - STA. 31+16, LT - 34+58, LT
  - STA. 31+60, RT - 34+58, RT
- ITEM 646.41, DURABLE 4" YELLOW LINE (TYPE I TAPE)
  - \* STA. 28+20, LT - 34+58, LT
  - \* STA. 28+20, RT - 34+58, RT
- ITEM 646.41A, DURABLE 6" WHITE LINE (TYPE I TAPE)
  - STA. 28+20, LT - 31+34, LT
  - STA. 28+20, RT - 31+51, RT
  - STA. 31+55, LT - 32+26, LT
  - STA. 31+72, RT - 32+15, RT
  - STA. 34+31, RT - 34+55, RT
  - STA. 34+82, LT - 35+11, LT
- ITEM 646.41B, DURABLE 6" YELLOW LINE (TYPE I TAPE)
  - STA. 31+62, LT - 32+37, LT
  - STA. 31+84, RT - 32+29, RT
  - STA. 34+17, RT - 34+38, RT
  - STA. 34+69, LT - 34+91, LT
- ITEM 646.42, DURABLE 8" WHITE LINE (TYPE I TAPE)
  - STA. 30+61, LT - 31+16, LT
  - STA. 30+61, LT - 31+17, LT
  - STA. 31+44, RT - 31+60, RT
  - STA. 31+44, RT - 31+60, RT (INCL. DIAGONALS)
  - STA. 31+44, RT - 31+72, RT
  - STA. 34+45, RT - 34+55, RT
  - STA. 34+62, RT - 34+70, RT
- ITEM 646.44, DURABLE 12" WHITE LINE (TYPE I TAPE)
  - STA. 31+34, LT - 31+48, LT
  - STA. 31+56, LT - 31+60, LT
  - STA. 31+57, RT - 31+65, RT
  - STA. 31+57, RT - 31+74, RT
  - STA. 35+02, LT - 35+34, LT
  - STA. 35+33, LT - 35+34, LT
- ITEM 646.46, DURABLE 24" STOP BAR (TYPE I TAPE)
  - STA. 34+32, RT - 34+52, RT
- ITEM 646.51, DURABLE CROSSWALK W/ DIAGONAL LINES (TYPE I TAPE)
  - LOCATED AT EACH RAMP CROSSING AS SHOWN.

**SHEET NOTES:**

1. PAVEMENT MARKINGS INDICATED WITH AN \* SHALL BE PAID FOR UNDER THE 1M DECK (36') BRIDGE REHABILITATION PROJECT.
2. FOR SYMBOLS OR LETTER PAVEMENT MARKINGS SEE SHEETS 49 - 52.
3. COLD PLANING AND PAVING EXTENDS BEYOND THE LIMIT SHOWN ON THIS SHEET. SEE SHEETS 34A, 34B, AND 34C.



**BIKEYWAY CONSTRUCTION NOTES:**

1. STA. 31+59 LT. TO STA. 34+32 LT., STA. 31+82 RT. TO STA. 34+40 RT. AND STA. 35+18 LT. TO STA. 36+61 LT.: REMOVE EXISTING SIDEWALK AND CONSTRUCT NEW SIDEWALK AND BIKEYWAY BETWEEN RAMP G & H, RAMP E & F, AND BEYOND RAMP H WITH:
  - ITEM 203.15, COMMON EXCAVATION
  - ITEM 203.28, EXCAVATION OF SURFACES AND PAVEMENTS
  - ITEM 301.26, SUBBASE OF CRUSHED GRAVEL (FINE GRADED)
  - ITEM 616.21, VERTICAL GRANITE CURB
  - ITEM 618.10, PORTLAND CEMENT CONCRETE SIDEWALK, 5 INCH
  - ITEM 618.15, BITUMINOUS CONCRETE SIDEWALK
2. REMOVE EXISTING SIDEWALK RAMPS AND CONSTRUCT SIDEWALK RAMPS AS SHOWN ON STANDARD SHEET C-3 AT:
  - RAMP G  
STA. 31+49, LT, TYPE 6  
STA. 31+58, LT, TYPE 1
  - RAMP E  
STA. 31+63, RT, TYPE 6  
STA. 31+62, RT, TYPE 1
  - WITH:  
ITEM 203.15, COMMON EXCAVATION  
ITEM 203.28, EXCAVATION OF SURFACES AND PAVEMENTS  
ITEM 301.26, SUBBASE OF CRUSHED GRAVEL (FINE GRADED)  
ITEM 616.21, VERTICAL GRANITE CURB  
ITEM 618.10, PORTLAND CEMENT CONCRETE SIDEWALK, 5 INCH
  - RAMP F  
STA. 34+40, RT, TYPE 1  
STA. 34+60, RT, TYPE 6
  - RAMP H  
STA. 34+83, LT, TYPE 1  
STA. 35+18, LT, TYPE 1
3. STA. 29+73 LT. TO STA. 31+56 LT., STA. 29+73 RT. TO STA. 31+61 RT.: CONSTRUCT SIDEWALK WITH:
  - ITEM 203.15, COMMON EXCAVATION
  - ITEM 203.28, EXCAVATION OF SURFACES AND PAVEMENTS
  - ITEM 301.26, SUBBASE OF CRUSHED GRAVEL (FINE GRADED)
  - ITEM 616.21, VERTICAL GRANITE CURB
  - ITEM 616.40, REMOVING AND RESETTING CURB
  - ITEM 618.10, PORTLAND CEMENT CONCRETE SIDEWALK, 5 INCH
 CONSTRUCT SIDEWALK WIDENING AND OVERLAY AS NECESSARY WITH:
  - ITEM 529.25, REMOVAL OF CONCRETE OR MASONRY
  - ITEM 501.60, SILICA-FUME CONCRETE (MOD.)
 CONSTRUCT REINFORCED CONCRETE SLAB OVER FIBER OPTIC BANK AS NECESSARY WITH:
  - ITEM 501.25, CONCRETE CLASS B
  - ITEM 501.15, REINFORCING STEEL
 SEE RAMP PLAN SHEETS 49 AND 50, AND SECTIONS A-A, B-B, AND C-C ON SHEET 54.
4. STA. 31+00 LT. AND STA. 31+00 RT.: REPLACE EXISTING DROP INLETS WITH NEW DROP INLETS WITH:
  - ITEM 604.10, CONCRETE CATCH BASIN WITH CAST IRON GRATE
 COSTS FOR ANY NEW PIPE REQUIRED TO CONNECT THE RELOCATED DROP INLETS TO THE EXISTING DRAINAGE SYSTEM SHALL BE INCLUDED IN ITEM 604.10. COSTS FOR REMOVAL OF EXISTING DROP INLETS SHALL BE SUBSIDIARY TO ITEM 604.10.
5. STA. 30+76 LT. TO STA. 31+73 LT.: REMOVE AND RESET EXISTING BEAM GUARD RAIL WITH:
  - ITEM 621.75, REMOVING AND RESET GUARD RAIL
6. STA. 29+87 LT. TO STA. 30+76 LT., STA. 29+91 RT. TO STA. 31+73 RT.: INSTALL HEAVY DUTY STEEL BEAM GUARD RAIL WITH:
  - ITEM 621.21, HEAVY DUTY STEEL BEAM GUARD RAIL
7. STA. 31+71 LT.: RESET EXISTING END UNIT
  - COST INCLUDED IN ITEM 621.75, REMOVING AND RESET GUARD RAIL
8. STA. 31+73 RT. INSTALL G-I-D TERMINAL UNIT
  - COST INCLUDED IN ITEM 621.21, HEAVY DUTY STEEL BEAM GUARD RAIL
9. ALL SLOPES BEHIND FACE OF RAIL SHALL BE TREATED WITH THE FOLLOWING AS DIRECTED BY THE ENGINEER:
  - ITEM 203.15, COMMON EXCAVATION
  - ITEM 613.10, STONE FILL, TYPE 1
  - ITEM 649.31, GEOTEXTILE UNDER STONE FILL
  - ITEM 651.35, TOPSOIL
 SEE RAMP PLAN SHEETS 49 AND 50, AND SECTIONS A-A, B-B, AND C-C ON SHEET 54.
10. STA. 31+55 LT. TO STA. 32+02 LT.: SCORE PAVEMENT TO CREATE RUMBLE STRIP WITH:
  - ITEM 219.10, MILLED RUMBLE STRIPS

<b>STATE OF VERMONT AGENCY OF TRANSPORTATION</b>	
Town Of <b>SOUTH BURLINGTON</b>	Bridge No. <b>68</b>
Highway No. <b>U.S. 2</b>	Log Sta. _____ Surv. Sta. _____
<b>U.S. 2 OVER I-89 BIKEYWAY PLAN (2 OF 2)</b>	
Designed By <b>S.M. HODGDON</b>	Drawn By <b>C.L. CILEY</b>
Checked By <b>T.S. BRYANT 2/00</b>	Date <b>2/00</b> Bridge Design Supervisor <b>C.D. BAKER</b>
PROJECT <b>SOUTH BURLINGTON</b>	PROJECT NO. <b>STP BIKE (28)S</b>
VHB Cad Drawing No. <b>50963BIK</b>	Date <b>2/00</b>
Bridge Sheet No. _____	Sheet <b>48</b> of <b>13</b>