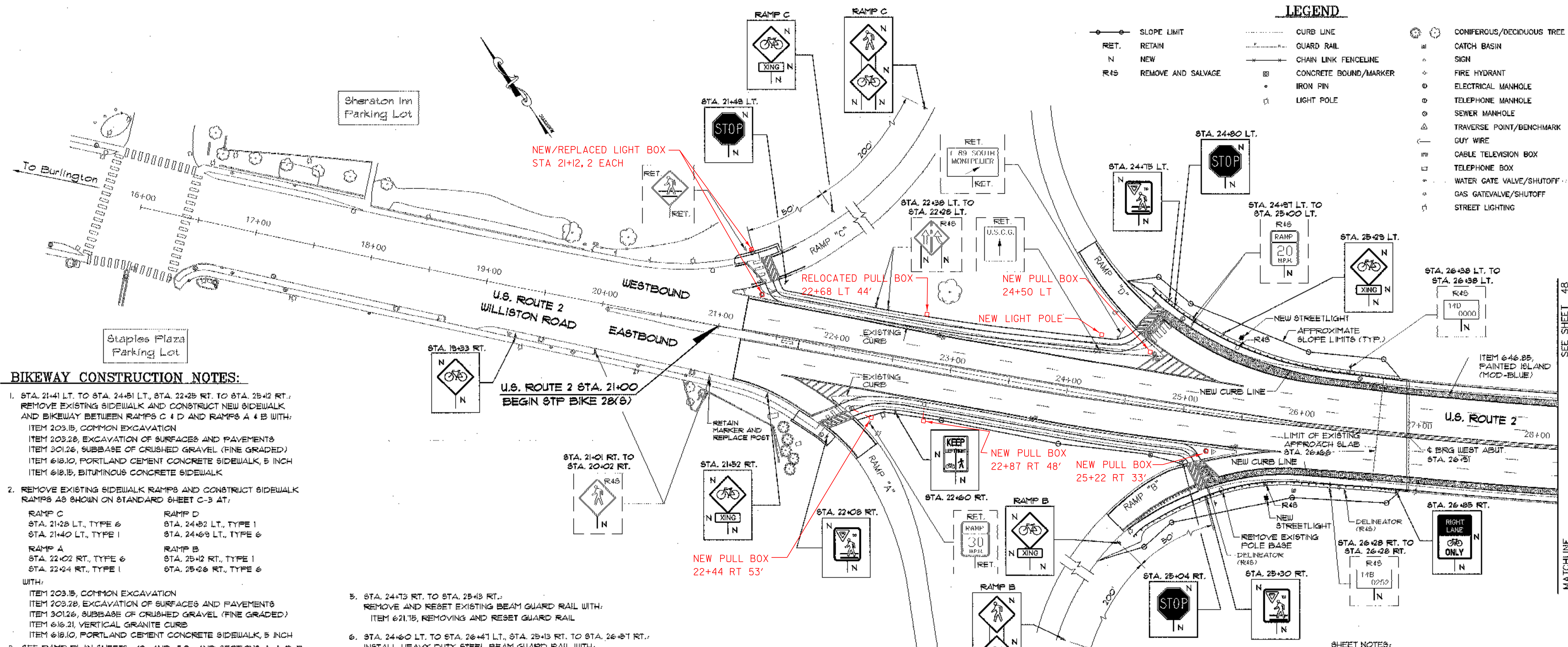


**LEGEND**

- SLOPE LIMIT
- RET. RETAIN
- N NEW
- R45 REMOVE AND SALVAGE
- CURB LINE
- GUARD RAIL
- CHAIN LINK FENCELINE
- CONCRETE BOUND/MARKER
- IRON PIN
- ⊕ LIGHT POLE
- ⊙ CONIFEROUS/DECIDUOUS TREE
- ⊙ CATCH BASIN
- ⊙ SIGN
- ⊙ FIRE HYDRANT
- ⊙ ELECTRICAL MANHOLE
- ⊙ TELEPHONE MANHOLE
- ⊙ SEWER MANHOLE
- ⊙ TRAVERSE POINT/BENCHMARK
- GUY WIRE
- ⊙ CABLE TELEVISION BOX
- ⊙ TELEPHONE BOX
- ⊙ WATER GATE VALVE/SHUTOFF
- ⊙ GAS GATEVALVE/SHUTOFF
- ⊙ STREET LIGHTING



**BIKEWAY CONSTRUCTION NOTES:**

1. STA. 21+41 LT. TO STA. 24+51 LT., STA. 22+25 RT. TO STA. 25+42 RT.: REMOVE EXISTING SIDEWALK AND CONSTRUCT NEW SIDEWALK AND BIKEWAY BETWEEN RAMPS C & D AND RAMPS A & B WITH:
  - ITEM 203.15, COMMON EXCAVATION
  - ITEM 203.28, EXCAVATION OF SURFACES AND PAVEMENTS
  - ITEM 301.26, SUBBASE OF CRUSHED GRAVEL (FINE GRADED)
  - ITEM 618.10, PORTLAND CEMENT CONCRETE SIDEWALK, 5 INCH
  - ITEM 618.15, BITUMINOUS CONCRETE SIDEWALK
2. REMOVE EXISTING SIDEWALK RAMPS AND CONSTRUCT SIDEWALK RAMPS AS SHOWN ON STANDARD SHEET C-3 AT:
 

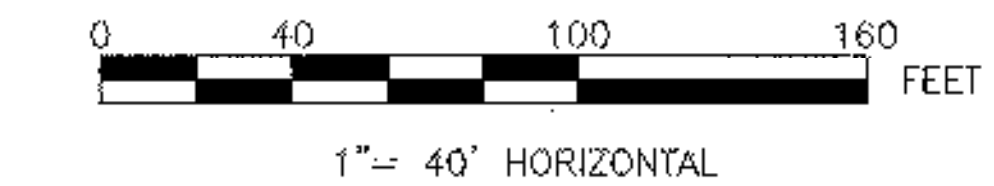
RAMP C STA. 21+28 LT., TYPE 6 STA. 21+40 LT., TYPE 1  RAMP A STA. 22+02 RT., TYPE 6 STA. 22+24 RT., TYPE 1	RAMP D STA. 24+82 LT., TYPE 1 STA. 24+69 LT., TYPE 6  RAMP B STA. 25+42 RT., TYPE 1 STA. 25+26 RT., TYPE 6
--	--

 WITH:
  - ITEM 203.15, COMMON EXCAVATION
  - ITEM 203.28, EXCAVATION OF SURFACES AND PAVEMENTS
  - ITEM 301.26, SUBBASE OF CRUSHED GRAVEL (FINE GRADED)
  - ITEM 618.21, VERTICAL GRANITE CURB
  - ITEM 618.10, PORTLAND CEMENT CONCRETE SIDEWALK, 5 INCH
3. SEE RAMP PLAN SHEETS 49 AND 50, AND SECTIONS A-A, B-B, AND C-C ON SHEET 54.
  - STA. 24+61 LT. TO STA. 26+66 LT., STA. 25+47 RT. TO STA. 26+66 RT. CONSTRUCT SIDEWALK WITH:
    - ITEM 203.15, COMMON EXCAVATION
    - ITEM 203.28, EXCAVATION OF SURFACES AND PAVEMENTS
    - ITEM 301.26, SUBBASE OF CRUSHED GRAVEL (FINE GRADED)
    - ITEM 618.21, VERTICAL GRANITE CURB
    - ITEM 618.40, REMOVING AND RESET CURB
    - ITEM 618.10, PORTLAND CEMENT CONCRETE SIDEWALK, 5 INCH
  - CONSTRUCT SIDEWALK WIDENING AND OVERLAY AS NECESSARY WITH:
    - ITEM 529.25, REMOVAL OF CONCRETE OR MASONRY
    - ITEM 501.60, SILICA-FUME CONCRETE (MOD.)
  - CONSTRUCT REINFORCED CONCRETE SLAB OVER FIBER OPTIC BANK AS NECESSARY WITH:
    - ITEM 501.25, CONCRETE CLASS B
    - ITEM 507.15, REINFORCING STEEL.
4. STA. 26+59 LT. AND STA. 26+61 RT.: RECONSTRUCT EXISTING DROP INLET AS NECESSARY TO RELOCATE GRATE FRAME ADJACENT TO NEW CURB LINE WITH:
  - ITEM 604.41, REHABILITATION OF DROP INLETS, CATCH BASINS OR MANHOLES.
 COSTS FOR ANY NEW PIPE REQUIRED TO CONNECT THE RELOCATED DROP INLETS TO THE EXISTING DRAINAGE SYSTEM SHALL BE INCLUDED IN ITEM 604.41.
  - STA. 22+85 LT., STA. 23+75 RT., STA. 24+10 LT., AND STA. 25+45 RT.: ADJUST ELEVATIONS OF DROP INLETS AS NECESSARY TO ACCOMMODATE CHANGES IN FINISHED GRADE WITH:
    - ITEM 604.40, CHANGING ELEVATIONS OF DROP INLETS, CATCH BASINS OR MANHOLES.

5. STA. 24+73 RT. TO STA. 25+43 RT.: REMOVE AND RESET EXISTING BEAM GUARD RAIL WITH:
  - ITEM 621.15, REMOVING AND RESET GUARD RAIL
6. STA. 24+60 LT. TO STA. 26+47 LT., STA. 25+13 RT. TO STA. 26+87 RT.: INSTALL HEAVY DUTY STEEL BEAM GUARD RAIL WITH:
  - ITEM 621.21, HEAVY DUTY STEEL BEAM GUARD RAIL
7. STA. 24+14 RT.: RESET EXISTING END UNIT
  - COST INCLUDED IN ITEM 621.15, REMOVING AND RESET GUARD RAIL
8. STA. 24+60 LT.: INSTALL G1-D TERMINAL UNIT
  - COST INCLUDED IN ITEM 621.21, HEAVY DUTY STEEL BEAM GUARD RAIL
9. ALL SLOPES BEHIND FACE OF RAIL SHALL BE TREATED WITH THE FOLLOWING AS DIRECTED BY THE ENGINEER:
  - ITEM 203.15, COMMON EXCAVATION
  - ITEM 618.10, STONE FILL, TYPE 1
  - ITEM 649.31, GEOTEXTILE UNDER STONE FILL
  - ITEM 651.35, TOPSOIL
 SEE RAMP PLAN SHEETS 49 AND 50, AND SECTIONS A-A, B-B, AND C-C ON SHEET 54.
10. STA. 24+75 RT. TO STA. 25+43 RT.: SCORE PAVEMENT TO CREATE RUMBLE STRIP WITH:
  - ITEM 213.10, MILLED RUMBLE STRIPS
11. AN EXISTING RAMP MARKER SIGN IS PRESENTLY AT STA. 21+00 RT. MOUNTED TO A TRAFFIC SIGNPOST THAT IS BEING REMOVED. THE CONTRACTOR SHALL PROVIDE A NEW POST FOR THIS SIGN AND RESECURE THE RAMP MARKER SIGN. THIS WORK SHALL BE SUBSIDIARY TO ITEM 675.50, REMOVING SIGNS.
12. ALL DELINEATORS REMOVED AND SALVAGED SHALL BE PLACED WITHIN 10 FEET OF EXISTING LOCATION OR AS DIRECTED BY THE ENGINEER. REMOVING AND RESET EXISTING DELINEATORS SHALL BE SUBSIDIARY TO ITEM 675.50, REMOVING SIGNS.

**PAVEMENT MARKING NOTES**

- ITEM 646.40, DURABLE 4" WHITE LINE (TYPE I TAPE)
  - STA. 21+21, LT - 24+43, LT
  - \* STA. 21+21, LT - 28+20, LT (DASHED)
  - STA. 21+21, RT - 21+81, RT
  - \* STA. 21+21, RT - 28+20, RT (DASHED)
  - STA. 22+11, RT - 25+48, RT
  - \* STA. 25+80, LT - 28+20, LT (DASHED)
  - \* STA. 25+86, RT - 28+20, RT (DASHED)
- ITEM 646.41, DURABLE 4" YELLOW LINE (TYPE I TAPE)
  - \* STA. 21+21, LT - 28+20, LT
  - \* STA. 21+21, RT - 28+20, RT
- ITEM 646.414, DURABLE 6" WHITE LINE (TYPE I TAPE)
  - STA. 21+83, LT - 21+82, LT
  - STA. 22+08, RT - 22+37, RT
  - STA. 24+04, LT - 24+61, LT
  - STA. 24+64, RT - 25+49, RT
  - STA. 24+60, LT - 28+20, LT
  - STA. 25+37, RT - 28+20, RT
- ITEM 646.415, DURABLE 6" YELLOW LINE (TYPE I TAPE)
  - STA. 21+43, LT - 21+63, LT
  - STA. 22+26, RT - 22+49, RT
  - STA. 23+81, LT - 24+50, LT
  - STA. 24+50, RT - 25+09, RT
- ITEM 646.42, DURABLE 8" WHITE LINE (TYPE I TAPE)
  - STA. 21+17, LT - 21+25, LT
  - STA. 21+60, RT - 22+71, RT
  - STA. 21+73, RT - 22+21, RT (INCL. DIAGONALS)
  - STA. 24+43, LT - 25+48, LT
  - STA. 24+56, LT - 25+26, LT (INCL. DIAGONALS)
  - STA. 24+63, LT - 25+26, LT
  - STA. 25+22, RT - 25+86, RT
  - STA. 25+48, RT - 25+86, RT
- ITEM 646.44, DURABLE 12" WHITE LINE (TYPE I TAPE)
  - STA. 21+15, LT - 21+52, LT
  - STA. 21+42, LT - 21+45, LT
  - STA. 21+91, RT - 22+11, RT
  - STA. 24+60, LT - 24+80, LT
  - STA. 24+63, LT - 24+80, LT
  - STA. 25+43, RT - 25+48, RT
  - STA. 25+41, RT - 25+37, RT
- ITEM 646.51, DURABLE CROSSWALK W/ DIAGONAL LINES (TYPE I TAPE)
  - LOCATED AT EACH RAMP CROSSING AS SHOWN.
- ITEM 646.85, PAINTED ISLAND (MOD-BLUE)
  - RAMP D TO RAMP E, LT
  - RAMP B TO RAMP E, RT
  - SEE DETAIL ON SHEET 54.



**STATE OF VERMONT AGENCY OF TRANSPORTATION**

Town Of <b>SOUTH BURLINGTON</b>		Bridge No. <b>68</b>
Highway No. <b>U.S. 2</b>		Log Sta. _____
		Surv. Sta. _____
<b>U.S. 2 OVER I-89</b>		
<b>BIKEWAY PLAN (1 OF 2)</b>		
Designed By <b>S.M. HODGSON</b>	Drawn By <b>C.L. CILEY</b>	
Checked By <b>T.S. BRYANT 2/00</b>	Date <b>2/00</b>	Bridge Design Supervisor <b>C.D. BAKER</b> Date <b>2/00</b>
PROJECT <b>SOUTH BURLINGTON</b>		PROJECT NO. <b>STP BIKE (28)S</b>
VHB Cad Drawing No. <b>50363BIK</b>		Date <b>2/00</b>
Bridge Sheet No. _____		Sheet <b>47</b> of <b>75</b>

VANASSE HANGEN BRUSTLIN, INC.

SEE SHEET 48

MATCHLINE