

NEW COMPLETE DI TYPE "D" GRATE 30+97 RT 50

45FT NEW WIRE

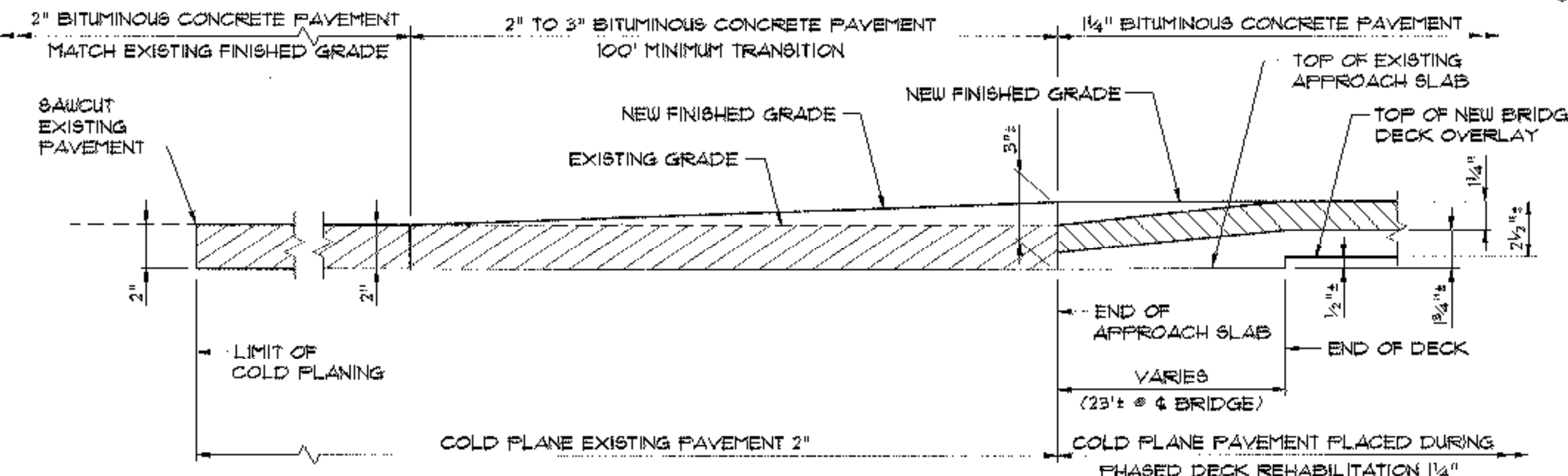
RELOCATED LIGHT POLE FROM BRIDGE

RELOCATED WIRE CONDUIT FOR LIGHT POLE

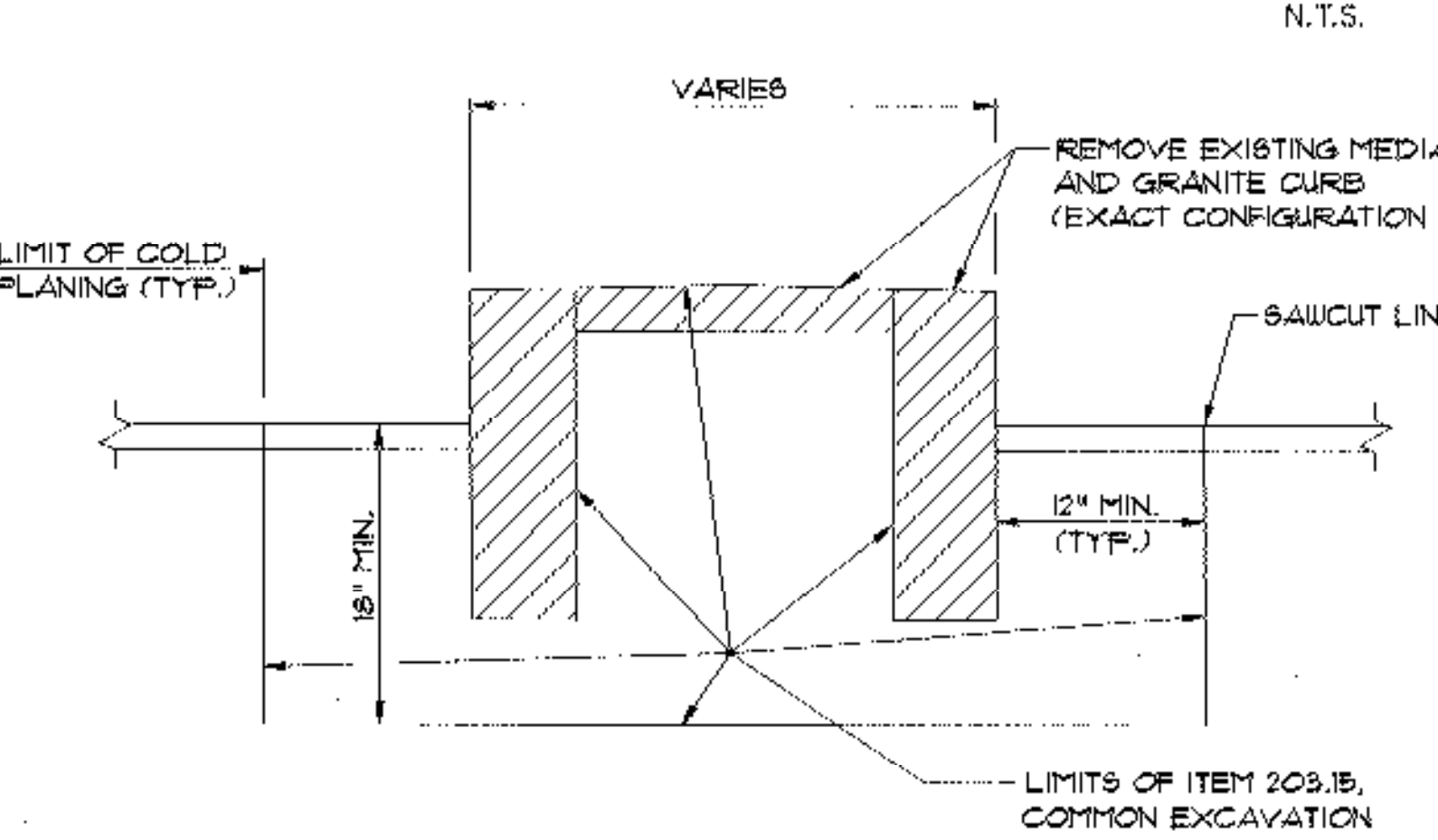
NEW LIGHT POLE 30+95 RT

NEW PULL BOX

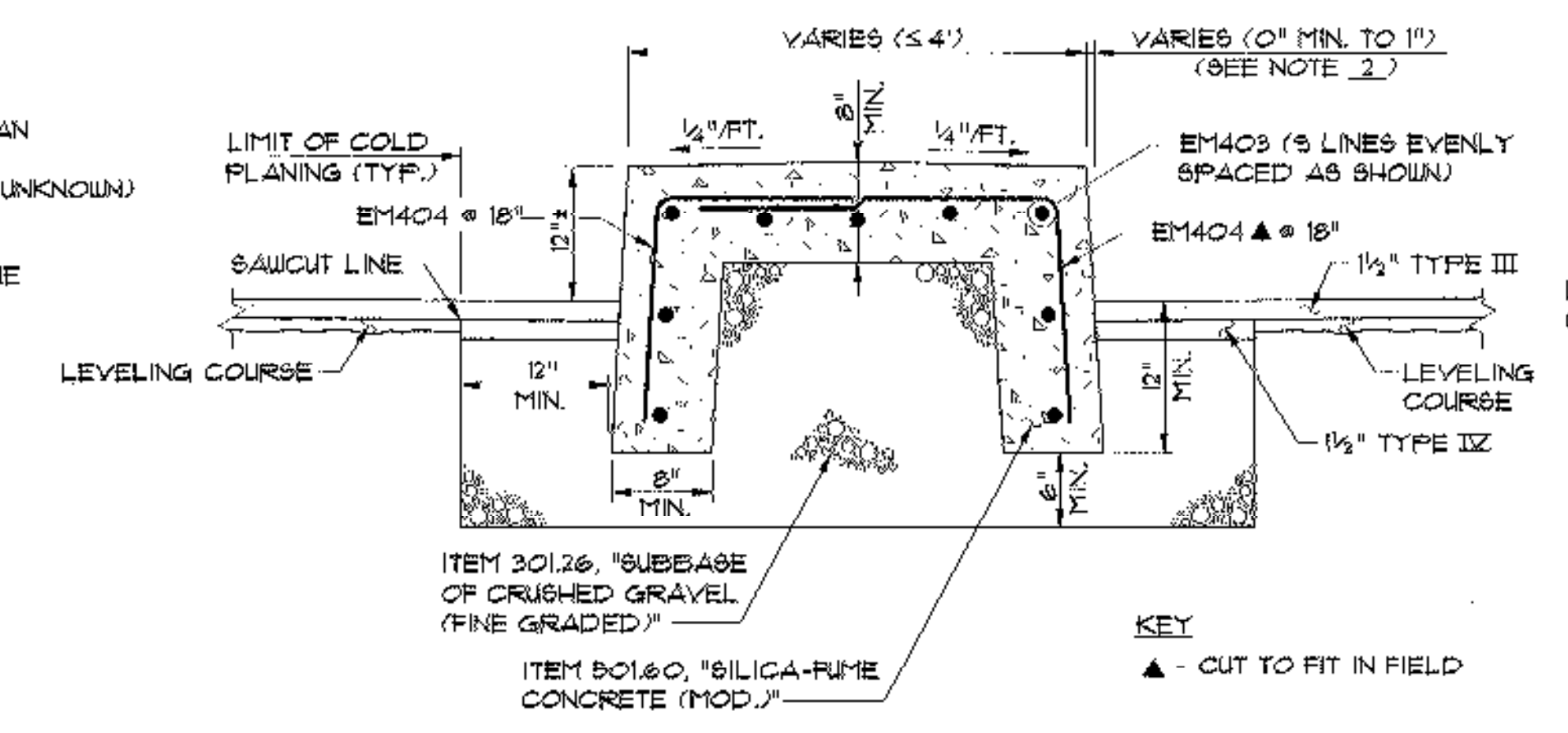
* EXISTING ADELPHIA FIBER OPTIC CABLE RUNS RIGHT BENEATH NEW GUARD RAIL. ADELPHIA WILL MOVE TO OTHER SIDE OF ELECTRICAL CONDUIT



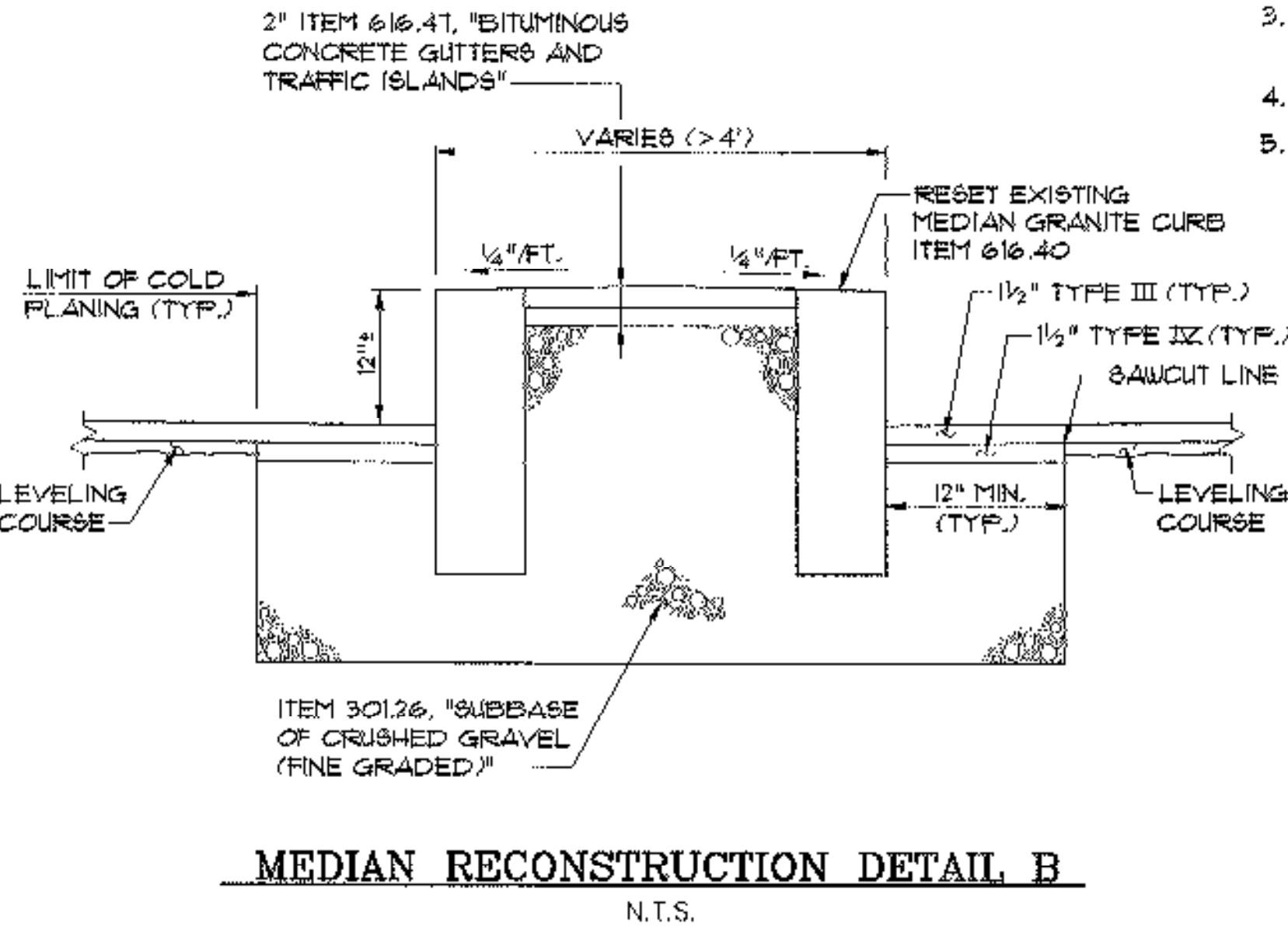
APPROACH PAVEMENT TRANSITION DETAIL
N.T.S.



MEDIAN REMOVAL DETAIL
N.T.S.

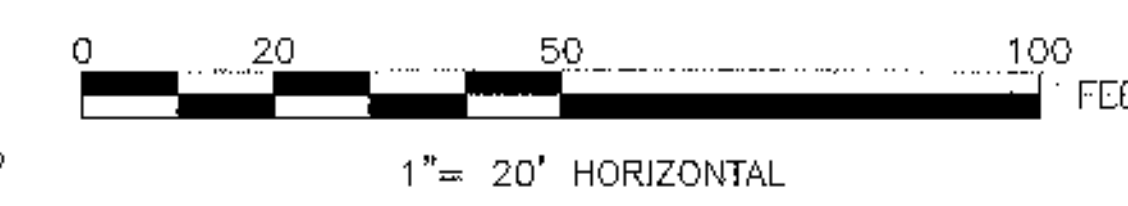


MEDIAN RECONSTRUCTION DETAIL A
N.T.S.



MEDIAN RECONSTRUCTION DETAIL B
N.T.S.

- NOTES:**
- FOR APPROACH ROADWAY NOTES SEE SHEET 44.
 - THE BATTER OF THE CONCRETE MEDIAN CURB SHALL TRANSITION FROM 1" TO 0" WITHIN THE FINAL TEN FEET AT EACH END, IN ORDER TO MATCH TO THE ADJACENT VERTICAL GRANITE CURB.
 - LANE AND PAVEMENT MARKINGS NOT SHOWN FOR CLARITY. SEE SHEETS 41 & 48 FOR PAVEMENT MARKINGS LAYOUT.
 - SEE SHEET 41 FOR LEGEND.
 - COLD PLANING AND PAVING EXTENDS BEYOND THE LIMIT SHOWN AT STA. 34+60. SEE SHEETS 54A, 54B, AND 54C.



**STATE OF VERMONT
AGENCY OF TRANSPORTATION**

| | |
|--------------------------|---------------|
| Town Of SOUTH BURLINGTON | Bridge No. 68 |
| Highway No. U.S. 2 | Log Sta. |
| | Surv. Sta. |

U.S. 2 OVER I-89
APPROACH ROADWAY PLAN (2 OF 2)

| | |
|-----------------------------|---|
| Designed By A. SETAS | Drawn By B.J. MASSE |
| Checked By T.S. BRYANT 2/00 | Bridge Design Supervisor C.D. BAKER Date 2/00 |

| | |
|--------------------------|--------------------------|
| PROJECT SOUTH BURLINGTON | PROJECT NO. IM DECK (36) |
|--------------------------|--------------------------|

| | |
|------------------------------|----------------|
| VHB Cad Drawing No. 50929RDP | Date 2/00 |
| Bridge Sheet No. | Sheet 45 of 15 |

VANASSE HANGEN BRUSTLIN, INC.