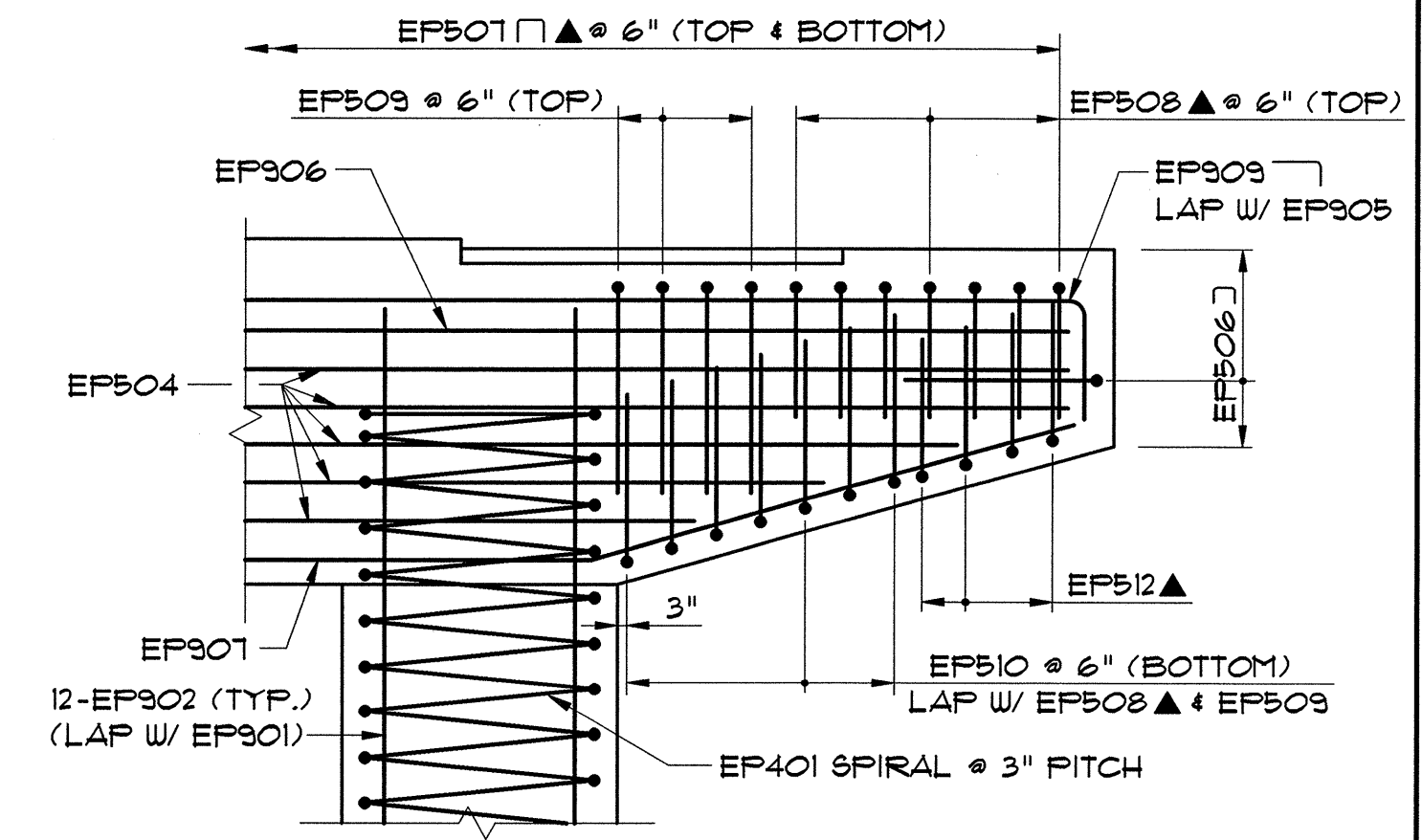
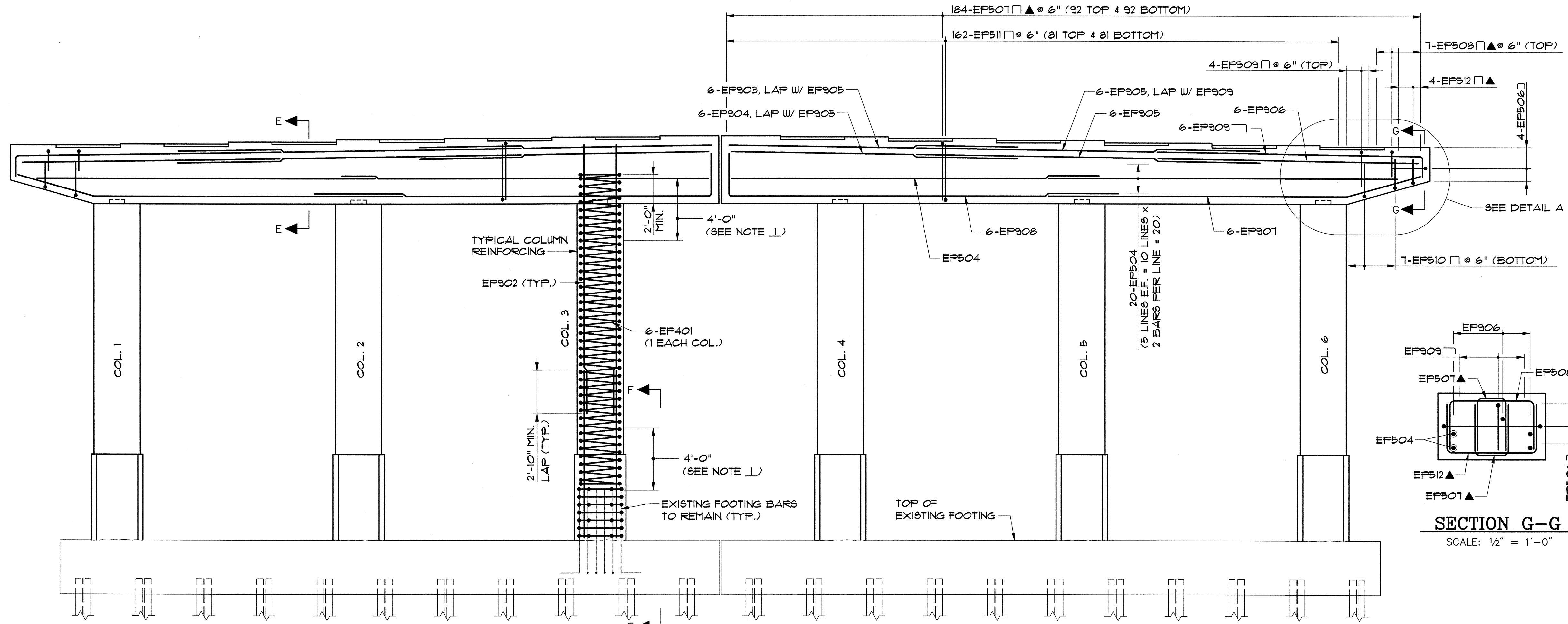


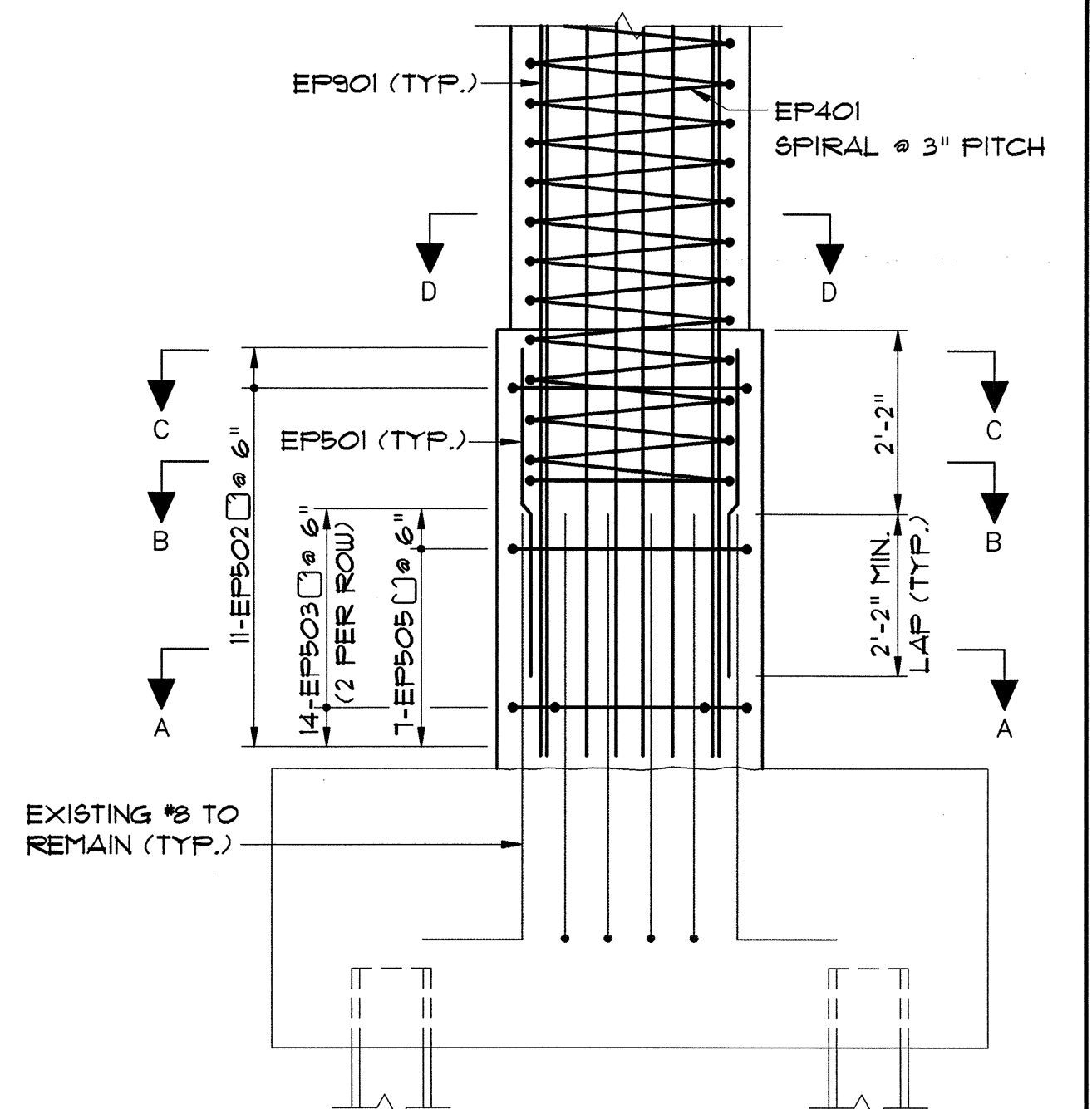
PIER CAP PLAN
SCALE: 1/4" = 1'-0"



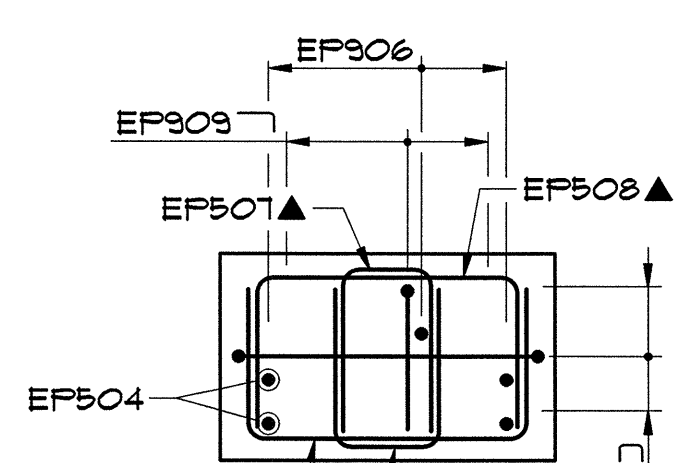
DETAIL A
SCALE: 1/2" = 1'-0"



TYPICAL PIER REINFORCEMENT
SCALE: 1/4" = 1'-0"

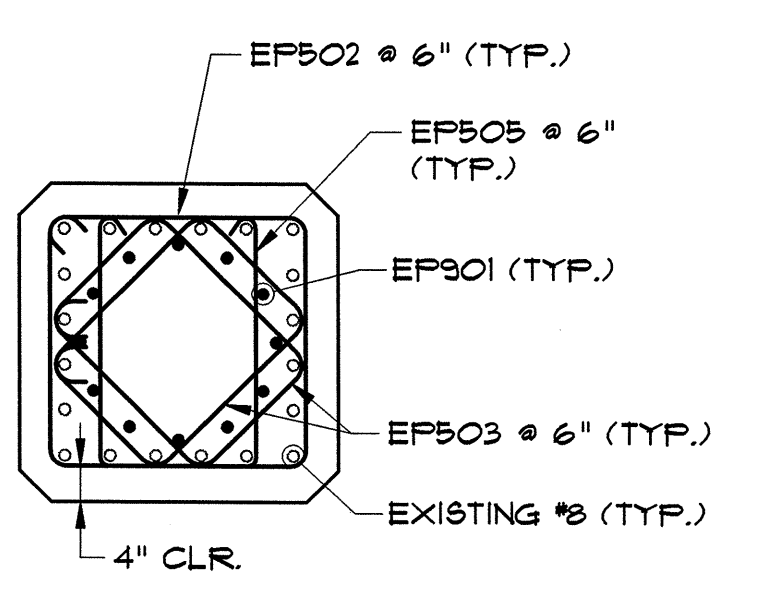


SECTION F-F
SCALE: 1/2" = 1'-0"

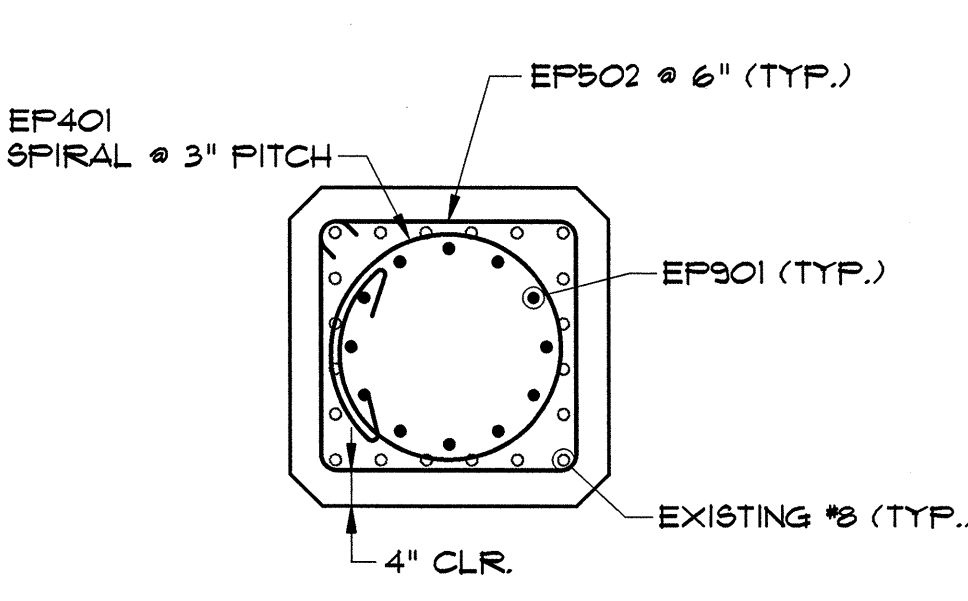


SECTION G-G
SCALE: 1/2" = 1'-0"

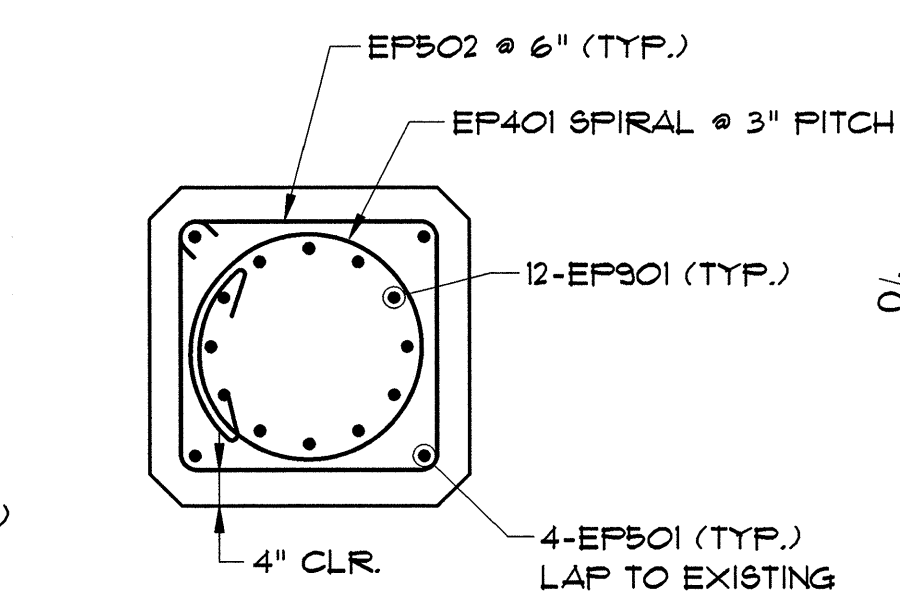
- NOTES:**
- NO LAP SPLICES IN THE COLUMN SPIRAL REINFORCEMENT SHALL BE ALLOWED WITHIN THE LIMITS SHOWN. ALL COLUMN SPIRAL REINFORCEMENT LAP SPLICES SHALL BE AS SHOWN ON SPIRAL LAP SPLICE DETAIL.
 - NOTE NOT USED.
 - SEE BRIDGE SHEET 23 FOR REINFORCEMENT NOTES.
 - SEE BRIDGE SHEETS 22 AND 23 FOR BEARING ANCHOR BOLT LAYOUT.



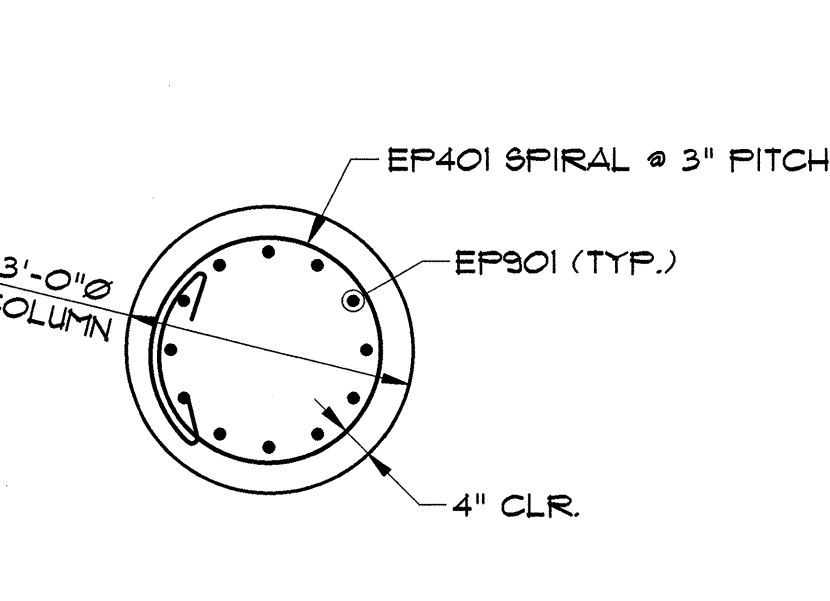
SECTION A-A
SCALE: 1/2" = 1'-0"



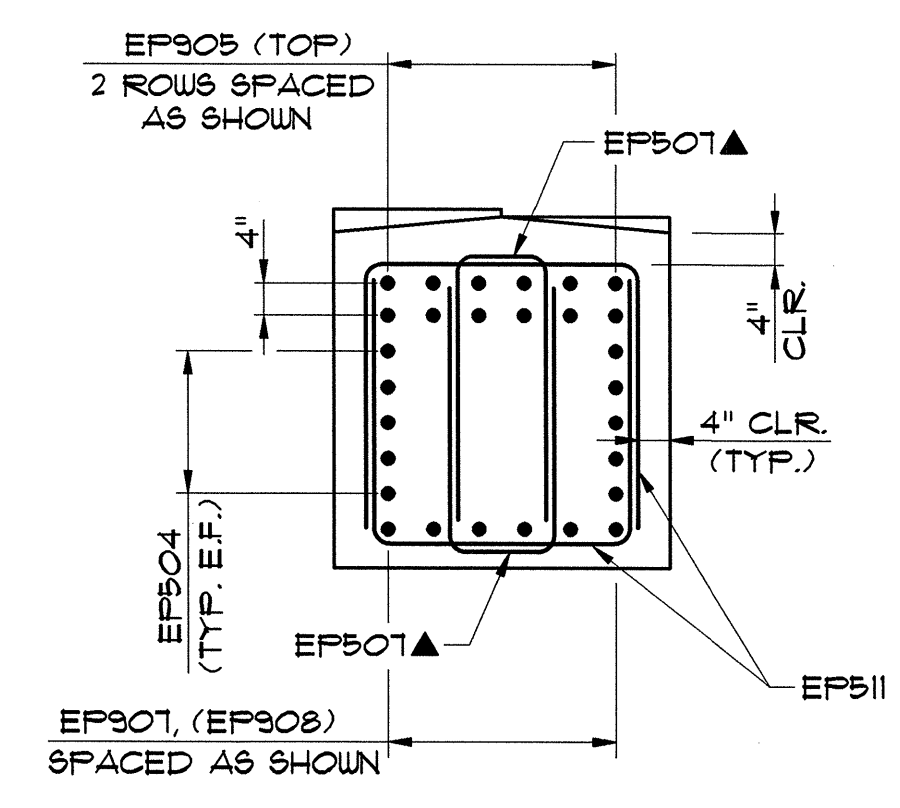
SECTION B-B
SCALE: 1/2" = 1'-0"



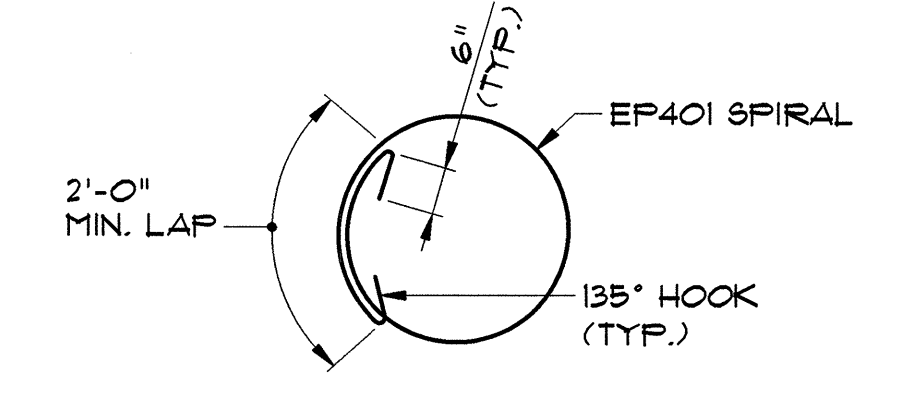
SECTION C-C
SCALE: 1/2" = 1'-0"



SECTION D-D
SCALE: 1/2" = 1'-0"



SECTION E-E
SCALE: 1/2" = 1'-0"



SPIRAL LAP SPLICE DETAIL
SCALE: 1/2" = 1'-0"

▲ = BARS TO BE CUT IN FIELD

STATE OF VERMONT AGENCY OF TRANSPORTATION		
Town Of	SOUTH BURLINGTON	Bridge No. 68
Highway No.	U.S. 2	Log Sta.
		Surv. Sta.
U.S. 2 OVER I-89		
PIER REINFORCEMENT		
Designed By	A. SETAS	Drawn By
Checked By	T.S. BRYANT	Date
	1/00	Bridge Design Supervisor
		C.D. BAKER
		Date
		1/00
PROJECT	SOUTH BURLINGTON	PROJECT NO.
		IM DECK(36)
VHB Cad Drawing No.	50929PREF	Date
Bridge Sheet No.		1/00
		Sheet 31 of 15

VANASSE HANGEN BRUSTLIN, INC.