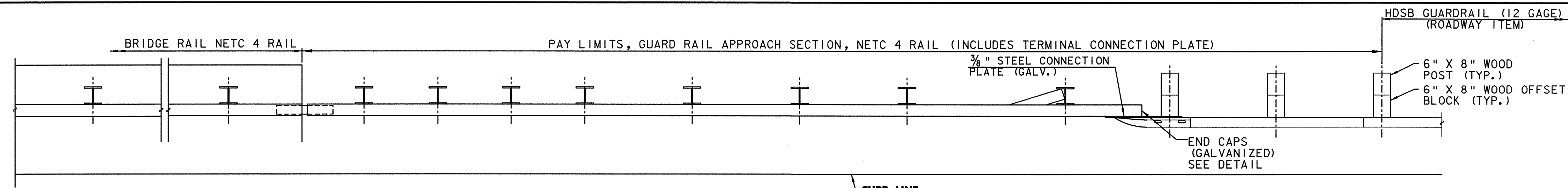
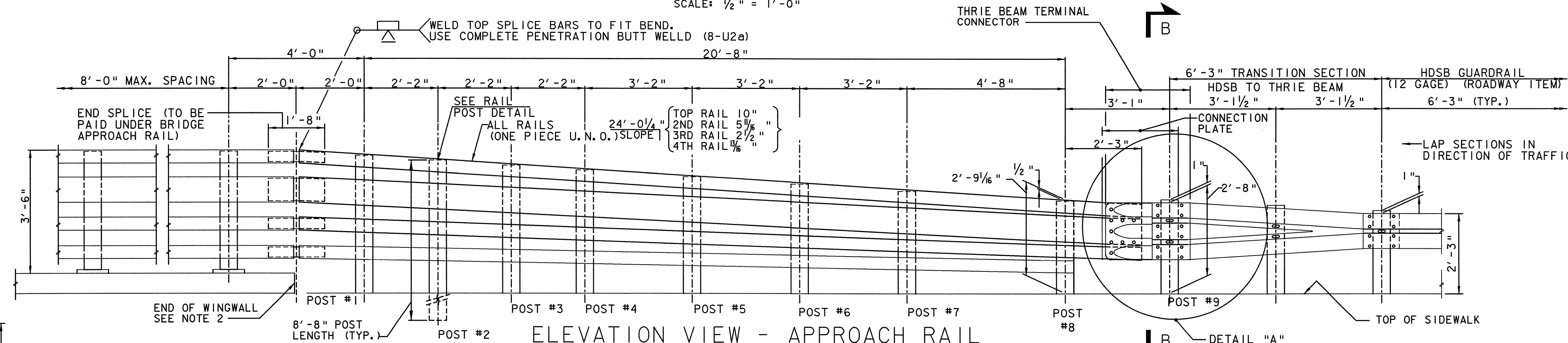


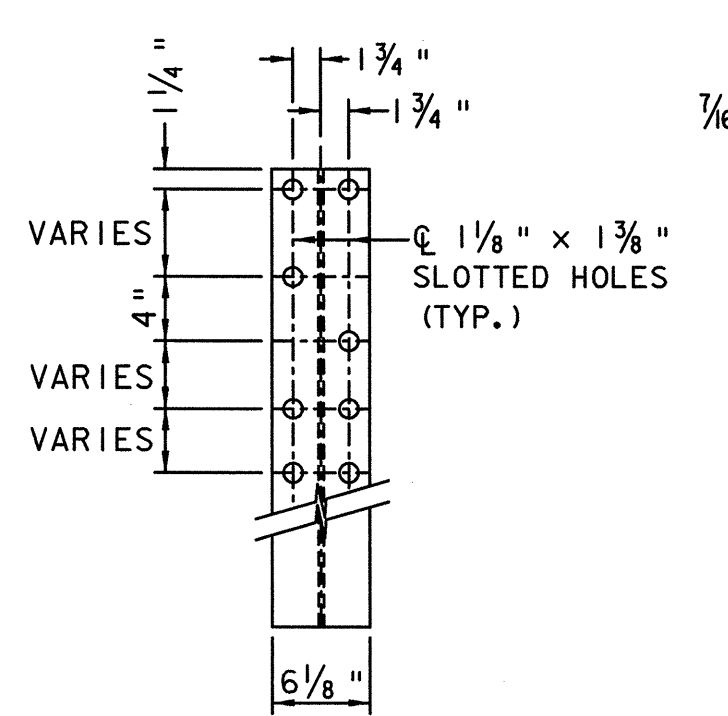
SECTION B-B (POST RAIL ASSEMBLY)
SCALE: 1" = 1'-0"



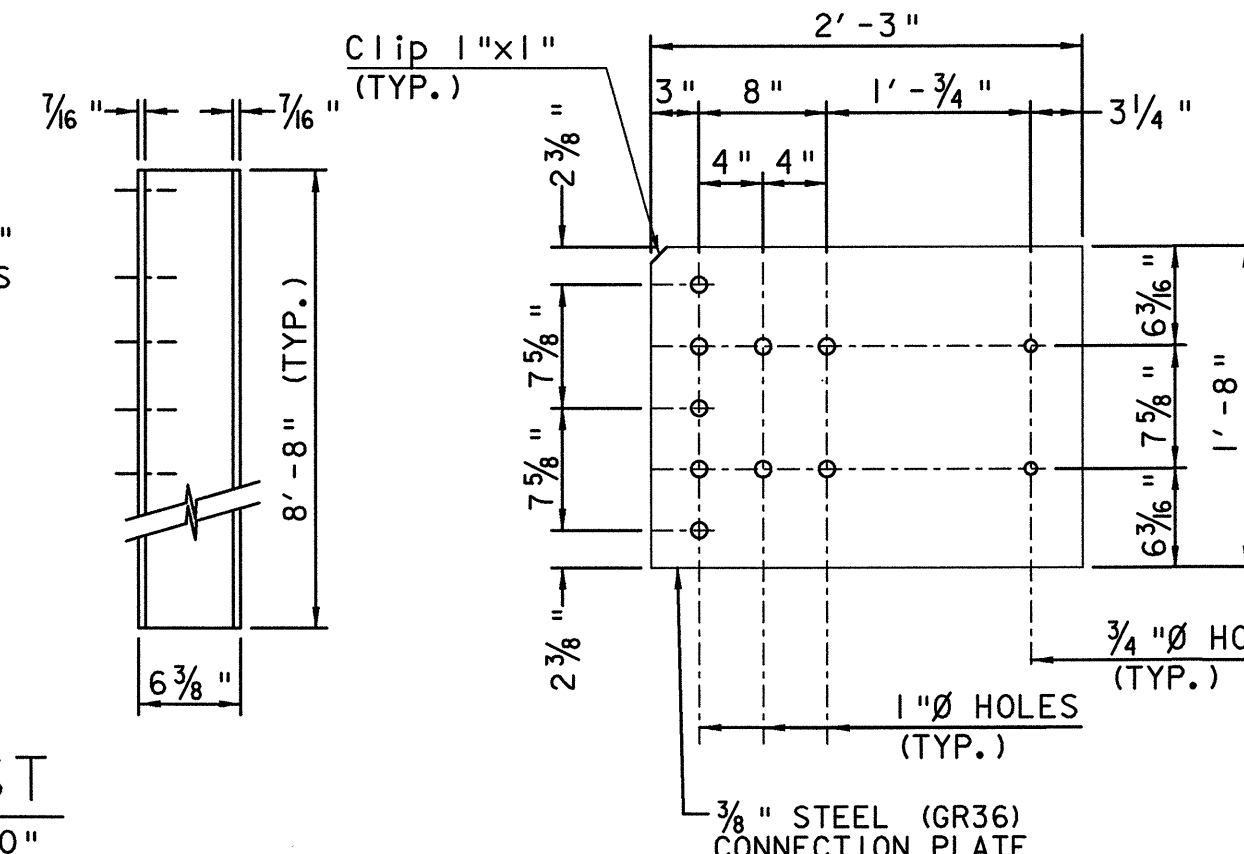
PLAN VIEW - APPROACH RAIL
SCALE: 1/2" = 1'-0"



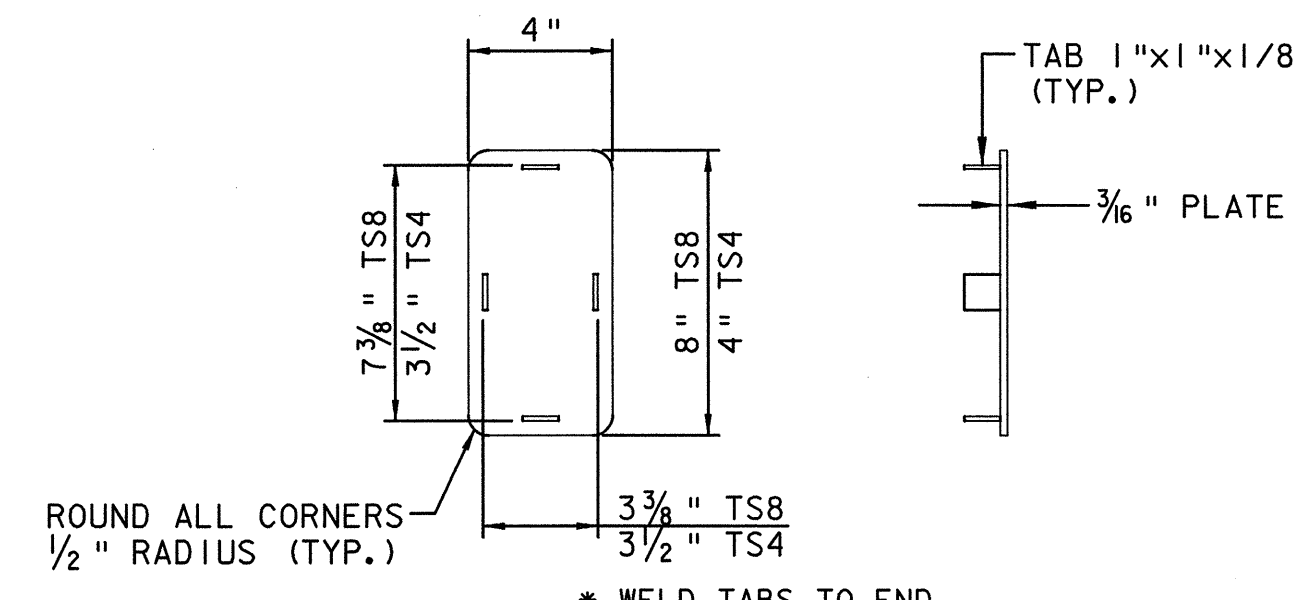
ELEVATION VIEW - APPROACH RAIL
SCALE: 1/2" = 1'-0"



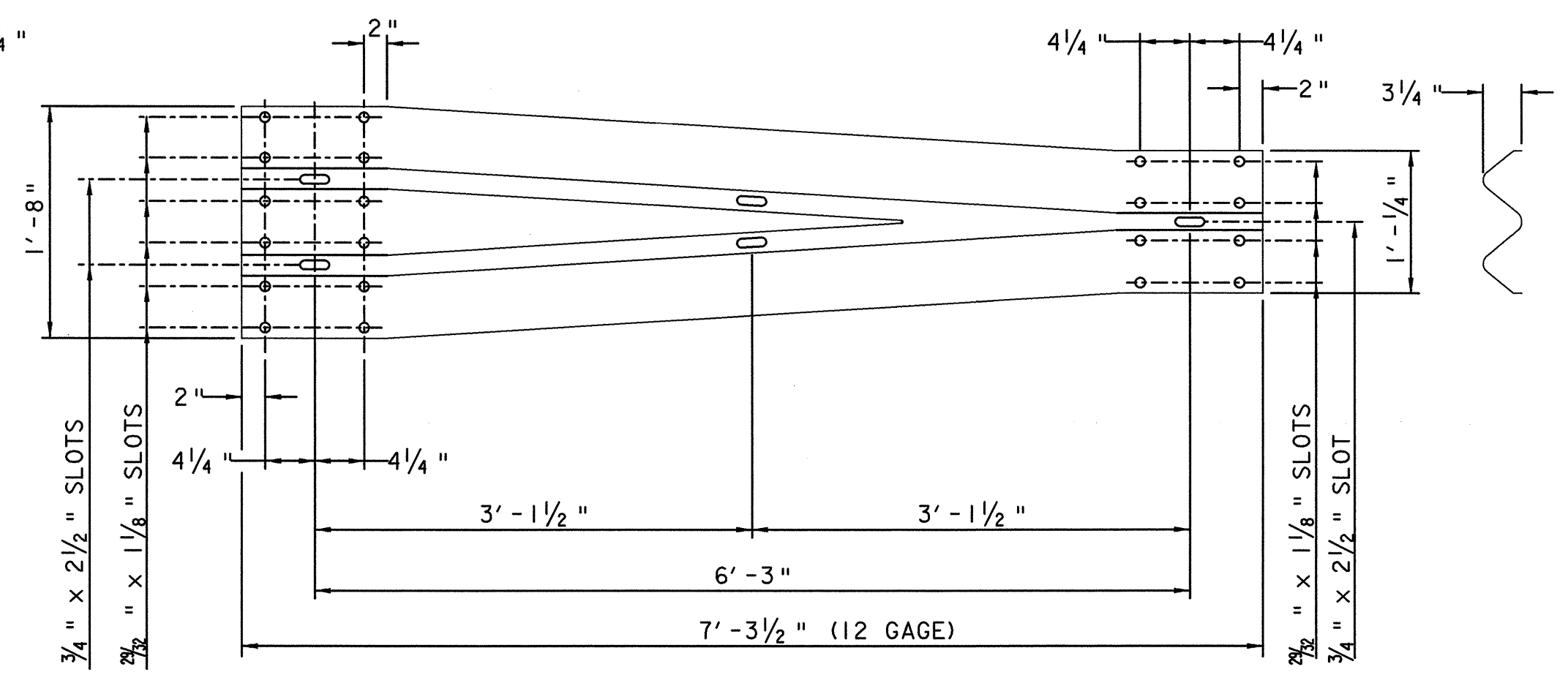
RAIL POST
SCALE: 1" = 1'-0"



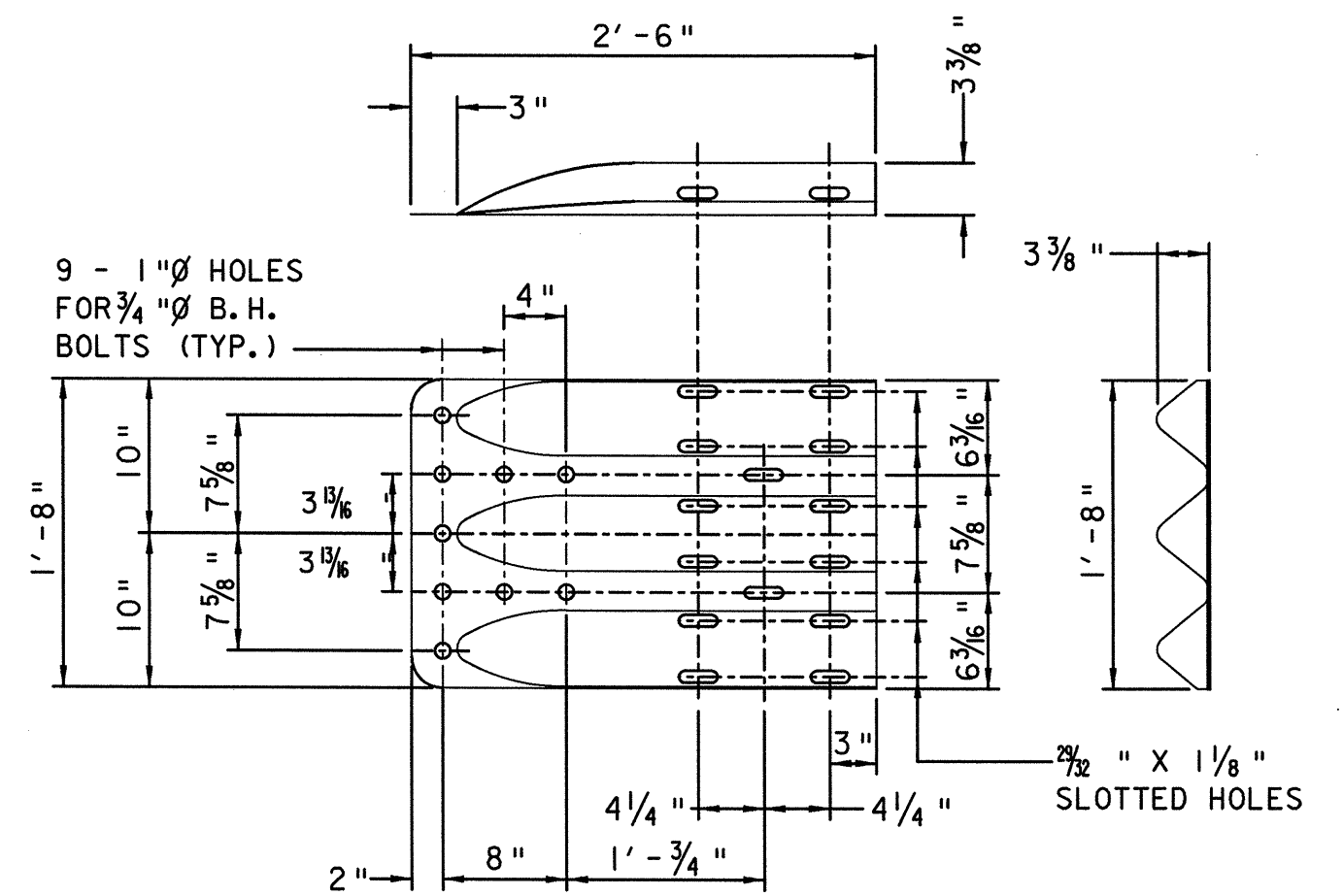
CONNECTION PLATE
SCALE: 1" = 1'-0"



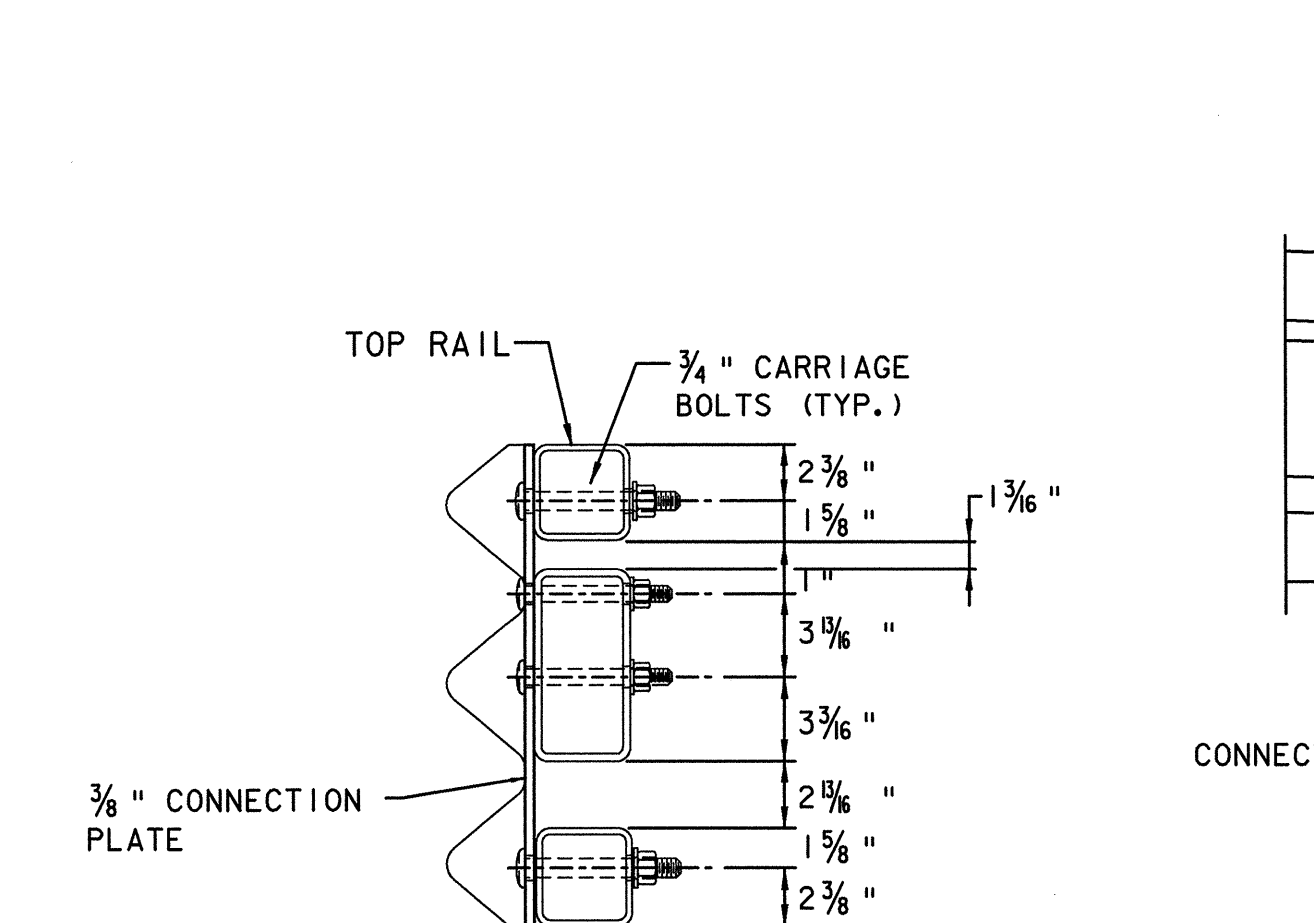
END CAP DETAIL
SCALE: 1 1/2" = 1'-0"



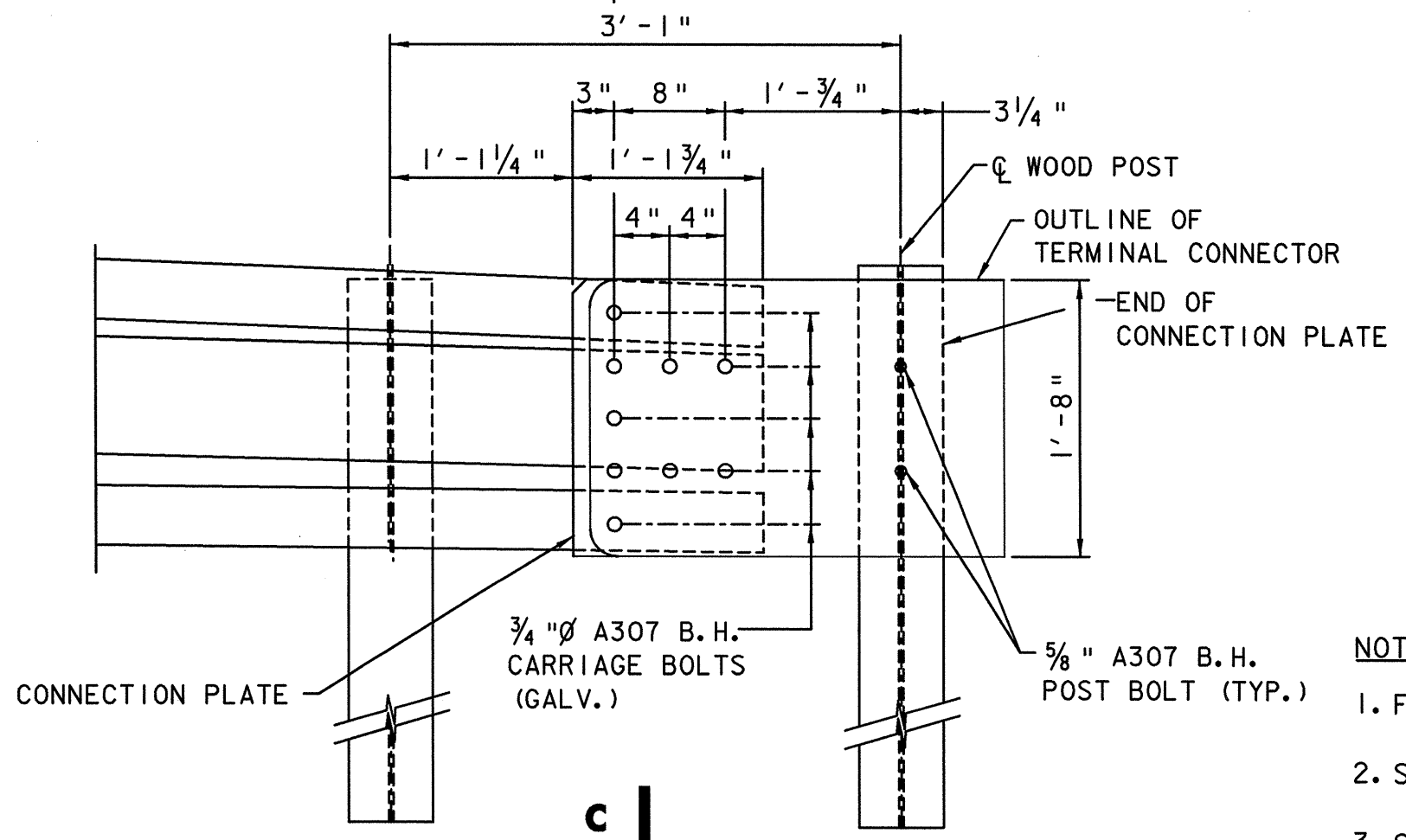
THRIE-BEAM TO HDSB TRANSITION SECTION
SCALE: 1" = 1'-0"



THRIE-BEAM TERMINAL CONNECTOR
SCALE: 1" = 1'-0"



SECTION C-C (CONNECTION PLATE)
SCALE: 1" = 1'-0"



DETAIL A
SCALE: 1" = 1'-0"

- NOTES:
- FOR NOTES SEE SHEET 24.
 - SEE EXISTING PLANS FOR LOCATION OF WINGWALL.
 - SEE SHEET 26 FOR BRIDGE AND APPROACH RAIL LAYOUT.

STATE OF VERMONT AGENCY OF TRANSPORTATION	
Town Of SOUTH BURLINGTON	Bridge No. 68
Highway No. U.S. 2	Log Sta. Surv. Sta.
U.S. 2 OVER I-89	
GUARD RAIL APPROACH SECTION, N.E.T.C. 4 RAIL	
Designed By VAOT	Drawn By C. L. CILLEY
Checked By VAOT	Bridge Design Supervisor Date
Project SOUTH BURLINGTON	Project No. IM DECK (36)
VHB Cad Drawing No. BR-122	Date 1/00
Bridge Sheet No.	Sheet 25 of 75