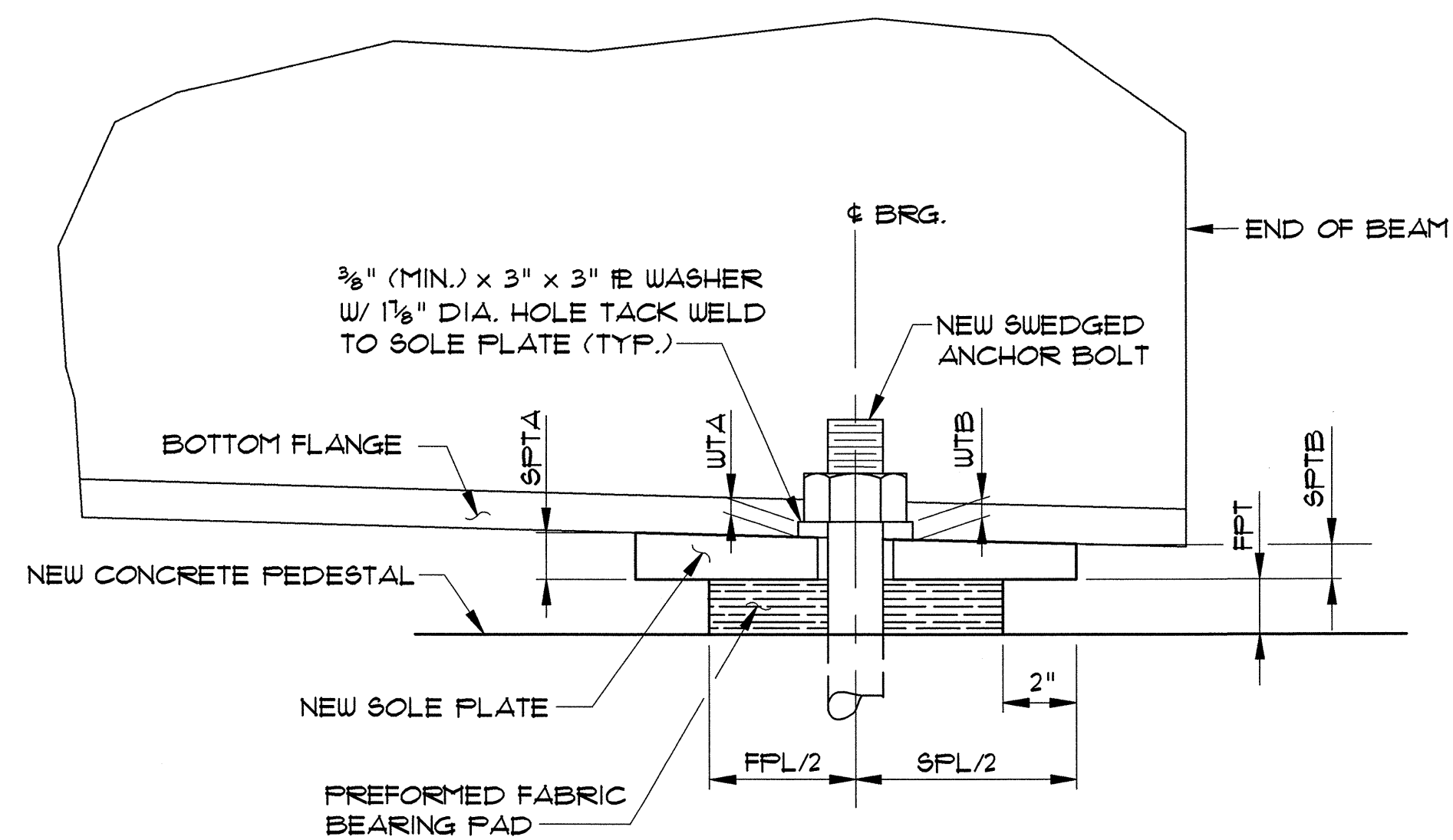
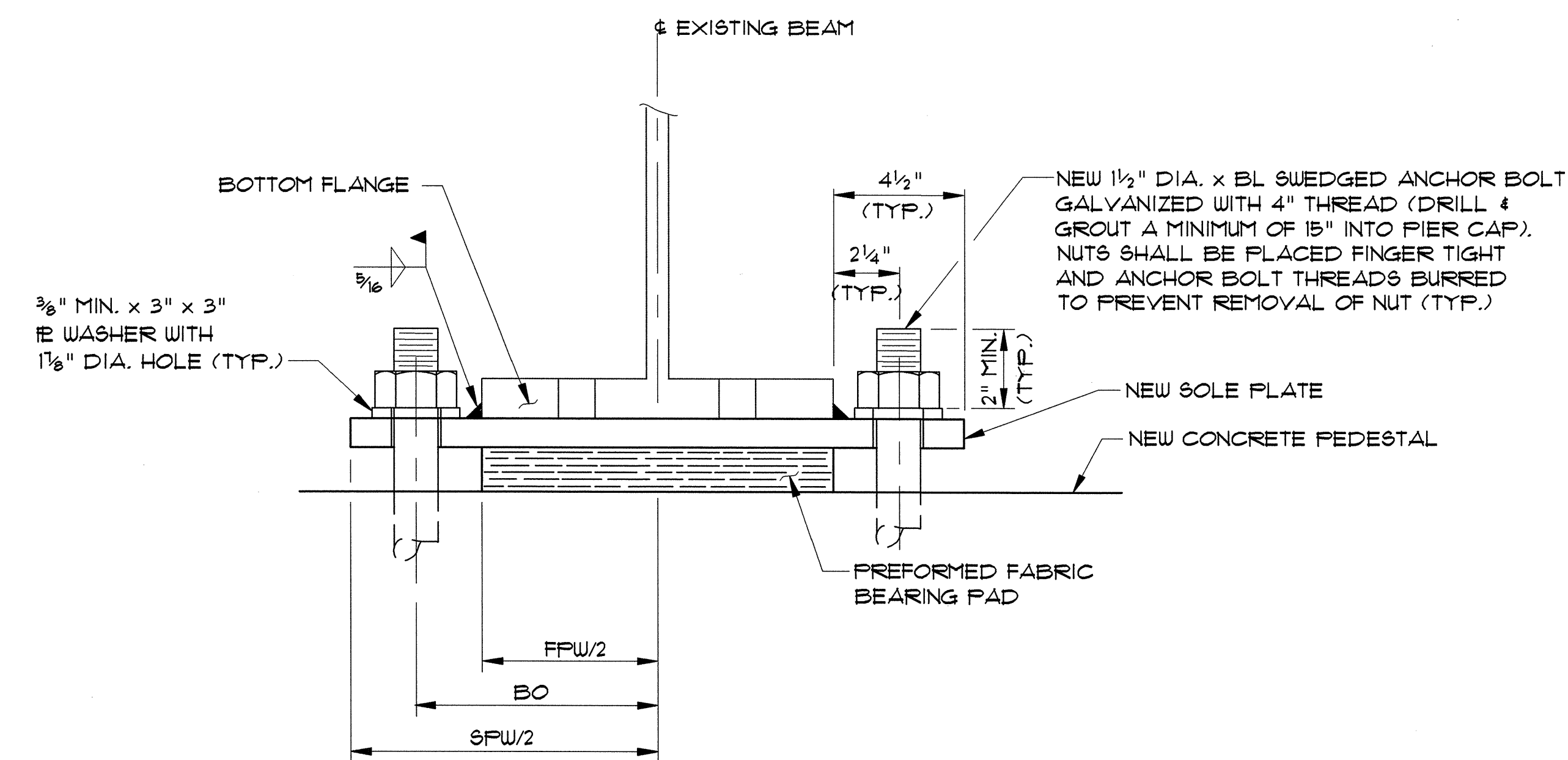


PLAN VIEW
(NEW ANCHOR BOLTS NOT SHOWN FOR CLARITY)
NTS



SECTION A-A
NTS

BRIDGE NO.	PIER NO.	SPAN NO.	BEAM LINE	SPAN LENGTH	BEAM	BOTT. FLG. WIDTH (BFW)	FABRIC BRG. PAD			SOLE PLATE				WASHER THICKNESS		NEW BRG. HEIGHT	ANCHOR BOLT OFFSET (BO)	ANCHOR BOLT LENGTH (BL)	Δ
							WIDTH (FFW)	LENGTH (FPL)	THICK. (FFT)	WIDTH (SPW)	LENGTH (SPL)	THICK.		(WTA)	(WTB)				
68	2	2	1-14	74'	36WF10	12"	12"	10"	2 1/2"	21"	14"	1"	3/4"	3/8"	3/8"	3 3/8"	8 1/4"	1'-10"	93°59'36"
68	3	3	1-14	74'	36WF10	12"	12"	10"	2 1/2"	21"	14"	1"	3/4"	3/8"	3/8"	3 3/8"	8 1/4"	1'-10"	93°00'24"
TOTAL NO. OF BRGS. = 28																			



SECTION B-B
NTS

- NOTES:**
1. PLUG EXISTING HOLES IN BEAM FLANGES WITH POLYURETHANE SEALER (SUBSIDIARY).
 2. BURRED THREADS SHALL BE TOUCHED UP WITH ZINC-RICH PAINT AFTER FINAL ASSEMBLY (SUBSIDIARY).
 3. ALL BEARING COMPONENTS ARE NEW EXCEPT AS NOTED.

DETAILS FOR REPLACING EXISTING FIXED BEARINGS AT PIERS WITH FABRIC BEARING PADS

STATE OF VERMONT AGENCY OF TRANSPORTATION

Town Of SOUTH BURLINGTON	Bridge No. 68
Highway No. U.S. 2	Log Sta. Surv. Sta.
U.S. 2 OVER I-89	
BEARING TREATMENT DETAIL 'Y'	
Designed By W.M. MOSHER	Drawn By B.J. MASSE
Checked By S.M. HOGDON	Date 1/00 Bridge Design Supervisor C.D. BAKER Date 1/00
PROJECT SOUTH BURLINGTON	PROJECT NO. IM DECK (36)