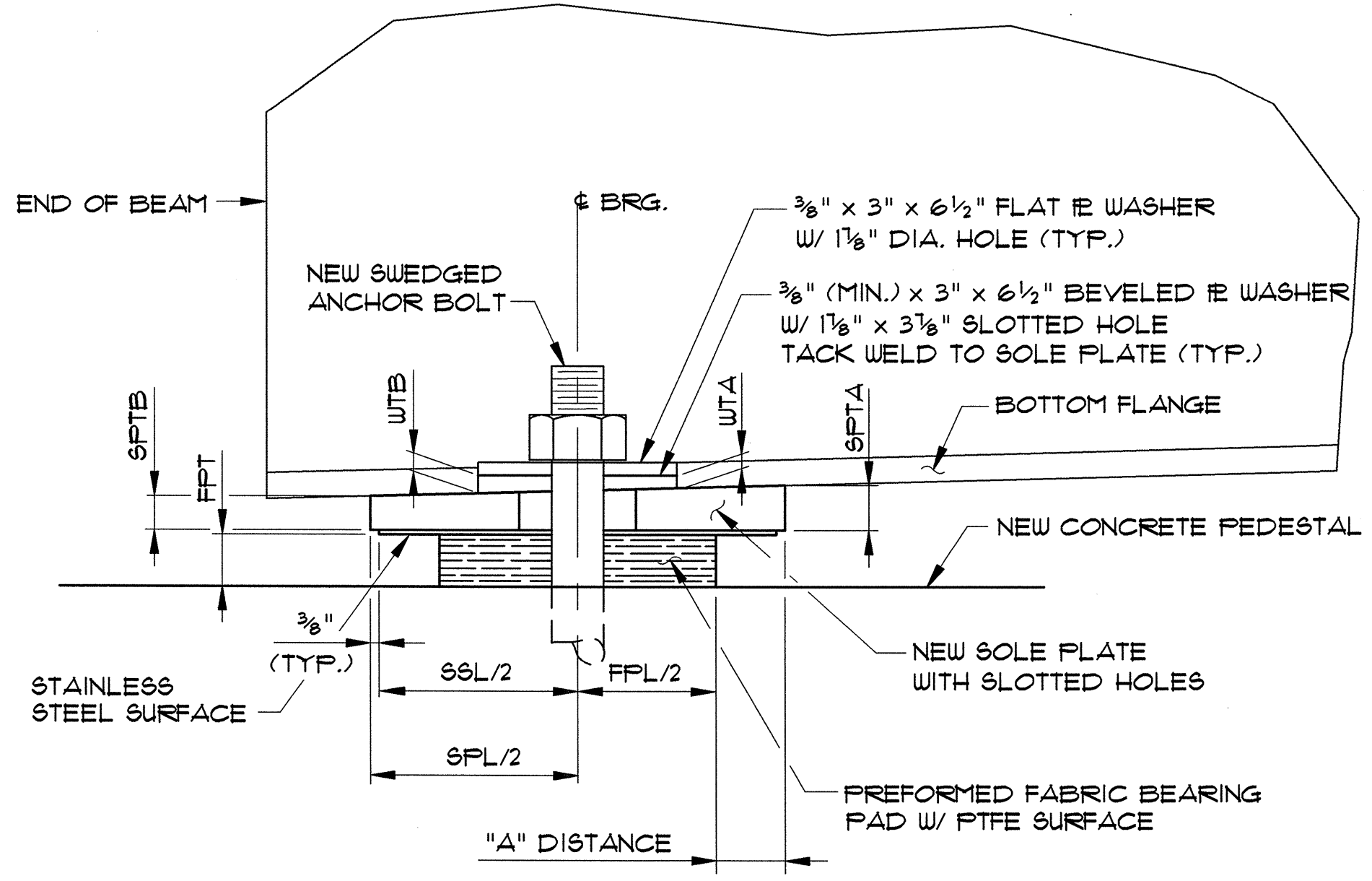


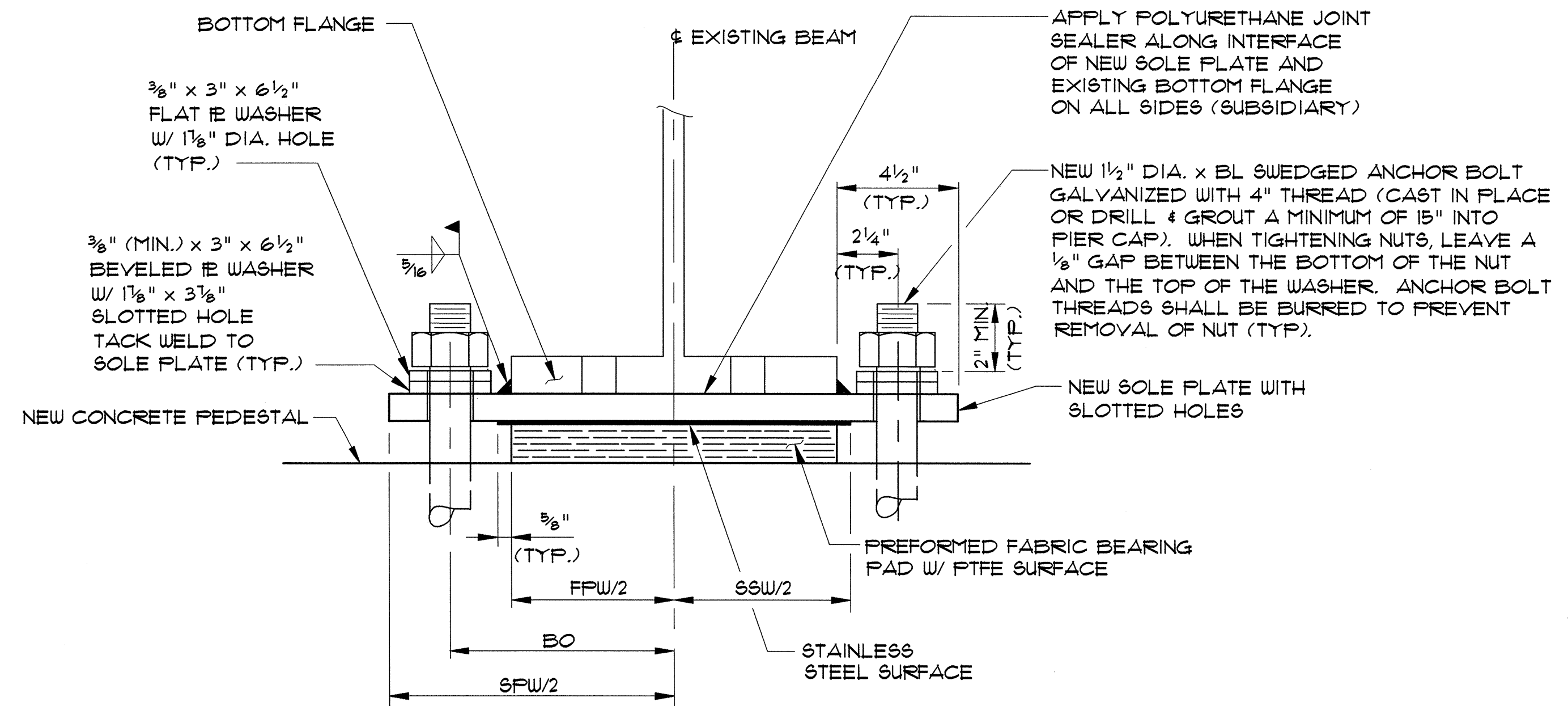
PLAN VIEW
(NEW ANCHOR BOLTS NOT SHOWN FOR CLARITY)
NTS



SECTION A-A
NTS

BRIDGE NO.	PIER NO.	SPAN NO.	EXIST. EXP. / FIXED	BEAM LINE	SPAN LENGTH	BEAM	BOTT. FLG. WIDTH (BFW)	FABRIC BRG. PAD WITH PTFE SURFACE			STAINLESS STEEL		SOLE PLATE		BEVELED WASHER THICK.		NEW BRG. HEIGHT	ANCHOR BOLT OFFSET (BO)	ANCHOR BOLT LENGTH (BL)	Δ	"A" DISTANCE													
								WIDTH (FFW)	LENGTH (FFL)	THICK. (FFT)	WIDTH (SSW)	LENGTH (SSL)	WIDTH (SPW)	LENGTH (SPL)	THICK. (SPTA)	THICK. (SPTB)					(UTA)	(UTB)	TEMPERATURE (°F)											
																					0	15	30	45	60	75	90							
68	1	1	FIXED	1-14	54'	36WF10	12"	12"	10"	2 1/2"	13 1/4"	13 1/4"	21"	14"	1"	3/4"	3/8"	1/2"	3 3/16"	8 1/4"	1'-10"	84°50'48"	2 3/8"	2 1/8"	2 1/8"	2"	1 9/16"	1 7/8"	1 3/8"					
68	1	2	EXP.	1-14	74'	36WF10	12"	12"	10"	2 1/2"	13 1/4"	13 1/4"	21"	14"	3/4"	1"	3/8"	3 3/16"	8 1/4"	1'-10"	83°58'36"	2 1/4"	2 3/8"	2 1/8"	2"	1 9/16"	1 9/16"	1 3/4"						
68	2	3	EXP.	1-14	74'	36WF10	12"	12"	10"	2 1/2"	13 1/4"	13 1/4"	21"	14"	3/4"	1"	1/2"	3 3/16"	8 1/4"	1'-10"	83°00'24"	2 1/4"	2 3/8"	2 1/8"	2"	1 9/16"	1 9/16"	1 3/4"						
68	3	4	EXP.	1-14	59'	36WF10	12"	12"	10"	2 1/2"	13 1/4"	13 1/4"	21"	14"	3/4"	1"	1/2"	3 3/16"	8 1/4"	1'-10"	82°07'12"	2 3/8"	2 1/8"	2 1/8"	2"	1 9/16"	1 7/8"	1 3/8"						
TOTAL NO. OF BRGS. = 56																																		

* SEE NOTE 3.



SECTION B-B
NTS

- NOTES:**
1. PLUG EXISTING HOLES IN BEAM FLANGES WITH POLYURETHANE SEALER (SUBSIDIARY).
 2. BURRED THREADS SHALL BE TOUCHED UP WITH ZINC-RICH PAINT AFTER FINAL ASSEMBLY (SUBSIDIARY).
 3. BEARING HEIGHT INCLUDES STAINLESS STEEL PLATE.
 4. ALL BEARING COMPONENTS ARE NEW EXCEPT AS NOTED.

DETAILS FOR REPLACING EXISTING EXPANSION AND FIXED BEARINGS AT PIERS WITH FABRIC BEARING PADS W/ PTFE SURFACE

STATE OF VERMONT AGENCY OF TRANSPORTATION

Town Of SOUTH BURLINGTON Bridge No. 68
 Highway No. U.S. 2 Log Sta. Surv. Sta.
 U.S. 2 OVER I-89

BEARING TREATMENT DETAIL 'X'

Designed By W.M. MOSHER Drawn By B.J. MASSE
 Checked By Date Bridge Design Supervisor
 S.M. HODGDON 1/00 C.D. BAKER Date 1/00

PROJECT SOUTH BURLINGTON IM DECK (36)
 VHB Cad Drawing No. 50929BTX Date 1/00
 Bridge Sheet No. Sheet 22 of 75