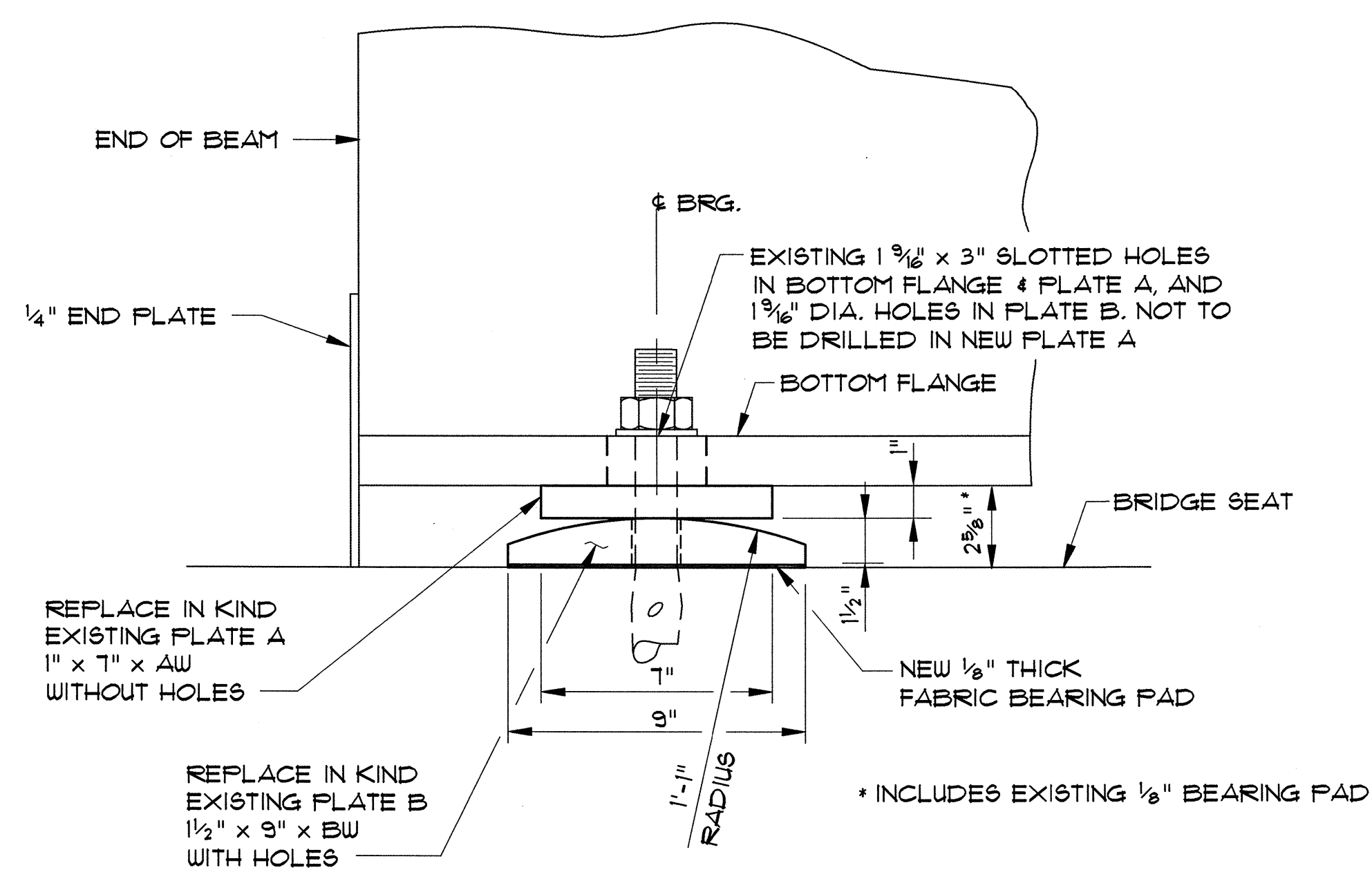
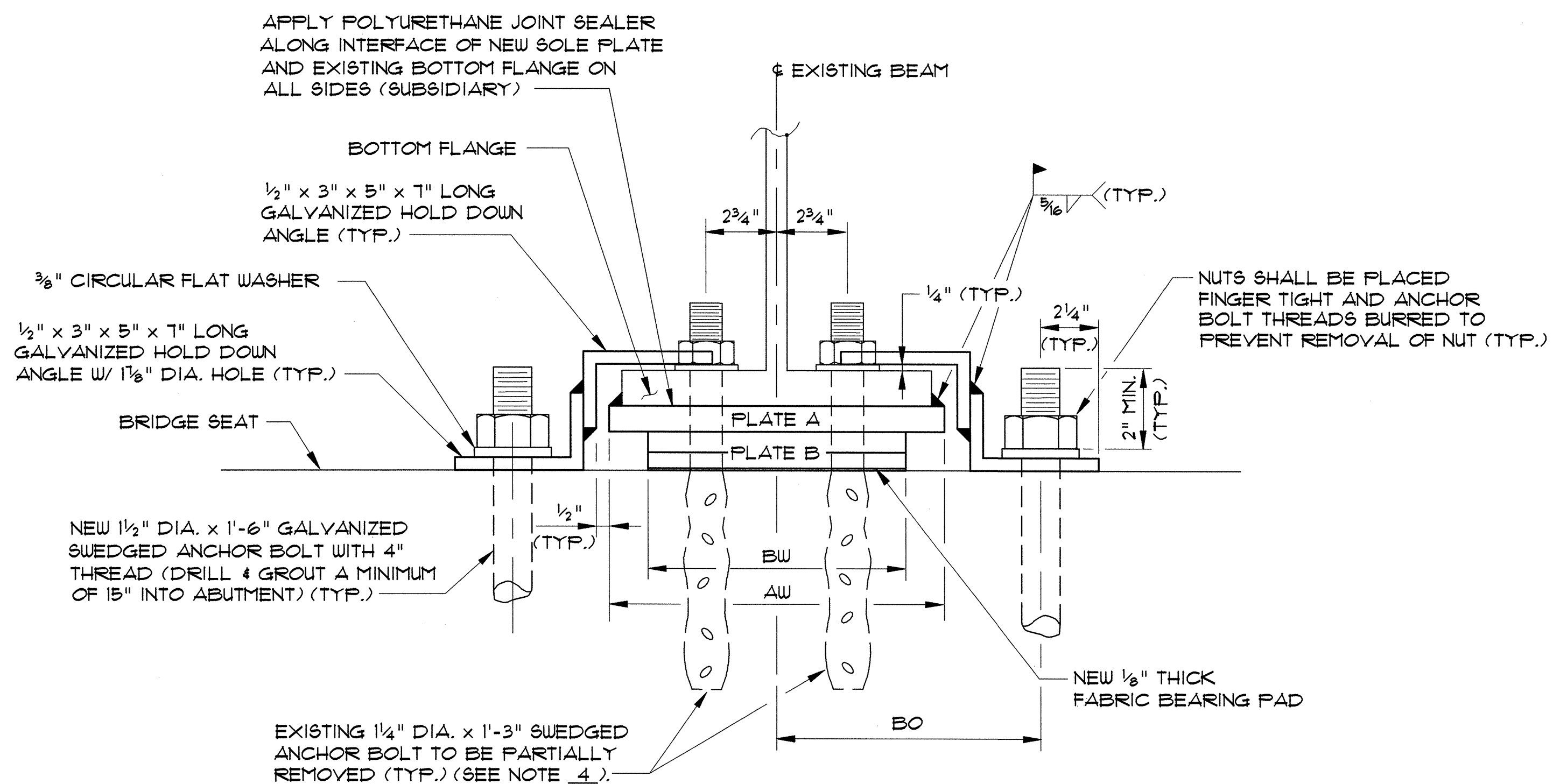


PLAN VIEW
NTS



SECTION A-A
(HOLD-DOWN ANGLES NOT SHOWN FOR CLARITY)
NTS



SECTION B-B
NTS

BRIDGE NO.	ABUT. NO.	BEAM LINE	BEAM	SPAN LENGTH	BOTT. FLG. WIDTH (BFW)	PLATE A WIDTH (AW)	PLATE B WIDTH (BW)	ANCHOR BOLT OFFSET (BO)	Δ
68	1	14	36WF50	54'	12"	13"	10"	10 1/4"	94°50'48"
TOTAL NO. OF BRGS. = 1									

**DETAILS FOR REPLACING EXISTING EXPANSION BEARINGS
AT ABUTMENTS IN KIND**

NOTES:

1. PLUG EXISTING HOLES IN BEAM FLANGES WITH POLYURETHANE SEALER (SUBSIDIARY).
2. BURRED THREADS SHALL BE TOUCHED UP WITH ZINC-RICH PAINT AFTER FINAL ASSEMBLY (SUBSIDIARY).
3. BEARING HEIGHT ASSUMES A 3/16" THICK STAINLESS STEEL PLATE.
4. EXISTING ANCHOR BOLTS SHALL BE CUT OFF 1/2" ABOVE THE BRIDGE SEAT. THE 1/2" OF EACH ANCHOR BOLT THAT REMAINS WILL EXTEND INTO THE HOLES IN NEW PLATE B TO KEEP IT FROM SLIDING.

**STATE OF VERMONT
AGENCY OF TRANSPORTATION**

Town Of	SOUTH BURLINGTON	Bridge No.	68
Highway No.	U.S. 2	Log Sta.	
		Surv. Sta.	

U.S. 2 OVER I-89			
BEARING TREATMENT DETAIL 'A'			
Designed By	T.S. BRYANT	Drawn By	B.J. MASSÉ
Checked By	S.M. HODGDON	Date	1/00
		Bridge Design Supervisor	C.D. BAKER
		Date	1/00
PROJECT	SOUTH BURLINGTON	PROJECT NO.	IM DECK (36)
VHB Cad Drawing No.	50929BTA	Date	1/00
Bridge Sheet No.		Sheet	20 of 75