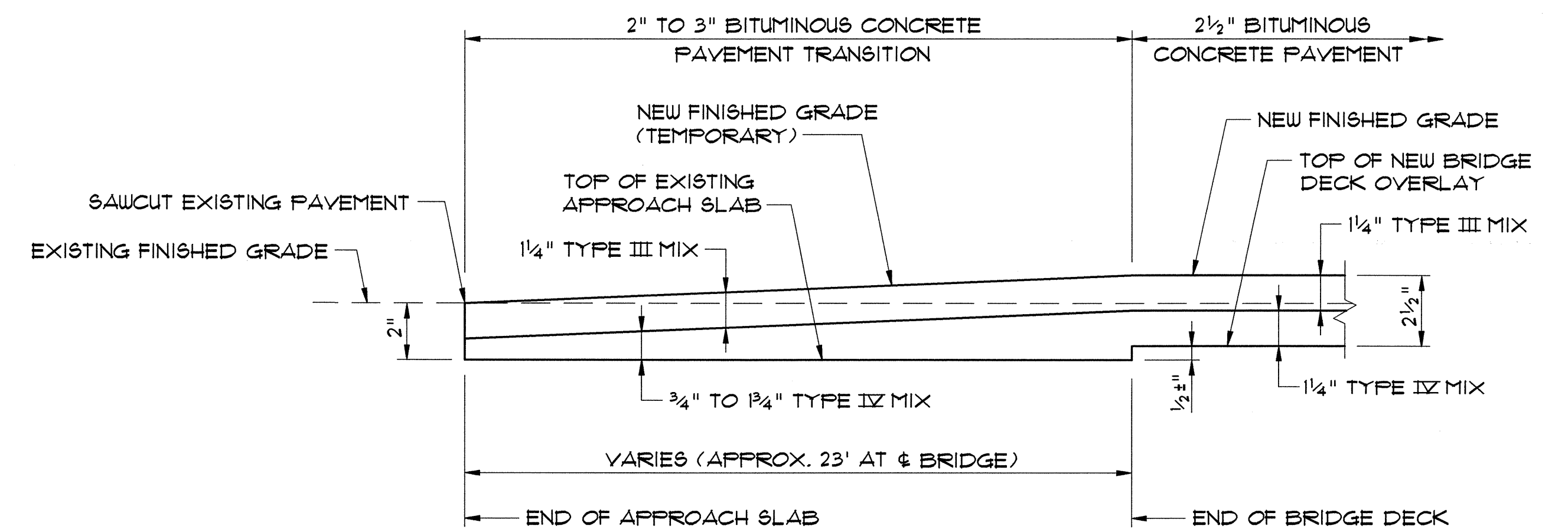


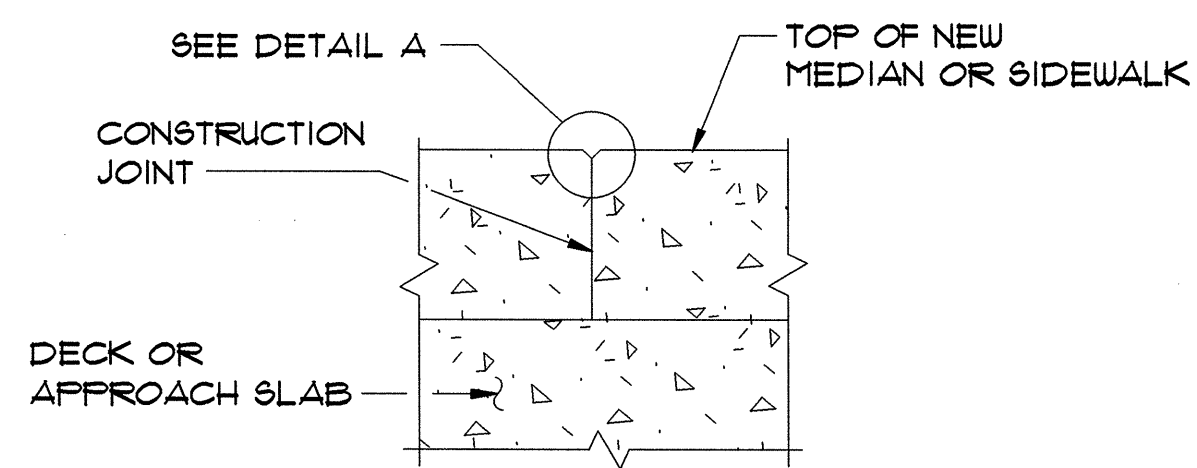
DETAIL SHOWING LIMITS OF 580.12, REPAIR OF CONCRETE SUPERSTRUCTURE SURFACE CLASS III AND 580.19, CONCRETE CLASS AA OVERLAY

NTS



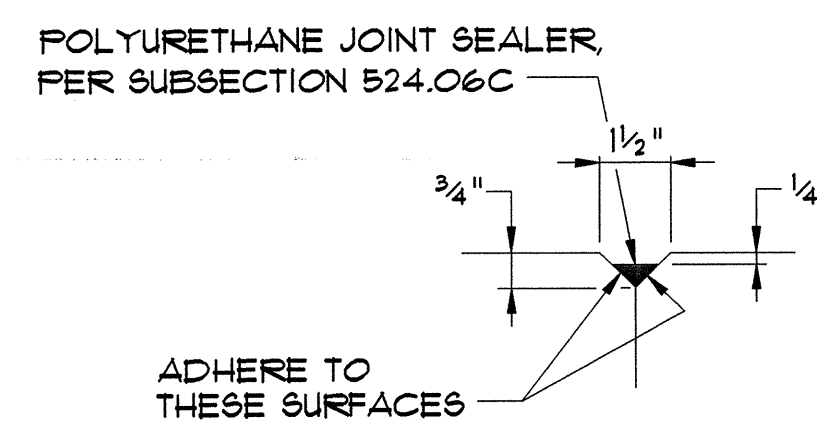
TEMPORARY APPROACH SLAB PAVEMENT TRANSITION DETAIL

NTS



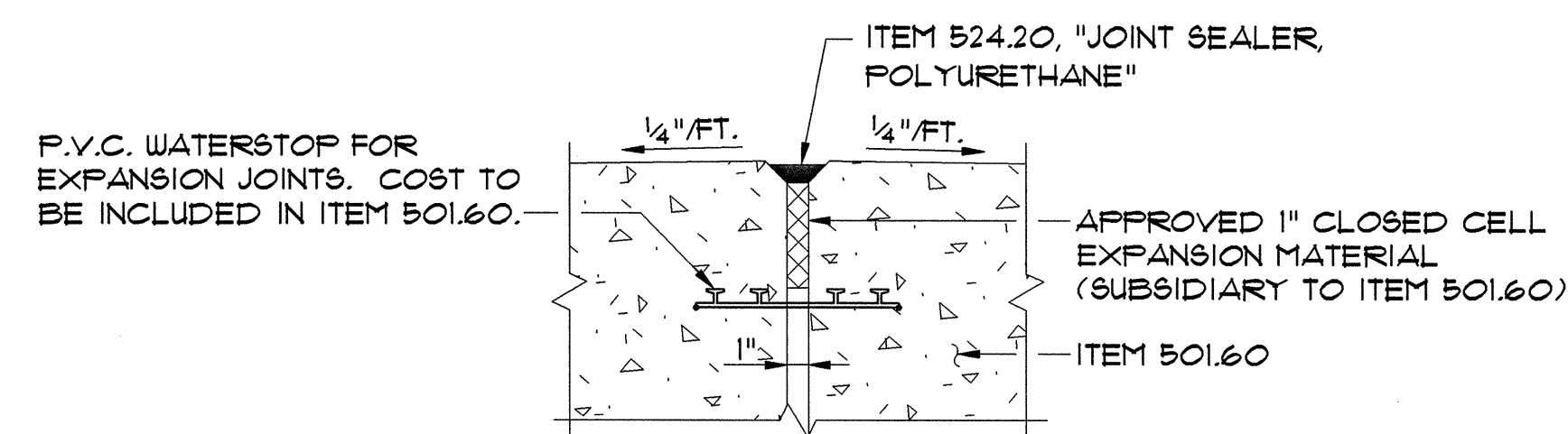
SECTION A-A

SCALE: 3/4"=1'-0"



DETAIL A

SCALE: 3"=1'-0"

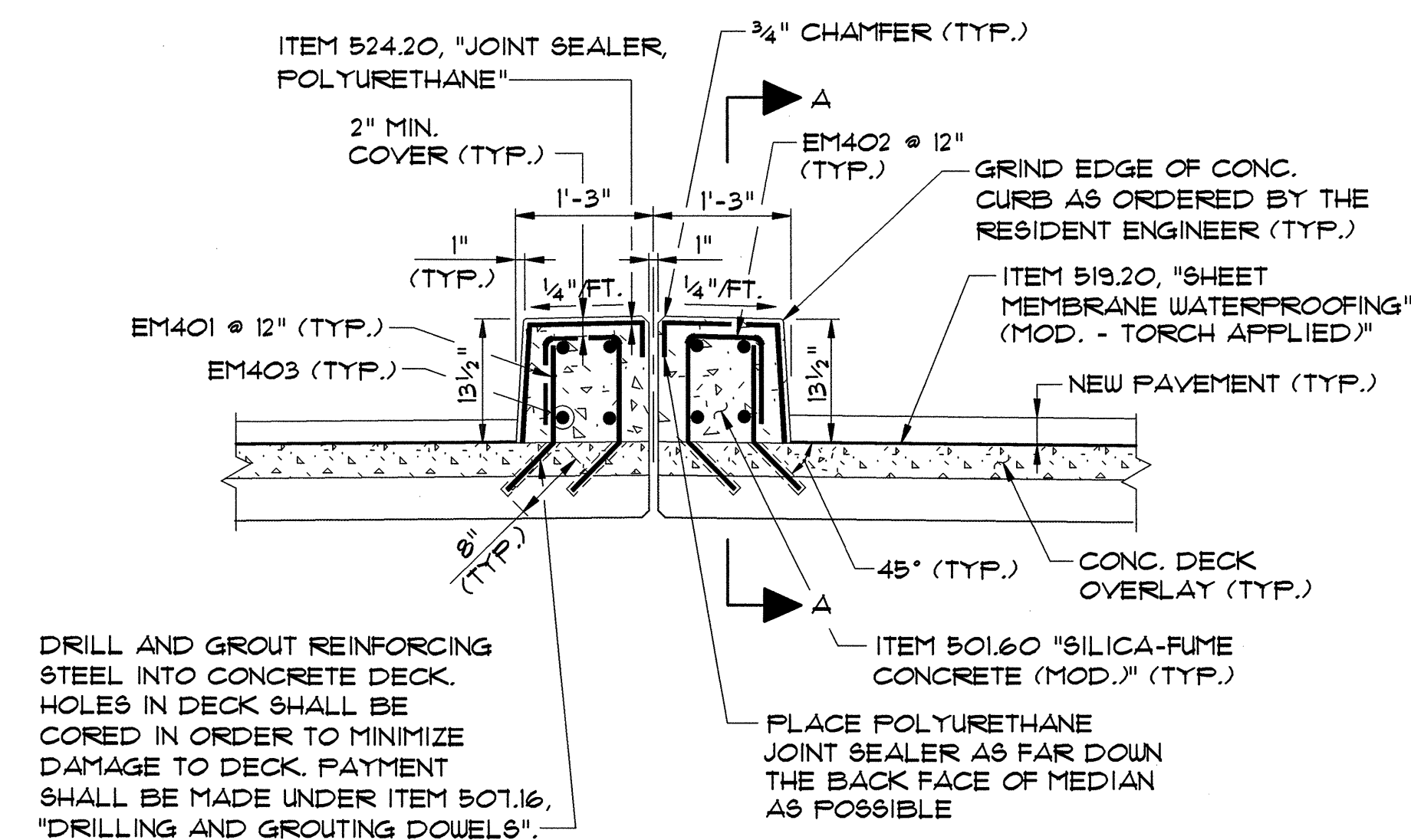


DETAIL B

NTS

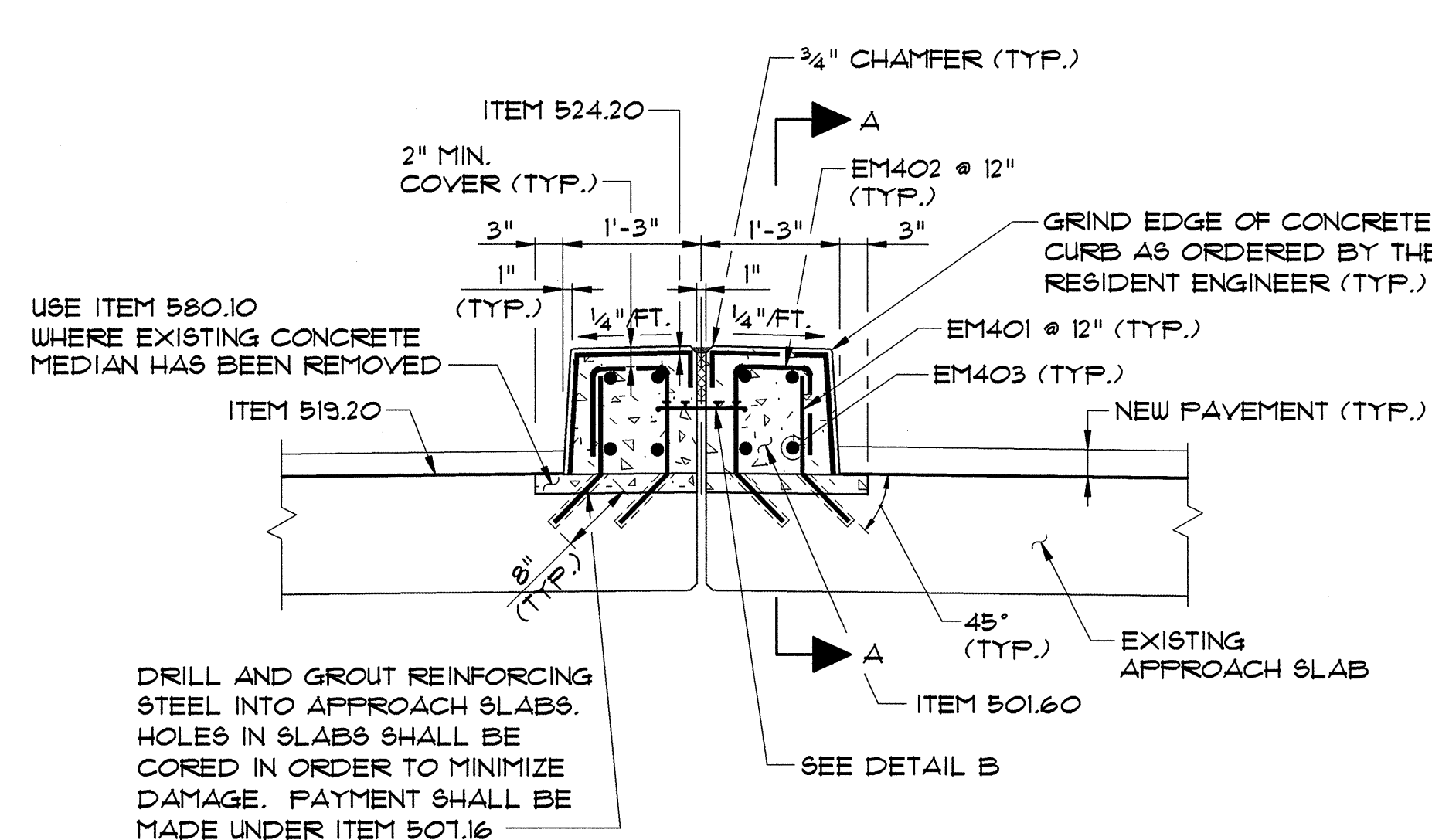
NOTES:

- SEE SHEET 9 FOR DECK REHABILITATION NOTES.
- NOTE USED.
- SEE SHEET 10 FOR APPROACH SLAB REHABILITATION NOTES.
- CONSTRUCTION JOINTS THROUGH CONCRETE MEDIAN SHALL BE SPACED MAXIMUM 15'-0" CENTER TO CENTER. CONCRETE SHALL BE PLACED IN ALTERNATING SECTIONS WITH A MINIMUM OF 48 HOURS DELAY BETWEEN ADJACENT POURS. LONGITUDINAL REINFORCING SHALL PASS THROUGH CONCRETE MEDIAN CONSTRUCTION JOINTS, EXCEPT AT JOINTS OVER PIERS WHICH SHALL REMAIN OPEN.
- NO SEALER SHALL BE USED AT JOINTS OVER PIERS WHICH SHALL REMAIN OPEN. COLOR OF POLYURETHANE JOINT SEALANT SHALL MATCH CONCRETE.



DECK MEDIAN REPLACEMENT DETAIL

SCALE: 3/4"=1'-0"



APPROACH SLAB MEDIAN REPLACEMENT DETAIL

SCALE: 3/4"=1'-0"

VANASSE HANGEN BRUSTLIN, INC.

STATE OF VERMONT AGENCY OF TRANSPORTATION

Town Of	SOUTH BURLINGTON	Bridge No.	68
Highway No. U.S.	2	Log Sta.	
		Surv. Sta.	
U.S. 2 OVER I-89			
DECK & MEDIAN REHABILITATION DETAILS			
Designed By	S.M. HODGDON	Drawn By	B.J. MASSE
Checked By	T.S. BRYANT	Date	1/00
		Bridge Design Supervisor	C.D. BAKER
		Date	1/00
PROJECT	SOUTH BURLINGTON	PROJECT NO.	IM DECK (36)
VHB Cad Drawing No.	50929CPD2	Date	1/00
Bridge Sheet No.		Sheet	12 of 15