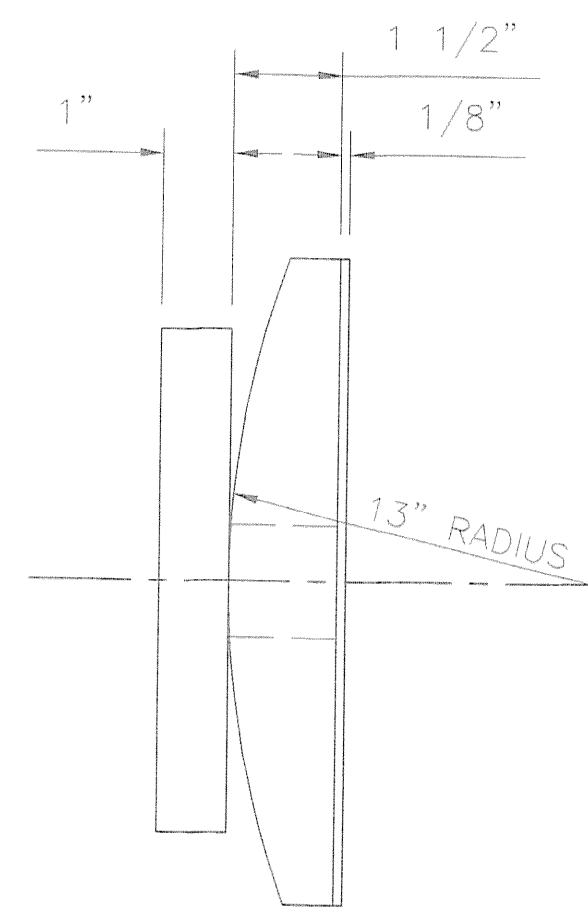
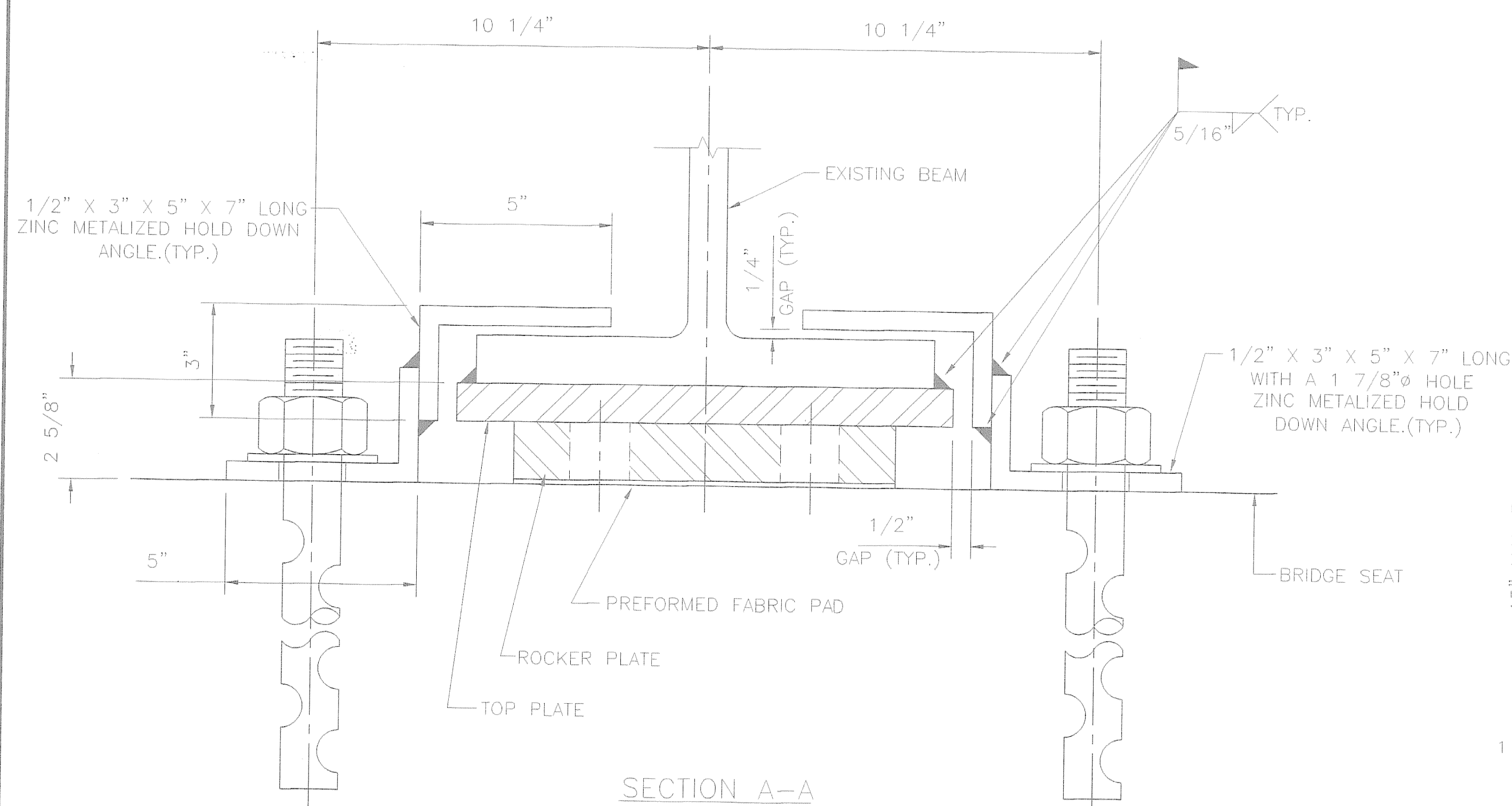


PLAN VIEW
EXPANSION BEARING
LOCATION: ABUTMENT 1, BEAM LINE 14
QUANTITY: 1

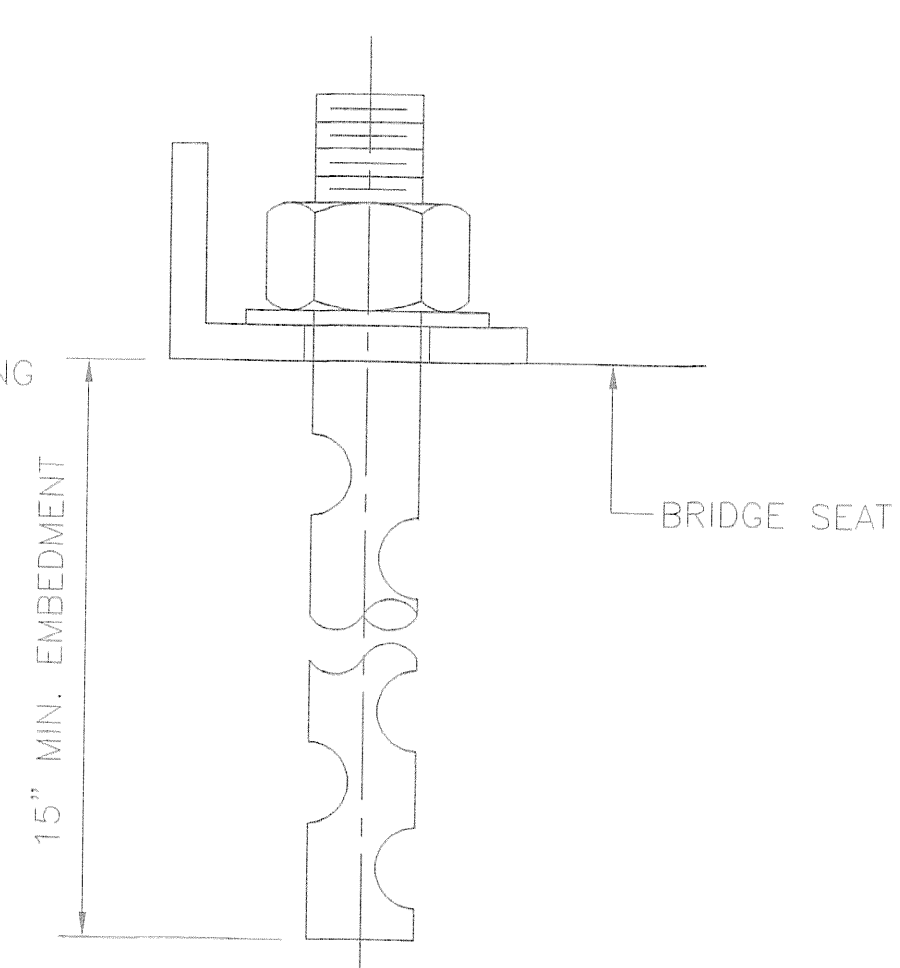


ELEVATION

- Contractor responsible to verify dimensions of existing plates before ordering new plates.
- Shim plates, if required shall be galvanized or metalized.



SECTION A-A



ANCHOR BOLT DETAIL

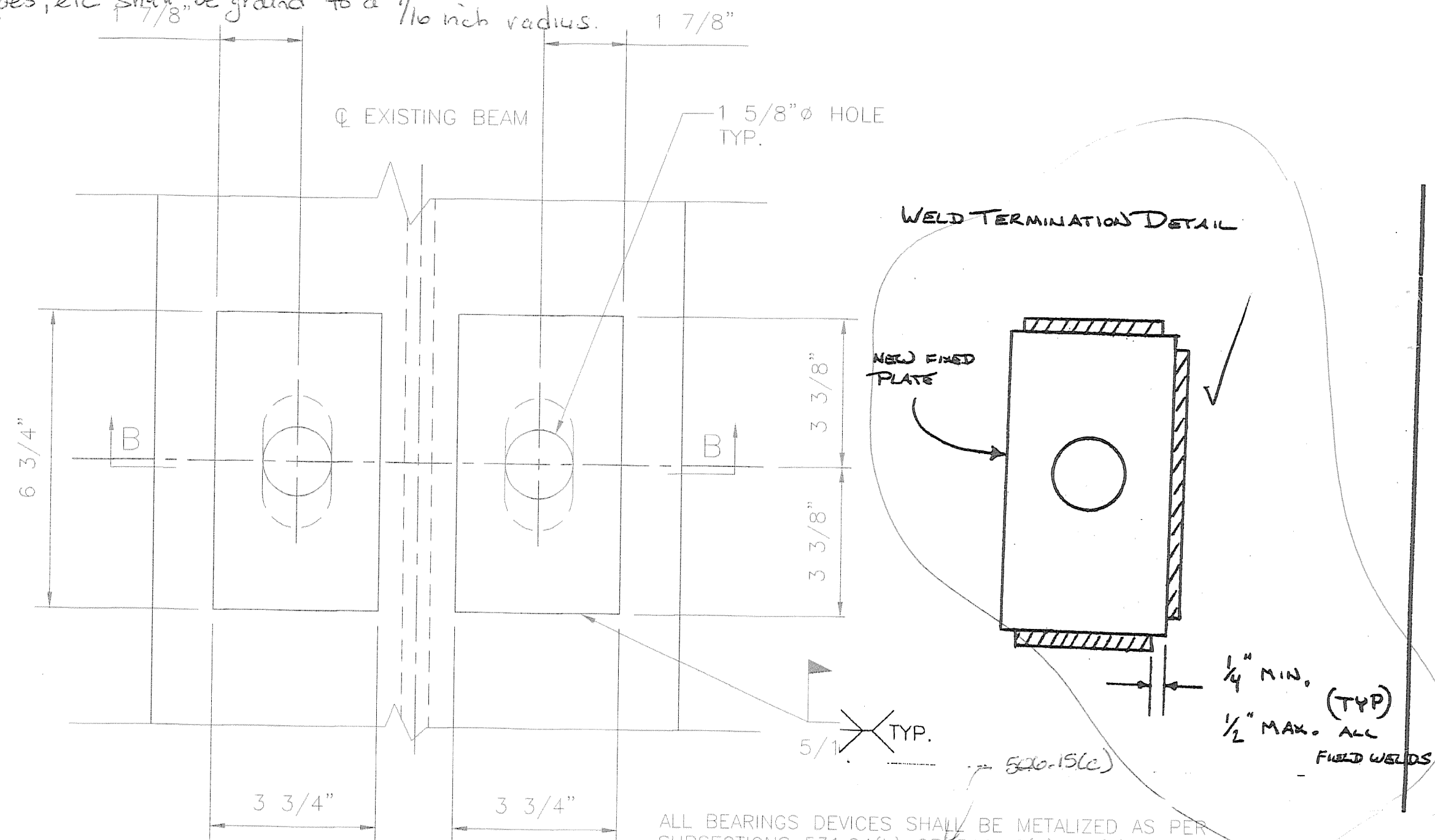
1 1/2" DIA. X 18" LONG, ASTM A709 GR. 36 AASHTO M183 ASTM A307
NUTS SHALL BE PLACED FINGER TIGHT AND ANCHOR BOLT THREADS BURRED TO PREVENT REMOVAL OF NUT (TYP.)

BEARING NOTES

- ALL MATERIALS USED IN THE FABRICATION OF THESE BEARINGS SHALL BE MADE IN THE U.S.A.
- BEARINGS ARE TO BE SHIPPED AS COMPLETE UNITS, STEEL Banded, AND SHALL BE WRAPPED TO PROTECT FROM MOISTURE AND DIRT DURING TRANSIT AND STORAGE.
- LOCATION OF FABRICATION PLANT - 70 SOUTH STREET, WALPOLE, MA. 02081
- COSMEC, INC. REPRESENTATIVE - MR. WILLIAM BURHOE (508) 668-6600
- AT NO TIME MAY ANY BEARINGS BE DISASSEMBLED WITHOUT AUTHORIZATION FROM COSMEC, INC.
- BEARINGS SHALL BE STORED IN A CLEAN, DRY, LEVEL UPRIGHT POSITION.
- Prior to galvanizing or metalizing, all corners and edges of steel plates, shapes, etc shall be ground to a 1/16 inch radius.

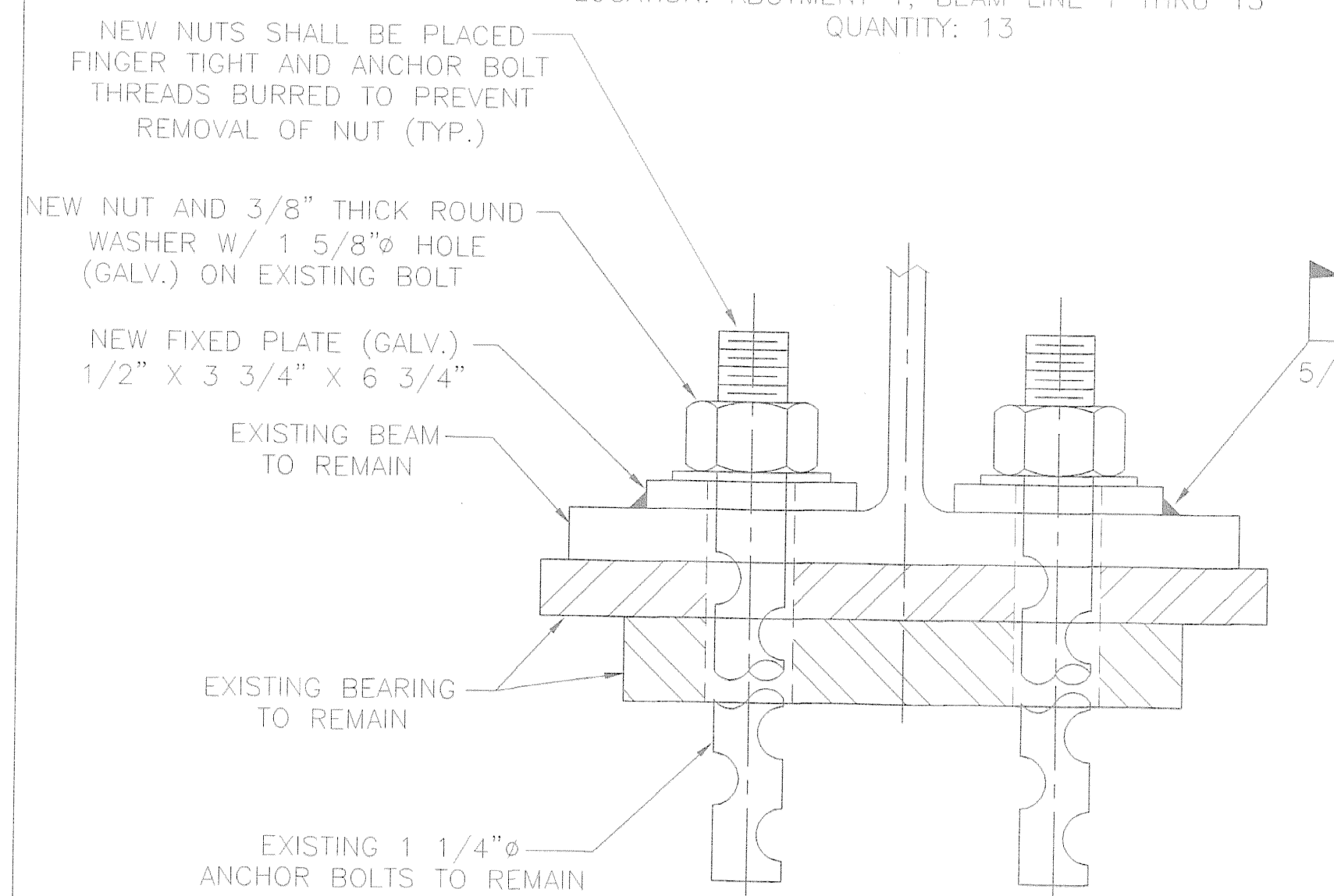
MATERIALS

STEEL - AASHTO M-183 GRADE 36 (ASTM A709 GR. 36) ZINC METALIZED AND SEALED WITH AN APPROVED SEALANT.
STAINLESS STEEL - ASTM A.240 TYPE 304, (20 RMS) FINISH
PREFORMED FABRIC PAD - AASHTO DIV. II SPEC. 18.4.10.1
PTFE - ASTM D1457 (UNFILLED) and requirements 731.04 of Vermont Standard Spec.
ANCHOR BOLTS, NUTS & WASHERS - SEE DETAIL
Nuts - Heavy Hex Nut ASTM A307
Washers - AASHTO M183



ALL BEARINGS DEVICES SHALL BE METALIZED AS PER SUBSECTIONS 531.04(b) OR 506.15(a) & (b). BEARINGS SHALL BE SEALED WITH AN APPROVED SEALER AS SPECIFIED IN STANDARD SPEC. SUBSECTION 506.15(b). AREAS OF METALIZING DAMAGED BY FIELD WELDING OR HANDLING SHALL BE PAINTED WITH AN APPROVED SEALANT IN ACCORDANCE WITH STANDARD SPEC. SUBSECTION 708.02(d)

PLAN VIEW
MODIFY EXISTING EXPANSION BEARING TO FIXED BEARING
LOCATION: ABUTMENT 1, BEAM LINE 1 THRU 13
QUANTITY: 13



SECTION B-B

SHOP DRAWING REVIEW		
<input type="checkbox"/> REVIEWED AS REQUIRED BY THE CONSTRUCTION CONTRACT DOCUMENTS AND APPROVED, BUT ONLY FOR CONFORMANCE TO THE DESIGN CONCEPT OF THE WORK, AND SUBJECT TO FURTHER LIMITATIONS AND REQUIREMENTS CONTAINED IN THE CONSTRUCTION CONTRACT DOCUMENTS.	<input type="checkbox"/> REJECTED	<input checked="" type="checkbox"/> FINISH AS CORRECTED
CORRECTIONS OR COMMENTS MADE ON THE SHOP DRAWING SHALL BE MADE BY THE CONTRACTOR. THIS REVIEW IS NOT A REVIEW OF THE DESIGN CONCEPT OF THE WORK, AND SUBJECT TO FURTHER LIMITATIONS AND REQUIREMENTS CONTAINED IN THE CONSTRUCTION CONTRACT DOCUMENTS. THE CONTRACTOR IS RESPONSIBLE FOR CONFIRMING AND CORRELATING ALL QUANTITIES AND DIMENSIONS, SELECTING FABRICATION PROCESSES AND TECHNIQUES OF CONSTRUCTION, COORDINATING HIS WORK WITH THAT OF ALL OTHER TRADES, AND PERFORMING HIS WORK IN A SAFE AND SATISFACTORY MANNER.		
VHB Vanessa Hangan Brustlin, Inc. Engineers, Planners, and Scientists Six Bedford Farms, 4000 Rd. Bedford, NH 03110 603 844 0888	Job Number: 50939 Reviewed By: ASP Date: 6-19-00	

STATE OF VERMONT
AGENCY OF TRANSPORTATION
U.S. 2 OVER I-89
TOWN OF SOUTH BURLINGTON
PROJECT NO. IM DECK (36)
ITEM NO. 531.10
BRIDGE NO.68

COSMEC, INC.		70 SOUTH STREET, WALPOLE, MA. 02081	
SCALE: 3/8" = 1"	DRAWN BY: R.F.C.	CHECKED BY: M.C.M.	
	DATE: 5/30/00	DATE: 6/5/00	
COSMEC ROCKER BEARINGS			
CUSTOMER: J.A. McDonald INC.	S.D. NUMBER: 59077	DRAWING NUMBER: 3343	REV.

REV.	BY	DATE	CHK'D	DATE