

Fig. 2—Trench Dimensions—No Vertical Separation

For formations not listed in Table A, the approximate cubic yards of concrete required per 100 trench feet can be obtained with the following formula:

$$\text{Formula: } V = [9.2WH + 9H + 18.7W + 7]0.026$$

V = volume of concrete (cubic yards/100 trench feet)

W = number of ducts wide

H = number of ducts high

Example: Duct formation 5 wide by 10 high

$$[(9.2 \times 5 \times 10) + (9 \times 10) + (18.7 \times 5) + 7]0.026$$

$$[460 + 90 + 93.5 + 7]0.026$$

$$[650.5 \times 0.026] = 16.9 \text{ cubic yards.}$$

4.05 Table B indicates the trench width, concrete depth, and volume of concrete required for various duct formations where there is 1-inch vertical and horizontal separation between ducts. Figure 3 illustrates a nine-duct formation of this type in a straight conduit section or at curves and grade changes.

TABLE B
8 PLASTIC PVC AND 8
POLYPROPYLENE CONDUIT
1-INCH VERTICAL SEPARATION
TRENCH DIMENSIONS

DUCT FORMATION		TRENCH WIDTH	CONCRETE DEPTH	APPROX CU
NO. WIDE	NO. HIGH	(NOTE 1) (INCHES)	(NOTE 2) (INCHES)	YDS CONCRETE PER 100 TRENCH FEET
3	2	18-1/2	12-1/2	4
3	3	18-1/2	15	5
3	4	18-1/2	24-1/2	6-1/2
4	2	23-1/2	12-1/2	5
4	3	23-1/2	15	6-1/2
4	4	23-1/2	24-1/2	8-1/2

Note 1: Includes 1-1/2 inches from each side of duct formation to trench wall and 1 inch between ducts.

Note 2: Includes 1-1/2 inches below bottom tier, 2 inches above top tier, and 1 inch between top ducts.

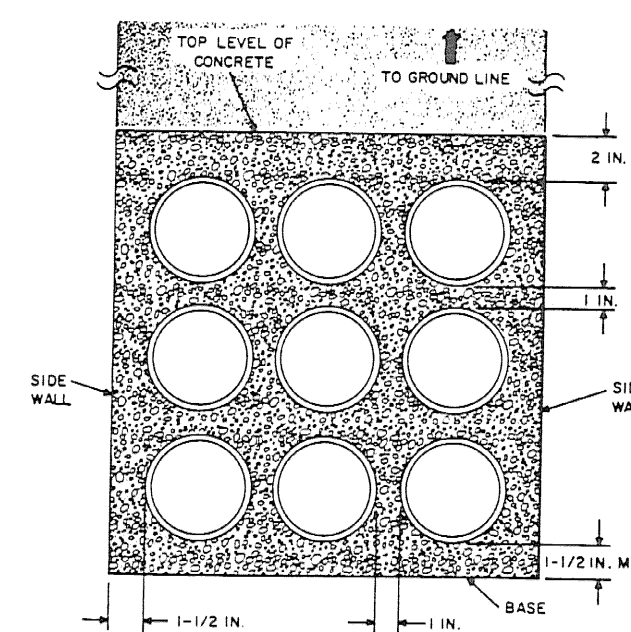


Fig. 3—Trench Dimensions—1-Inch Vertical and Horizontal Separation