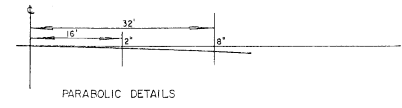


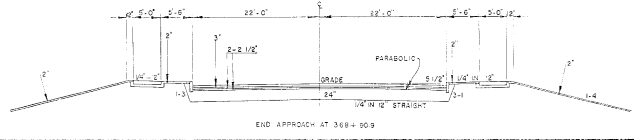
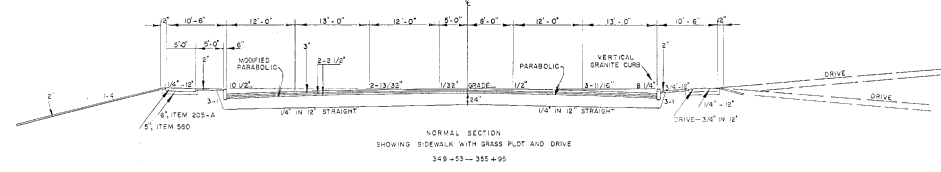
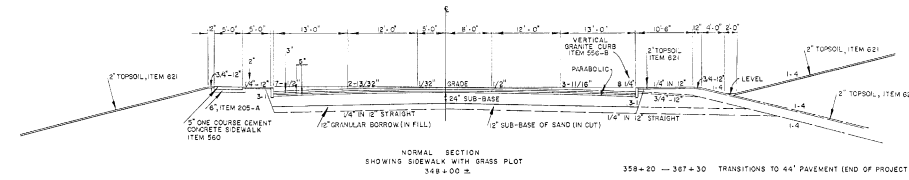
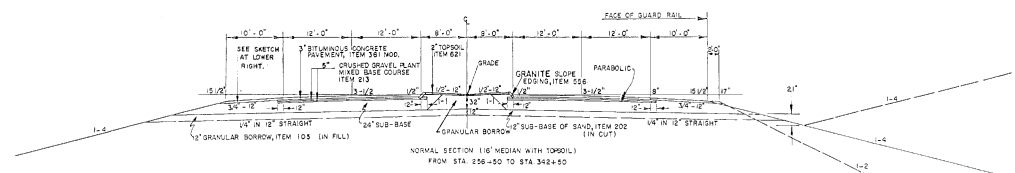
1994
 Rdwy.
 CLARENDON-RUTLAND
 AP 019-3 (8)

TYPICAL SECTIONS

3" BITUMINOUS CONCRETE PAVEMENT, ITEM 361 MOD (±1/4") 1 1/4" WEARING COURSE, TYPE III OVER 1 3/4" BINDING COURSE, TYPE III
 5" CRUSHED GRAVEL OR CRUSHED STONE PLANT MIXED BASE COURSE, ITEM 213. (±1/2") 2-2 1/2" COURSES
 2 1/2" SUB-BASE OF CRUSHED GRAVEL, COARSE GRADED, ITEM 205-A
 SHOULDERS: 1 1/2" BITUMINOUS CONCRETE PAVEMENT, ITEM 361 MOD (WEARING COURSE TYPE III)
 1 1/2" SUB-BASE OF CRUSHED GRAVEL FINE GRADED, ITEM 205-B
 12" GRANULAR BORROW, ITEM 105 (±1") IN FILL
 12" SUB-BASE OF SAND, ITEM 202 (±1") IN CUT OR AS DIRECTED BY THE ENGINEER.
 CONSTRAINTS AS SHOWN



PERMISSIBLE TOLERANCES IN PARENTHESIS APPLY TO THICKNESS ONLY.



SEEDING ITEM 611
THE SEED MIXTURE SHALL BE COMPOSED AS FOLLOWS:

%	LBS/ACRE	NAME	PURITY %	GERM %
33.33	20	CRESPING RED FESCUE	97	80
10.00	5	TALL FESCUE	95	80
16.67	10	KENTUCKY BLUE GRASS	85	75
8.33	5	RED TOP	92	90
16.67	10	DOMESTIC RYE GRASS	98	90
8.33	5	DINGSDOOP TREFOIL (EMPIRE)	99	80
0.00	0	WEDG SEED		
0.00	0	INERT MATERIAL		
100.00	60 LBS PER ACRE			

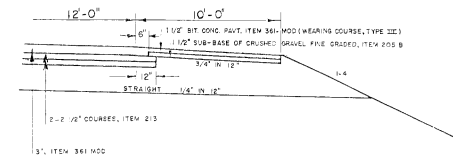
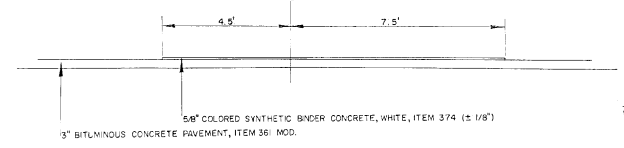
THE COMMERCIAL FERTILIZER ITEM 615 SHALL BE MIXED AS FOLLOWS:

NITROGEN	PHOSPHORUS	POTASH	RATE OF APPLICATION
10 %	20 %	10 %	500 LBS PER ACRE

FERTILIZER SHALL BE DELIVERED IN BAGS OF NOT MORE THAN 100 LBS. EA.
50 LBS OF WINTER RYE PER ACRE TO BE APPLIED TO THIS MIXTURE IF DIRECTED BY THE ENGINEER.
MULCH, ITEM 622 TO BE PLACED ON ALL EARTH SLOPES AT THE RATE OF 2 TONS PER ACRE
STEEL MARKER POSTS, ITEM 547-D TO BE PLACED AS DIRECTED BY THE ENGINEER
FOR ROUNDING OF SLOPES, SEE STD. SHEET B-5

FOR DRILLING AND BLASTING OF SOLID ROCK SUB-GRADE, SEE STANDARD A-61

TYPICAL—COLORED SYNTHETIC BINDER CONCRETE
STA 342+70 — 367+36



057

CLARENDON-RUTLAND

SURVEYED BY	DATE
DRAWN BY S.A.A.	DATE OCT. 1993
TRACED BY A.V.R.	DATE

PROJ. AP No. 019-3 (8)
SHEET 2 OF 218

TRAVERSE THROUGH ROAD ITEM 518
 316+00 - 319+70.41
 317+50 - 321+84.94

SEEDING, ITEM 511
 FERTILIZER ITEM 515
 TOPSOIL, ITEM 521
 116+00 - 112+00 ISLAND
 119+80 - 120+00 PT.

GRANITE SLOPE EDDING
 ITEM 550-A
 116+00 - 112+00

DRILLING & BLASTING OF SOLID
 ROCK SUBGRADE, ITEM 115
 125+50 - 112+00

CONSTRUCT DRIVES
 325+25 RT.
 316+10 RL
 316+00 RT (TURN AROUND)
 325+00 LT.
 328+60 RT.

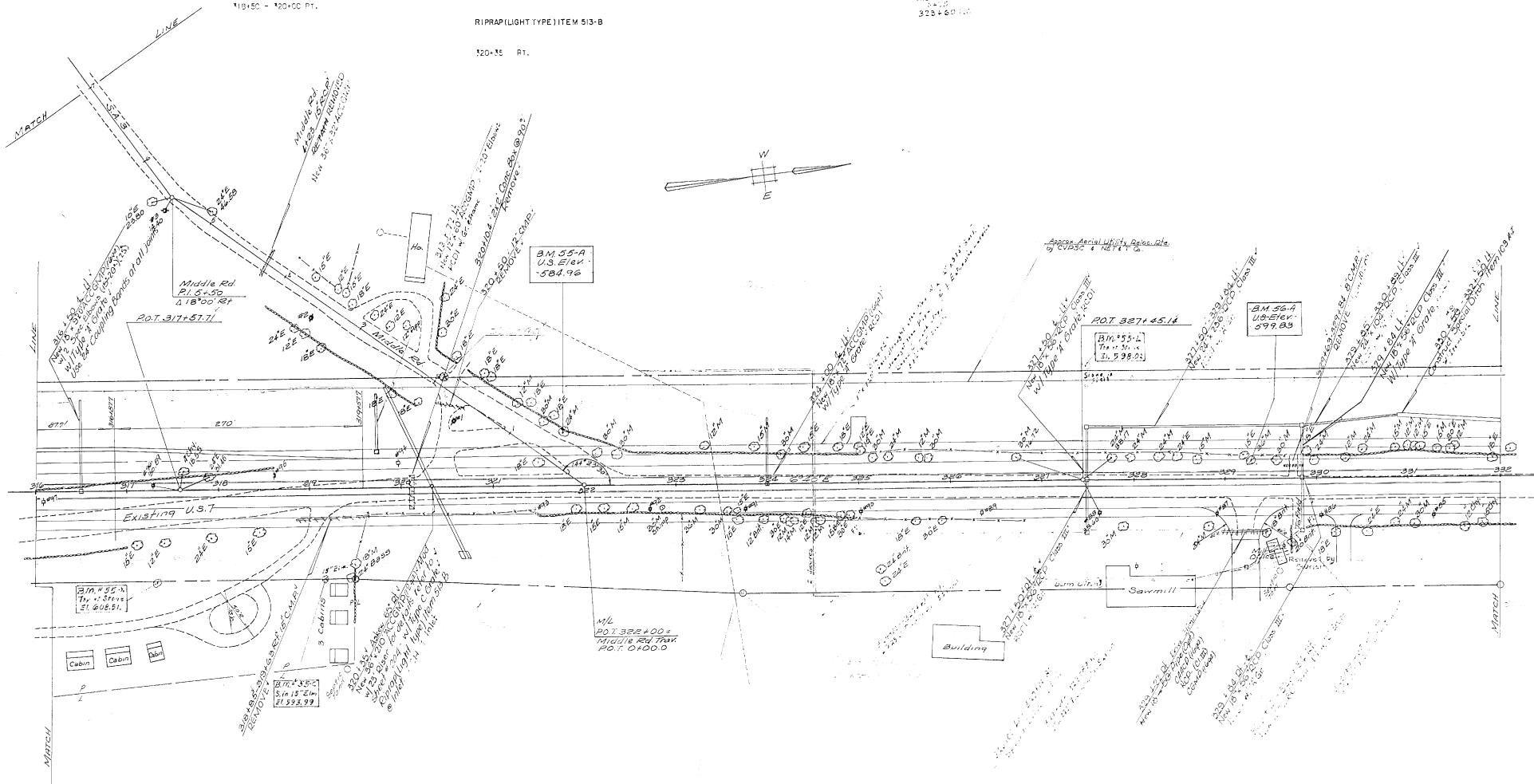
THREE CABLE GUARD RAIL WITH
 STEEL POSTS, ITEM 542
 316+00 - 321+75 RT.
 317+50 - 321+84.47.

REMOVAL OF CONCRETE PAVEMENT
 ITEM 103-B
 324+00 - 332+00

RIPRAP (LIGHT TYPE) ITEM 513-B

120+15 RT.

PLAN	DESIGNED BY	DATE
SECTION	CHECKED BY	
DETAIL	APPROVED BY	



NOTE: 1. All elevations are in feet above sea level unless otherwise noted.
 2. All dimensions are in feet unless otherwise noted.
 3. All bearings are in degrees, minutes, and seconds.

US7
 CLARENDON-RUTLAND
 AD 019-3/8
 Sheet 52 of 210 Sheets

PLAN	DATE	BY
REVISED		
APPROVED		
CHECKED		
DESIGNED		
CONTRACT		

SEEDING, ITEM 611
FERTILIZER, ITEM 615
TOPSOIL, ITEM 621

403+18-403+50 RT.	353+69-353+99 LT.
403+03-350+11 RT.	353+00-356+75 LT.
350+06-351+00 RT.	357+03-357+45 LT.
350+70-353+57 RT.	357+55-360+02 LT.
403+00-403+30 LT.	360+37-360+92 LT.
403+85-403+30 LT.	361+27-362+21 LT.
350+30-352+94 LT.	362+56-363+42 LT.
353+19-353+39 RT.	
363+75-363+89 RT.	

CONSTRUCT DRIVES

348+00-5 PAVE
350+00-5 PAVE + 15
350+08 PAVE + 50
353+09 PAVE + 60
354+25 + 25
357+25.5 PAVE
358+06 PAVE + 25
363+06.9 + 50
359 + 25
359 + 60
361 + 21

REMOVAL OF CONCRETE PAVEMENT
ITEM 103-B

348+00 - 356+38
361+00 - 364+00

COLORED SYNTHETIC BINDER CONCRETE
ITEM 374

348+00 - 364+00

VERTICAL GRANITE CURB, ITEM 556-P

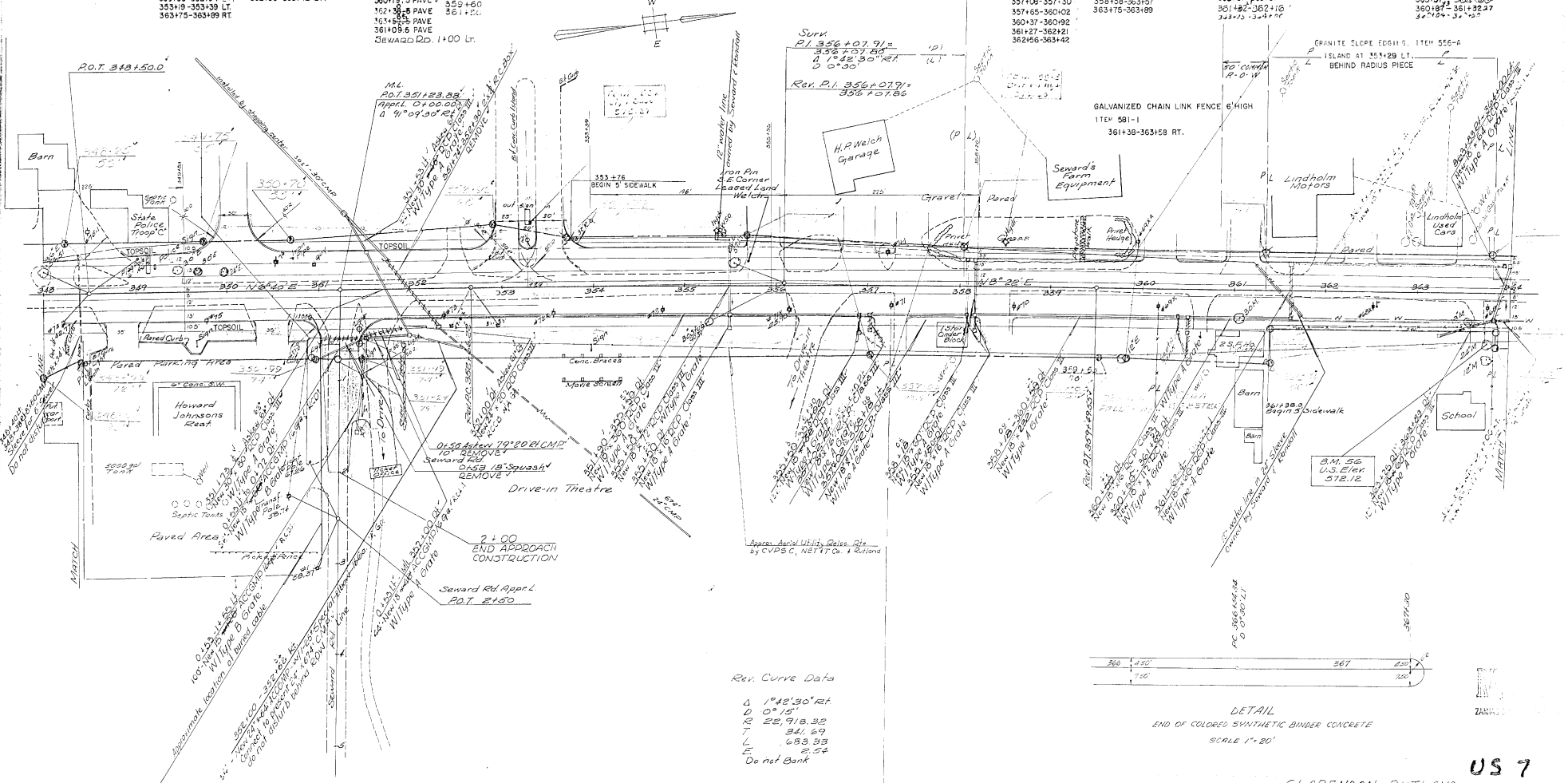
403+00-403+13
403+01-403+17
403+21-362+94
353+19-353+39
353+60-355+69
356+04-356+73
357+08-357+30
357+40-360+02
360+37-360+92
361+27-362+21
362+56-363+42

5" ONE COURSE CEMENT CONCRETE
SIDEWALK, ITEM 550

361+38-363+58

8" ONE COURSE CEMENT CONCRETE
SIDEWALK, ITEM 550

363+84-364+00



Rev. Curve Data
 Δ 1° 42' 30" RT
 D 0° 15'
 R 22,918.32
 T 341.69
 L 683.33
 P 61.24
 Do not Bank



DETAIL
 END OF COLORED SYNTHETIC BINDER CONCRETE
 SCALE 1"=20'

PLAN	DATE	BY	REVISION
1	10/15/58	W.D.	AS SHOWN
2	11/10/58	W.D.	REVISED
3	12/15/58	W.D.	REVISED
4	1/15/59	W.D.	REVISED
5	2/15/59	W.D.	REVISED
6	3/15/59	W.D.	REVISED
7	4/15/59	W.D.	REVISED
8	5/15/59	W.D.	REVISED
9	6/15/59	W.D.	REVISED
10	7/15/59	W.D.	REVISED
11	8/15/59	W.D.	REVISED
12	9/15/59	W.D.	REVISED
13	10/15/59	W.D.	REVISED
14	11/15/59	W.D.	REVISED
15	12/15/59	W.D.	REVISED
16	1/15/60	W.D.	REVISED
17	2/15/60	W.D.	REVISED
18	3/15/60	W.D.	REVISED
19	4/15/60	W.D.	REVISED
20	5/15/60	W.D.	REVISED
21	6/15/60	W.D.	REVISED
22	7/15/60	W.D.	REVISED
23	8/15/60	W.D.	REVISED
24	9/15/60	W.D.	REVISED
25	10/15/60	W.D.	REVISED
26	11/15/60	W.D.	REVISED
27	12/15/60	W.D.	REVISED
28	1/15/61	W.D.	REVISED
29	2/15/61	W.D.	REVISED
30	3/15/61	W.D.	REVISED
31	4/15/61	W.D.	REVISED
32	5/15/61	W.D.	REVISED
33	6/15/61	W.D.	REVISED
34	7/15/61	W.D.	REVISED
35	8/15/61	W.D.	REVISED
36	9/15/61	W.D.	REVISED
37	10/15/61	W.D.	REVISED
38	11/15/61	W.D.	REVISED
39	12/15/61	W.D.	REVISED
40	1/15/62	W.D.	REVISED
41	2/15/62	W.D.	REVISED
42	3/15/62	W.D.	REVISED
43	4/15/62	W.D.	REVISED
44	5/15/62	W.D.	REVISED
45	6/15/62	W.D.	REVISED
46	7/15/62	W.D.	REVISED
47	8/15/62	W.D.	REVISED
48	9/15/62	W.D.	REVISED
49	10/15/62	W.D.	REVISED
50	11/15/62	W.D.	REVISED
51	12/15/62	W.D.	REVISED
52	1/15/63	W.D.	REVISED
53	2/15/63	W.D.	REVISED
54	3/15/63	W.D.	REVISED
55	4/15/63	W.D.	REVISED
56	5/15/63	W.D.	REVISED
57	6/15/63	W.D.	REVISED
58	7/15/63	W.D.	REVISED
59	8/15/63	W.D.	REVISED
60	9/15/63	W.D.	REVISED
61	10/15/63	W.D.	REVISED
62	11/15/63	W.D.	REVISED
63	12/15/63	W.D.	REVISED
64	1/15/64	W.D.	REVISED
65	2/15/64	W.D.	REVISED
66	3/15/64	W.D.	REVISED
67	4/15/64	W.D.	REVISED
68	5/15/64	W.D.	REVISED
69	6/15/64	W.D.	REVISED
70	7/15/64	W.D.	REVISED
71	8/15/64	W.D.	REVISED
72	9/15/64	W.D.	REVISED
73	10/15/64	W.D.	REVISED
74	11/15/64	W.D.	REVISED
75	12/15/64	W.D.	REVISED
76	1/15/65	W.D.	REVISED
77	2/15/65	W.D.	REVISED
78	3/15/65	W.D.	REVISED
79	4/15/65	W.D.	REVISED
80	5/15/65	W.D.	REVISED
81	6/15/65	W.D.	REVISED
82	7/15/65	W.D.	REVISED
83	8/15/65	W.D.	REVISED
84	9/15/65	W.D.	REVISED
85	10/15/65	W.D.	REVISED
86	11/15/65	W.D.	REVISED
87	12/15/65	W.D.	REVISED
88	1/15/66	W.D.	REVISED
89	2/15/66	W.D.	REVISED
90	3/15/66	W.D.	REVISED
91	4/15/66	W.D.	REVISED
92	5/15/66	W.D.	REVISED
93	6/15/66	W.D.	REVISED
94	7/15/66	W.D.	REVISED
95	8/15/66	W.D.	REVISED
96	9/15/66	W.D.	REVISED
97	10/15/66	W.D.	REVISED
98	11/15/66	W.D.	REVISED
99	12/15/66	W.D.	REVISED
100	1/15/67	W.D.	REVISED
101	2/15/67	W.D.	REVISED
102	3/15/67	W.D.	REVISED
103	4/15/67	W.D.	REVISED
104	5/15/67	W.D.	REVISED
105	6/15/67	W.D.	REVISED
106	7/15/67	W.D.	REVISED
107	8/15/67	W.D.	REVISED
108	9/15/67	W.D.	REVISED
109	10/15/67	W.D.	REVISED
110	11/15/67	W.D.	REVISED
111	12/15/67	W.D.	REVISED
112	1/15/68	W.D.	REVISED
113	2/15/68	W.D.	REVISED
114	3/15/68	W.D.	REVISED
115	4/15/68	W.D.	REVISED
116	5/15/68	W.D.	REVISED
117	6/15/68	W.D.	REVISED
118	7/15/68	W.D.	REVISED
119	8/15/68	W.D.	REVISED
120	9/15/68	W.D.	REVISED
121	10/15/68	W.D.	REVISED
122	11/15/68	W.D.	REVISED
123	12/15/68	W.D.	REVISED
124	1/15/69	W.D.	REVISED
125	2/15/69	W.D.	REVISED
126	3/15/69	W.D.	REVISED
127	4/15/69	W.D.	REVISED
128	5/15/69	W.D.	REVISED
129	6/15/69	W.D.	REVISED
130	7/15/69	W.D.	REVISED
131	8/15/69	W.D.	REVISED
132	9/15/69	W.D.	REVISED
133	10/15/69	W.D.	REVISED
134	11/15/69	W.D.	REVISED
135	12/15/69	W.D.	REVISED
136	1/15/70	W.D.	REVISED
137	2/15/70	W.D.	REVISED
138	3/15/70	W.D.	REVISED
139	4/15/70	W.D.	REVISED
140	5/15/70	W.D.	REVISED
141	6/15/70	W.D.	REVISED
142	7/15/70	W.D.	REVISED
143	8/15/70	W.D.	REVISED
144	9/15/70	W.D.	REVISED
145	10/15/70	W.D.	REVISED
146	11/15/70	W.D.	REVISED
147	12/15/70	W.D.	REVISED
148	1/15/71	W.D.	REVISED
149	2/15/71	W.D.	REVISED
150	3/15/71	W.D.	REVISED
151	4/15/71	W.D.	REVISED
152	5/15/71	W.D.	REVISED
153	6/15/71	W.D.	REVISED
154	7/15/71	W.D.	REVISED
155	8/15/71	W.D.	REVISED
156	9/15/71	W.D.	REVISED
157	10/15/71	W.D.	REVISED
158	11/15/71	W.D.	REVISED
159	12/15/71	W.D.	REVISED
160	1/15/72	W.D.	REVISED
161	2/15/72	W.D.	REVISED
162	3/15/72	W.D.	REVISED
163	4/15/72	W.D.	REVISED
164	5/15/72	W.D.	REVISED
165	6/15/72	W.D.	REVISED
166	7/15/72	W.D.	REVISED
167	8/15/72	W.D.	REVISED
168	9/15/72	W.D.	REVISED
169	10/15/72	W.D.	REVISED
170	11/15/72	W.D.	REVISED
171	12/15/72	W.D.	REVISED
172	1/15/73	W.D.	REVISED
173	2/15/73	W.D.	REVISED
174	3/15/73	W.D.	REVISED
175	4/15/73	W.D.	REVISED
176	5/15/73	W.D.	REVISED
177	6/15/73	W.D.	REVISED
178	7/15/73	W.D.	REVISED
179	8/15/73	W.D.	REVISED
180	9/15/73	W.D.	REVISED
181	10/15/73	W.D.	REVISED
182	11/15/73	W.D.	REVISED
183	12/15/73	W.D.	REVISED
184	1/15/74	W.D.	REVISED
185	2/15/74	W.D.	REVISED
186	3/15/74	W.D.	REVISED
187	4/15/74	W.D.	REVISED
188	5/15/74	W.D.	REVISED
189	6/15/74	W.D.	REVISED
190	7/15/74	W.D.	REVISED
191	8/15/74	W.D.	REVISED
192	9/15/74	W.D.	REVISED
193	10/15/74	W.D.	REVISED
194	11/15/74	W.D.	REVISED
195	12/15/74	W.D.	REVISED
196	1/15/75	W.D.	REVISED
197	2/15/75	W.D.	REVISED
198	3/15/75	W.D.	REVISED
199	4/15/75	W.D.	REVISED
200	5/15/75	W.D.	REVISED
201	6/15/75	W.D.	REVISED
202	7/15/75	W.D.	REVISED
203	8/15/75	W.D.	REVISED
204	9/15/75	W.D.	REVISED
205	10/15/75	W.D.	REVISED
206	11/15/75	W.D.	REVISED
207	12/15/75	W.D.	REVISED
208	1/15/76	W.D.	REVISED
209	2/15/76	W.D.	REVISED
210	3/15/76	W.D.	REVISED
211	4/15/76	W.D.	REVISED
212	5/15/76	W.D.	REVISED
213	6/15/76	W.D.	REVISED
214	7/15/76	W.D.	REVISED
215	8/15/76	W.D.	REVISED
216	9/15/76	W.D.	REVISED
217	10/15/76	W.D.	REVISED
218	11/15/76	W.D.	REVISED
219	12/15/76	W.D.	REVISED
220	1/15/77	W.D.	REVISED
221	2/15/77	W.D.	REVISED
222	3/15/77	W.D.	REVISED
223	4/15/77	W.D.	REVISED
224	5/15/77	W.D.	REVISED
225	6/15/77	W.D.	REVISED
226	7/15/77	W.D.	REVISED
227	8/15/77	W.D.	REVISED
228	9/15/77	W.D.	REVISED
229	10/15/77	W.D.	REVISED
230	11/15/77	W.D.	REVISED
231	12/15/77	W.D.	REVISED
232	1/15/78	W.D.	REVISED
233	2/15/78	W.D.	REVISED
234	3/15/78	W.D.	REVISED
235	4/15/78	W.D.	REVISED
236	5/15/78	W.D.	REVISED
237	6/15/78	W.D.	REVISED
238	7/15/78	W.D.	REVISED
239	8/15/78	W.D.	REVISED
240	9/15/78	W.D.	REVISED
241	10/15/78	W.D.	REVISED
242	11/15/78	W.D.	REVISED
243	12/15/78	W.D.	REVISED
244	1/15/79	W.D.	REVISED
245	2/15/79	W.D.	REVISED
246	3/15/79	W.D.	REVISED
247	4/15/79	W.D.	REVISED
248	5/15/79	W.D.	REVISED
249	6/15/79	W.D.	REVISED
250	7/15/79	W.D.	REVISED
251	8/15/79	W.D.	REVISED
252	9/15/79	W.D.	REVISED
253	10/15/79	W.D.	REVISED
254	11/15/79	W.D.	REVISED
255	12/15/79	W.D.	REVISED
256	1/15/80	W.D.	REVISED
257	2/15/80	W.D.	REVISED
258	3/15/80	W.D.	REVISED
259	4/15/80	W.D.	REVISED
260	5/15/80	W.D.	REVISED
261	6/15/80	W.D.	REVISED
262	7/15/80	W.D.	REVISED
263	8/15/80	W.D.	REVISED
264	9/15/80	W.D.	REVISED
265	10/15/80	W.D.	REVISED
266	11/15/80	W.D.	REVISED
267	12/15/80	W.D.	REVISED
268	1/15/81	W.D.	REVISED
269	2/15/81	W.D.	REVISED
270	3/15/81	W.D.	REVISED
271	4/15/81	W.D.	REVISED
272	5/15/81	W.D.	REVISED
273	6/15/81	W.D.	REVISED
274	7/15/81	W.D.	REVISED
275			

1994
RDwy.

CLARENDON- RUTLAND

AP 019-3 (B)