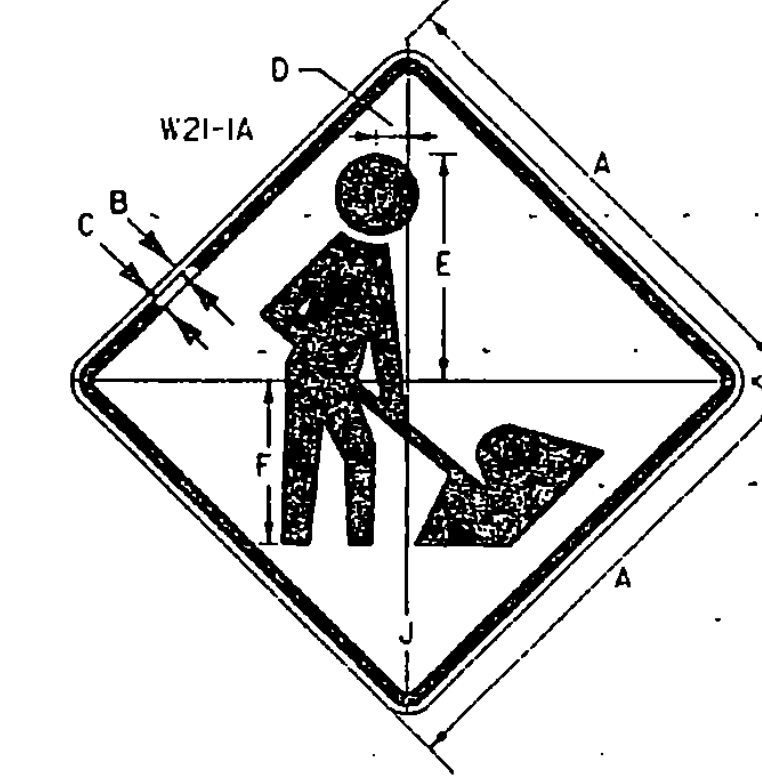
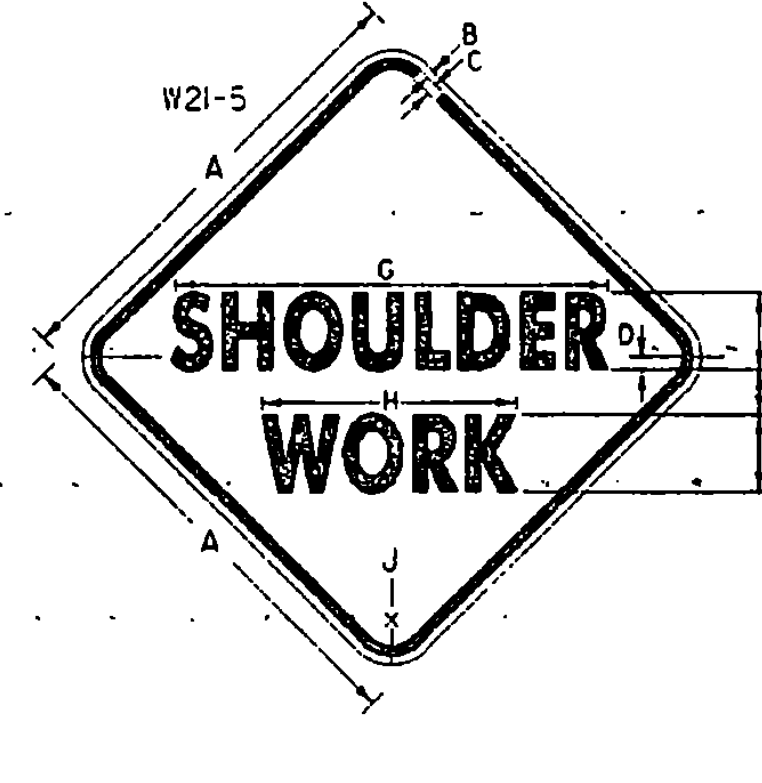


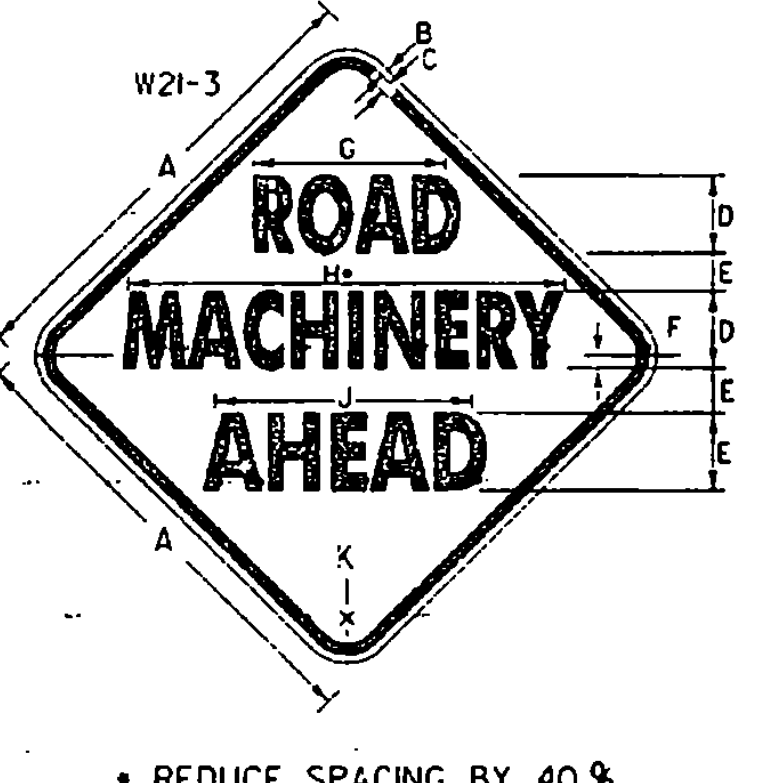
MOVE SIGNS AHEAD AS WORK PROGRESSES
**4 - LANE HIGHWAY
 MEDIAN MAINTENANCE**



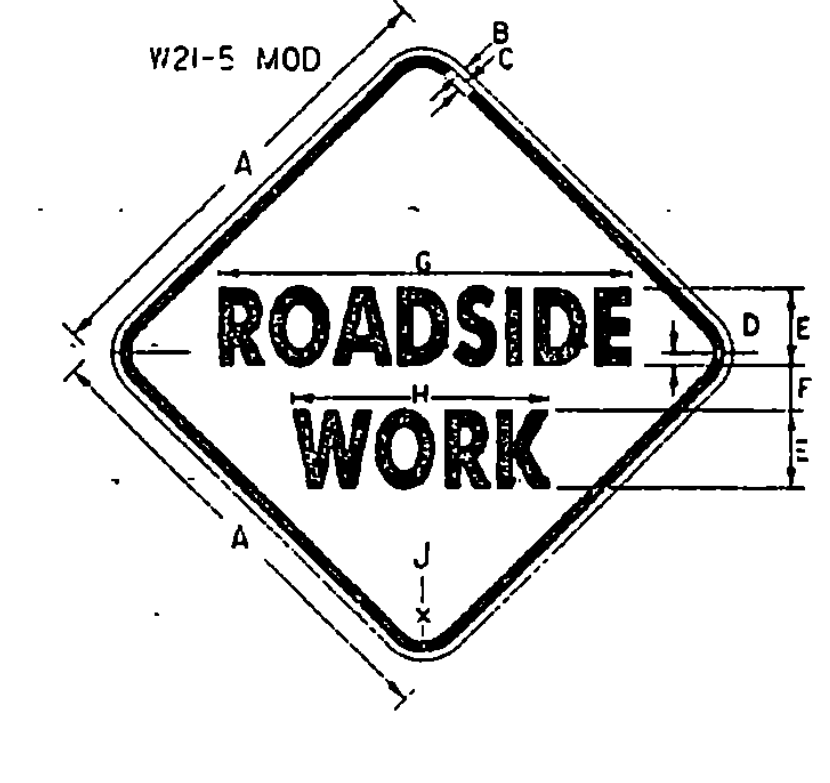
SIGN	DIMENSIONS (INCHES)									
	A	B	C	D	E	F	G	H	J	
2 LANE	36	5/8	7/8	5 3/4	5 3/4	4 1/4				2 1/4
4 LANE	48	3/4	1 1/4	7 1/2	20	5				2



SIGN	DIMENSIONS (INCHES)									
	A	B	C	D	E	F	G	H	J	
2 LANE	36	5/8	7/8	1	5-D	3 1/2	3 1/4	1 1/4	2 1/4	
4 LANE	48	3/4	1 1/4	1	7-C	4	3 3/8	2 1/4	3	

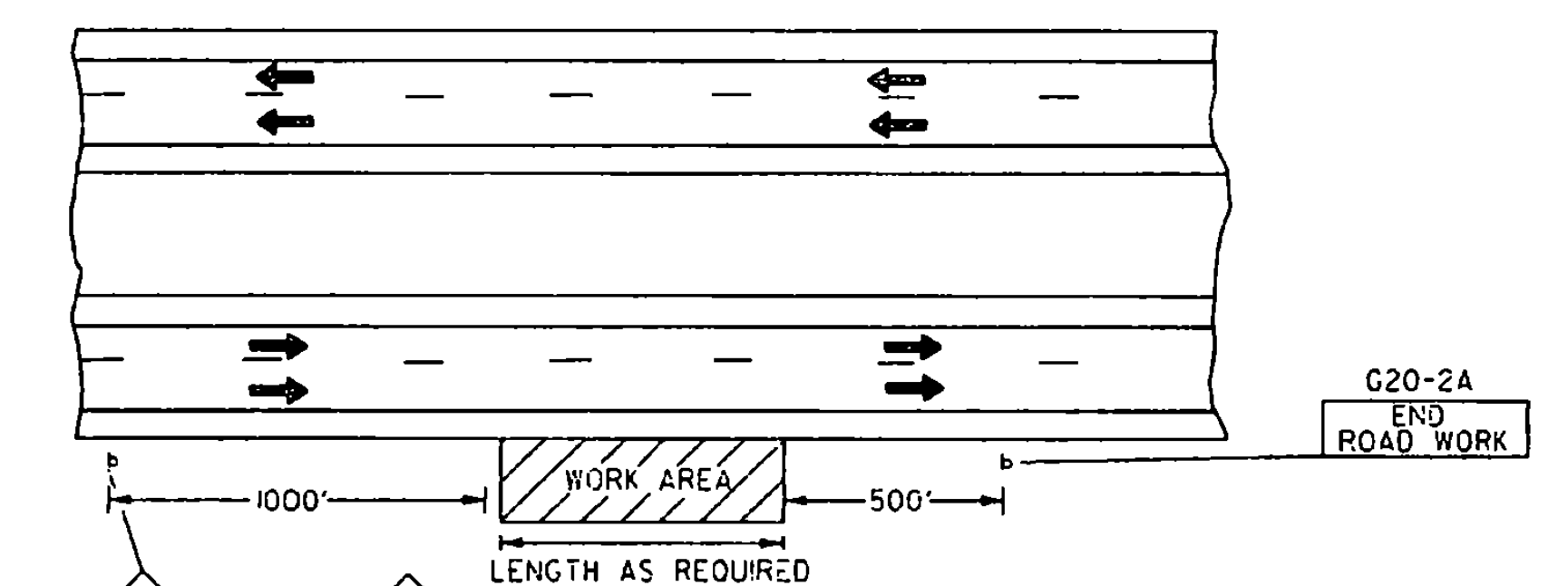


SIGN	DIMENSIONS (INCHES)										
	A	B	C	D	E	F	G	H	J	K	
2 LANE	36	5/8	7/8	5-D	4	2 1/2	17 1/4	3 1/4	2 1/4	2 1/4	
4 LANE	48	3/4	1 1/4	7-D	5	3 1/2	24 1/2	4 1/8	3 1/4	3	

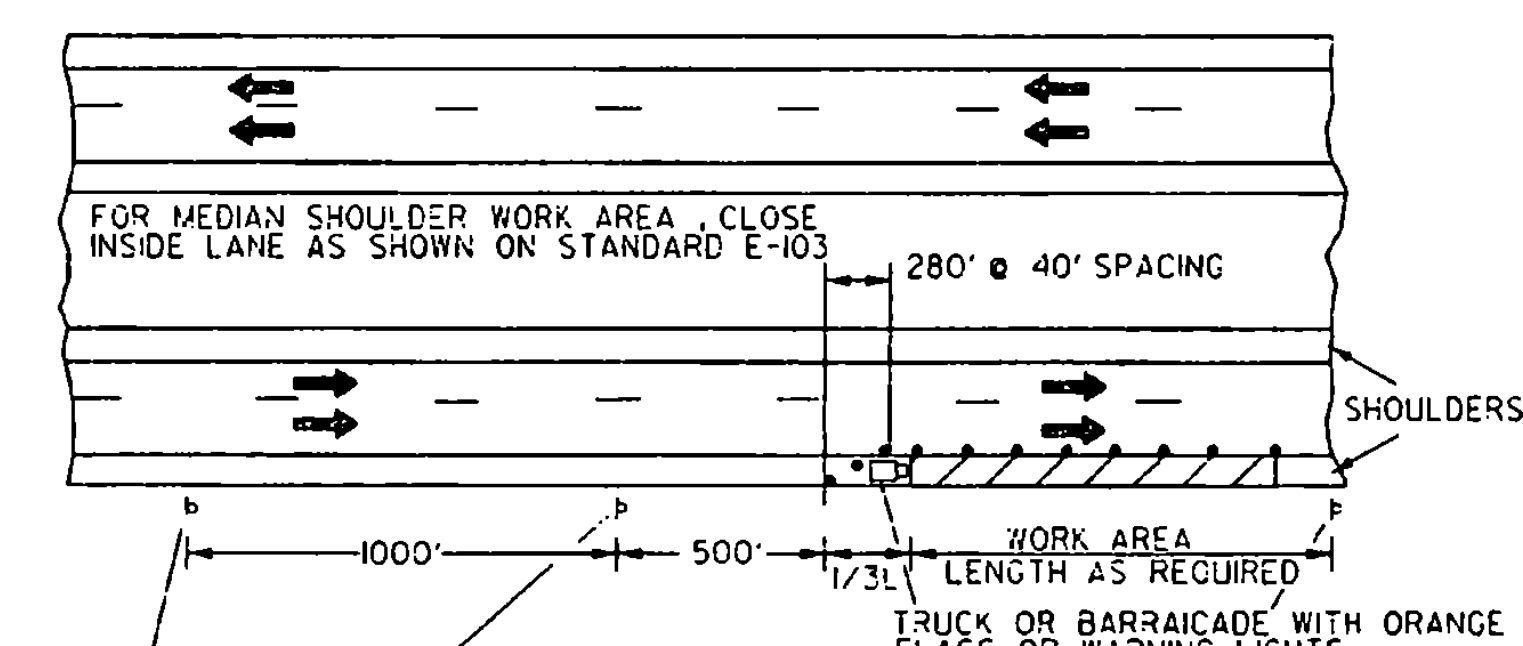


SIGN	DIMENSIONS (INCHES)									
	A	B	C	D	E	F	G	H	J	
2 LANE	36	5/8	7/8	1/2	5-D	3 1/2	3 1/4	1 1/4	2 1/4	
4 LANE	48	3/4	1 1/4	1	7-C	4	3 5/8	2 1/4	3	

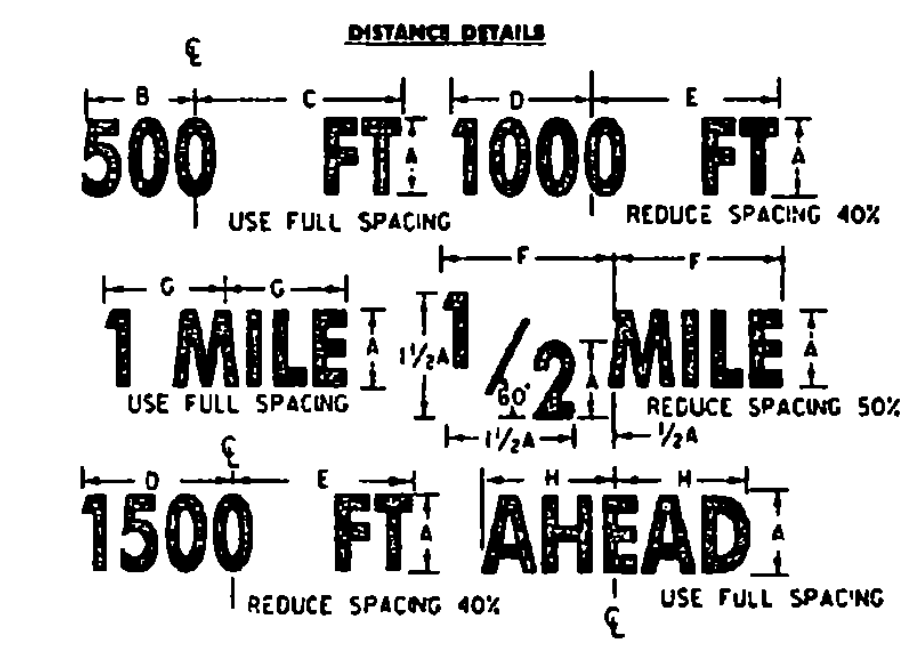
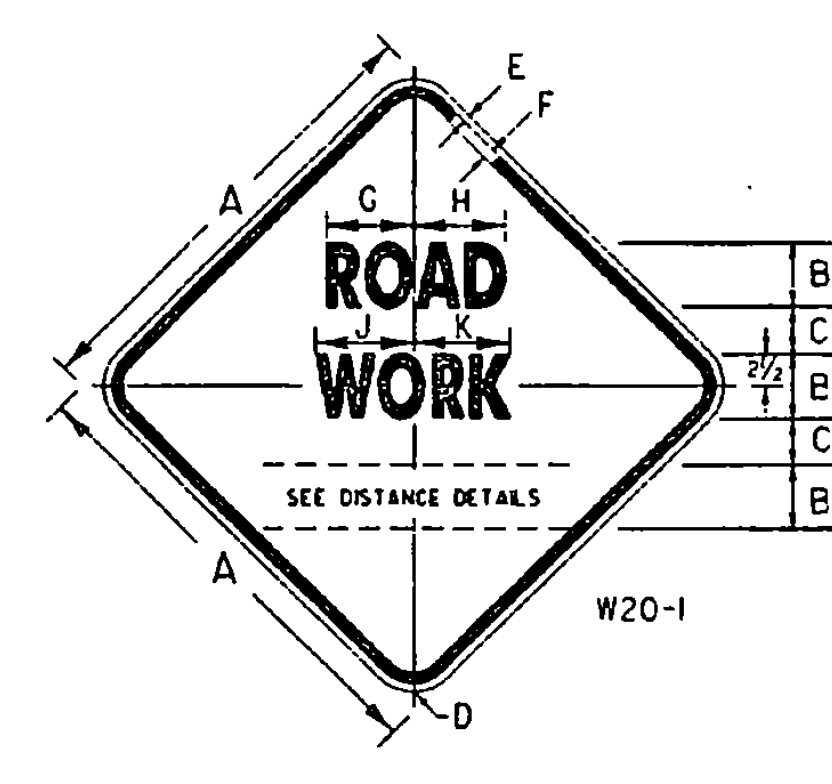
* REDUCE SPACING BY 40%



MOVE SIGNS AHEAD AS WORK PROGRESSES
**4 - LANE HIGHWAY
 MAINTENANCE OUTSIDE SHOULDER**

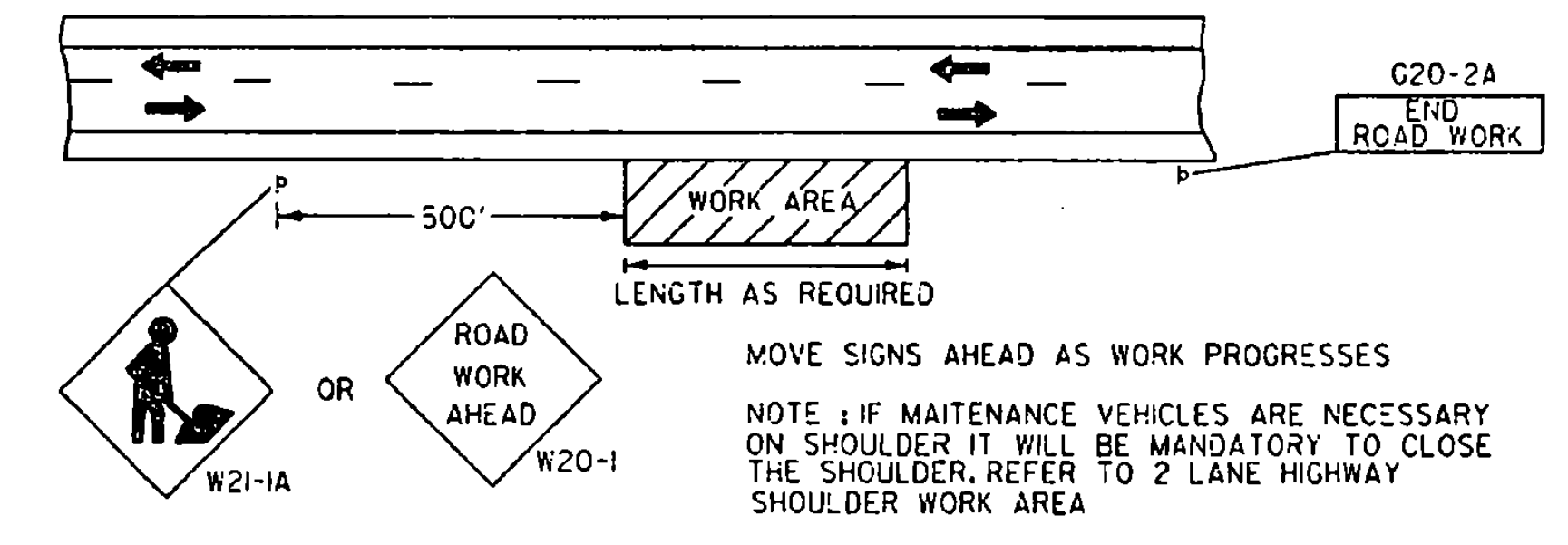


MOVE SIGNS AHEAD AS WORK PROGRESSES
**4 - LANE DIVIDED HIGHWAY
 SHOULDER WORK AREA**

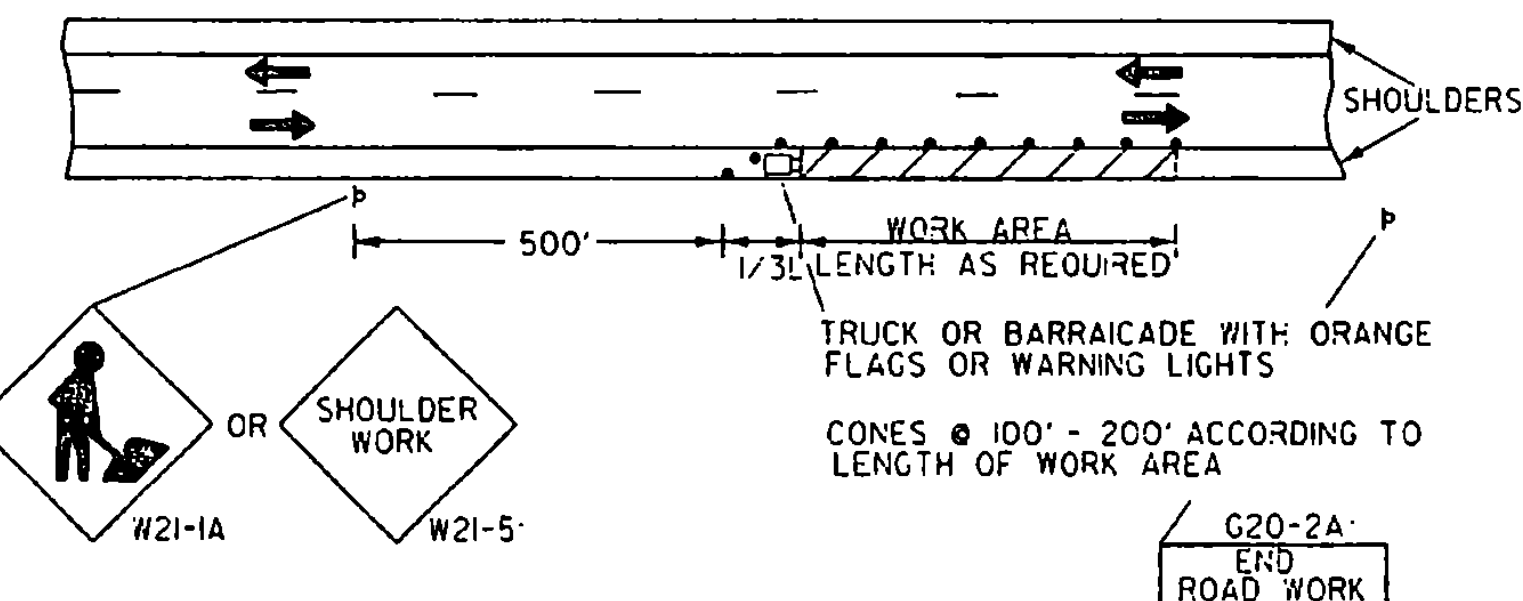


NOTES:
 REFLECTORIZATION:
 ALL REFLECTIVE MATERIAL SHALL CONSIST OF ENCAPSULATED LENS REFLECTIVE SHEETING. THE TEXT AND BORDERS MAY BE SCREENED, LETTERING FILM, OR HAND PAINTED.
 COLORS:
 THE WARNING SIGNS SHOWN ON THIS SHEET SHALL HAVE A BLACK TEXT AND BORDER ON A REFLECTORIZED ORANGE BACKGROUND. THE ORANGE SHALL CONFORM WITH THE STANDARD COLORS ADOPTED BY THE AMERICAN ASSOCIATION OF STATE HIGHWAY AND TRANSPORTATION OFFICIALS AND APPROVED BY THE U.S. DEPT. OF TRANSPORTATION, FEDERAL HIGHWAY ADMINISTRATION.
 TEXT DESIGN:
 LETTERS, SPACING, AND TEXT DIMENSIONS SHALL CONFORM WITH THE STANDARD ALPHABETS AND DESIGN PRESCRIBED IN THE MANUAL ON UNIFORM TRAFFIC CONTROL DEVICES.
 SPECIFICATIONS:
 WARNING SIGNS SHALL MEET THE STANDARD STATE SPECIFICATIONS FOR SIGNS.
 SIGN BASE MATERIAL:
 THE SIGN BASE MATERIAL USED FOR THE WARNING SIGNS SHOWN ON THIS SHEET MAY BE OF ANY OF THE FOLLOWING, WITH MINIMUM THICKNESS AS NOTED:

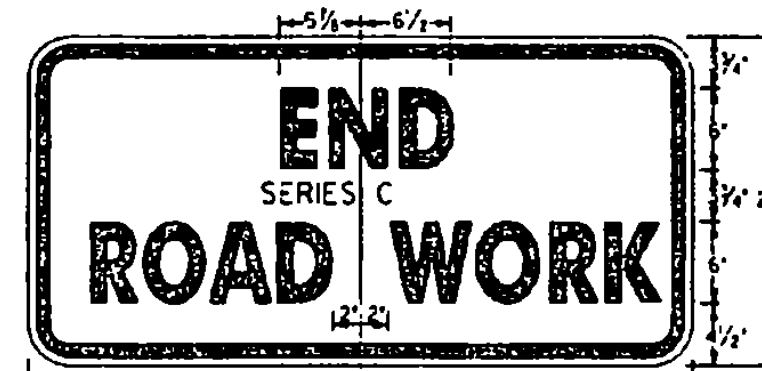
1) FLAT SHEET ALUMINUM	35x36	48x48	INCHES
2) HIGH DENSITY OVERLAYED PLYWOOD	0.100	0.125	INCHES
3) GALVANIZED SHEET STEEL	5/8	3/4	INCHES
	14	12	GAGE



MOVE SIGNS AHEAD AS WORK PROGRESSES
**2 - LANE HIGHWAY
 MAINTENANCE OUTSIDE SHOULDER**



MOVE SIGNS AHEAD AS WORK PROGRESSES
**2 - LANE HIGHWAY
 SHOULDER WORK AREA**



OTHER STDS. E-103
 REQUIRED:

REVISIONS AND CORRECTIONS
 JAN. 26, 1972 - DATE OF ORIGINAL ISSUE
 FEB. 29, 1972 - REVISED PER DIRECTION OF THE FEDERAL HIGHWAY ADMINISTRATION
 MAY 14, 1974 - REFLECTIVE MATERIAL CHANGE
 JUN. 8, 1977 - REFLECTIVE MATERIAL NOTE CHANGE SIGNS REFERENCED TO NUMBERS IN M.U.T.C.D.
 AUG. 10, 1977 - PERSON WORKING SIGN CHANGED TO SYMBOL
 DEC. 9, 1981 - VINOR SIGN DIMENTION CHANGES
 FEB. 3, 1986 - UPDATED TO 1986 SPECIFICATIONS
 AUG. 08, 1995 - UPDATED TO 1993 CHAPTER 6 - M.U.T.C.D.

APPROVED
Stephen D. McArthur
 DIRECTOR OF ENGINEERING
David A. Ross
 TRAFFIC AND SAFETY ENGINEER

**TRAFFIC SIGNS
 TYPICAL MINOR
 MAINTENANCE OPERATION
 APPROACH SIGNS**

VERMONT AGENCY OF TRANSPORTATION

**STANDARD
 E-10**

/traf/std/stdel0.dgn : stcel0.i

APPROVED FOR THIS PROJECT AND/OR DESIGN IMPLEMENTATION. FHWA FINAL APPROVAL PENDING.