

CONSTRUCT SPECIAL DITCH
1+000.0 - 1+036.4 LT

150 mm UNDERDRAIN
1+035.0 - 1+060.0 LT

CAST-IN-PLACE CEMENT
CONCRETE CURB TYPE B
1+036.4 - 1+060.0 LT

REMOVAL AND DISPOSAL
OF GUARDRAIL
0+953.1 LT - 0+960.0 RT

UNDERDRAIN FLUSHING BASINS
1+035 LT

STEEL MARKER POSTS
1+035 LT

CHAIN-LINK FENCE, 1.8 m
0+990± - 1+060 LT
(BLACK VINYL COATING ON ALL FABRIC)
(SEE SHEET 13 FOR APPROX. LOCATION)

STEEL BEAM GUARDRAIL
0+953.1 LT - 0+996.6 RT

MODIFIED ECCENTRIC
LOADER TERMINAL
0+996.6 - 1+007.0 RT

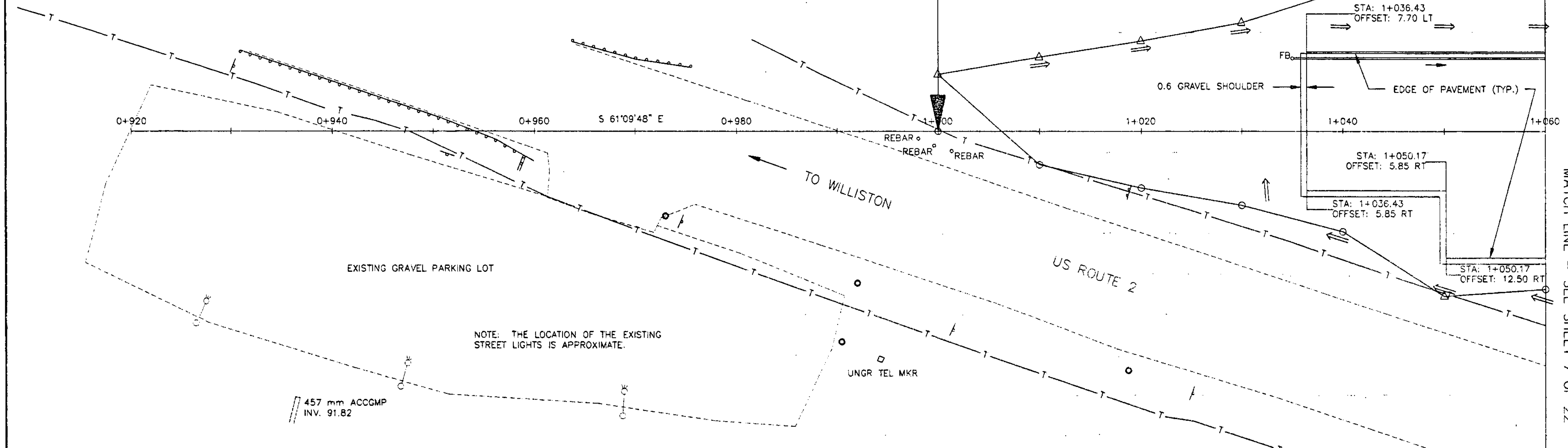
P.O.T. 1+000.00
BEGIN PROJECT
RICHMOND CMG PARK(4)

BRACING ASSEMBLY FOR
CHAIN-LINK FENCE, 1.8 m
0+990± LT (BLACK VINYL COATING ON
1+004± LT ALL FABRIC)
1+057± LT

MED. SPRUCE

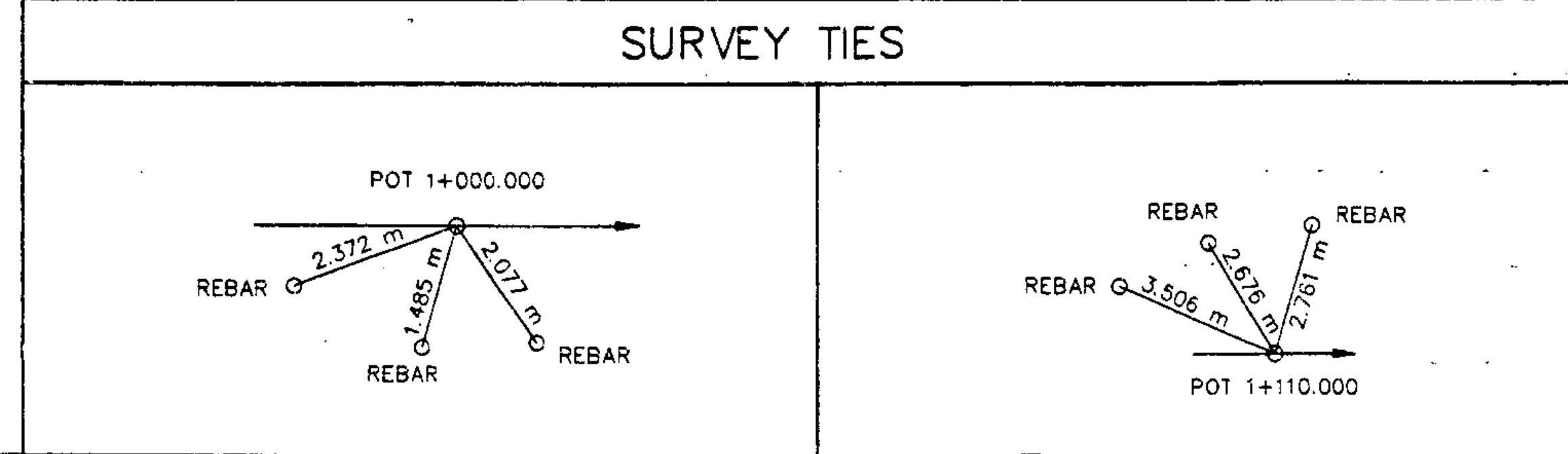
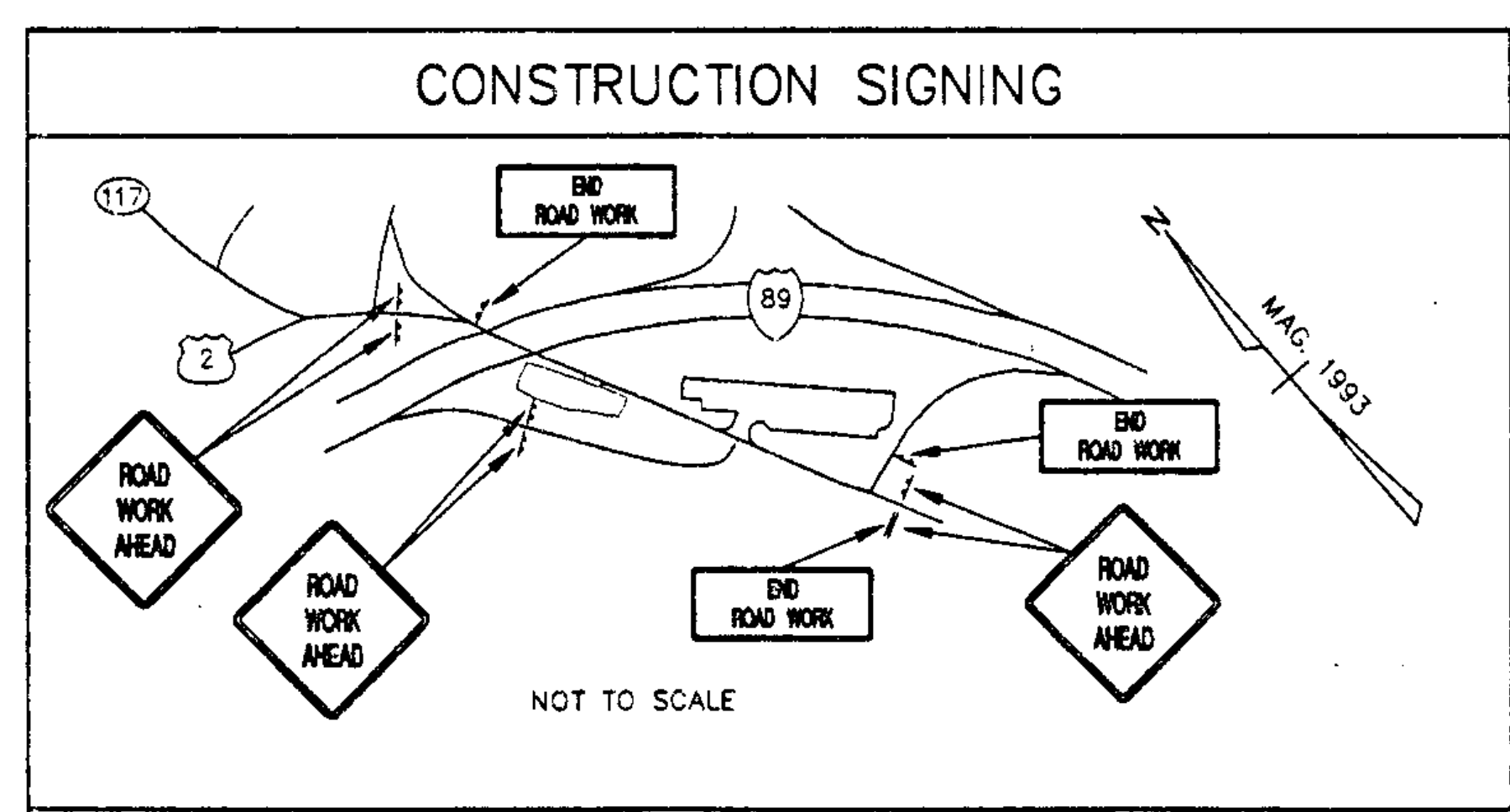
CLOSURE OF EXISTING PARKING LOT
UPON COMPLETION OF THE NEW PARKING LOT, THE EXISTING LOT WILL BE CLOSED AND LANDSCAPED AS DIRECTED BY THE ENGINEER. AS A MINIMUM, THE SURFACE SHALL BE GRADED TO DRAIN TO THE EXISTING CULVERT AT STA. 0+937± RT, LOOSENED TO A DEPTH OF APPROXIMATELY 100 mm, AND THEN COVERED WITH 100 mm OF TOPSOIL. THE ENTIRE AREA SHALL BE SEEDED AND MULCHED IN ACCORDANCE WITH THE SEED FORMULA AND APPLICATION RATES NOTED ON THE TYPICAL SHEET.

THE EXISTING STREET LIGHTS WILL BE REMOVED BY OTHERS, HOWEVER THE CONTRACTOR SHALL COORDINATE REMOVAL WITH THE VAOT TRAFFIC SHOP.



NOTE: THE LOCATION OF THE EXISTING STREET LIGHTS IS APPROXIMATE.

457 mm ACCGMP
INV. 91.82



DATUM
VERTICAL NAVD88(meters)
HORIZONTAL N/A



ALL DIMENSIONS IN METERS
UNLESS OTHERWISE NOTED

PROJECT PLAN	PREPARED BY	VSE	DATE	11/95
	CHECKED BY	VSE	DATE	11/95
	DESIGN SUPERVISOR	GAK	DATE	11/95
	PROJ.	RICHMOND CMG PARK(4)		
SHEET 6 OF 22 SHEETS				