

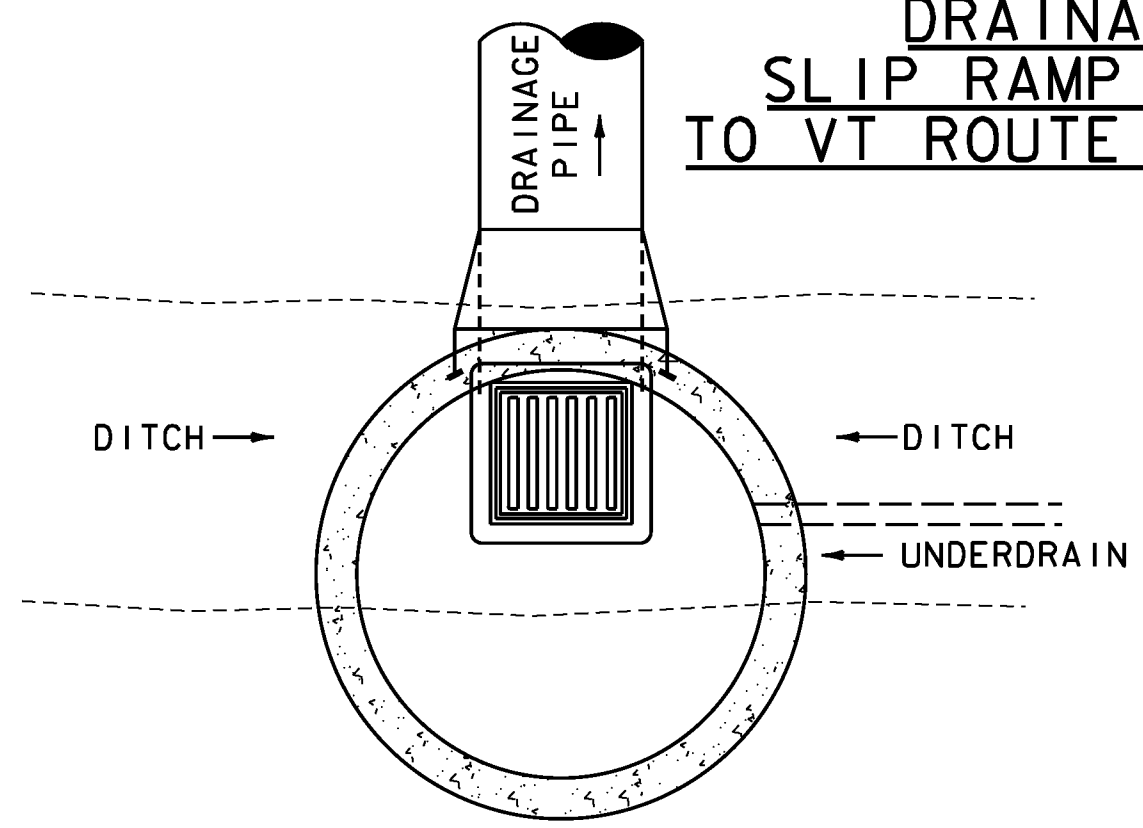
PRECAST CONCRETE CATCH BASIN NOTES:

- 1) AT A MINIMUM ALL PRECAST CONCRETE STRUCTURES, FRAME AND COVER/GRATE SHALL MEET AASTHO H-20 LOADING REQUIREMENTS. REFER TO SECTION 604 AND SUBSECTION 715.01 OF THE STANDARD SPECIFICATIONS.
- 2) FACE OF PIPE SHALL NOT PROJECT MORE THAN 2" OR LESS THAN 1" FROM INSIDE WALL OF STRUCTURE.
- 3) ALL STRUCTURES WITH MULTIPLE PIPES SHALL HAVE A MINIMUM OF 12" OF OUTSIDE SURFACE BETWEEN HOLES, NO MORE THAN 75% OF A HORIZONTAL CROSS-SECTION SHALL BE HOLES, AND THERE SHALL BE NO HOLES CLOSER THAN 3" TO JOINTS.
- 4) FITTING FRAME TO FINAL GRADE MAY BE DONE WITH BRICK OR PRECAST CONCRETE GRADE RINGS OF APPROPRIATE THICKNESS (3 COURSES MAX).
- 5) FLAT SLAB TOPS SHALL BE USED FOR ALL CATCH BASINS, UNLESS OTHERWISE PERMITTED BY THE ENGINEER.
- 6) ALL PIPE INVERTS AND PENETRATION ANGLES SHALL BE FIELD VERIFIED PRIOR TO PRECASTING.
- 7) PRECAST SECTIONS SHALL HAVE A TONGUE AND GROOVE JOINT AND BE ASSEMBLED USING A BUTYL RUBBER OR APPROVED EQUAL SEALANT.
- 8) PROVIDE FLEXIBLE RUBBER SLEEVES CONFORMING TO ASTM C-923, RESILIENT, OF SIZE REQUIRED, FOR EACH PIPE CONNECTING TO STRUCTURE. SLEEVES SHALL BE CAST INTO PRECAST STRUCTURE BY THE MANUFACTURER FOR ALL PIPE PENETRATIONS. FOR RCP PIPES, USE BRICK AND MORTAR.
- 9) CATCH BASIN GRATE ORIENTATION SHALL BE IN ACCORDANCE WITH STANDARD D-15 FOR TYPE E AND D-16 FOR TYPE B GRATES.
- 10) INSTALLATION OF DROP INLETS OVER EXISTING PIPES SHALL INCLUDE CLEAN CUTTING OF EXISTING PIPES, PROVIDING AN EXTENSION PIPE OF SIMILAR MATERIAL AND SIZE AS THE EXISTING PIPE, COUPLINGS REQUIRED FOR THE CONNECTION BETWEEN THE EXTENSION PIPE AND THE EXISTING PIPE, AND INSTALLING FLEXIBLE RUBBER SLEEVES AS SHOWN IN DETAILS PROVIDED ON THIS SHEET.
- 11) PAYMENT FOR INSTALLATION OF THE CATCH BASIN SHALL BE MADE UNDER THE PRECAST REINFORCED CONC. CATCH BASIN WITH CAST IRON GRATE ITEM (604.20).

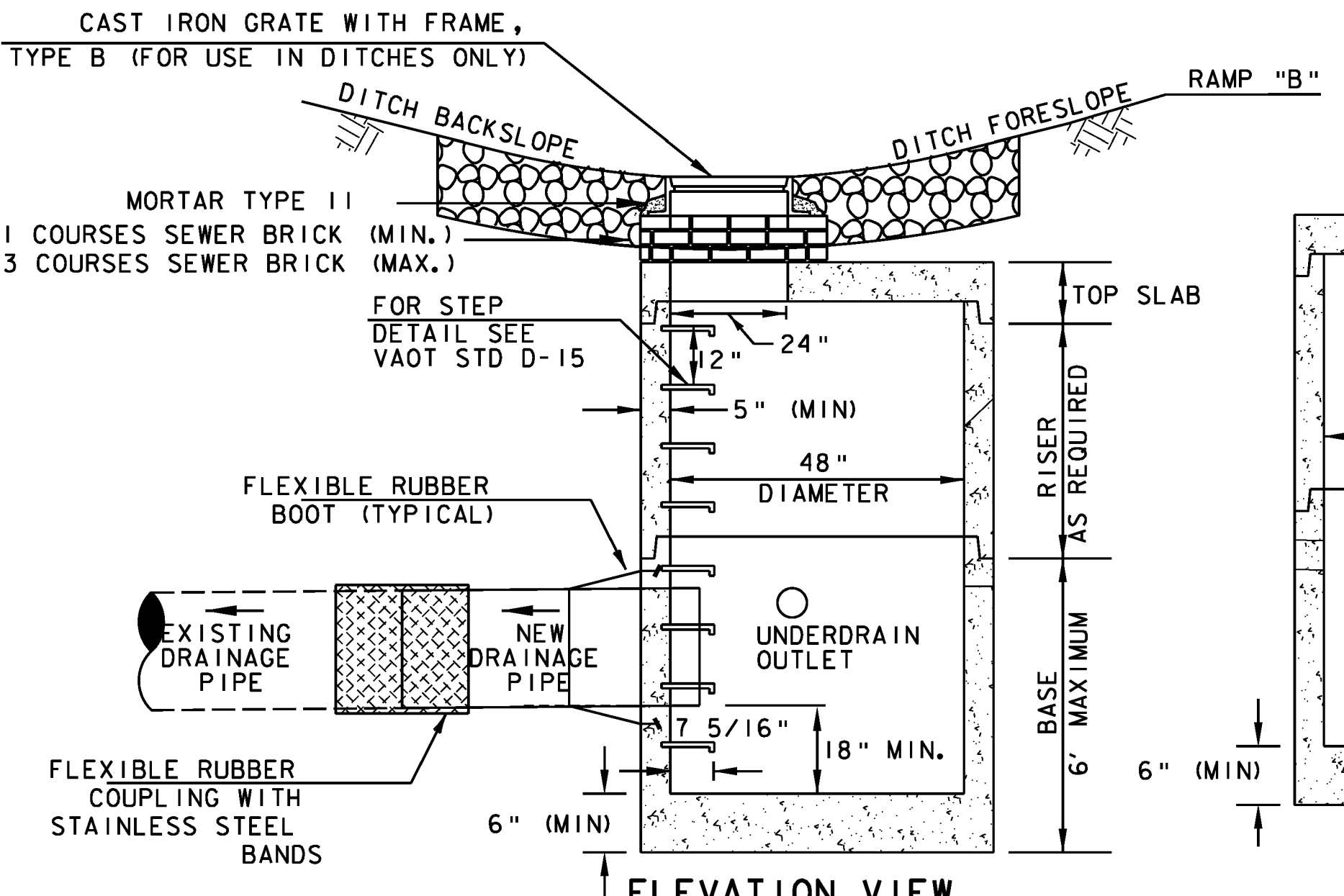
* NOTE:
IF USING RCP, BRICK AND MORTAR OPENING IN WALL IF USING CPEP (SL) USE MANUFACTURER APPROVED CONNECTION. COST SHALL BE INCIDENTAL TO COST OF NEW PIPE.

* NOTE:
FRAMES, GRATES, TOPS ETC ARE SHOWN ON PROFILE FOR REPRESENTATION ONLY. CONTRACTOR SHALL DETERMINE ACTUAL TOP SLAB, FRAME AND GRATE REQUIREMENTS.

**DRAINAGE PROFILE
SLIP RAMP STA. 81+87.23
TO VT ROUTE 15 STA 16+91.45**



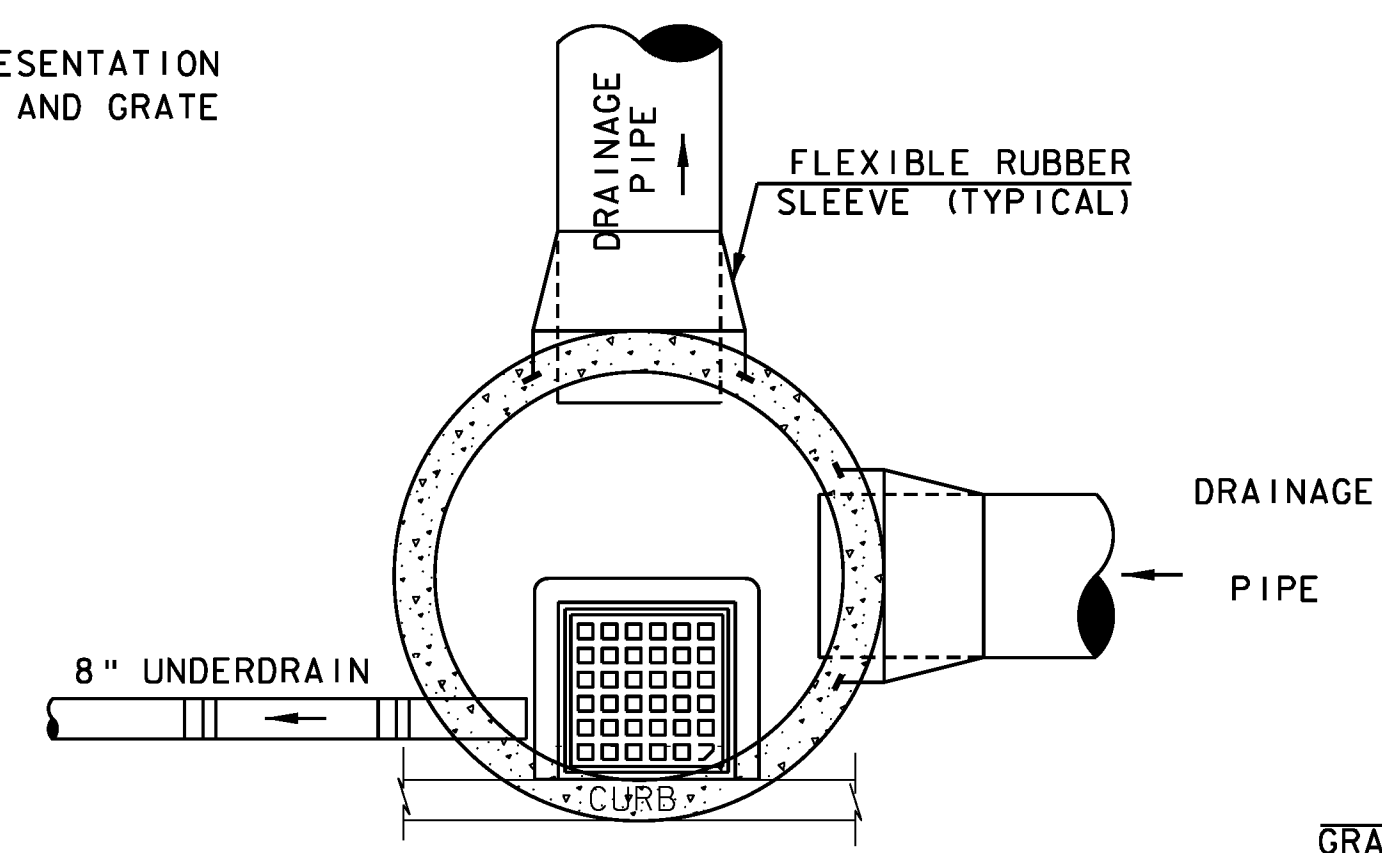
PLAN VIEW



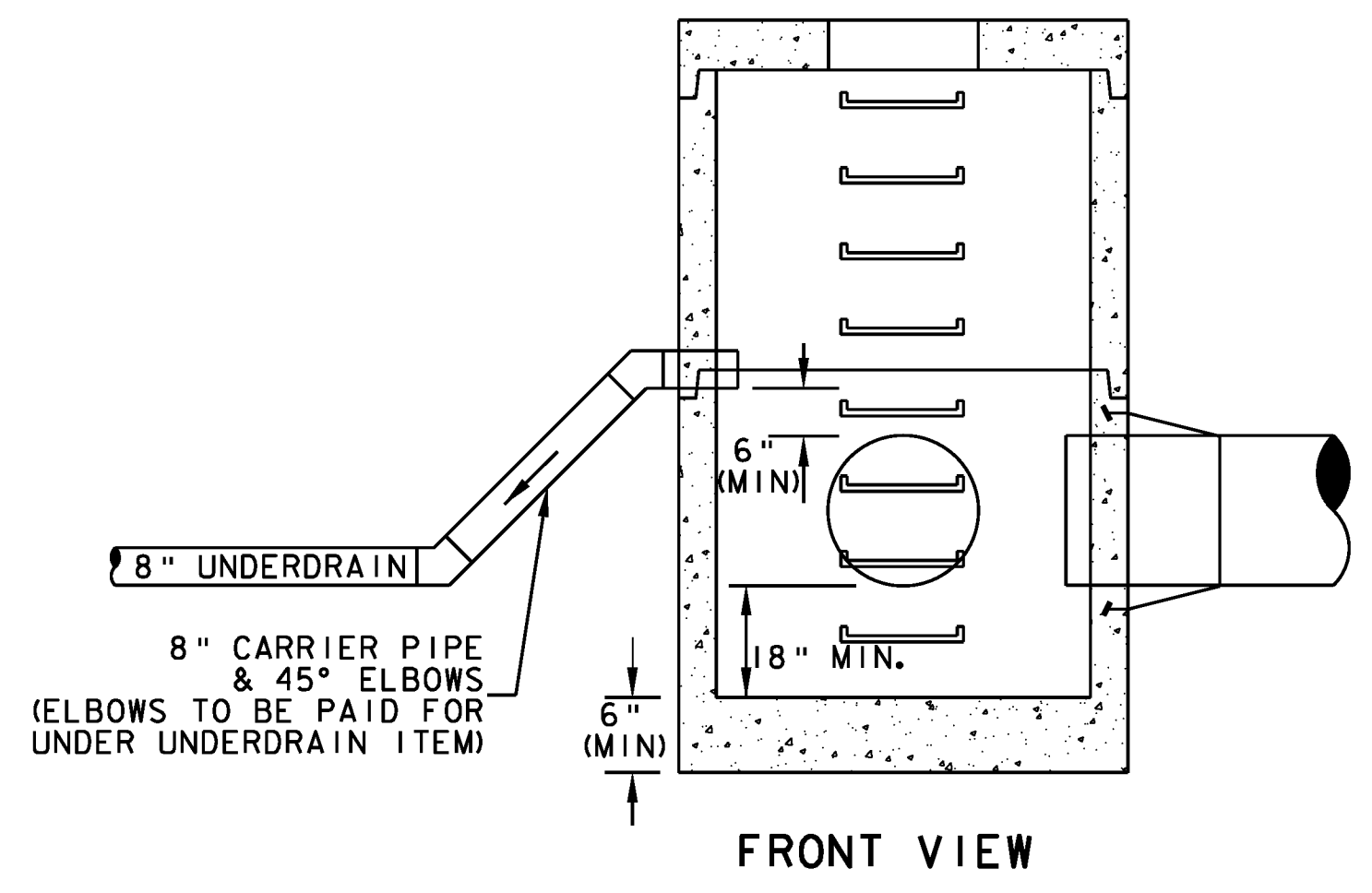
ELEVATION VIEW

**PRECAST CATCH BASIN INSTALLED IN DITCH
W/ UNDERDRAIN FLUSHING ACCESS
@ RAMP "B" STA. 55+06.58 LT**

NOT TO SCALE



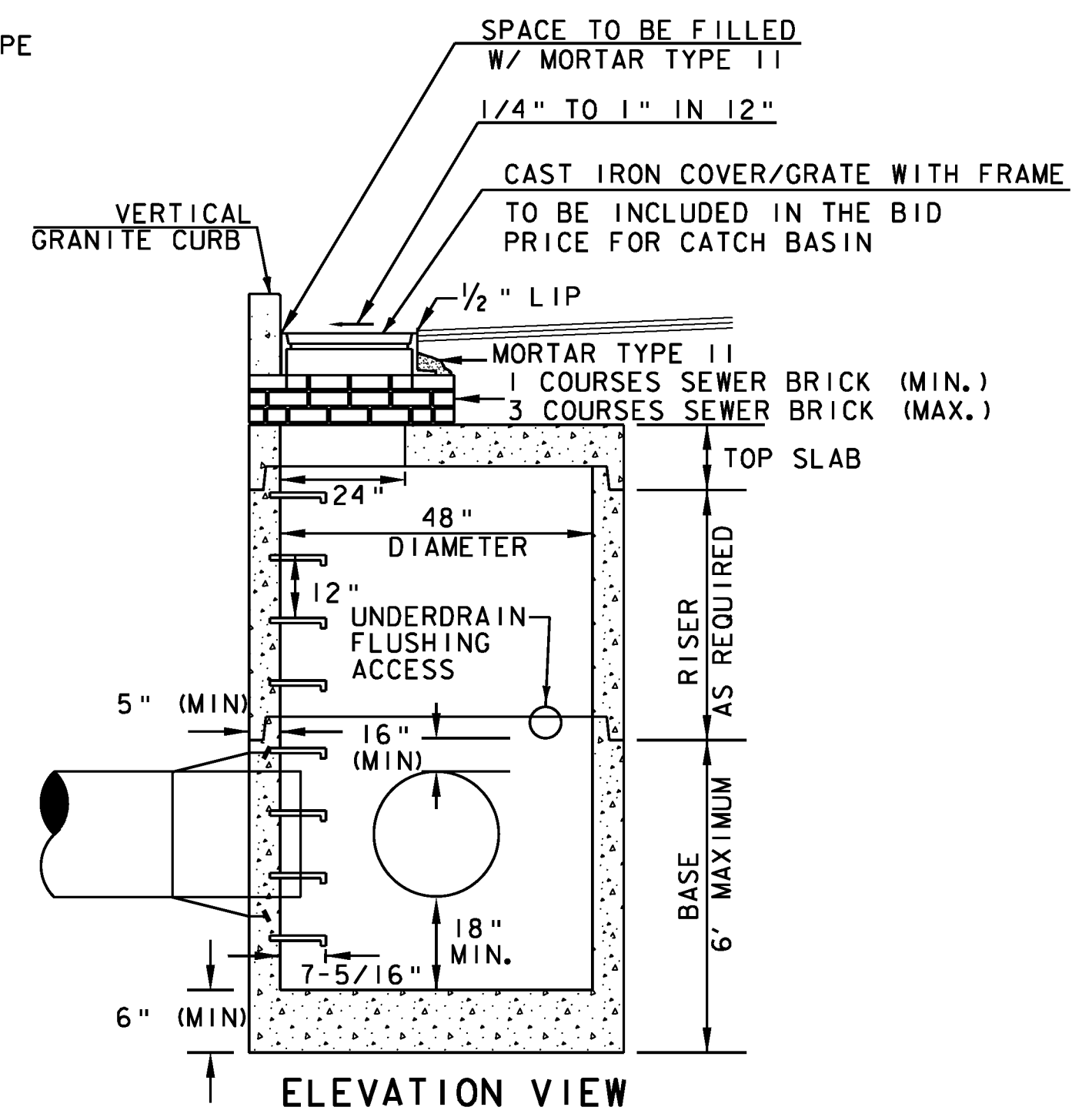
PLAN VIEW



FRONT VIEW

**TYPICAL PRECAST CATCH BASIN INSTALLED IN ROADWAY
WITH OPTIONAL UNDERDRAIN FLUSHING ACCESS**

NOT TO SCALE



ELEVATION VIEW

PROJECT NAME: WINOOSKI
PROJECT NUMBER: NH 089-3(65)

FILE NAME: z94a198drndet.dgn
PROJECT LEADER: KEN UPMAL
DESIGNED BY: T.BIGELOW
DRAINAGE DETAILS

PLOT DATE: 2/23/2010
DRAWN BY: T.BIGELOW
CHECKED BY: E.ATKINS
SHEET 24 OF 67